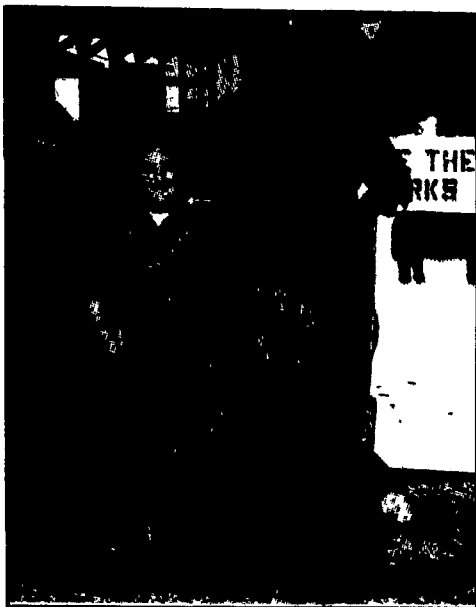


Berks Annual Roundup

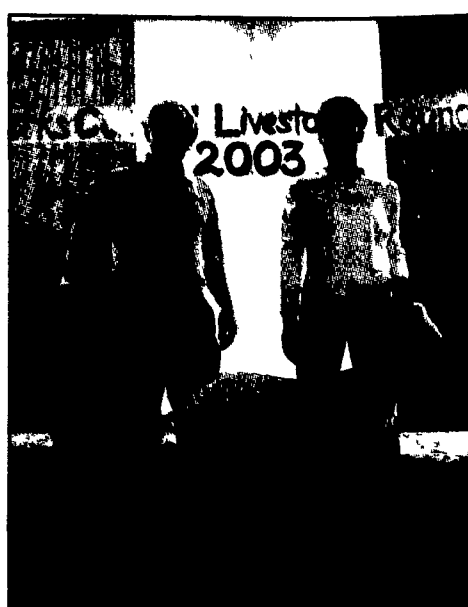
(Continued from page A23)



Grand champion hog at the Berks County 4-H Roundup was exhibited by Samantha Rabenold, Kutztown, center. The 247-pound hog sold to Wachovia Bank, represented by Bill Hughes, left, and Travis Werley, for \$600.



Nathan Behm, left, showed reserve champion Berks County market hog, weighing 212 pounds. Larry Behn, Exeter Chiropractic, purchased the hog for \$425.



Berks County 4-H champion meat goat, weighing 86 pounds, was exhibited by Shelby Rarick. The goat sold for \$375 to Bill Campbell, Hoss's.



Kim Angstadt, Fleetwood, exhibited the Berks County champion lamb, weighing 87 pounds. The lamb sold to Carl Brown, FM Brown's, Birdsboro, for \$400.

Sign Up For Livestock Assistance Program

LANCASTER (Lancaster Co.) — Livestock Assistance Program sign-up will end Oct. 24.

This program was authorized for Lancaster County livestock producers for grazing losses that occurred in 2002. When the sign-up period ends, the total value of all applications will be determined and, if in excess of the \$250 million authorized, will be adjusted proportionately.

This program provides additional relief to livestock producers who suffered grazing losses due to drought and have limited safety net and risk management tools available. To be eligible, a producer's grazing land must be located in Lancaster County.

Producers can visit the Lancaster County FSA Office, and come prepared with a list of livestock by category and weight for the period of loss. Office is located in the Farm and Home Center, 1383 Arcadia Road, Lancaster.

Lancaster Farming
Check out our Website!
www.lancasterfarming.com



All-Plant LIQUID PLANT FOOD 9-18-9 PLUS OTHERS!

- Contains 100% white ortho phosphoric acid. Made in USA.
- Non-corrosive. Won't settle.
- Top quality. Excellent service.
- Newest equipment
- Financially sound...and growing!

Big Demand Requires More Distributors!

- I sell to farmers. How do I become your distributor?
- I'm a farmer. What's the price? Where do I get it?

CALL or SEND FOR FACTS:
Phone: 814-364-1349

ALL-PLANT LIQUID PLANT FOOD, INC.
821 State Rd. 511 N., RFD 3,
Ashland, Ohio 44805

The Penn State Proud! Beef Cattle Sale

Noon, November 7, 2003
Penn State Beef-Sheep Center
University Park, PA



Featuring the get and service of:
Summitcrest High Prime OH29
B/R New Design 323
LF New Trend 4100
Connealy Dateline
GAR Grid Maker

Visit the on-line catalog at www.das.psu.edu
or call 814-863-0831 for more information.

DAIRY &
ANIMAL
SCIENCE

The sale offering includes:

- > All Angus cows offer 4 years old
- > 12 Angus and 10 Commercial bred heifers
- > 5 Commercial cows bred to club calf sires
- > 10 club calf prospects
- > a 2-yr. old calving ease Angus bull

Bon View New Design 878
Scotch Cap
N Bar Emulation EXT
Bon View Bando 598
B/R New Design 323-9150



Since 1929, Mt. Joy has served as a leader in the local Dairy Industry. Now grown to over 300 members, the Co-op continues that commitment to marketing our members' milk in 10 counties.

- Local Board of Directors/Member Controlled
- Mt. Joy's own trucking
- Top dollar over-order premiums
- Insurance programs
- Forward contracting

are all reasons why Mt. Joy continues to play a vital role in meeting our Dairyman's needs. Give us a call today!

MOUNT JOY FARMERS CO-OP

Quality Milk Producers

1-800-860-6569 • 717-653-5431

Email: mtjoymilk@supernet.com

