

# Brubaker Wins Champion Swine At New Holland Fair

**CHARLENE SHUPP**  
*Lancaster Farming Staff*  
**NEW HOLLAND** (Lancaster Co.) — Show Judge Cheryl Fairbairn of Coatesville faced a challenging decision selecting the grand and reserve champions during the 2003 New Holland Fair Market Swine Show Tuesday evening.

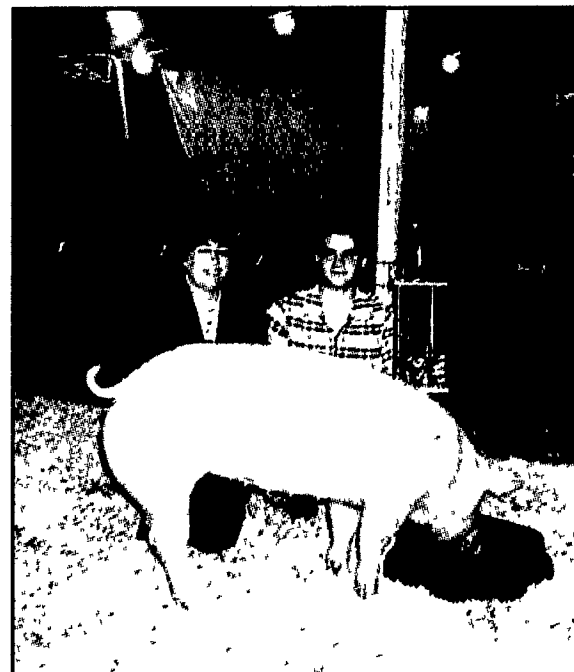
For her selection as grand champion, Fairbairn chose the light heavyweight champion market swine exhibited by Jacob Brubaker, Kinzers. To complete this champion pair, the heavyweight champion exhibited by Gerald Martin, New Holland, was named reserve.

This year's show included 21 entries for 4-H and FFA projects. Show results are as follows:

**NEW HOLLAND SWINE SHOW RESULTS**  
 Lightweight Class 1: 1. Brian Nolt. 2. Rachel Brubaker. 3. Josh Hoover. Class 2: 1. Gerald Martin. 2. Jonathan Rupert. 3. Josh Hoover.  
 Lightweight Champion: Gerald Martin. Lightweight Reserve: Brian Nolt.  
 Medium Weight Class 3: 1. Gerald Martin. 2. Jonathan Rupert. 3. Holly Hoover. Class 4: 1. Jonathan Rupert. 2. Rachel Brubaker. 3. Horen Hershey.  
 Medium Weight Champion: Gerald Martin. Medium Weight Reserve: Jonathan Rupert.  
 Light Heavyweight Class 5: 1. P. Jacob Brubaker. 2. Holly Hoover. Class 6: 1. P. Jacob Brubaker. 2. Brian Nolt. 3. Holly Hoover.  
 Light Heavyweight Champion: Jacob Brubaker. Light Heavyweight Reserve: Jacob Brubaker.  
 Heavyweight Class 7: 1. Gerald Martin. 2. Rachel Brubaker. Class 8: 1. Brian Nolt. 2. P. Jacob Brubaker. 3. Luke Hershey.  
 Heavyweight Champion: Gerald Martin. Heavyweight Reserve: Brian Nolt.  
**GRAND CHAMPION**  
 Jacob Brubaker  
**RESERVE**  
 Gerald Martin

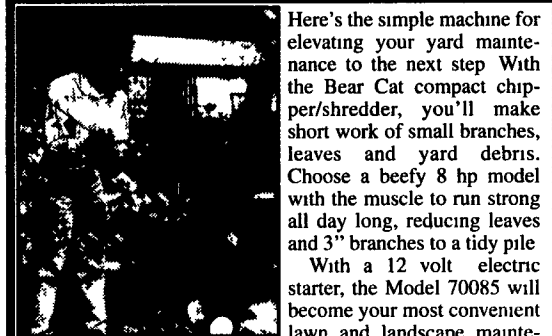


Grand champion market swine at New Holland Fair on Tuesday was exhibited by Jacob Brubaker, Kinzers. Chester County Extension Director Cheryl Fairbairn judged the show. Photo by Charlene Shupp



New Holland Fair reserve champion swine was exhibited by Gerald Martin, New Holland. Judge was Cheryl Fairbairn. Photo by Charlene Shupp

**CRARY BEAR CAT**  
 A Breed Above The Best



Here's the simple machine for elevating your yard maintenance to the next step. With the Bear Cat compact chipper/shredder, you'll make short work of small branches, leaves and yard debris. Choose a beefy 8 hp model with the muscle to run strong all day long, reducing leaves and 3" branches to a tidy pile. With a 12 volt electric starter, the Model 70085 will become your most convenient lawn and landscape maintenance management tool — one that you'll trust for years.

With your choice of self feed Model 73454 you get 20"x14" balanced steel disc with four reversible chipper blades, easy feeding with a big 27"x28" feed hopper and 5-1/2"x7" chipper opening that defies small side limbs, 360° rotating discharge tube and 15" diameter feed roller with 10 knives. Add the ease of a hinged chipper disc cover for quick access to blades and heavy-duty 140 lb. disc and your debris problems are solved!

**4" PTO CHIPPER BLOWERS**  
 If a 4" PTO Chipper will handle your debris, the Model 73454. Built Bear Cat tough yet compact in design, the 4" chipper will handle your debris recycling problems.



Model 73454 PTO Chipper brings a new meaning to power in a 4" chipping unit

**ABC GROFF**  
 110 South Railroad Ave., New Holland, PA 17057  
 Mon. - Thurs. 9:00 - 5:00  
 Sat. 7:30 - Noon  
 Phone: 717-353-4441

**Greider & Witmer Associates, Inc.**  
 Your Complete Tax, Accounting and Investment\*\*  
 Service for Individuals, Small Businesses and Farmers  
**Free Seminars**

- Retirement Planning\*\*  
 Thursday, October 23 7:00 PM
- Tax Planning Based on the New Tax Law  
 Tuesday, November 11 7:00 PM

Call to reserve your seat today!

2733 Willow Street Pike  
 Willow Street, PA  
 (717) 464-2951  
 Fax (717) 464-2013  
 greiderstaxsvc@msn.com

**Susan Greider**  
 Enrolled Agent

**Roxanne Witmer**  
 Enrolled Agent

Member **NATP**  
 National Association of Tax Professionals

\*\* Securities offered through Royal Alliance Associates, Inc. Member NASD & SIPC

## State's 2002 Orchard And Vineyard Survey Results Now Available

HARRISBURG (Dauphin Co.) — Pennsylvania's 2002 Orchard and Vineyard Survey results are now available. The 64-page report contains information about the number of fruit trees and grapevines located in Pennsylvania, acreage by age and variety listed by county and state totals, rootstock information, and intentions for future plantings.

The information is gathered from the Orchard and Vineyard Survey that is conducted every five years, with the most recent conducted in the summer and fall of 2002. This report was released to the Internet on Aug. 28. For the 2002 and the 1997 issues of the Pennsylvania Orchard and Vineyard report, click on "Publications and Releases" at <http://www.nass.usda.gov/pa/>.



**TRUCKLOAD SALE**

**BLACK PLASTIC CROP COVERS**  
 4 or 6 Mil

10'x100' Through 40'x100'  
 ★ Reasonable Prices ★  
 Also Round Silo Caps In Stock

**Black & White BUNKER COVERS**

**HUBER'S ANIMAL HEALTH SUPPLIES**  
 810 Tulpehocken Rd., Myerstown, PA 17067  
 717-866-2246  
 Mon. 7:30 a.m. to 6 p.m., Thurs. & Fri. 7:30 a.m. to 8 p.m.  
 Tues. & Wed. 7:30 a.m. to 5 p.m., Sat. 7:30 a.m. to Noon