



**International Case 3594 4 Wheel Drive Farm Tractor**, 180 HP Turbo, 3 Point Hitch with 3 Remotes Enclosed Cab with Air Conditioning \$21,900



**John Deere 3640 4 Wheel Drive Farm Tractor** 120 HP Turbo, 3 Point Hitch, Enclosed Cab Air Conditioning \$19,900



**1999 Ford F450 XLT**, 7.3 Liter Powerstroke Auto Spring Suspension White Crewcab XLT Super Duty 9 Aluminum Flat Bed w/ Toolboxes on Both Sides & Hidden Fifth Wheel Tow Package Power Windows Locks Cruise Control Air Condition AM FM Cassette Power Seat Remote Keyless Entry, Good Condition, Stk# 150339, \$14,900



**1994 Yanmar B6-2 Excavator**, Offset Boom, 37HP Engine, Weight 12,000 lbs Stk# 350011 \$16,900



**Curry Supply Co.** 1-800-345-2829  
Curryville, PA 814-793-2829

**F.M.I.**

FEEDMOBILE, INC.

717-626-2680 Lititz, PA

**TRUCK BODIES & HOISTS**

Your Full Line For



**STAKE BODIES**

- Steel Painted Racks
- Aluminum Racks
- Polyboard Racks

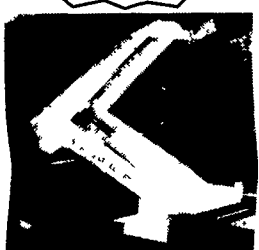
PULL TARP AVAILABLE



**ALUMINUM CONTRACTOR BODY**

WITH FOLD DOWN SIDES  
9'x96" & 11'x96"

1995 International w/Flat Bed  
1995 International w/18' Van Box



**DROP HINGE HOISTS**

Class B - 9' to 12'  
Class D - 12' to 16'  
Class E - 12' to 16'  
Class F - 12' to 18'

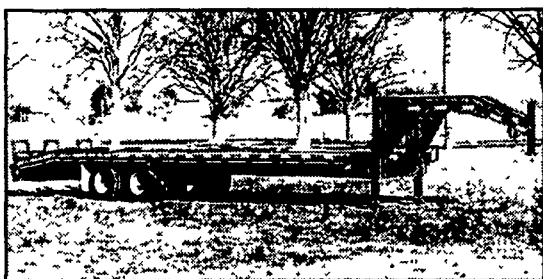
**H.R. Collins & Company Trailer Sales**

5139 Perry Rd., Mt. Airy, MD 21771  
1-800-784-4584  
hrcollins.com

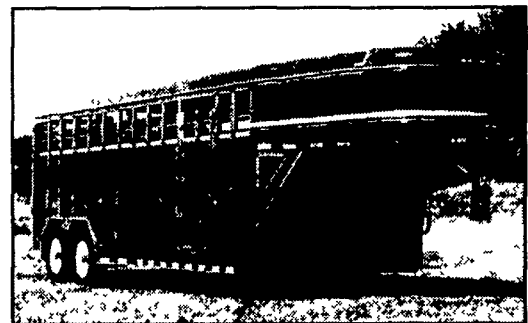
Adam 20 Ft. Heavy Duty  
7 Ft. Interior Height  
3 Horse Slant  
All Alum.



Corn Pro & Top Brand Gooseneck & Pintle Hook Types



Corn Pro 20 ft. Stock Gooseneck 7 Ft. Interior Height



**TRUCK TIRES**

- Used Truck Tires
- Authorized Cooper Tire Dealer
- Good Supply of Retreads In Stock. Or We Can Custom Retread Your Own Tires To Meet Your Hauling Needs
- Eliminate the Middleman and Buy Direct from our Retread Shop and Save \$\$'
- Our Family Business Has Been Retreading Tires for Over 35 Years

We Know How To Do It Right!



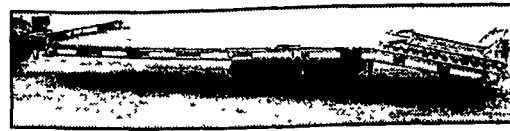
**WEAVER'S TIRE SERVICE**

Ephrata, PA

Drive On. 717/733-8775



'77 Mack Dump Truck, Air Brakes, HD Hitch, New Clutch, New Radiator, New Batteries. Runs Great • \$6,500 OBO

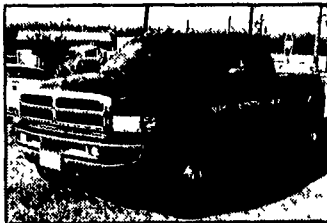


'98 Interstate Trailer, 25,900 GVW, Air Brakes. \$4,800 OBO

610-913-0186  
Call 610-256-5270

**Diesel Owners!**

Get HP & Fuel Mileage



We Have Performance Chips For The Following:

- |                  |  |
|------------------|--|
| Dodge Cummins    | 40-120 HP + 175 Ft. lbs. More Torque               |
| Chevy Duramax    | 70-210 more HP up to over 400 lbs. of Torque       |
| Ford Powerstroke | 60 - 80 - 120 add more HP up to 200 lbs. of Torque |
| VW TD            | 35 more HP add up to 35 + 45 lbs. of Torque        |

Free Installation 2003 Performance Chips & Exhaust are here & in stock

We carry complete line 4" exhaust systems for..... \$550

\*Torque Converters \*Valve Bodies \*Exhaust Brakes \*Gauges \*K&N Air Filters

You Get More Horsepower & Torque

We Carry The Best Stuff For Your Truck  
Propane For Diesel - Nitrus For Diesel



Call About Our Gas Chips

(717) 249-2255 Call Now!!! Ask for Shawn

**LIBERATOR PERFORMANCE**

1970 Spring Road, Carlisle, PA 17013

Sales, Service & Inspection



Better Fuel Mileage

**30/40 Four Way Auto Sales**

VANS, VANS, VANS - ALL MAKES, All Models.



**03 Ford E-150 Club Wagon XLT** 8 Passenger, 5.4 V8 Dual A/C & Heat Privacy Glass, PW, PL, Tilt, Cruise, Cassette, CD, Keyless, Tow Package, Silver, 21,000 Mi., #4697



**02 Chevy G1500 Express LS, 15 Passenger, 5.7 V6 Eng., Dual A/C & Heat, Privacy Glass, PW, PL, Tilt, Cruise, CD, Keyless, Tow Package Charcoal 19,000 Mi. #4706**



**03 Ford E-350 Club Wagon XLT, 12 Passenger, 5.4 V8, Dual A/C & Heat, Privacy Glass, PW, PL, Tilt, Cruise Cassette CD Green 25,000 Mi. #4721**



**02 Chevy G1500 Express LT, 7 Passenger 5.7 V8 Dual A/C & Heat Privacy Glass PW, PL Tilt, Cruise CD Changer Keyless Tone Package Quad Captains Entertainment Center Blue 32,000 Mi. #4718**



**03 Chevy G3500 Extended Express LS, 15 Passenger 6.0 V8, Dual A/C & Heat, Privacy Glass PW PL Tilt Cruise CD Pewter 24,000 Mi. #4615**

**Additional Inventory**

7 Passenger

**03 Ford E150 Club Wagon Chateau**, 5.4 V8, Blue/Silver, 30,000 mi #4729

**03 Ford E-150 Club Wagon Chateau**, 5.4 V8, Tan/Gray, 17,000 Mi., #4686

**03 Ford E-150 Club Wagon Chateau**, 5.4 V8, Tan/Gray, 21,000 Mi., #4687

**01 Chevy G1500 Express LT**, 5.7 V8, Green, 36,000 Mi. #4645

**01 Ford E-150 Club Wagon Traveler**, 5.4 V8, Green/Gray, 78,000 Mi. #4711

8 Passenger

**02 Chevy G1500 Express LS**, 5.7 V8, Charcoal, 14,000 Mi., #4707

**02 Chevy G1500 Express LS**, 5.7 V8, Pewter, 13,000 Mi., #4700

12 Passenger

**03 Ford E350 Club Wagon XLT**, 5.4 V8, Silver, 25,000 Mi. #4722

**03 Ford E-350 Club Wagon XLT**, 5.4 V8, Silver, 25,000 Mi. #4722

**03 Ford E-350 Club Wagon XLT**, 5.4 V8, Green, 24,000 Mi. #4723

**03 Ford E-350 Club Wagon XLT**, 5.4 V8, Silver, 22,000 Mi., #4689

**00 Ford E-350 Club Wagon XLT**, 5.4 V8, Green, 47,000 Mi., #4725

15 Passenger

**03 Ford E-350 Super Club Wagon XLT**, 5.4 V8, Silver, 24,000 mi #4730

**03 Chevy G3500 Extended Express LS**, 6.0 V8, 29,000 mi., Pewter #4728

**00 Ford E350 Super Club Wagon XL**, 5.4 V8, Green, 8,000 mi. #4732

**03 Ford E-350 Super Club Wagon XLT**, 6.8 V10, White, 29,000 Mi., #4702

Cargo Vans

**00 Chev G2500 Cargo**, White, 11,000 Mi

**01 Ford E350 Econoline Hi Top**, White, 17,000 Mi.

**Financing Starting at 5.75%**

Rt. 28-New Holland, PA  
717-354-3199

Toll Free 1-877-999-VANS (8267)  
• Commercial customers welcome  
• Warranties available.



**00 FORD E-350 CLUB WAGON CHATEAU**, 7 Passenger, 7.3 Power Stroke Diesel, Dual A/C & Heat, Privacy Glass, PW, PL, Tilt, Cruise, Cassette Tow Package, Quad Captains, Red/Silver, 80,000 Mi. #4682



**02 FORD E-150 CLUB WAGON TRAVELLER** 7 Passenger, 4.6 V8, dual A/C & heat, privacy glass PW PL, tilt cruise, cass/CD, keyless, quad captains, leather, entertainment sys., green/gray 27,000 #4648



**01 Ford E-350 Super Club Wagon XLT**, 15 Passenger, 5.4 V8, Dual A/C & Heat, Privacy Glass, PW, PL, Tilt, Cruise, Cassette Tan, 34,700 Mi. #4474



**00 Ford E-150 Club Wagon Chateau**, 7 Passenger, 4.6 V8 Dual A/C & Heat Privacy Glass, PW, PL, Tilt, Cruise, Cassette, CD Pseat, Keyless, Green/Silver, 39,000 Mi. #4621



**03 Ford E-350 Club Wagon XLT**, 12 Passenger 6.8 V10 Dual A/C & Heat Privacy Glass, PW PL Tilt Cruise Cassette CD, Tow Package, White 9,800 Mi. #4709