

Toyota 1995 4 runner, lmt, V6, 4WD, leather, AC, Auto, every avail opt, gar kept, exc cond asking \$7,900 717/278-8891

1998 Dodge Ram 2500, 4x4, SLT, club cab, only 50,400 mi, 1 owner, tool boxes, snow plow, exc, \$16,900 717-866-8557

'81 Freightliner 4700 stainless steel tanker, setup to haul water, can be converted to haul other products, truck & tank in brand new cond (717)765-4392

1975 Dodge D600, 10 wheeler, w/22' grain body, actual mileage less than 30,000 mi, good condition, \$6,000. 410-758-0979

'85 Chevy Suburban, 4x4, 350, AT, AC, 74k, ex cond, \$7000 obo (717)484-2717

'85 Ford F150 XLT w/cap, 67k, V6, 2wd, AT, AC, PW, PL, inspected, ex cond, \$3800 obo (717)484-2717

'99 Dodge 2500, V10, 4x4, auto, AC, loaded, sun-roof, tow pkg, 40k mi, runs ex, priced neg \$16,800 (570)387-0247

'97 F150 XLT extend a cab, V8, auto, 4x4, w/trk cap, tow pkg, 129k mi, inspect to 6/04, \$8,600 (570)286-6687

**2001 Ford F250 Power Stroke Diesel 7.3 with Tow Package and Lots of Options**



Crew Cab Long Bed with H.D Unigoose gooseneck trailer hitch frame mounted, also bumper ball hitch, bed liner with rubber mat & tarp kit, 33600 miles with extended warranty, bright island blue  
**\$29,800 or Best Offer**  
 Excellent Condition, Dealer Serviced,  
**Call 717-821-3629 or 717-866-0236**  
**Ready To Work**

**BINKLEY-HURST BROS. INC.** 133 Rothville Station Rd. P.O. Box 0395, Litz, PA 17543-0395 (717) 626-4705 1-800-414-4705 Fax (717) 626-0996

**Custom Built TARPS & COVERS**

For Grain Carts, Farm Trucks, Semi-Trailer Tarps, Boat Covers or anything that needs to be covered.

Call Today For Prices

**WILKENS WALKING FLOOR-TRAILERS**  
 100 Legion Dr., Bethel, PA 19507

**TARPS UNLIMITED**

877-858-5656 or 717-933-9950

**Lebanon Valley TRAILER SALES**

699 West Lincoln Ave., Myerstown, PA 17067

877-866-1610 Located along Rt 422 between Lebanon & Myerstown, PA Authorized Dealer for Belmont, Mid Atlantic, CAM Superline & Zook Trailers



14' To 20' 10,000 to 12,000 lb GVWR Equipment Haulers, Belmont & Zook Call for Special Pricing

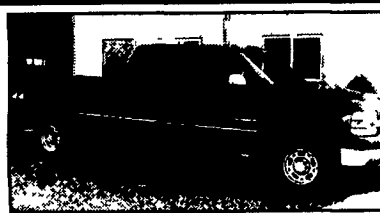


14' to 24' Deckovers & Goosenecks, 3,000 to 16,000 lb. GVWR Belmont & Zook

Custom Built Trailers Available

- Trailer Parts, Tires, Wheels & Accessories •
- Hitch Installation & Repair •

We also Specialize in Landscapers, Car Haulers & Dumps of all sizes.



**02 Chev. 2500 HD LS**  
 Crew cab, 4x4, Longbed, 8.1 Vortec, Allison AT, AC, PW, PDL, Cruise, Tilt, CD. Dual power seats, pmirrors, 9,200 GVW, 4 10 ltd slip rear, 55,000 mi, black \$24,500



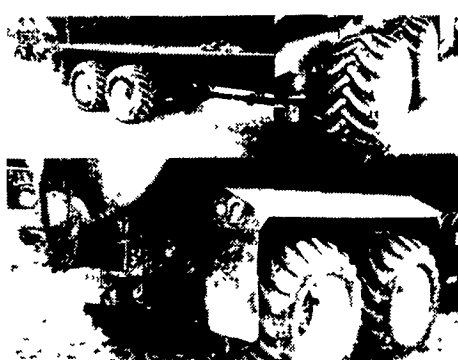
**03 GMC 2500 HD, 4x4**  
 6.0 Vortec, AT., AC., tilt, 9200 GVW, 4 10 limited slip rear, tow pkg, 9,000 miles, pewter \$21,700

**MARTIN'S AUTO SALES**

1025 W. Main St., New Holland, PA 17557

(717) 656-6621

We make trucks work in the field with **ALLIANCE** flotation tires



**High-Traction Flotation**  
 High-Flotation #328 #331

CUSTOM HEAVY DUTY WHEELS & TIRES FOR SPOKE OR BUDD HUBS. WE CAN MAKE WHAT YOU WANT!

Diller Equipment 800-640-4448

Somerset & Chambersburg, PA 814-629-9893

Stop Spinning Your Wheels, Call Us Today!

Hudson 20 ton tag-a-long trailer. (717)684-8602

1980 Custom Trailer, 20', 12 ton, needs work, \$2,500. 732-885-3018

**E.M. KUTZ, INC. TRUCK BODIES & EQUIPMENT**  
 READING, PA 800-974-9779 WHITEHALL, PA

**FALL SAVINGS**

USED EQUIPMENT - ALL ITEMS, AS IS

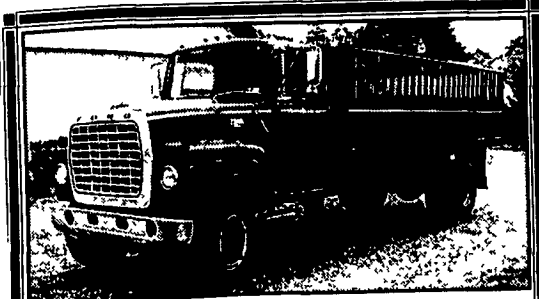
- Good Roads 11' x 48" Power Angle Plow - used 6 times \$1995
- Meyer HM-9-9" Power Angle Plow \$1525
- Meyer HM10 - 10' Power Angle Plow \$1725
- PennDOT Tailgate Spreader \$500
- Air Flo 8' Hydraulic Slip-in Spreader \$275
- 8' Gas Engine Slip-in Spreader \$300
- Meyer ST 7.5 E-Z Mount Plow w/power unit (fits '79 F150) \$1475
- Meyer ST 7.5 Blade with "A" frame, sector & cylinder, new condition \$625
- 325 Gal. Chausse Tar Kettle, 8 HP Engine \$6500
- 1999 Ford Pickup Bed, Tailgate & Bumper, White \$475
- Chev Dually Pickup Bed, 8', damage rt Side, with tailgate & bumper \$385
- 8' Steel E-Z Dumper \$350
- Reading Model SC99SEC Topper w/H D Ladder Rack \$950
- Reading Model SC10018 Topper with Ladder Bowes \$750
- 10'6" Steel Dump Body with Hoist & Bed Conveyors \$500
- 17' Aluminum Dump Body, 60" sides \$2500
- 14' Steel Dump Body, 52" Sides \$500
- 12' x 96" Omaha Platform Body with cab shield & racks \$550
- 14' x 94" Platform with Treadplate Floor & Bulkhead \$750
- 14' Reading Platform with solid sides \$450
- 14' Aluminum Flatbed with Skirting Tool Boxes \$450
- Upright Aluminum Hydraulic Tanks - take-offs \$150
- Rusted Utility Body bumpers & Tool Boxes \$125
- 1990 Athey Belt Loader - John Deere - diesel powered \$9500

**NEW EQUIPMENT**

- Omaha Steel Dump with Hoist & Cylinder, no pump 8' x 92" x 18" \$2000
- Omaha Steel Dump with Hoist & Cylinder, no pump 8' x 92" x 12" \$2000
- 8' x 96" Platform - bulkhead & light apron - no man rails \$500
- New Venco 415/516 Hoist \$1200
- Galion Steel dump - 10' x 7' x 26" x 32" - coal door - cab shield \$4489
- 8' Air Flo Stainless Steel Slip-in Spreader - top screens & battery, gas engine \$3389
- Fisher 1000 Series Plastic Tailgate Spreaders \$925
- Fisher Mild Steel Tailgate Spreaders w/o hoses \$1494
- Fisher Stainless Steel Tailgate Spreader w/o hoses \$2150
- Meyer ST 7.5' Plow, Complete - mounting available \$2567

COMPLETE INVENTORY OF DUMP BODIES, STAKE BODIES, TOOL BOXES, PLOWS & SPREADERS

CALL 800-974-9779.



**Ford F800, Scott 18' Grain Box, 33,000 GVW, 391 Gas Engine, 5x2 Speed Transmission, Super Nice (717) 933-9186**

**RIVER'S TRUCK CENTER, INC.**  
 2875 Cape Horn Road Red Lion, PA 17356  
 (717) 244-4903

Your New... *Western Star Dealer*



**1993 FORD E-350 15' Cube Van w/Attic, Gas, Automatic, A/C P/S, Railgate Just Traded, \$5,900**



**1990 FORD CF7000, Diesel, 5 Speed, Air Brakes, 29,500# GVW, 22' Reefer Body (Unit Not Working)**



**1990 Mack MS250, Diesel, 5 Speed, Air Brakes, 32,900 #GVW, 24' Dry Van, Liftgate, \$5500**



**78 FORD 10' DUMP w/PLOW Gas, Air Brakes, 39,000 GVW, 88,000 Miles \$5,400**

**THE HONDRO EXPERIENCE**

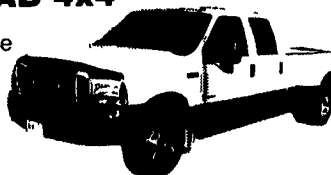
OVER 200 TRUCKS AVAILABLE FROM OUR 4 DEALERSHIPS

**E-TOWN DODGE**

Route 230 E-Town • 717-367-6644 877-924-6644

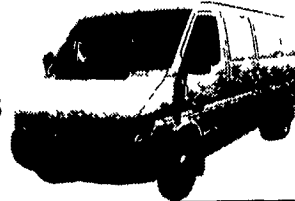
**2001 FORD F350 CREW CAB 4x4**

Dually, Powerstroke Diesel, Auto, AC, PW&L, Leather, DVD Player, 27,000 Miles



COME SEE THE ALL NEW DODGE SPRINTER VANS & WAGONS AT E-TOWN DODGE.

10 PASS. WGNS. SUPER HIGH VANS 6'3" INSIDE



**PHILLIPS FORD**

Route 72 Manheim • 717-665-3551 877-597-3551

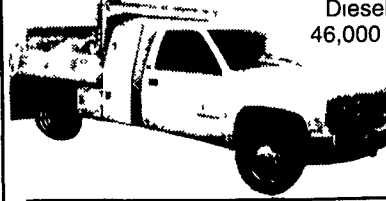
**1991 FORD F-350**

4x2 w/Dump Bed & Tool Box, Auto, V-8 \$7,995



**1995 GMC 3500 4X4**

Diesel, Auto, AC, 46,000 Miles, Dump 3F1068A \$17,995 \$16,995



**MANHEIM CHRYSLER GMC**

Route 72 Manheim • 717-665-2473 877-603-2473

**2003 DODGE RAM QUAD CAB**



4X4, SLT, V-8, Auto

**2001 GMC YUKON SLT**



V-8, Auto

**E-TOWN CHEVROLET**

Oldsmobile Pontiac Route 230 E-Town • 717-361-7776 877-924-6644

**2000 DODGE DURANGO SLT 4X4**

V-8 Magnum, Auto, PS, PB, PW&L, Equipped, 3rd Seat



- 2003 CHEVY 1500 CREW CAB 4x4, 12,000 Miles, V-8, Auto, AC, PW&L, PS, PB, CD
- 2003 JEEP LIBERTY SPORT 4X4 - V6, Auto, All Power Equip
- 2001 DODGE RAM 1500 - Quad Cab, 4x4, Auto, V-8 3 to Choose
- 2002 CHEVY TRAIL BLAZER LS, 6 Cyl., Auto, Equipped, 25,000 Miles 2 In Stock
- 2002 JEEP GRAND CHEROKEE, 4x4, 6 Cyl., Auto, 15,000 Miles

All prices Include Rebates, Exclude Tax, Tag and \$55 Doc Fee

**LOADS OF USED PICKUPS CALL ANY STORE FOR DETAILS**

Visit us @ [www.hondruauto.com](http://www.hondruauto.com)

OVER 10 CHASSIS IMMEDIATELY AVAILABLE FOR BODY INSTALLATION AT OUR LOCAL BODY COMPANIES!