

227 PETS

PUPPIES WANTED
ALL BREEDS - AKC, ACA, Pure & Mixed
Call Randy Brill 570/822-2033
 "SINCE 1970" - CHECK US OUT!



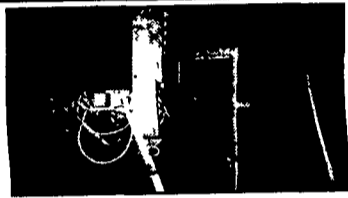
CALL FOR MY PRICE
 If you are satisfied, I will schedule your puppies and pick them up when they are ready to go (if you don't call, you will never know my price.)

PLEASE DO ME A FAVOR
 Give my name to anyone that has puppies.

PUPPIES NEEDED
 ACA & AKC puppies and other registries plus mixed breeds for resale.

Pampered Pup Kennels
 Russell Ford
(800) 307-7877

350 TRUCKS / TRAILERS



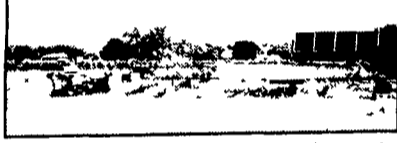
Cardboard Compacter - Complete with cylinder & electric pump **\$1,000**



50 HP Twin Cylinder Air Compressor **\$1,000**



4 Pond Aerators **\$250/ea.**



(2) 2 Ton Bridge Cranes **\$2,500**

610/689-8773

170 gal Plastic Tank, Totes, washed, plastic drums 717-397-7695
 Large bowed glass china closet 3 all glass show-cases w/counter Large Jigsaw w/24" throat (570)327-1305

Walk-in freezer w/2 refrigerators, 1 unit, 3 seperator doors, SS front, outside measurements 20'Lx11'7.5"H, good cond (717)629-0234

6" Craftsman Jointer motor & stand, good cond, \$250. (717)284-3509

WANTED Used 20,000-30,000 gal storage tank, 717/872-9009 or 717/371-5181

Gas driven AC Generator, government issued, rated at 15 kw, w/ 8 pwr factor, max output 13 amps on 220 volt very heavy duty, long life. \$500 (717)355-9777

Electric Fan motors - GE

new in box 90+,
 1/4 to 3/4 hp,
\$3,000 Takes All
717-432-3235

320 MISCELLANEOUS FOR SALE

Platform scale, 32"x40", 4000 lbs capacity, converted to digital read-out, on steel casters \$500 610-286-1655

For Sale Franklin XL 170 Log Skidder. Cutting torches w/small tanks & cart (814)944-8298

Model 71 lever action Winchester Rifle, 348 cal, stock & forearm birds eye maple, \$1,100. 410-758-4359

Electric pallet jack, Clark model 4P40, type F, 4,500 lbs w/battery & built-in charger, 53 hrs, \$3,500 obo. 717-367-7403

Food mixer, Middleby Marshall, 80 qt, model 1080G Titan, 2hp, 208 V, 3 phase. Bowl & paddles n/incl \$800 610-286-1655

Blue wooden storage bins \$5/ea lds avail for \$1/ea, new conveyor belt mat \$10/p roll, 1 barrel of food grade hyd fluid \$75, 1 barrel silicone based lubricant \$75 717-534-4392 or 717-534-5417

234 CARS FOR SALE

P.L. EICHELBERGER PAVING

40 YEARS EXPERIENCE
 RESIDENTIAL - COMMERCIAL
 DRIVEWAYS - PARKING LOT
 PATCHING - FARM LANES
 CONCRETE - SEAL COATINGS
 FULLY INSURED
 FREE ESTIMATES
FALL SPECIAL
SHOW THIS AD AT TIME OF ESTIMATE AND RECEIVE 10% OFF EXPIRES 11/30/03
717-225-1824 OR 1-866-762-3483

350 TRUCKS / TRAILERS

- 1977 Mercury, 2 Dr., 6 cyl, Auto, 42,000 actual mi, exc shape, nice paint, new tires, no rust **\$3,700**
- 1988 Ford F350 w/new 12' diamond plated bed & 5 ton hoist, good shape, 11,000 GVW, auto **\$5,000**
- 1985 Int model 1954 trash truck, 466 DT, 210hp, 5 spd., 33,000 GVW, 20 yd dumpster rear packer, VG shape **\$6,200**
- 1983 Ford F250, 4x4, truck w/new motor, rebuilt trans, rebuilt rears, w/factory side tool box, V. nice, red **\$4,500**
- 1984 Chevy Dump, 27,500 GVW, 27K actual mi, VG shape, new rubber **\$5,000**

(717) 582-0198

No Sunday Calls, Lv. Message



1989 Freightliner FLD120
 Cummins 365, 9 Sp., 590K+ Mi., Removable Sleeper, Spring Ride, Runs Good, Strong Truck, Alum. Wheels, **\$6,800**
717-529-2782



1995 Peterbilt 379 Truck Tractor
 249" WB, 48" Unibilt, standup sleeper, Cat 3406E, 455 hp, Fuller RTX16710C, 10 speed trans., air leaf suspension, 285/75R24.5 rubber, alum headache rack & tool boxes, full fenders, alum wheels, 200,000 original miles, 1-owner, Excellent cond. **\$45,000**
717-664-2444 days * 717-665-2239 eves

325 ANTIQUES / COLLECTIBLES

Antique grinder/cider press, fully restored, 2 baskets 570-784-4014

7" McCormick sm grain binder, not far from usable, fair condition (717)768-0618

CASH PAID for old glass, pottery, bowls, jewelry, old toys, lighters, watches, pens Call Lloyd (717)293-5078

330 RECREATIONAL VEHICLES

2000 5th wheel Crossroads, 1 owner, Like New (570)553-2415

'95 BMW R-100 RT, motor-cycle, 8741 mi ex cond, \$5400. 717-872-8038

340 CARS FOR SALE

97 Pontiac Grand Prix GT black w/sunroof after mkt wheels, good, clean, 129,000 miles, garage kept \$6,200. OBO Must Sell 717-721-3157

'65 Chevelle Malibu SS completely restored, 283 powerglide, owned since 1966. Must see! \$14,500 856-227-5934

1989 Agri Legend, leather seats, exc cond, \$2,995 (717)514-0304, 694-3269

88 Caprice wagon, new eng 17k mi ago, mech very well kept, looks good, \$1,600/obo Wynnewood (717)529-0860

'93 Ford Tempo GL, 4dr, V6 auto, PS, PB, cruise, tilt, air, new tires, 80,000 miles, black, \$1,800 717-733-2873

'95 Chevy Lumina LS, 4 dr, V6 auto, PS, PB, PW, PDL, cruise, tilt, air, 82,000 mi, black, \$3,700. 717-733-2873

'94 Pete 377, 435 Cat, 10 Speed, Good Tires, \$10,500
717/768-7339

"12' High Cube Van"

'95 Ford E-350 12' High Cube Van, Gas, Auto, P/S, A/C, 126K Miles, Rear Foldup Steps, Clean, Runs Great \$5,900
Call Ray at 856-424-6300

1983 IH DT466 Diesel Engine, 5-Speed Trans. with 2-Speed Rear Axle, Cab to Axle Length Approx. 164", Gross Weight 34,000
Cash Price \$3,500
Call 717-866-7518

1998 Peterbilt w/blower & wetline, low mileage Under 300,000
475 Cat w/warranty remaining from Cat
1995 Walinga trailer, 8 bins w/air stinger, new brakes and inspection, ready to go
 Will sell as a unit or separately
For more info call (717)587-1811 or eve. @ (717)664-4009.

FOR SALE

1987 Ford F-600
370 - V-8, ROLL-BACK
5 SPD & 2 SPD REAR
HYD BRKS - NO C.D.L.
P/S - A/C - CUSTOM CAB
9:00-20 RADIAL - EXC COND.
VERY CLEAN
MANY NEW PARTS
LOW MILEAGE
\$10,500 or best offer
(609) 726-1800

MISC.:

- Various Stainless Steel Tanks, Under 3000 Gal Call for Price
- 3/16" x 20' Pyramid Bending rolls **\$3,500**
- 6,000 Gal Stainless Steel, Vertical **\$3,200**
- White Cedar Fence Posts, prices per skid
- 2" - \$2.75 3" - \$3.25 4" - \$4.50 5" - \$6
- New & Used Gear Boxes, various ratios call for price
- 20,000 to 48,000 gal Epoxy Lined Tanks **25c/gal**
- 12" Air Locks **\$750**
- Roller, Walk-behind, Hat7 Diesel, Vibrator **\$1,500**
- Concrete Saw, 16' Diamond blade, gas powered, w/water attachmt **\$1,600**
- 4 Ton Machinery Rollers **\$55 ea**
- 24 Qt Dough Mixer **\$1,250**

WOODWORKING MACHINERY:

- Vollmer Band Saw Blade Grinder, model LIL - senior **\$750**

FORKLIFTS:

Good selections of used forklifts from 3,000-8,000 lbs

- 6000# Yale, Pneumatic Tire (Dual), 2-Speed Auto, Triple Stage, 1980 **\$6,900**
- 5000# Clark, Cushion Tire **\$5,200**
- 8000# CAT, Cushion Tire, std mast, manual transmission **\$3,900**
- 8000# Hyster, Cushion Tire, std mast, manual transmission **\$2,800**
- Genie Scissor Lift, 26 ft work height, 1999 mdl, like new **\$5,500**
- 5000# Nissan, pneu tires, std mast, automatic, Diesel **\$5,500**
- 3000# Clark Triple Stage, Side Shift, Cushion Tire **\$3,100**

METAL:

- Shears, Cincinnati, 1/2"x10', w/power back gauge **\$16,500**
- Jig Bore, Fosdick Sn 2222124, digital readout, NICE! **\$1,500**

CEDAR LOG HOMES:
 Build yourself Call for log prices
Phone: 717/354-3105, Fax: 717/354-4887