

**190 NURSERY**

Nicely shaped Douglas Fir, 6'-8', located Bedford, PA, 717-369-3216  
 Fraser Fir #2 & Brush \$5/ea York, PA (717)244-2608

Greenhouses (1) 48x117 gutter style, cooling pad, alum benches, (2) heaters, fans, (1) 28x96, cooling pad, benches, heater, fans, (1) 20x96 benches, fans, heater (1) 512 plug seeder w/5 plates (1) 512 plug extractor (410)775-2153

### Quality Container - Grown Trees



#### • Maples

Red Sunset, Autumn Blaze  
 October Glory, Autumn Flame

#### • Honeylocust

#### • Ash

#### • Flowering Pears • Dawn Redwoods

All trees in 15 gal. containers, 8-12 ft tall.

Call for pricing and availability.

#### Sauder's Nursery

1210 East Earl Rd., East Earl, PA 17519  
 717-354-9851

Christmas Tree's wholesale Douglas, Fraser, Canaan & Concolor Fir 6-12ft. Kindig's Christmas Tree Farm, Near Bloomsburg, Pa (570)683-5105

**Mushroom Mulch**  
**Hoover Farms**  
 Reading, PA 19605  
**610-926-2908**  
 No Sunday calls, please

15 yards \$95  
 30 yards \$140  
 45 yards \$200

FREE delivery within 50 miles  
 Pickup available

• Douglas Fir •  
 • Concolor Fir •  
 • Blue Spruce •  
 • White Pine •  
 • Norway Spruce •  
 • Serbian Spruce •  
 • Arborvitae •

#### Cut and B&B

FINE QUALITY AFFORDABLE PRICE

Delivery Available  
 Custom Tree Digging & Planting Available

**CHRISTMAS BARN FARMS**

P.O. Box 198  
 New Ringold, PA 17960  
 570-386-2107

### HALABURA TREE FARMS

21 Drehrer RD  
 Orwigsburg, PA (Schuylkill Co)  
**570-943-2137 office**

▲ Douglas Fir ▲ Norway ▲ Serbian  
 ▲ Concolor Fir Spruce Spruce  
 ▲ Hemlock ▲ Arborvitae ▲ Frazier Fir  
 ▲ White Pine ▲ Blue Spruce

Cut & B&B available • Reasonable Prices  
 • Delivery Available

Large Tree Transplanting Available  
 with Big John 80" Tree Spade

**570-943-2499 Dave**  
**570-943-7692 Fax**

**200 LAWN GARDEN**

Garland machine, automatic, foot pedal, w/wire & twine \$500 obo (717)786-0227

OVERSTOCKED Nursery 18" new spires \$9, Boxwood 15" \$8 50, Techny Arbs 24" 5 gal \$8 50, Azealeas 15" \$6 50, Blue Girl Holly 15" \$11, More var (814)942-2861

Douglas Fir, 6'-75' (610)797-4960  
 610-434-3943

Evergreen Brush & Boughs, Douglas Fir, Blue Spruce & S W White Pine (570)658-3536

Tree planter Tree spade Elevator JD 4wd dsl tractor NH skid loader 28' roll back truck Make offers (570)784-1331

New 30 X 95 Greenhouse w/2 side roll ups, \$3,100 New 20 X 96 \$1,395 (419)752-2704

DOUGLAS FIRS #1, 9'-16' for cutting or B&B Call for price list Cutting, balling, digging, loading &/or delivery are all negotiable Trees are located 10 mi North of Bloomsburg, Pa 908-578 7118

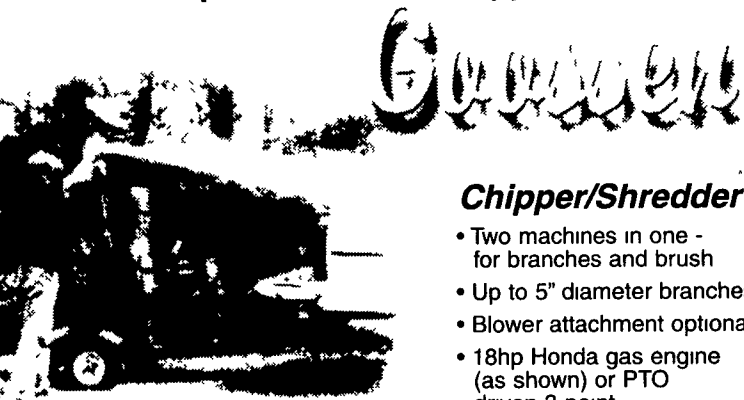
Tree Spades, 20" to 60", Tree Planters, 3" shoe to 24" shoe, Tree Boss, one-man tree loading system TREE EQUIPMENT DESIGN INC, RD1 Box 104, New Ringold, PA 17960 (570)386-3515

Nigra Arbs 6-7ft heavy, Densiforms Yews 30-36" & 20-24" Call for pricing (610)582-1941

DO YOU HAVE LARGE EVERGREEN TREES? We have a need for them Brokers Protected, Photo to Torsilieri, PO Box 19, Gladstone, NJ 07934

Compact tractor, Honda 6522, 4WD, power steering w/lldr, 450 hrs, mid & rear PTO, 3pt, 22hp dsl, Must Sell, \$7,000 obo 610-383-5616, 656-9308

### For Fall Seeding Use A Goosen Straw Blower For Fall Cleanup Use a Gosen Chipper or Shredder



#### Chipper/Shredder

- Two machines in one - for branches and brush
- Up to 5" diameter branches
- Blower attachment optional
- 18hp Honda gas engine (as shown) or PTO driven 3-point
- Anti-kickback device

#### Straw Blower

- Self feeding
- 1 - 2 bales per minute
- Cover approximately one acre per hour
- 6"x30" wear-resistant discharge hose
- 13, 16 or 18hp gas powered or PTO driven 3-point
- Rotor - pre-balanced hex shaft

**Goossen**  
 A Division of Harper Industries Inc.

**BINKLEY-HURST BROS. INC.**

Fax 717-626-0996

Available now at:

133 Rothsville Station Rd.  
 P.O. Box 0395  
 Lititz, PA 17543-0395  
 (717) 626-4705  
 1-800-414-4705

Farm Plan  
 A Service of FPC Financial

### CONTRACT DIGGING

Balls up to 54"  
 By Machine  
 We Buy Red Cedar

Call Bob  
**609/504-2999**  
**609/726-0031**

**Andy Demarco**  
**Buying Standing Timber**  
**Call 610-286-6054**

### Cattle Care Services

PROFESSIONAL HOOF TRIMMING  
 Can Trim 30-200 Cows Per Day.

Call 1-800-359-TRIM

Eves: Mayer 717-751-2551 717-309-6515 cell

Hydraulic Tilt Table

All Hand Tools



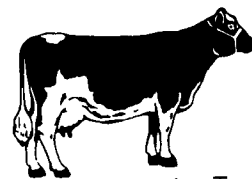
**HOOF TRIMMING**  
 Total Hoof Care

MARK W. BEAL  
 301-845-4376

10543 Glade Road  
 Walkersville, MD 21793

### HOOF TRIMMING

Bob Williams



David Ace

Quality Work. Not Just Another Trimmer No help needed upon request. 12 Cow minimum  
 Scheduling appointments 2-4 weeks in advance.  
 109A South King Street, Stevens, PA 17578  
**717/336-7921**

**A & A Contracting, Inc.**  
**717-365-3266 Gratz, PA**

Spray in place Polyurethane  
 Foam insulation.

Great for climate controlled  
 agricultural buildings.

### AMI SINAY

PROFESSIONAL HOOF TRIMMING  
 WE TRIM UP TO 200 COWS PER DAY  
 USING HAND TOOLS ONLY, WITH COMPETITIVE  
 HIGH QUALITY PERFORMANCE  
**VISIT US ON THE WEB**  
**WWW.HOOFTRIMMING.NET**  
 Terms and references available.  
 Satisfaction guaranteed!  
 Toll Free 1-866-828-TRIM  
 Ami Cell 717-309-2115  
 Eve - 717-428-0730/1317  
**REMEMBER: QUALITY COMES FIRST!**

**222 CUSTOM WORK**

### 3X3 4' TO 8' SQUARE BALING

HAY HI-MOISTURE OR DRY  
 STRAW & FODDER  
 QUANTITY DISCOUNT

CALL KENNETH (570) 644-2079 PITMAN, PA

### MOBILE FEED GRINDING

Lancaster Milling  
 Toll free 888-273-3236  
 Local 610-273-3220  
 Call anytime to leave message, or after 7pm to speak to Jeff Feister

**CATTLE HOOF TRIMMING**  
**(215) 345-0897**

**Flatbed Hauling**  
 24 ft. & 30 ft.  
 gooseneck  
 Will travel  
 High  
**Transport**  
**717-738-6994**

**L.L. Restoration**  
 Brick & stone  
 repointing on  
 old houses  
 and barns.  
 New stone  
 work retaining  
 walls, patios, etc.

**Lancaster Co.**  
**610-857-1228**

**221 MISCELLANEOUS SERVICES**

### Farm and Agribusiness Consulting

Are you looking for new insight to increase your farm or agribusiness resources such as income, management, growth strategies and even personal satisfaction? Working with you, we'll put my 40 years of farming and agribusiness experience and more than 20 years of government experience to work by helping build, expand and improve your business.

Allow me to help you with:

Cash flow management      Business Expansion  
 Partnership development      Generational Transfers  
 Government programs      Zoning issues  
 Securing loan packages      Leveraging assets  
 and many more areas of your business.

We focus on your bottom line!

John E. Barley Phone 717-872-0595 E-mail JEBBarley@aol.com



CALL 26-226 FOR

1-800-334-7432

All Your Bagging Needs