



NH 8870

1995, 4,900 Hrs., 185 HP ... \$42,000

- Case IH MX170 4x4, 900 Hrs . . . \$55,000
- Case IH CX70, 2 WD, Cab & Air . . . \$19,000
- Case IH 7250, 1994, 215 HP, Duals, 5,300 Hrs . . . \$46,000
- IH 1256, Fender . . . \$8,500
- Deutz Allis 6250, 4x4 w/Ldr. . . \$15,500
- Oliver 770, Gas, Tricycle . . . \$1,900
- NH 8870, 1995, 4,900 Hrs., 185 HP . . . \$42,000
- NH TC40D, Hydro, 4x4 w/Ldr . . . \$17,000
- JD 7410, Pwr. Shift, 4x4, Cab, w/740 Ldr . . . \$44,000
- JD 2555, Cab & Air w/7' Angle Blade . . . \$18,500
- JD 4440, Cab & Air, Quad Shift . . . \$18,800
- JD 4040, Pwr. Shift, Cab & Air, Very Nice . . . \$21,000
- JD 4240, Quad Shift, Cab & Air . . . \$18,300
- JD 2440, Late Style, Hi-Low Shift . . . \$8,200
- JD 8875, Skid Loader, Low Hrs. . . \$15,000
- MF 3140, 2WD, Cab & Air. . . Call
- MF 3090, 2 WD, Cab & Air. . . \$13,000
- MF 180, Dsl., Multi Pwr. . . \$4,400
- MF 251XE, 4x4 w/Ldr., 200 Hrs . . . \$18,500
- Clark 6,000 Lb Forklift, Good Condition . . . \$8,500
- JD 7000 6R Conservation Planter, Liq. . . \$3,700
- MF 18' Hyd. Fold Field Cultivator, Danish Tines . . . \$1,400

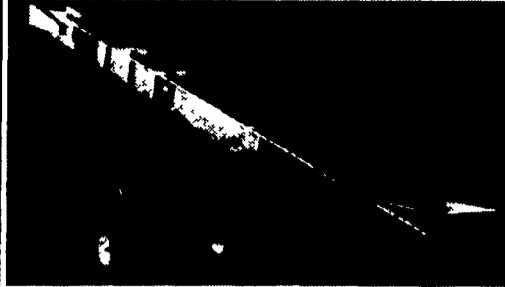
Financing Available

LLOYD M. BURKHOLDER

170 Cocalico Creek Rd., Ephrata, PA 17522
Between Brownstown & Rothsville

717-859-6616 or 717-859-4598

ZIMMERMAN HEAVY DUTY PORTABLE ELEVATORS



WELL BALANCED, RUGGEDLY BUILT FOR MANY YEARS OF TROUBLE FREE SERVICE

From 28 Ft. to 48 Ft. Available • 28 Ft. - \$2,600 • 32 Ft. - \$2,750

USED TRACTORS

- IH 1466 . . . \$9,200
- IH 1066 . . . \$8,200
- IH 1066 . . . \$7,600
- IH 1466 . . . \$8,800
- IH 1066 . . . \$8,800
- IH 1466, Rebuilt engine . . . \$12,000
- IH Cab Off of 1066, Nice . . . \$800

USED EQUIPMENT

- IH Loader Off of 1066 . . . \$1,800
- NH 402 Crimper . . . \$1,300
- Peerless Rollermill, Like New . . . \$5,750
- NH 892 Harvester w/Table . . . \$4,500



MILLER'S REPAIR

1 Mile North of Bird in Hand
8 Miles East of Lancaster
Ph. 717-656-6109

Diller Equipment

Chambersburg & Somerset PA
800-640-4448 814-629-9893

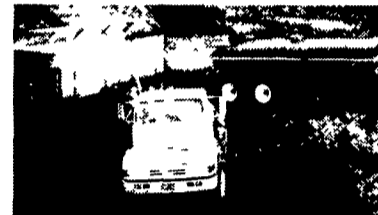
"Buy Direct And Get More For Your Dollar"



3500 - 4500 gallon New pull-types with brakes



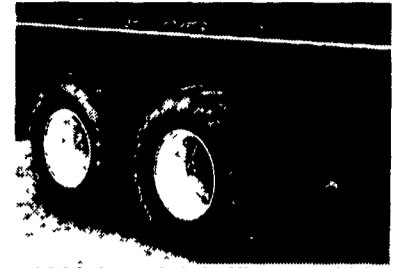
4000-5000 Gallon Truck Tanks in Stock



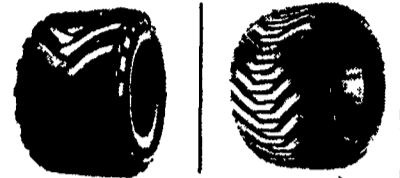
Call about our trailer system



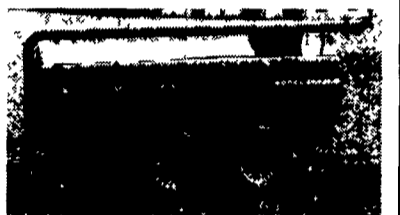
Big Wheels & Big Tires For Big Truck



600/50 x 22.5 (24" w x 46" h)
700/40 x 22.5 (27" w x 46" h)
Super Traction High Flotation



Heavyduty wheels to fit your truck
Budd or spoke hubs 22.5 or 24.5



Rebuild your old tanker for a fraction of the cost of new

WENGBERS OF MYERSTOWN TRACTOR PARTS

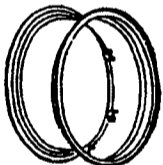
1-800-451-5240

www.wengers.com

A Leader in Tractor Parts Since 1958

814 S. COLLEGE ST. (ROUTE 501)

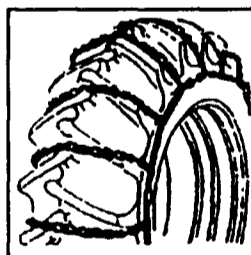
MYERSTOWN, PA 17067



Now Thru October 11, 2003 **25% OFF ALL USED RIMS IN STOCK**
All Styles and Sizes. Call for Pricing and Availability

TRACTOR TIRE CHAINS

CHAINS IN STOCK AT 1996 PRICES!!!!



HIGHWAY TYPE



TWIN GRIP TYPE

FRONT WHEELS

- 3"x15", 5 Bolt . . . \$55.00
- 6"x15", 5 Bolt . . . \$31.95
- 8"x15", 5 Bolt . . . \$38.15
- 8"x15", 6 Bolt . . . \$41.20
- 10"x15", 6 Bolt . . . \$47.00
- 4.25"x16", 5 Bolt. . . \$48.00
- 4.5"x16", 6 Bolt. . . \$39.15
- 6"x16", 6 Bolt . . . \$40.20
- 8"x16", 8 Bolt . . . \$63.90
- 10"x16", 6 Bolt . . . \$57.00
- 10"x16", 8 Bolt . . . \$72.00
- 5.5"x18", 6 Bolt. . . \$54.00

NEW TRACTOR WHEELS AND RIMS
SPECIAL PRICES GOOD OCT. 6 THRU 11, 2003

SIZE	APPLICATION	PRICE
REAR RIMS		
7"x24", 4 Loop		\$58.00
8"x24", 4 Loop		\$70.00
9"x24", 4 Loop		\$73.00
10"x24", 4 Loop		\$77.00
9"x28", 6 Loop		\$85.00
10"x28", 6 Loop		\$88.00
11"x28", 6 Loop		\$88.00
12"x28", 6 Loop		\$104.00
10"x24", 4 Rail		\$225.00
10"x28", 4 Rail		\$206.00
11"x28", 4 Rail		\$216.00
12"x28", 4 Rail		\$224.00
15"x28", 4 Rail		\$363.00
9"x36", 6 Clamp		\$175.00
11"x38", . . . Deep Well		\$176.00
12"x36", . . . Double B		\$188.00
12"x38", . . . Double B		\$128.00
14"x38", . . . Double B		\$137.00
16"x38", . . . Double B		\$160.00
18"x38", . . . Double B		\$172.00
18"x38", . . . Heavy Duty Double B		\$198.00

WE ALSO HAVE A LARGE SELECTION OF USED WHEELS AND RIMS