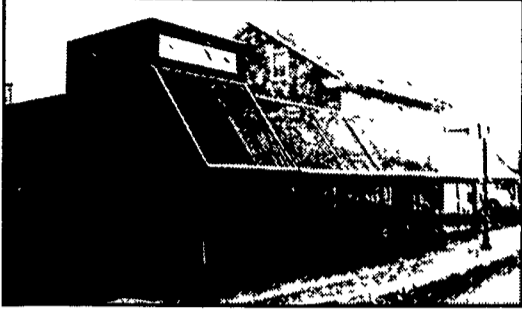


**ABSOLUTE AUCTION
COMMERCIAL
REAL ESTATE
MON., OCTOBER 20
@ 6 PM**



**18 E. Main St., Annville, PA
Inspection on Monday, October 6th
5-7 PM**

10,000 sq. ft. building plus 3 apartments and off street parking for 30 cars. Located in Historic District of Annville, Pa., near the square (intersections of Rts. 422 and 934).

First floor is a 5000 sq. ft. showroom with offices, bath & kitchen. Lower level is 5000 sq. ft. warehouse w/loading dock & ramp. Also on this level is an apartment consisting of 1 BR, LR, kitchen & bath. The second floor houses 2 apts Apartment one being a 1 BR, LR, kitchen & bath. The other second floor apt. is a 3 BR, LR, kitchen, bath & attic storage.

This is a wonderful opportunity to purchase a great multi-purpose building with excellent cash flow that is located in the heart of the downtown business section of Annville. The streetscape Project is now completed and this would make an excellent location for any business!

Terms: 10% deposit with balance due in 45 days. This is being sold absolute and will sell to the highest bidder regardless of price

Please visit our website for more info & photos at www.paefortna-auctioneers.com

717-867-4451 717-236-3752
AU1711-L/AU1367-L

**PAE
FORTNA
AUCTIONEERS**



Public Auction Register

**Closing Date Monday 5:00 P.M.
of each week's publication**

**Internet Sale Register will be updated
by Friday at 12 Noon**

ATTENTION AUCTIONEERS

All sales register info needs complete address, street, town, county & state.

**Public Auction
ESTATE OF
MARY CATHERINE KEPLER
LAND - REAL ESTATE -
TRACTOR
FURNITURE - ANTIQUES
SAT., OCT. 18, 2003
AT 9:00 A.M.**

Located in Mifflin Co., 4-1/2 miles west of Lewistown, PA., on Route 22/522, turn south on Lockport Road, 2 miles to farm.

Real Estate - Car - Tractor at 12:00 Noon
1980 Olds diesel 4 door sedan car, Farmall C tractor (needs clutch), cement mixer, approx. 60 acres will be offered in 5 separate parcels and as one complete unit, approx. 1/2 tillable, balance woodland. Property consists of a small 2 story barn, milk house, large cement block implement shed, etc., 2 story brick dwelling house built in 1938 w/walk-in basement, 2 B.R. on 2nd floor, large L.R., kit., D.R. and bath on 1st floor w/oil hot air heat. Property Will Have a New Survey!
Open House Inspection, Friday, October 10 from 10:00 A.M. to 2:00 P.M. or by appointment, and day before sale.

TERMS: 10 percent down, balance upon final settlement within 30 days. Reserve The Right To Reject Any Bids.

Furniture - Household - Collectables
A very nice listing of glassware, china, etc., Germany pcs., and a nice line of furniture. Auction Will Be Held in Large Shed!

Terms - Cash or Good Check Only! Food stand
Jack Kepler, Executor
Cincinnati, Ohio 513-232-8318

Joe Sikorsky - Attorney
Mark Gluck - Auctioneer
AU-349-L, 717-667-3795

WED. OCT. 29 - 6PM Die cast cars/trucks, promo cars by Ziegler Auct. AH081-L 717-533-4267.

THURS./FRI./SAT. OCT. 30/31, NOV. 1 Fall 2003 Regional Contractors Auction at Cochran Auct. Complex near Hagerstown, MD by J.G. Cochran Auct. 301-739-0538, 800-310-2844 (MD).
FRI. OCT 31 - 6PM Feeder at Sale, New Holland Sales Stables, Inc., 61L, 717-354-4342.

NOVEMBER

SAT. NOV. 1 - NY Holstein Harvest Sale, Cornell University, Ithaca, NY, Auct. Cattle Exchange AU-002463-E 607-746-2226

SAT. NOV 1 - 9AM Mel's Stables Horse Sales - Auctioneer, 834 Wallace Rd., New Holland, PA. Home: 717-354-8397; Barn: 717-354-6431.

SAT. NOV. 1 - 9AM Dairy Cows, heifers, farm mach., tools, at 153 Martin Rd., Pine Grove, PA, Schuykill Co., for Wilmer & Lucille Martin, by Snyder's Auct. Serv AU003489-L 717-291-5747 or 733-7052.

SAT. NOV. 1 - 9AM Longaberger baskets by Ziegler Auct. AH081-L 717-533-4267.

SAT. NOV. 1 - 9AM Real estate, horse trailer, diesel tractor, etc. 764 White Oak Rd., Strasburg Twp. Probst Family Auction 717-464-3700.

SAT. NOV. 1 - 12 Noon Estate auction, single sty 3-bdrm home on 11.27 acre lot with addition, at 3528 Powells Valley Rd., Carsonville, PA by Bryan D. Imes & Sons Auct. 717-527-2449

TUES. NOV 4 - Fed Cattle Sales Carlisle Livestock Market, Inc., 548 Alexander Spring Rd., Carlisle, Mkt. ph 717-249-4511; Buyer's ph 717-249-0396.

WED. NOV. 5 - Lumber & bldg supplies by Wolgemuth Auct. Dennis Wolgemuth #2357, 717-656-2947

WED. NOV. 5 - 9AM Cumberland Valley produce auction fall machinery consignment sale at Koser Road, 4 mi. N of Shippensburg, by Mike Quarrick AU003701L 717-530-5007

WED. NOV. 5 - 6:30PM Toys & Collectibles at 100 W. Jackson St., New Holland, PA by Diffebach Auct. AH000145L 717-355-7253.

THURS. NOV. 6 - 2PM 12 1/2 ac. Farmette, 2 1/2 sty stone dwl, barn at 163 Davis Rd., Coatesville,

PA, W. Caln Twp., by Randal Kline #499 717-627-0511.

FRI. NOV. 7 - 4PM Country split level on 1/2 acre lot in Earl Twp., New Holland on Sunset Rd., by Randal V. Kline #499, 717-733-1006.

SAT. NOV. 8 - Donation Auction for Autism at the Clearview School by Cattle Exchange AU-002463-E 607-746-2226.

SAT. NOV 8 - 8:30AM Christiana-Gap Fire Co farm sale. 82 Upper Valley Rd., Christiana

SAT NOV. 8 - 9AM Farm equip, woodworking, shop tools, farm items, hh gds, wood craft, at 461 Manada Bottom Rd., Grantville, PA by Nelson Ebersole AU001307-L 717-867-5221

SAT NOV. 8 - 9AM Building Material Auction. 8303 Pulaski Hwy., Rosedale, MD, Whirlpools, tubs, kitchens, etc. Winks Building Supply 410-574-1170

SAT NOV. 8 - 10AM Public auct. of farm equip, Bethel, PA. Gerald Hoover, AU2794, 717-933-5610.

THURS NOV 13 - 82 acre farm, 2251 Bainbridge Rd., Bainbridge, PA, Conoy Twp., Lanc Co Kline, Kreider & Good Auct. Lic #499, #2116, #3433 717-445-4309.



**FEEDER
SALE
WED.
OCT. 1
7:30 PM
Four
States
Livestock
Hagerstown, MD
Ext 29 off I-70
(301) 733-8120**

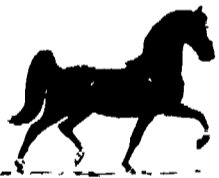
**Piedmont Invitational
Club Calf Sale
October 18, 2003 7:00 p.m.
Frederick Fairgrounds, Frederick, Maryland**



**Approximately 40 Select
Crossbreed Steers
Including Calves Sired By Top Bulls.
All Calves Are Broken To Tie
And Pre-Conditioned.**

Sale Manager: Kevin J. Diehl Ollie Bennett
445 Carrolls Tract Road Woodbine, MD 21797
Fairfield, PA 17320
(717) 642-5077

Dairy and Livestock Sales



Mel's Stable

**Selected Consignment
Driving & Drafthorse Sale**

Horses hitched at 8:30 A.M. Sharp
Sale Time: 9:00 A.M.



October 4, 2003

Sale held at 834 Wallace Road New Holland, PA

Directions: From Rt. 23 in New Holland, go south on Brimmer Ave. Go 2 Miles south on New Holland Road to Hill Road, turn left on Hill Road, proceed 1.2 miles to sale on the left. From Rt. 340 East of Intercourse take New Holland Road 2.5 miles to Hill Road, right on Hill Road to sale on left!

Approx. 75 Head of Standardbred Horses

Approx. 50 Head of Saddlebred Horses

**1 load from Jerome Wanner 1 load from Sam Esh Jr.
1 load from Elam Esh 1 load from Stephen Stoltzfus
1 load from Christ Z. Stoltzfus & Stanley Martin**

Special Mention

- 4 year old dark brown Morgan draft cross gelding with white markings, 16.1 hands, good built, good broke, one of a kind!
- 3 year old bay Morgan/Belgian cross gelding with white - These 2 are consigned by Lauren Schlabach from Ohio! -
- 3 year old black Dancer's Victory mare, dam is by Sierra Cosmos, big black trotting mare! consigned by Jerome Wanner!

Mel's Stable - Owner - Mel Hoover
Cash or Honorable PA Check Only

All Announcements Sale Day Take Precedence Over All Advertising.
Not Responsible for Accidents • Food on Premises

Mel Hoover - Auctioneer - AU-003111-L

Business 717-354-6431

Home 717-354-8397

Heifers Sold First

ATTENTION DAIRYMEN

Heifers Sold First



**Complete Grade Milking Herd
and Heifer Dispersal**

For Daniel and Barbie Lapp - Lititz, PA

To be held at
**Smoketown Quality Dairy Sales,
Smoketown, PA. Rt. 340.**

Thursday Oct. 9, 2003 - 7:00 p.m.

Heifers Being Sold First

55 Cows; 46 Heifers; 8 Calves 9 wks. to 10 wks. old; 10 Calves 6 mo. to 13 mo. old; 16 Bred Heifers, due Sept. to April; 10 Due Sept. to Jan. Balance Due June, July, August; 12 Breeding Age to Short Bred. These are big, strong heifers. All A.I. Bred and Sired by Select. Include: Storm, Mathie; Derry; Jasper; Magnum; Emerson. 1 Line back Heifer, Short bred. This is a top good uddered herd of cows, with type and quality. Herd Avg. 20,400, 3.8f, 785F-3.0-603; 73.3 lbs per cow. S.C.C. 160, Average Age 3 1/2 yrs; 10 2-year olds; 18 3-year olds; 13 4-yr. olds; Balance other. 17 Fresh since July, August, September. Cows due Sept. and Oct.

#19 - Due 2/27/04, 81lbs, proj. 20,753, 405D, 23,044, 3.9, 773, 3.1, 623

#227 - Her Storm Dtr., Fresh 7/17/03, 65 lbs.

#136 - 2-1-314, 21,246, 624F, 555p, Due 1/8/04, 98 lb.

#132 - 3-3-319, 24,377, 3.8, 933, 692, Due 4/27/04 78 lb.

#130 - 3 yr. old proj. 25,116, 1272, 738, 112 lb.

#126 - 3 yr. old, 411, 29,901, 4.6, 1359, 3.1, 942, due 12/11/03, 54 lb.

#95 - 3 yr. old, 305, 32,831, 850, 867, Complete 429, 40,847, 1142f, 1132p, Fresh 37 Days, 113 lb

#68 - Lineback, 5-1-351, 20,576, 3.4, 709, 3.0, 618, 78 lb, Fresh 5/22/03 78 lb. Dtr. Lineback Heifer, Short Bred

#775 - 285, 26,040, 3.1, 808, 693

#364 - 351, 29,349, 3.7, 1081, 815, Fresh 33 days, 94 lb.

Cows innoculated with 9 way kill virus.

Heifers - 9 way live virus at 6 mo. and 3 wks later, again at 1 year old.

Mel Hoover - Auctioneer AU003111-L

Danny Albright - Pedigrees

FREE Lunch
For the Dairymen
1 Hour Before Sale

If you have a surplus of heifers, call me for this dispersal.

Our 30th Year In The Dairy Auction Business

Sale Managed By

SMOKETOWN QUALITY DAIRY SALES

Gordon & Helen Fritz • 717-393-0930

"We Are Small, But We Do It All!!!"