

Sept. 29 - Oct. 5 **THIS WEEK WITH** **2003**

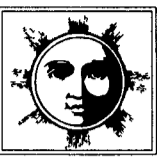
OCTOBER 2
First Quarter Moon

SEPTEMBER 29
Michaelmas

OCTOBER 2, 3
Best days to harvest aboveground crops

OCTOBER 4, 5
Best days to begin a diet to gain weight

The Old Farmer's Almanac

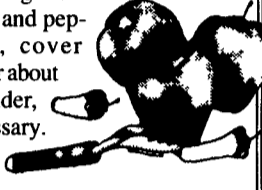


Michaelmas

Originally celebrated as the feast day of St. Michael, September 29, or Michaelmas, continues to serve as a seasonal signpost. In the British Isles, crops were harvested and sold by late September, so farmers paid their yearly rent to landowners on Michaelmas. Everyone ate goose at Michaelmas to bring prosperity, so many included "a goose fit for the lord's dinner" with their payment. Market fairs occurred just before the feast day, and large crowds made it convenient to hold elections then as well. The custom of fall elections has continued, but today they, as well as harvest celebrations and goose (or turkey) dinners, have shifted to November.

Red Cabbage with Apples

Sauté the onion in bacon fat until tender. Add cabbage and stir well to coat. Add wine, vinegar, and sugar. Bring to a boil and add apples, salt, and pepper. Reduce heat, cover tightly, and simmer for about 45 minutes until tender, adding water as necessary. MAKES 4 TO 6 SERVINGS.



WIT AND WISDOM FROM THE OLD FARMER'S ALMANAC

- On October 3, 1863, Thanksgiving became a U.S. national holiday
- If St. Michael (September 29) brings many acorns, Christmas will cover the fields with snow

FOR RECIPES, GARDENING TIPS, AND WEATHER FORECASTS, VISIT www.almanac.com

Mercer Livestock Auction

Mercer, Pa.
September 23, 2003
Report Supplied By PDA

CATTLE 452...(SUPPLIED BY THE AUCTION)...sl. steers 1.00 to 2.00 lower, sl. cows active, strong on top cows, heifers were steady.

STEERS: Choice 1-3 1100-1430 lbs 80.00-91.00, Select 1-2 65.00-75.00, Standard 1-2 53.00-60.00.

HOLSTEIN STEERS: Choice 2-3 1090-1500 lbs 72.00-83.00, Select 1-2 58.00-70.00, Standard 1-2 45.00-55.00.

HEIFERS: Choice 1-3 1200-1490 lbs 83.00-89.00, Select 1-2 72.00-80.00, Standard 1-2 47.00-60.00.

COWS: Breakers 75-80% lean 50.00-55.00 mostly 57.00-59.00, Boners 80-85% lean 40.00-48.00, Lean 85-90% lean 35.00-42.00. Shells 35.00 and down.

BULLS: Yield Grade 1 1850-1400 lbs 50.00-62.00, Yield Grade 2 1400-1950 lbs 45.00-55.00.

FEEDER CATTLE: STEERS: Medium 1 300-500 lbs 80.00-93.00, Medium 2 290-600 lbs 55.00-85.00; HEIFERS: Medium 1 350-570 lbs 73.00-88.00, Medium 2 690-840 lbs 49.00-70.00; BULLS: Medium 1 300-500 lbs 80.00-91.00, 500-700 lbs 45.00-75.00.

CALVES 61...VEALERS: Standard and Good 70-100 lbs 20.00-30.00, Utility 45-70 lbs 5.00-20.00. FARM CALVES: No 1 Holstein bulls 90-110 lbs 70.00-85.00, No 2 80-120 lbs 60.00-75.00.

HOGS 14...BARROWS AND GILTS: 45-50% lean 220-260 lbs 42.50-47.25.

BOARS: one 675 lbs 7.75.

FEEDER PIGS 0...NO MARKET TEST!

SHEEP 1...SLAUGHTER SHEEP: 30.00.

GOATS 6...(All goats sold by the head with weights estimated). Kids: Selection 2 10.00-15.00. Billies: 45.00-75.00.

Lebanon Valley Livestock

Fredericksburg, Pa.
Report Supplied By PDA
September 23, 2003

CATTLE 116...(PDA)...Compared with last week's sale...sl. cows were 1.00 to mostly 2.00 lower.

HOLSTEIN STEERS: few Select 1-2 56.75-64.75.

HEIFERS: one Standard 2 55.50.

COWS: Breakers 75-80% lean 42.00-46.50, one 48.25, average 45.33, Boners 80-85% lean 39.25-43.50, low dressing to 38.25, average 41.06, Lean 85-90% lean 33.00-38.00, high dressing to 40.00, average 35.39. Shells 32.00 and down.

BULLS: Yield Grade 1 1500-1595 lbs 46.75-50.25.

FEEDER CATTLE: STEERS: Large 3 485-760 lbs 46.00-52.00, one lot Small 3 620 lbs 45.50; BULLS: Large 3 940-1040 lbs 51.00-53.00.

CALVES 118...VEALERS: Standard and Good 75-110 lbs 45.00-72.00, average 60.48, Utility 55-95 lbs 15.00-42.00, average 24.50. FARM CALVES: Holstein bulls mostly steady...No 1 Holstein bulls 95-120 lbs 100.00-152.00 mostly 110.00-140.00, average 134.33, 80-90 lbs 77.00-85.00, average 80.67, No 2 80-120 lbs 60.00-100.00, average 80.48, few No 2 Holstein heifers 70-115 lbs 70.00-140.00.

Beef cross bulls and heifers 85-145 lbs 105.00-112.00, one 45.00.

HOGS 24...Sows were firm to 1.00 higher.

SOWS: 1-3 485-550 lbs 28.00-30.75, 550-650 lbs 32.75-33.25, Medium 340-450 lbs 15.00-23.50.

FEEDER PIGS 0...NO MARKET TEST!

SHEEP 0...NO MARKET TEST!

GOATS 3...(All goats sold by the head with weights estimated). Nannies: 100-120 lbs 63.00-79.00. Billies: one 45 lbs 24.00.

Morrison's Cove Livestock

Martinsburg, Pa.
Report Supplied by Auction
September 22, 2003

CATTLE: 126 HEAD.

STEERS: CHOICE 84.00-90.00, GOOD 78.00-83.00.

HEIFERS: CHOICE 83.00-88.00, GOOD 65.00-82.00.

COWS: UTILITY AND COMMERCIAL 42.00-60.00, CANNER AND LOW CUTTER 20.00-35.00.

BULLOCKS: GOOD & CHOICE 52.00-61.00.

BULLS: YG+N1, 46.00-58.00.

FEEDER CATTLE: STEERS 70.00-80.00; BULLS 62.00-75.00; HEIFERS 55.00-79.00.

CALVES: 123 HEAD. CHOICE AND GOOD 80.00-90.00, GOOD 68.00-77.00, STANDARD 25.00-45.00; HOLSTEIN BULLS 90-130 LBS. 60.00-140.00, HOLSTEIN HEIFERS 90-130 LBS. 75.00-390.00.

HOGS: 151. US+N1-2, 42.00-44.50; US +N1-3, 40.00-42.00.

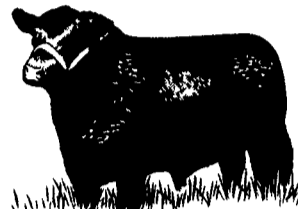
SOWS: US +N1-3 20.00-35.00.

BOARS: 8.00-24.00.

FEEDER PIGS: 57 HEAD. US +N1-3 20-50 LBS. 10.00-41.00.

SHEEP: 71 HEAD. CHOICE LAMBS 100.00-110.00, GOOD LAMBS 90.00-100.00, SL. EWES 32.00-40.00.

GOATS: 10.00-105.00 EACH.



Roofing & Siding

Channelrain
Available in 12 Colors

NEW PAINT

Century Drain
25 yr. limited warranty

Best Color Retention in the Industry
Full Line: Nails, Trim, Screws
Delivery Available • Manufacturing Custom Trim
Call for Discount Prices!

MARTIN'S ROOFING & SIDING
258 Walnut Bottom Rd. Rt. 81
Shippensburg, PA 17257 Exit 29
(717) 532-3460

LEESPORT FARMERS MARKET

LEESPORT, BERKS COUNTY, PA 19533 (610) 926-1307

LIVESTOCK AUCTION EVERY WEDNESDAY - 1:00 P.M.



Farmers Market 8:00 AM to 7:00 PM
Flea Market 7:00 AM to ??

Flea Market 7 A.M. to 2 P.M.
FIRST & THIRD SUNDAYS thru Dec. 6

visit our website: www.leesportmarket.com

Carlisle Livestock
Carlisle, Pa.
Report Supplied by Auction
Tuesday, September 23, 2003

SLAUGHTER CATTLE: COWS, BREAKERS 47 50-49 75, BONERS 42 25-47.00, LEAN 34.00-45.00, BIG MIDDLE, LOW DRESSING, LIGHTS 32.00-40.00, SHELLY 31.00 AND DOWN.

FEEDER CATTLE: FEEDER STEERS, HOSLSTEINS, DAIRY TYPES 500-775 LBS 56.00-60.00; FEEDER HEIFERS 350-600 LBS. 68.00-81.00; FEEDER BULLS 350-550 LBS. 88.00-93.00

CALVES RETURNING TO THE FARM, HOLSTEIN BULLS +N1 90-125 LBS. 110.00-150.00, HOLSTEIN HEIFERS +N1 90-130 LBS. 370.00-600.00; BEEF X HEIFERS 80 LBS. 80.00-90.00.

SWINE: SOWS US+N1-3 350-550 LBS. 30.00-31.50; BOARS 400-750 LBS. 6.00-7.00; FEEDER PIGS BY THE LB. 17-22 LBS 135.00-137.00, 35-45 LBS. 65.00-76.00.

GOATS: BY THE HEAD, MED AND LARGE NANNIES 48.00-90.00, FAMILIES 82.00-100.00, FANCY KIDS 58.00-66.00, FLESHY KIDS 38.00-55.00, SMALL, THIN 15.00-37.00.

LAMBS: GOOD AND CHOICE 40-80 LBS. 105.00-148.00, 85-100 LBS 80.00-94.00

SHEEP: ALL WEIGHTS 30.00-45.00

SALE EVERY TUES. 5 P.M. FOR RABBITS, POULTRY, EGGS, 6 P.M. FOR LIVESTOCK, STARTING WITH CALVES; SPECIAL FED CATTLE SALE TUES., OCT. 7; SPECIAL FEEDER CATTLE SALE TUES., OCT 7; STATE GRADED FEEDER PIG SALE FRIDAY, OCT. 10, RECEIVING 7:30 A.M.-10:30 A.M. SALE 1 P.M. RED CARPET HORSE AND TACK SALE FRIDAY, SEPT 17.

Small Animal Sale
September 23, 2003


RABBITS AND BUNNIES 60-7.00.

CHICKENS 1.00-4.00
BANTIES 30-1.75.
PIGEONS 1.40-3.00.
QUAIL 5.00.
GUINEA PIGS 1 50-3 50
TURKEYS 7.00
DUCKS 3 75-6 75
GEESE 4 25.

ALL POULTRY SOLD BY THE HEAD SALE STARTS AT 5 P.M.

CONESTOGA VALLEY LIME SPREADING

HI-MAG Agriculture Lime Spreading HI-CAL



Cash Discount Savings on Delivery
Call Toll Free day and evening
1-800-724-3277
Serving PA, MD, Delmarva, NJ, NY & (LI)

MIDDLEBURG LIVESTOCK AUCTION

Every Tuesday
Livestock Auction - 1:00 P.M.
Hay Auction - 11:30 A.M.
Small Animals - Noon
Produce Auction - 11:45 A.M.
Farmers Market - 8 A.M.-2:00 P.M.

UPCOMING SALES

- ★State Graded Feeder Cattle Sale★
Saturday, Oct. 4 - 1:00 P.M.
Accepting Cattle Friday Oct. 3 Until 8:00 P.M.
Weighed Upon Arrival.
- ★Fall Heifer Sale w/Monthly Dairy Sale★
Friday, Oct. 10
Heifers - 11:00 A.M. Cows - 12:00 Noon
- ★Fall Driving Horse Sale★
Thursday, Oct. 16 @ 6:00 P.M.
Earl Martin, Agent - 570-966-6219
- ★Monthly Feeder Cattle Sale★
Friday, Oct. 17 @ 7:00 P.M.
- ★Fall Riding Horse "Catalog" Sale★ and Craft Bazaar
Saturday, Oct. 18, 2003
Tack 10:00 A.M. Horses 12:00 Noon
Call Now To Consign!

- CONSIGNMENTS WELCOME -
Call 570-837-2222

3 Mi. East of Middleburg, PA on Rt. 522
P.O. Box 185, Middleburg, PA 17842
Bill Weist, Manager

JEFF MILLER'S "REAL DEAL" STEER SALE

OCTOBER 4, 2003

FREDERICK FAIRGROUNDS

FREDERICK, MD • 7:00 PM

Its the Real Deal because our steers WIN!!!!

THEY WON

You Can Too!!!

5 Consecutive Grand Champions, Harford County Fair
2 West Virginia State Fair Champions
Grand Champion Market Steer 2003 Eastern National
Res. Grand Champion Feeder Steer 2003 Eastern National
2002 Grand Champion Steer, Ohio State Fair

Pick your Champion October 4th

Jeff Miller
68635 200E
Cutler, IN 46920
(765) 268-2409



A Cash incentive will be awarded for Champions from this sale. At Next year's sale