

Public Auction Register

Closing Date Monday 5:00 P.M.
of each week's publication

Internet Sale Register will be updated
by Friday at 12 Noon

ATTENTION AUCTIONEERS

All sales register info needs complete address,
street, town, county & state.

SAT SEPT 27 - 10:30AM
Dump trucks, snow
plows, absolute car, at
York Springs Auto Auct.
by Rodger L Myers
000653-L, 1-800-222-
2038

SAT SEPT 27 - 11 AM
Absolute auction of 8
acre historic home on Elk
Cree at Bentley's Restau-
rant, Rt. 40, Elkton, Cecil
Co., MD, R.C. Burkemper
& Assoc., 410-287-5588.

SAT SEPT 27 - 12PM 31st
annual Angus Sale at
Heathcote Farm, Amenia,
NY, by Conover Auct.
Serv 641-227-3537

SAT SEPT 27 - 1PM Personal
property at 930
AM. 20 acre farm and
personal property. New
Bloomfield in Perry
County, West Perry
School District Ralph J.
Lesh, Jr CAI Auct. AU-
002093-L 717-567-3182 or
567-3523

SAT SEPT 27 - 2PM
Antiques, HH goods, Win-
ross/Hess trucks, banks,
tools, camper, at 5548
Old Phila. Pk., Lanc. Co.
PA by Robert Martin 656-
7700

SAT SEPT 27 - 3PM Real
estate, 3261 Compass
Rd., Honey Brook, PA W
Cain Twp, Chester Co by
Horning Farm Agency
Inc, AU2417-L 610-286-
5183

MON SEPT 29 - 5PM
Farm tractors/equip, skid
loaders, lawn/garden
tractors, at Cochran Auc-
tion Complex, 7704
Mapleville Rd., Boons-
boro, Wash Co., MD, by
J G Cochran 301-739-
0538.

TUES. SEPT 30 - 11AM
Restaurant/supermarket
equip at Giant Food
Store, 2540 MacArthur
Blvd., Whitehall, near
Allentown, PA by J.G.
Cochran 301-739-0538.

TUES. SEPT. 30 - 7:30PM
50 Cow herd from Union
Co at Fraley's Dairy Com-
plex Auct. 1515 Kepner
Hill Rd., Muncy, PA by
Fraley Auct. Co. 570-546-
6907.

OCTOBER

WED. OCT. 1 - 9AM Lum-
ber & bldg. material sale,
windows, shingles,
kitchens, hardware, lum-
ber, misc at 109 N. Maple
Ave., Leola, PA by Wolge-
muth Auct. #2357, 717-
656-2947

WED & THURS OCT. 1 &
2, 9 & 10 AM respectively,
complete dispersal 120
super Holsteins sell
Norco Farms Rt 11B Hop-
kinton, NY Delarm &
Treadway, 585-343-5449

WED. OCT 1 - 6PM Fig-
urines (Charming Tails,
Calico Kittens, Linda

farmette w/house, and
12 acre buildable lot, by
Probst Family Auct.
AU1856-L.

THURS. OCT. 2 - 7PM
Heifer & dairy cow auc-
tion at 437 Curryville Rd.,
Martinsburg, PA by Art
Kling, #00500, 814-766-
3551, 814-793-2296.

THURS. OCT. 2 - 7PM
Feeder cattle consig-
ment sale at Jersey
Shore Livestock follow-
ing reg. sale 814-349-
5099.

FRI. OCT. 3 - 10AM Full
line of farm mach, misc
at Creek Rd, Shamokin
PA by Neil A Courtney
AU002651-L, 570-539-
8791.

FRI. OCT. 3 - 10AM 2 m
NE of Belleville, PA 48 top
home raised Holsteir
heifers and a very good
line of farm mach. by
Mark Glick Auct Lee anc
Marty Peachey.

FRI. OCT. 3 - Schultz
Brothers Holsteins Com-
plete Dispersal & Cele-
bration Sale, Jerseytown
PA, by Cattle Exchange
AU-002463-E, 607-746-
2226.

THURS. OCT. 2 - 6PM 2
real estates at 471 King
Pea Rd., Little Britain
Two. Lanc. Co. PA 4.8 a

THURS. OCT. 2 - 7PM
Heifer & dairy cow auc-
tion at 437 Curryville Rd.,
Martinsburg, PA by Art
Kling, #00500, 814-766-
3551, 814-793-2296.

THURS. OCT. 2 - 7PM
Feeder cattle consig-
ment sale at Jersey
Shore Livestock follow-
ing reg. sale 814-349-
5099.

FRI. OCT. 3 - 10AM Full
line of farm mach, misc
at Creek Rd, Shamokin
PA by Neil A Courtney
AU002651-L, 570-539-
8791.

FRI. OCT. 3 - 10AM 2 m
NE of Belleville, PA 48 top
home raised Holsteir
heifers and a very good
line of farm mach. by
Mark Glick Auct Lee anc
Marty Peachey.

FRI. OCT. 3 - Schultz
Brothers Holsteins Com-
plete Dispersal & Cele-
bration Sale, Jerseytown
PA, by Cattle Exchange
AU-002463-E, 607-746-
2226.

THURS. OCT. 2 - 6PM 2
real estates at 471 King
Pea Rd., Little Britain
Two. Lanc. Co. PA 4.8 a

COMPLETE AUCTIONEERING SERVICE PUBLIC AUCTION

FRIDAY, OCTOBER 10, 2003 1:00 P.M.
Buffalo Township, Union Co., PA. 125+/- Acre Farm



Directions: From Lewisburg Rt 15 take Rt 45 west approx 4 miles just past Purple Cow ice cream stand, turn right on Johnson Mill Road, travel 3 1/2 miles, turn left on Col Kelley Road, travel 1 1/2 mile, turn left on Miller Road, Auction 3/4 mile ahead at end of Township Road

Parcel #1 71.8 Acres
The acreage is 16 wooded 49 tillable 5 acres pasture w/high tensile fence & 1 acre for homeste Located on the property is a modern 50 stall dairy barn w/stainless steel pipe line, 1,000 gal bulk tank a 16'x70' & 18'x70' silo complete with unloaders & a 21 ton Farmer Boy ag feed bin A large bank barn with loose housing as well as a 45'x60' addition for loose housing Also located on the property a 32'x40' pole building for shop & equipment storage The home is a 6 bedroom 2 story w/2 full baths, lg open kitchen w/oak cabinets, a very lg walk in pantry Located off the kitchen is a lg deck A lg living room w/walk-in closet, dining room & first floor bedroom or office

Parcel #2 53.46 acres (adjoining parcel #1)
The acreage is 47-1/2 tillable & 4-1/2 acres wooded very ample frontage on Township Road for easy access All this located at the end of a township road for added privacy
Open House Sat. September 13, 03 from 11 to 6 P.M. & Friday September 26, 03 from 1 to 6 P.M.

KENNETH E. HASSINGER
RR 02, Box 985
McClure, PA 17841
(570) 658-3536
AU-001532-L



NEIL A. COURTNEY
R.D. #1 Box 239
Richfield, PA 17086
(570) 539-8791
AU-002651-L

FARMS FOR SALE - New Listings

Genesee County - a state-of-the art 200-cow barn and parlor. Very nice home, former tie-stall barn plus other buildings. Many features on 80 acres. Buy your feed or land available to rent.

Western New York - 750 acres, 400-cow facility with many new buildings. Great heifer facilities, very nice home, shop, much more!

Call David Kent at 585-739-5609

Wm. **KENT** Inc.
AUCTIONEERS R.E. BROKERS
www.williamkentinc.com
BOX 58, STAFFORD, NY Ph: 585-343-5449

PUBLIC AUCTION VALUABLE REAL ESTATE FRI. OCTOBER 3, 2003 AT 11:00 a.m.

The Auction will be held at 1915 Cosner Rd., Forest Hill, Md Harford Co From Jarrettsville go south on Rt 165, turn East onto Putnam Rd. take Putnam to Phillips Mill, to Cosner

The farmland consists of approx. 80-acres of land more or less, improved with older farm house, pole barn, and other misc. out buildings. The property is in the 4-th election district of Harford Co. Known in the Harford Co. land records as book 242, page 449 Property will be sold for estate of Flora Ellen Miller, (N. Marilyn Voelcker, personal Rep.) For more information or inspection of property please call Attorney Judy Silverstein (of Stark & Keenan,) 410-879-2222, or Doug Miller at 410-557-8308, or 717-382-4086. Prime land for farming or building. Property will be sold AS-IS, WHERE-IS, with no warranties or guarantees **TERMS OF AUCTION:** A deposit of \$10,000.00 in cash or certified funds on day of auction, with balance to be paid within 30-days after auction.

Seller: THE MILLER FAMILY
Nevin E. Tasto, Auctioneer, 410-374-4067

Public Auction Valuable Residential Real Estate Friday October 3, 2003 @ 6:00 PM

362 Buck Road / Quarryville, Lancaster County, PA Real Estate features a lot of ground containing 21,807 square feet or 1/2 acre more or less located in East Drumore Township and is known as 362 Buck Road, Quarryville, PA. (west of Quarryville Borough). Thereon is erected a two (2) story masonry and frame constructed house with three (3) bedrooms, bath and powder room, living room, dining room and kitchen. There is an oil fired hot air heat system, a free standing garage and tool shed located to the rear of the property and an on site well.

You are invited to inspect this property Tuesday September 23rd from 6:00 PM until 7:30 PM. Terms are 10% down at time of auction with balance due at settlement in 45 days.

Auction for
Mrs. Kathryn Martin
Elmer Murry Auctions, Inc.
-AU-648-L-
Professional Auctioneer, Appraiser and Advisor
Our Services Are Not a Sideline
(717) 626-2636 Fax (717) 627-6757

CHRISTIANA - GAP FIRE COMPANIES FARM SALE SAT., NOV. 8, 2003 8:30 A.M.*

*Located at Ben K. Stoltzfus Farm
82 Upper Valley Road, Christiana, PA*
CARRIAGES - HORSES - PONIES
TOOLS - FARM EQUIPMENT
MILKING EQUIPMENT - TACK
CONSIGNMENTS WELCOME
DONATED ITEMS APPRECIATED
To have Items advertised call by October 7th.
Call: Elvin Beiler 717-442-9549
Daryl Maser 610-593-1017
All Items sold on a Commission Basis
Credit Cards Accepted,
No Out of State Checks.
Terms By:
Christiana - Gap Fire Companies
Phone (610) 593-2142 (Christiana)
Phone (717) 442-8100 (Gap)
P.O. Box 46, 214 S. Bridge St.
Christiana, PA 17509
Not Responsible for Accidents
Plenty of Free Parking
WATCH FOR FULL AD LATER

HUGE ABSOLUTE EQUIPMENT & SHOP TOOLS AUCTION!

HONEY BEAR ENTERPRISES INC.
At two day absolute public auction!!!
Auction to be held along Rt. 194 1 mile north of Abbottstown PA on right approx. 2 miles south of East Berlin PA on left. Watch for sign
MONDAY, OCTOBER 27th 11 A.M.
Day #1: We will sell shop tools and all related items.
TUESDAY, OCTOBER 28th 9 A.M.
Day #2: We will sell construction equipment, farm equipment, trucks, contractors tools and all related items. Do not miss this auction!
Please check out our website after Oct. 1st for a detailed listing
www.mcgrewequipment.com
Call For Brochure
See Lancaster Farming Oct. 11 & 18 Issue
For More Detailed Listing
Auctioneers Mike Quarrick AU003701L
Dennis Wolgemuth AU2357L
Matt Quarrick AU003914L
Gregory McGrew AA002881
G.W. McGrew Auction Co.
Greg McGrew manager
717-428-0922 410-299-3326
www.mcgrewequipment.com
Mcgrewequipment@msn.com

REAL ESTATE AUCTION SAT., OCT. 11, 2003 AT 11 AM

Located at 230 North Crossroads Road, Lykens, PA

Directions: Between Gratz & Berrysburg, take Rt. 25, turn on N. Crossroads Road at Crossroads Market 1/4 - 1/2 mile on right.

REAL ESTATE: Newly remodeled single story home, large kitchen & dining room with vaulted ceiling. (All rooms have ceiling fans). 3 bedrooms with closets, master bedroom w/bath & walk-in closet. Home has 2 bath rooms, laundry room, family room w/wood stove. Home is approx. 28'x68'. Oil hot air heat and very good condition. Sand mound septic. View of mountains, mature shade trees. 11'x24' patio.



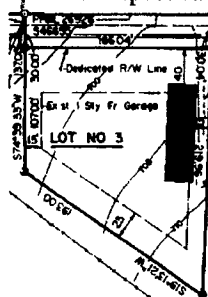
House

Also 2-story building approx. 24'x84' with own well & electric. Partial basement. Was a chicken house at one time. Many possibilities for this building.



2-Story Outbuilding

To inspect call Jim Lewis 717-761-2981.



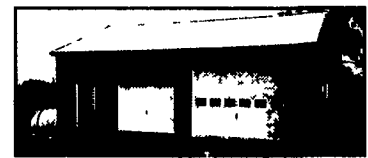
Approximately .729 acres in
Amish Country.
Tax Parcel #39-15-33
TERMS: 10% down, balance due in 60 days.
Attorney: Kerwin & Kerwin

OWNER: JOHN S. LEWIS
AUCTIONEER: LINN LENKER
AU-3745-L 717-362-3537

PUBLIC AUCTION VALUABLE REAL ESTATE

1 1/2 STORY 4 BDRM. - 1.38 ACRE LOT
2 STORY BARN and 2 CAR GARAGE
SAT., OCTOBER 11, 2003
1 P.M.

LOCATION: 651 Gristmill Rd., Ephrata, Pa. Earl Twp.
DIRECTIONS: From Rt. 322 in Hinkletown take Martindale Rd. approx. 2 miles. Turn left on Gristmill Rd. in Martindale. Approx. 6/10 mile to sale on left.



REAL ESTATE of 1 1/2 story masonry house with vinyl siding.
1st floor - Eat-in country kitchen with oak cabinets by Wood Creations; living room and family room with carpet; full bath; 2 bedrooms.
2nd floor - 2 bedrooms (one unfinished); hallway with closets; attic storage space.
Full basement with daylight entrance. Oil fired radiant floor heat. Approx. 1720 sq. ft. of finished area. Aluminum clad soffit and fascia. Well with pressure system and cistern with pressure system. On-site septic system.
Two-car, metal siding, insulated garage with gas heat and large shop area. (27x36)
Two-story frame barn (20x25), with fenced in meadow.
Lots of shade, nut, and fruit trees. All on 1.38 acre lot with large garden area.
OPEN HOUSE DATES: September 27 and October 4 from 1 to 4 P.M. or by appointment.
TERMS: 10% down day of sale. Balance on or before December 30, 2003.
AUCTIONEER'S NOTE: This country setting has a beautiful country view. Don't miss this opportunity to purchase this well kept property.

GROFF AUCTIONEERING
Lewis Groff AU1471-L
Daniel Lapp AU005048
717-354-7826

LEROY AND NANCY LEID
717-445-0915
Atty: Linda Kling