

**Ida's
Notebook**
by
Ida Risser



Where has the summer gone? The end of September is here and so is cooler weather. The other week we went to a chicken barbecue in rainy weather. We had to park quite a distance from the tent where the meal was served.

The first thing that happened was that one of our umbrellas turned inside out. Then I think that mine leaked as my hair got

very wet. We were crowded at long tables to eat our big meal. There also was a very long line for people to get a take-out meal. One almost wishes that we had stayed home and ate hot dogs and baked beans.

Our township has decided to publish a big hardback book on the history of Manheim Township. This is in celebration of 275 years. Lancaster County was

first established in 1729. This was about the time that my ancestors came from Switzerland and Germany to Pennsylvania.

The 264-page book contains many pictures of early schools, homes, trolleys, toll houses, and mills. I was able to contribute some pictures as my mother took a lot of photos around 1910. It is an interesting book for longtime residents of the township as well

as an informative book for newcomers.

Now I shall have to pick some green beans and cucumbers before we have another shower. Everyday I seem to be canning tomatoes or freezing beans and applesauce. But, I'm glad to have something to keep me busy.

Allen has been getting out of the house more than before and he has trimmed the raspberries.

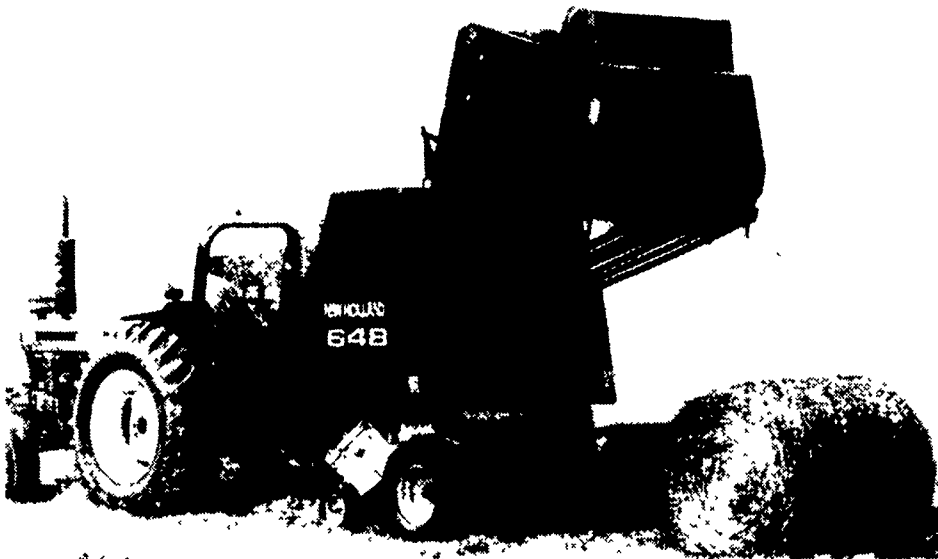
New Holland - First in Grassland Farming



Knock down your biggest fields - FAST

For speed, high-volume capacity, top-quality cutting, and all-day comfort, nothing beats the New Holland Model HW340. It combines New Holland's legendary Speedrower® dependability and top capacity with high-performance Discbine® disc mower-conditioner technology.

- Makes fast work of even the toughest fields - 12-disc modular cutterbar makes a wide 15-1/2-foot cut
- Each disc is an independent module - sealed in its own oil and connected by short, hardened alloy drive shafts - for fast, easy, service and repair
- Exclusive 20-inch auger efficiently delivers cut crop into the conditioning rolls
- 102-inch chevron-design intermeshing rubber conditioning rolls condition crop gently and thoroughly
- Power reverser clears plugs fast
- Conditioning rolls can be easily removed when conditioning isn't needed
- Entire disc cutterhead can be removed and replaced with a New Holland 2300 Series sicklebar header in as little as 30 minutes
- 166-hp turbocharged Genesis™ engine provides plenty of power to knock down your biggest fields fast

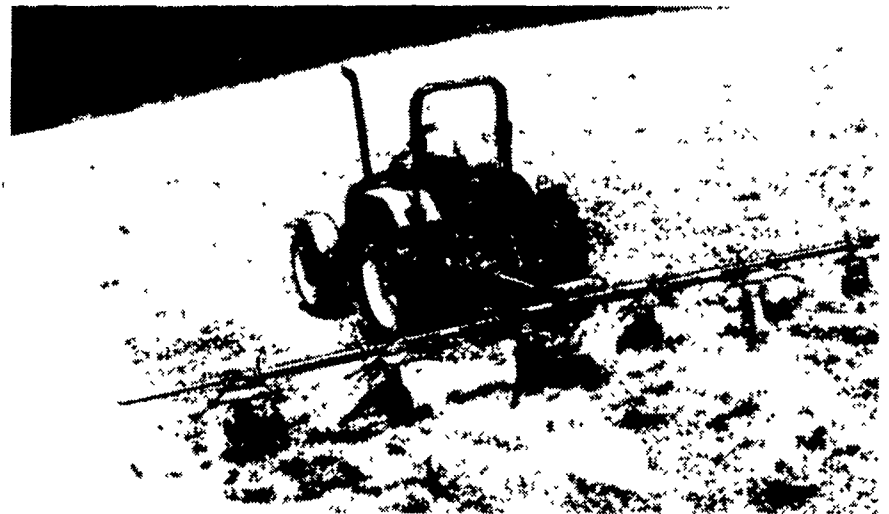


'Silage Special' bales wet or dry

For making 4-ft.-by-5-ft. hay, straw, or silage bales, there's nothing better than the New Holland Model 648 Silage Special. This Roll-Belt™ round baler has everything you need to bale crops your way:

- Bale-Slice™ option (on Fastnet™ models) cuts crop as the bale is formed, making it more dense and easier to feed or grind
- Wide, floating pickup swallows large windrows
- Endless belts—covered by three-year Bonded Protection—provide added durability in tough crops

Ask us about the Model 648 Silage Special today!



Fluff 3 windrows in one pass

You'll cover acres fast, and bale or chop sooner with the Model 169 tedder. It uses six rotors to ted a wide 22'8" area. That's wide enough to fluff three windrows from a 9' mower-conditioner. Yet transport width is a narrow 9'8" for easy maneuvering. The frame of the "169" is fully articulated, so it hugs the ground to fluff all of your crop for fast drying. And the Digidrive® coupling provides smooth, reliable operation.

Beat the weather with the Model 169. Stop by for details.



SEE YOUR NEAREST NEWHOLLAND DEALER FOR DEPENDABLE EQUIPMENT & SERVICE

PENNSYLVANIA

Abbottstown, PA
Messick
Equipment
RD 1, Box 255A
717-259-6617

Carlisle, PA
R&W
Equipment Co.
35 East Willow Street
717-243-2686

Pitman, PA
Schreffler
Equipment
Pitman, PA
570-648-1120

Annaville, PA
BHM Farm
Equipment, Inc.
RD 1, Rte. 934
717-867-2211

Elizabethtown, PA
Messick
Equipment
Rt. 283 - Rheems Exit
717-367-1319

Tamaqua, PA
Charles S.
Snyder, Inc.
R.D. 3
570-386-5945

MARYLAND

Frederick, MD
Ceresville New
Holland, Inc.
Rt. 26 East
301-662-4197
Outside MD, 800-331-9122

Hagerstown, MD
Antietam Tractor &
Equipment Inc.
Leitersburg Pike
800-553-6731
301-791-1200

Rising Sun, MD
Ag Industrial Equipment
Route 1,
50 N. Greenmont Rd.
1-800-442-5043

NEW JERSEY

Washington, NJ
Smith Tractor &
Equip., Inc.
15 Hillcrest Ave.
908-689-7900

Bridgeton, NJ
Leslie G. Fogg, Inc.
Canton & Stow Creek
Landing Rd.
856-451-2727
856-935-5145

Woodstown, NJ
Owen Supply Co.
Broad Street &
East Avenue
609-769-0308

