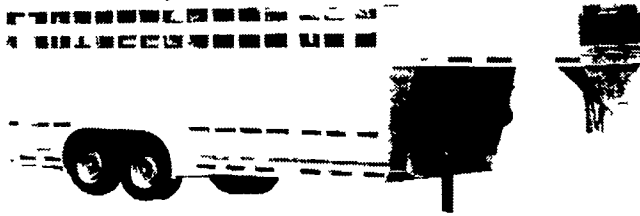


350 TRUCKS / TRAILERS

www.useddieseltruck.com  
**CHECK IT OUT**

# TWO WORDS:

Only from the leader in livestock transportation.



**Gooseneck models** - available in lengths 14' to 32' and widths from 6'-5" to 8' 6" heights from 6'-6" to 8'



**Bumper Hitch models** available in 13' & 16' lengths

## RESALE VALUE.

Nothing Holds Its Value Like An Eby.



**The Agri-Transportation Innovators**

ALUMINUM

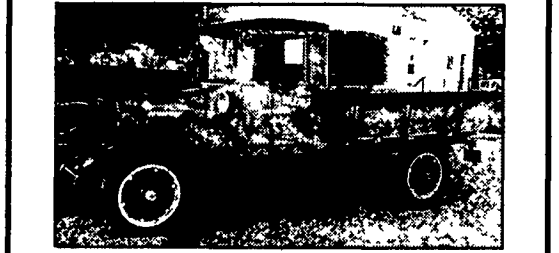
Visit us at our website [www.mheby.com](http://www.mheby.com) or call for the name of the dealer nearest to you

**BLUE BALL, PA (800)292-4752**

**97 Dodge 3500 Laramie SLT Diesel, Rebuilt Auto Trans., New Tires & Brakes, Towing Package, Great Farm Truck!! \$14,500**  
Fox Farms, Lebanon, PA  
Kevin @ 717-821-5516

**Guest** PO BOX 187  
3865 Old Hornsburg Pk  
Mt Joy, PA 17552  
717-898-5863  
FAX 717-898-5865

ROAD AND STORAGE TRAILERS • SALES/RENTALS  
**800-729-4900**



1929 Int one ton, show room cond., history with truck  
**\$10,000**

- (13) Trailmobiles 45'x13'6", 10x22 on Dayton rims, swing doors, alum, rib sides **\$1,200/each, 5 or more \$1,000/each**
- (13) 28'x102 Pup trailer, Freuhauf's & Stricks, OHR rears, 11-24 5 tires Dayton & Budd **\$500 each**
- (4) Converters dollies w/spare tire, 11R24 5 on Budds **\$600/ea.**
- (6) 45 ft. Budds, swing doors, 11 22 5 on Dayton's, 13'6"x96 smooth alum, white **\$1,200/ea. or take 'em all for 800/ea.**
- (7) 45 ft. Sticks, swing doors, smooth alum, white, 10x20 on Dayton's **\$800/ea.**
- 35 ft. single axle Gindy van w/elec lift gate, swing doors, nice older trailer **\$600**
- 42x96 reefer, 2 curb doors, 1 road door, overhead rear, 10x20 on Dayton's (unit will need a battery) **\$1,600**



131 Kline Rd., Bethel, PA 19507  
We're Located Right On I78 @ Exit 17

**WE BUY TRUCKS!**

**717-933-9792**

Fax 933-9782 [www.besttrucks.net](http://www.besttrucks.net)

<p><b>1996 International 4700 16' Reefer, DT466-210hp 5 Speed 282K Miles 25 500 GVW Hydraulic Brakes Carrier Titanium Cools to 10 Degrees Morg in Aluminum Body</b> <b>\$13,500</b> FH248160</p>	<p><b>1996 Volvo WG42T Single Axle Daycab, Cummins M11 280hp 10 Speed Spring Ride 33 000 GVW White AC 264K Miles Former Lease Unit</b> <b>\$15,500</b> TN843440</p>	<p><b>(2) 2000 Pete 379EXH 63 UltraCab Cat 3406 75 Hp RTLO 10 Speed 364K/411K Miles Blue 10 Aluminum Wheels Jake Brake LP22 5 All New Michelin Tires &amp; Brakes 80%</b> <b>\$46,500</b> YD480744</p>	<p><b>1995 GMC 16' Stepvan, 6.5L Diesel, 5 Speed, 1000 GVW, White, 123K Miles, Trade terms, From leasing Company</b> <b>\$7,250</b> S250114</p>	<p><b>1996 FL70 24' Flat Bed, Cummins 8.3 250hp 6 Speed 167K Miles 33000 GVW Air Brakes AC 24 Covered Wagon Railgate Green Spring Suspension</b> <b>\$13,900</b> TL638633</p>
<p><b>1995 Isuzu NPR 16' Van Gas V8 Automatic AC White 11 050 GVW 1 Owner/Never in An Accident Roll Up Rear Door Step Bumper</b> <b>\$11,500</b> SJ002658</p>	<p><b>1998 Pete 379EXH 63 Unbuilt CAT 3406E 475hp 15 speed 584K miles Green Virgin Tires This truck is new inside and out!</b> <b>\$38,500</b> WD461024</p>	<p><b>1998 Isuzu FTR 26' Van Diesel 200 Hp 6 Speed AC 25 950 GVW Hydraulic Brakes White Roll Up Rear Door 52K Original Miles 1 Owner/Never in An Accident</b> <b>\$26,250</b> WJ600505</p>	<p><b>1996 Kenworth T300 22' Cab &amp; Chassis, 36 removable box sleeper Cummins 8.3 250hp 9 speed 160K miles AC 3 90 rears 33000 GVW,</b> <b>\$16,000</b> TM684233</p>	<p><b>1999 GMC 3500HD 10 Dump Gas Automatic 21K Miles White AC 15000 GVW Mason Dump Fold Down Sales Bench Seat</b> <b>\$19,500</b> XF039199</p>
<p><b>1998 FTL Century Class, CAT 3406 500hp 10 speed 601K miles Jake brake 2 Alum wheels Blue double bunk Tilt/elec wheel</b> <b>\$24,900</b> WL955947</p>	<p><b>1998 IHC 4900 22' Reefer, Just Overhauled! DT466 190hp 6+1 Transmission 245K Miles Hydraulic Brakes AC White Elect Standby, Corner, Roll Up Door Extruded Floor</b> <b>\$15,900</b> WH520470</p>	<p><b>1997 Freightliner Classic, 70' Condo, 12 7 500hp 13 Spd 933K w/Recent Overhaul &amp; Papers, 10 Alum Wheels, ALL CHROME, 40% Virgin Tires, 3 58 Rears</b> <b>\$27,900</b> VA804874</p>	<p><b>(2) 1996 ELF 125 Cutaway 14 Passenger busses, Ave 200K miles, Powerstroke Diesel, Allison Automatic, F350 Chassis, Low Floor ADA, White,</b> <b>\$5,000</b> THB60180</p>	<p><b>(2) 1999 Freightliner FLD 12064ST 70' Condo's, Cat 12-410hp 10 Speed, Air Ride Ave 570K Miles Gray Double Bunk, Alum Steers, AC, Jake Brake</b> <b>\$19,900 ea.</b> XL988131</p>
<p><b>1989 IHC 1754 22' Moving Truck, DT466 210 Hp 5 Speed 177K Origin 1 Miles Under CDL, Air Brakes White 2 Roadside &amp; 2 Curbside Doors</b> <b>\$6,900</b> KH614879</p>	<p><b>(3) 1998 Volvo VNL42T Single Axle Daycabs Cummins M11 370 Hp RTLO 10 Speed Air Ride Suspension &amp; Cab 24 5LP Tires Jake Brake Red Ave Miles 500K Very Clean!</b> <b>\$15,500</b> WN750485</p>	<p><b>1997 FTL D11264ST 70' Condo, Cummins M11 400hp 9 speed 600'sK miles 75R22 5 70% Virgin tires, Teal 3 07 rear Cruise Jake Brake</b> <b>\$16,500</b> VA551846</p>	<p><b>1996 IHC 9200 51' Pro Sleepers, Cummins M11 330E, 9 Speed, 1 Million Miles, Jake Brake 2 Alum Wheels Air Ride, White</b> <b>\$7,900</b> TC014804</p>	<p><b>1998 IHC 8100 24' Van Cummins M11 280hp 9 Speed 460K Miles White, 33,000 GVW, AC, Spring Suspension</b> <b>\$16,500</b> WH528227</p>
	<p><b>1999 4700LP 10' Dump, Diesel 190hp Allison Automatic 63K miles White AC Will Haul 6 1/2 Ton Payload Pintle Hitch</b> <b>\$26,500</b> XH675098</p>	<p><b>1993 Pete 377SB 63' Condo Cat 3406B 425 Hp 9 Speed 881K Miles Jake Brake Gauge Package Air Ride Air Slide 5th Virgin LP24 5 Tires/30%, Green</b> <b>\$9,750</b> PD333444</p>	<p><b>(2) 1999 Mack CH612 Single Axle Condo Sleepers E7 310 330 Hp, Mack Rears Air Ride Eaton 9 Speed Jake Brake Cruise 600K Miles Virgin Tires, Maroon</b> <b>\$18,900</b> XW015281</p>	<p><b>1999 Isuzu NPR 9' Dump, DSL 175hp, 5 speed, 84K miles White 14500 GVW Spring ride, ROOM FOR TOOL BOX!</b> <b>\$17,500</b> X7015656</p>

"Bid on our trucks at:" [www.truck-network.com](http://www.truck-network.com)

**IN STOCK AT BINKLEY & HURST BROS. INC.!**  
**A TRAILER THAT DOES IT ALL!**

**PEQUEA**  
Tradition in Progress

**Super Deals on New Gooseneck Trailers Instock Get One Now!**

**Deck Overs w/Flip Tail Hay Hauler Special**

Optional Slide In Ramps

**Skid Loader Models**

**82" Inside Fender Width**

**Deck Overs**

**BINKLEY & HURST BROS. INC.**

133 Rothsville Station Rd.  
P.O. Box 0395, Lititz, PA 17543-0395  
(717) 626-4705 1-800-414-4705 Fax (717) 626-0996