

350

TRUCKS / TRAILERS



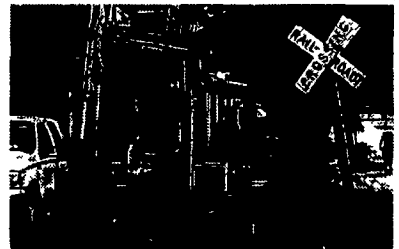
**1990 Dakota Trail-EZE Trailer Model LP30T48**, 45' with 3' Tail, 36"6". Lower Deck, 8'6" Upper Deck, Ground to Deck 35" Stk#200236, \$15,900



**Caterpillar V150, S/N: 13V01939, 15,000lb Forklift**, Perkins 4 Cylinder Diesel, Powershift Trans., EROPS, Tires 8.25-15, 48" Forks, Sideshaft Carriage, 218" Lift Height, Stk#600018, \$9,500



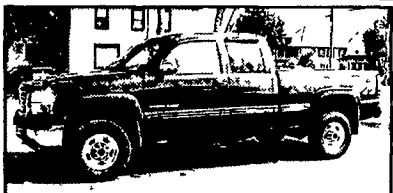
**1999 Ford F450 XLT**, 7.3 Liter Powerstroke, Auto, Spring Suspension, White, Crewcab XLT Super Duty, 9' Aluminum Flat Bed w/ Toolboxes on Both Sides & Hidden Fifth Wheel, Tow Package, Power Windows, Locks, Cruise Control, Air Condition, AM-FM Cassette, Power Seat, Remote Keyless Entry, Good Condition, Stk# 150339, \$16,900



**1994 Yanmar B6-2 Excavator**, Offset Boom, 37HP Engine, Weight 12,000 lbs, Stk# 350011



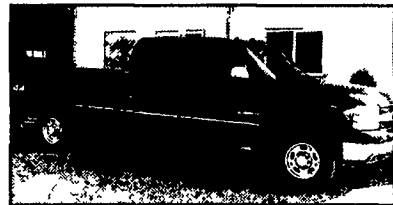
**Curry Supply Co.** 1-800-345-2829  
Curryville, PA 814-793-2829



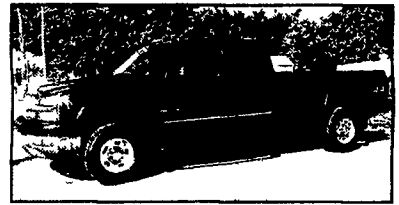
**2002 GMC 2500 HD SLE** Extended Cab. Short Bed, 6.0 Vortec, AT, A/C, PW, PDL, Cruise, Tilt, CD, Dual P Seats, P Mirrors, 9,200 GVW, 4 10 Ltd Slip Rear, 30,000 Mi \$24,900



**03 GMC 2500 HD, 4x4** 6.0 Vortec, AT, AC, tilt, 9200 GVW, 4 10 limited slip rear, tow pkg, 9,000 miles, pewter \$21,700



**02 Chev. 2500 HD LS** Crew cab, 4x4 Longbed, 8.1 Vortec, Allison AT, AC, PW, PDL, Cruise, Tilt, CD, Dual power seats, pmirrors, 9,200 GVW, 4 10 ltd slip rear, 55,000 mi, black \$24,500



**03 Chev. 2500 HD LS** Extended cab, 4x4, Longbed, 6.6 Duramax Diesel, Allison AT, AC, PW, PDL, cruise, tilt, cass/cd, pseat, pmirrors, 9,200 GVW, 3 73 Ltd slip rear, 14,000 mi, blue \$32,900

**MARTIN'S AUTO SALES**

1025 W. Main St., New Holland, PA 17557

(717) 656-6621



**99 UD 1800 HD w/16Ft. Reefer Body**, 6.9 Litre Turbo Diesel (225 HP), 6 Sp., 18,000 GVWR, Carrier Tempro 4405 Reefer Unit Rollup Rear Door, 51,000 Mi. #4614



**2001 Mitsubishi FM-SP** w/26' Grumman Reefer Body & Thermo King KD II SR, Elec Stand-by, Stainless Rear Frame, Roll Up Door and Curbside Door, 7.5 Turbo Dsl (230 HP), 6 Spd., 32,900 GVWR, Air Brakes, 45,000 Miles



**01 Mitsubishi Fuso FM617 w/26 Ft. Dry-Van**, 7.5 turbo Diesel (200 HP), 6 Sp., 26,000 GVWR Tuckaway Lift Gate, E-Track Translucent Ceiling 70,000 Miles #4597



**2001 Landoll 660** 48' x 102", Air Ride, 20,000# Winch, Wood Floor Fork Lift Package, Bulkhead Like New

**Four Way Auto Sales**

Rt. 23, New Holland, PA  
717-354-3199  
Toll Free 1-877-999-8267



**1974 Ford F600**  
12Ft. Dump with Alum. Grain Tailgate, Good Cond., 90,000 Miles  
**\$1,350 OBO**  
(610) 488-1606



**"Turn Trash To Cash"**  
**77 MACK Rolloff Tri axle, Model DM686SX**  
237 diesel, 5 spd., P/S, 50,000 lbs. Heil Rolloff, 10 Rx22 Tires, Camelback suspension, Double frame, 58,000 Lbs Rears. Runs Good. Need Some Tires  
**\$4,490**  
Call Ray at 856-424-6300

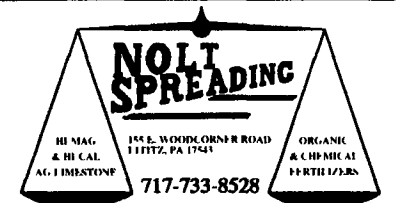
**KEYSTONE TARPS**

SERVICE & SALES

Is A Manufacturer Of Custom Tarps

- Systems
- Tarp Straps
- Storage Covers
- Load Straps
- Gloves
- Used Railroad Ties

1-800-798-TARP (8277)  
FAX 570-435-0036 570-435-0752



SALES, HAULING, SPREADING  
BLENDING, BULK, BAGGED



**FOR SALE 2 TRUCKS & 2 TRAILERS**  
**1984 MACK R 688**, with 10 foot alum dry lime spreader body, 350 Mack engine, 13 speed trans, 23,000 lb Mack rear 35,000 lb gvwr or 80,000 lb gvwr with trailer. \$14,500 with flotation tires or \$13,500 with regular tires  
**1973 FORD LT9000**, With 10 foot alum dry lime spreader body 8V92 detroit 400 hp engine. 13 speed trans, single axle rear 35,000 lb gvwr or 80,000 lb gvwr with trailer \$4,900  
**1978 HILL alum 3 axle airslide lime trailer**. \$9,500  
**1977 steel 3 axle airslide dry lime trailer**. extra large \$3,900

(610) 395-2482

(610) 395-2482

**KRESSLEY'S**  
AUTO & TRUCK SALES

COME IN AND DEAL

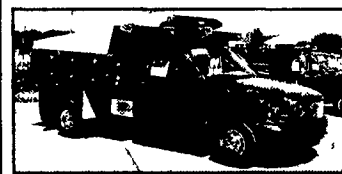
2 Miles North of Fogelsville on Route 100 in Claussville

Over 200 Used Cars & Trucks

SINCE 1945



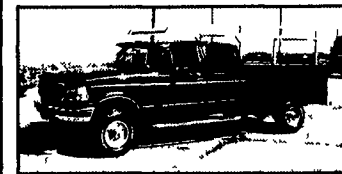
**1994 Ford F-350 XLT Crew Cab** Dually, 2WD 7.3 Diesel Auto Air Cass Super Clean



**2001 Ford F-350 XL Super Duty Dump Truck** DRW, 6.8 V-10, 5 Spd, Air 9 Ft Virginia Body, Super Clean, 18,000 Miles



**2000 Ford F-550 XLT Super Duty Box Truck** DRW, 7.3 Diesel, Auto, Air, 16 Ft Grumman, Walco Liftgate PA 1 Owner, 15,000 Miles



**1997 Ford F-350 XLT Crew Cab Utility** 4x4, 7.3 Diesel Auto Air Full Power 8 Ft Reading Body Real Nice Truck



**2002 Dodge 1500 Explorer High Top Conversion Van**, 5.2 V-8, Auto, F&R Air, Full Power TV/VCR Like New 14,000 Miles



**2000 Coachman E-350** 21 Ft Starflyte Motorhome, V-8 AT AC All Opts Generator Central Air Like New Only 10,000 Miles

Additional Inventory

- 2002 Ford Explorer XLT, 4 Door 4x4 4.0 V-8 Black
- 2002 Chevy Avalanche 4 door 4x4 5.3 V-8 Like new, 34,000 Miles
- 2002 Chevy Tahoe LT 4 Door 4x4 5.3 V-8 27,000 Miles Green
- 2002 Chevy Tahoe LS 4 Door 4x4 5.3 V-8 34,000 Miles Pewter
- 2002 Jeep Grand Cherokee Laredo 4x4 4.0 6 Cyl Like New All Opts
- 2002 GMC Yukon XL SLE 4 Dr 4x4 6.0 V-8 13,000 Miles Blue
- 2001 Chevy Suburban LT 4 Door 4x4 5.3 V-8 PA 1 Owner White
- 2001 Chevy Tahoe LT 4 Door 4x4 5.3 V-8 Like New 20,000 Miles
- 2000 GMC Yukon SLT, 4 Door 4x4 5.3 V-8 Super Nice
- 2000 Ford Expedition XLT, 4 Door 4x4 5.4 V-8 Black
- 2000 Chevy Blazer LS, 4 Door, 4x4, 4.3 V-6, Blue, 33,000 Miles
- 2000 Jeep Grand Cherokee Laredo 4x4, 4.7 V-8, 21,000 Miles, Red
- 2000 Jeep Grand Cherokee Laredo 4x4, 4.0 6 Cyl 35,000 Miles, Blue
- 1999 Chevy Suburban 2500 LS, 4 Door, 4x4, 7.4 V-8 Pewter
- 1999 Chevy Tahoe, 2 Dr Sport 4x4, 5.7 Liter V-8 Real Nice, Blue
- 1999 Ford Explorer Eddie Bauer, 4 Dr 4x4 5.0 V-8, PA 1 Owner White/Gold
- 1998 Chevy Tahoe LT 4 Door 4x4 5.7 V-8, Green, 73,000 Miles
- 1998 Ford Expedition XLT 4 Door 4x4 4.6 V-8 68,000 Miles Maroon
- 1998 Ford Explorer XLT 4 Dr 4x4 4.0 V-6 PA 1 Owner, Gold
- 1998 Lincoln Navigator 4 Dr 4x4 5.4 V-8 Full Power Gold
- 1996 Ford Explorer XLT 4 Dr 4x4 4.0 V-6 Super Nice, Green
- 1993 Ford Explorer XLT 4 Dr 4x4 4.0 V-6 Real Nice, Blue
- 1990 GMC 1500 SLE Suburban 4x4 5.7 V-8 Super Clean Only 78,000 miles



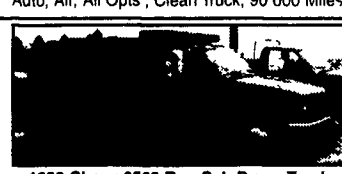
**2001 Dodge Ram 3500 SLT Quad Cab** Dually 4x4, 5.9 Diesel, Auto, Air Cass/CD All Opts Super Nice 54,000 Miles



**1998 Chevy 2500 Cheyenne Utility** 4x4, 5.7 V-8 Auto, Air, 8 Ft Reading Body Super Clean



**1995 Ford F-350 XLT Reg Cab** 4x4, 7.5 V-8 Auto, Air, All Opts, Clean Truck, 90,000 Miles



**1999 Chevy 3500 Reg Cab Dump Truck** DRW, 6.5 Turbo Diesel, Auto, Air 8 Ft Heil Body, Super Clean, Only 26,000 Miles PA 1 Owner



**2000 International 4700 19 Ft Rollback** T444E Diesel 7 Spd Air Vulcan Steel Body Hydraulic Wheel Lift 22,000 Miles



**1995 Chevy Ext Cab Regency Conversion** 4x4, 5.7 V-8 Auto Air All Opts Leather Int Only 34,000 Miles