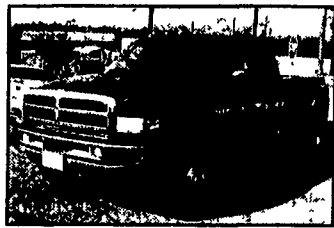


350 TRUCKS / TRAILERS

**Diesel Owners!
Get HP & Fuel Mileage**



We Have Performance Chips For The Following:

- Dodge Cummins 40-120 HP + 175 Ft. lbs. More Torque
- Chevy Duramax 70-210 more HP up to over 400 lbs. of Torque
- Ford Powerstroke 60 - 80 - 120 add more HP up to 200 lbs. of Torque
- VW TD 35 more HP add up to 35 + 45 lbs. of Torque

Free Installation 2003 Performance Chips & Exhaust are here & in stock

We carry complete line 4" exhaust systems for \$550
*Torque Converters *Valve Bodies *Exhaust Brakes *Gauges *K&N Air Filters

You Get More Horsepower & Torque
We Carry The Best Stuff For Your Truck
Propane For Diesel - Nitrus For Diesel

(717) 249-2255 *Call Now!!! Ask for Shawn*

LIBERATOR PERFORMANCE

1970 Spring Road, Carlisle, PA 17013

Sales, Service & Inspection



84 Mack R-Model Newway-alum whls, Holland slider, air, PTO incab 2line, 30' alum frameless trlr Both for \$11,800 obo 717-235-2941

1984 Mack Model DM68SS

Torsion axle, 21" steel flat dump, 237 Mack engine (225 hp), 6 sp trans. P/S, full air brakes 44,000 lb. Mack rear on Camal back suspension. Double frame. 11R22.5 tires on cast spale wheels. Excellent work truck.

Camden Truck
856-456-4030 215-925-0322

\$7,900

20 ft. Silage Body w/6ft deep sides, hyd tailgate, good cond.,
717-263-2000
814-793-3032

SmithCo low boy, NGB, 40 Ton, Pin on Third, Frame Rails & Cross Members. Rebuilt by Hale. **\$12,000/obo;**
V Plow w/97" Wings Good for Big Tractor or Loader, Must Sell
717/629-6475

HUFFMAN TRAILER SALES FEATHERLITE TRAILERS
FRIENDLY, PROFESSIONAL SERVICE
Specializing in Quality Built Trailers and Used Trucks
Lots Of Good Used Trailers In Stock

Model 8120

- Solid sides up 54 1/2" to top air spaces • All aluminum construction • Available in 16', 18', 20', 24' and 30' lengths
- 7' and 8' width, minimal inside fender wells
- 5' nose standard • Full swing rear endgate with half slide
- Full swing center gate with slider

Rt. 11 NORTH, NEAR EXIT 251 • HARRISONBURG, VA 22802
Visit Our Website: huffmantrailers.com
OFFICE: 540-434-3530
OR 800-825-2545

Featherlite - Hudson - Titan - Pace American - Apache Cattle Feeders

Lebanon Valley TRAILER SALES
699 West Lincoln Ave., Myerstown, PA 17067

877-866-1610
Located along Rt. 422 between Lebanon & Myerstown, PA
Authorized Dealer for Belmont, Mid Atlantic, CAM Superline & Zook Trailers

14' To 20' 10,000 to 12,000 lb. GVWR Equipment Haulers, Belmont & Zook Call for Special Pricing

14' to 24' Deckovers & Goosenecks, 3,000 to 16,000 lb. GVWR Belmont & Zook

Custom Built Trailers Available

- Trailer Parts, Tires, Wheels & Accessories •
- Hitch Installation & Repair •

We also Specialize in Landscapers, Car Haulers & Dumps of all sizes.

WM. COHEN & SONS, INC.
"THE TRUCK PARTS STORE"
HEAVY DUTY TRUCK PARTS - NEW & USED - REBUILT REARS & TRANSMISSIONS
610-269-1298 Fax 610-269-0787 www.cohentruckparts.com

1990 GMC 7000 DT-506
Detroit 8.2 Diesel, 5 Speed, 2 Speed Rear, 7,000 Lbs., 19,000 Lbs. Rear, Hydraulic Brakes, Salt Spreader, 12 Ft. Angle Plow

New Flatbeds Available
Sizes currently available are 12', 14', 20', 22' and 24' Racks are also available

2000 GMC SIERRA SL
4300 V6, 5 Speed, 79,000 miles, 4x4, 8 ft bed with liner, cloth interior, A/C, AM/FM \$13,500

Michigan Loader Model L30
Quick Coupler, Comes With 1 Yard Bucket and 60" Forks, Runs Excellent

Aluminum Tanker/Trailers
7500 gal and up

1972 Ford F-800 Tanker
391 V8 Gas, Auto, 86,371 miles, 4 Wheel drive, air brakes, power steering, 2000 gallon tank, Single Rear, 27,500 GVW \$6,500

Kalmar Forklift, Propane Powered,
4435 lb capacity, 42" forks, 192" lift, cushion tires, 2194 hours

1989 GMC Kodiak, 3208T Cat Engine
5 Speed, 2 Speed, 4 Door Cab, P/S, 167" wheel base, 35,000 lb GVW 108,614 miles, 10x20 tires, hydraulic brakes, ball hitch setup for gooseneck trailer

HOSTETLER Truck Bodies & Trailers
717-667-3921
Milroy Exit off Rt. 322
Between Lewistown & State College

Pace American Enclosed Trailers

- Journey 5'x8'**, Single Axle, Rear Door, 5' High, 2990# GVW
- Journey 5'x10'**, Stone Guard, Single Axle, 5'6" High, 2990# GVW
- Journey 6'x10'**, Stone Guard, Single Axle, Side Door, 6' High
- Journey 6'x12'**, Ramp Door, Side Door, Stone Guard, 6' High
- Journey 7'x16'**, 7000# GVW, Side Door, Double Rear, 6'6" High
- Cargo Sport 6'x12'** Single Axle, Ramp Door, Side Door
- Cargo Sport 8'x16'** Tandem Axle, Double Rear, Side Door

Skid Loader Trailers
Now Available in Kubota Orange

- 16' Loader**, 9950# GVW, Torsion Axles, Ramps, 82" Wide
- 18' Loader**, 9950# GVW, Torsion Axles, Ramps, 82" Wide
- 18" Loader**, 9950# GVW, Ramp Gate, Torsion Axles
- 19' Tilt**, 9950# GVW, Hydraulic Tilt, 82" Wide

Deckover Equipment Trailers

- 18'+4'** Bumper Pull, Dovetail & Ramps, 9950# GVW
- 18'+4'** Gooseneck, Dovetail & Ramps, 9950# GVW

Moritz Dump Trailers

- 6'x10'** Deckover Dump, 7000# GVW, Dump Thru Gate
- 6'x10'** Low Profile, 10,000# GVW, Ramps, Double Doors
- 6'8"x12'** Low Profile, 12,000# GVW, Ramps, Double Doors
- 8'x14'** Gooseneck Grain Dump, 14,000# GVW, 36" High Sides

Eby Aluminum Trailers

- LS 6'x16'** Bumper Pull, Torsion Axles, 10,000# GVW
- LS 6'x16'** Bumper Pull, 7' High, 10,000# GVW, Torsion Axles
- LS 6'8"x16'** Gooseneck, 10,000# GVW, Torsion Axles
- Maverick 6'8"x20'** Gooseneck, 14,000# GVW, 7' High

Aluminum Truck Bodies

- Cadet 8'x84"** Aluminum Pick Up Platforms, Bulkhead, Rear Skirt with Lights, Gooseneck Door
- Eby 9'x94"** Aluminum Platform, Bulkhead, Gooseneck Compartment, Heavy Duty Bed
- 9' Dump Body**, 20" Sides, 30" Gate, 1/4 Cab Protector
- 16' Grain Body**, 48" High Sides, Double Acting Tailgate, Grain Chute