

**1989 Ford F350-4WD**  
5 spd. 460 engine, body completely done over, 8 ft. Western plow included.  
**Asking \$9,500 OBO (570) 427-0167**

1999 Chevy Cheyenne K2500, 4x4, 350 auto, PS, PB, cruise, tilt, air, AM-Fm CD, 45,000 miles, dark blue, \$14,900. 717-733-2873

1979 Ford C 600 ft 16 ft stake body dump, 111K mi, 4 spd w/2 spd rear, decent cond, nds brake work, taken off rd May 03, not renewing regist, 6 new 900 20 tires \$1500 610-644-2300

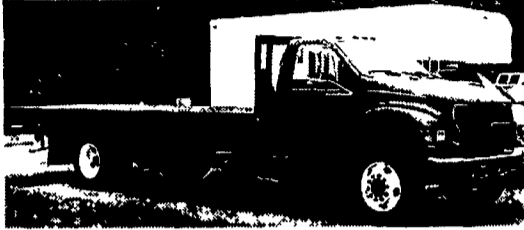
1981 Ford F350 w/12' stake body dump, 156K mi, 4 spd, decent mechanical shape, taken off rd May 03, not renew req \$850 610-644-2300.

**FOR SALE**

**1998 FORD RANGER**  
5-Spd., 20,000 miles  
**\$7,800 O.B.O.**  
**Call 717-933-4114**

**1997 F350 XLT**  
Crew cab, power stroke diesel, 4x4, PW, PDL, AC, cruise control, tilt wheel, towing package, bedliner, rollup tarp, 115,000 miles, ex cond \$17,900  
**570-943-2499 • 570-943-2137**  
Orwigsburg, PA

**FOR SALE**



**2000 FORD F650 XLT 22 ft. FLATBED**  
20HP Diesel, 6-speed, A/C, 26,000 GVW, Dk. Green, 117,000 Miles, Nice Condition  
**\$19,995**  
**Call 717-336-3130**

**Silage & Grain Body**

**1989 Ford LN9000**  
L10 (300 Hp) Cummins, AB, PS, 9 Sp Low-Hole, 16 Front, 40 Rear, 56 GVW Hendrickson Walking Beam, Double Framed VERY GOOD CONDITION! w/NEW SCOTT 23 Ft Silage, 3000 Hoist, Air Controls, Hydraulic Gate, 7 Gauge Floor, Cab Shield, Air Tailgate Latch (Flush Mount)  
**\$29,500**

**1989 Mack RD690**  
300 Mack w/Brake, 9 Spd., AB, PS, 58,400 GVW, Aluminum Dump Body, Central Hydraulics, Plow & Spreader Available GOOD CONDITION!  
**\$23,500 (Truck Only)**  
'88 IH w/Cummins (Same Specs As Above)

**Other Units Available**  
**Sunny Acre Sales**  
R.D #2 Box 266, Tyrone, PA 16686  
**814/742-8202 814/742-7303**

**BRUBAKER'S AUTO SALES**  
PH. 717-866-5237  
Hours: Mon.-Fri. 8 a.m. - 9 p.m.; Sat. 8 a.m. - 6 p.m.  
ROUTE 422 MYERSTOWN, PA

<p><b>99 FORD F-250 LARIAT 4x4 QUAD CAB</b>, Tan, 6 8 V10, AT, AM/FM/Cass., AC, PW, PL, CC, Tilt, Pwr -Seat, Leather, Keyless-Entry, 8800/GVWR, 64,180 Mi. .... <b>\$17,900</b></p>	<p><b>98 DODGE DURANGO SLT</b>, 4x4, 7/Pass., White, 5.2 V8, AT, PW, PL, CC, Tilt, Dual-AC, Pwr. Seat, Leather, AM/FM/CAS/CD, Keyless-Entry, 56,595 Mi. .... <b>\$13,900</b></p>	<p><b>03 CHEVY VENTURE LS EXT</b>, 7 Pass., Black, 3400 V6, AT, PW, PL, CC, Tilt, Dual-AC AM/FM/CD, Keyless Entry, 24,215 Mi. .... <b>\$16,900</b></p>	<p><b>01 PONTIAC AZTEK GT, 2WD</b>, Blue, 3400 V6, AT, AC, PW, PL, CC, AM/FM/Cass/CD, HUD, Pwr. Seats, Leather, Keyless Entry, 57,065 Mi. .... <b>\$10,900</b></p>
<p><b>00 CHEVY ASTRO LT, 8/Pass.</b>, White/Gray, 4.3 V6, AT, PW, PL, CC, Tilt, Dual-AC &amp; Heat, AM/FM/Cass/CD, Pwr Seats, Keyless, 74,385 Mi. .... <b>\$9,900</b></p>	<p><b>00 CHRYSLER TOWN &amp; COUNTRY LX</b>, Quad Seats, Silver, 3 3, V6, AT, PW, PL, CC, Tilt, Dual-AC, Pwr Seat, AM/FM/CASS/CD, Keyless-Entry, 44,630 Mi. .... <b>\$12,900</b></p>	<p><b>00 OLDS BRAVADA SMART-TRAK</b>, White, 4 3 V6, AT, AC, PW, PL, CC, Tilt, Pwr Seats, Leather, AM/FM/Cass /CD, Keyless Entry, 60,666 Mi. .... <b>\$10,900</b></p>	<p><b>00 FORD EXPLORER SPORT</b>, 4x4, Black, 4.0 V6, AT, AC, PW, PL, CC, Tilt, Pwr Seat, AM/FM/CD, Keyless Entry, 49,520 Mi. .... <b>\$11,900</b></p>

**USED TRUCKS**

<p><b>2000 DODGE 3500 8FT. CONTRACTOR DUMP</b> Cummins Diesel, AT, A/C, PS, PB, 2x4, Red, 31K Miles <b>\$23,500</b></p>	<p><b>1996 CHEV. 3500 10FT. CONTRACTOR DUMP</b> 6 5 Diesel, 4x4, AT, A/C, PS, White &amp; Green, 42K Miles. <b>\$18,900</b></p>
<p><b>2001 DODGE 2500 4x4 QUAD CAB SLT</b> Laramie, 8ft Bed, Cummins Turbo Diesel, AT, A/C, Most Options, 119K Miles <b>\$21,500</b></p>	<p><b>2000 DODGE 3500 LARAMIE SLT 4x4 Quad Cab</b>, Cummins Turbo Diesel, AT, A/C, Most Options, 93K Miles, Blue <b>\$23,500</b></p>
<p><b>1999 DODGE RAM 2500 QUAD CAB SPORT</b>, Short Bed, 4x4, Cummins Turbo Diesel, AT, A/C, Most Options, 94K Miles, Dk Green <b>\$18,900</b></p>	<p><b>1999 DODGE RAM 2500 SPORT 4x4 QUAD CAB, SHORT BED</b>, Cummins Turbo Diesel, AT, A/C, Leather Most Options, 94K Miles Black <b>\$17,900</b></p>
<p><b>1998 DODGE RAM 2500 4x4, Club Cab</b>, 12 Valve Diesel AT A/C C 93K Miles, Red <b>\$17,900</b></p>	<p><b>1997 DODGE RAM 2500 CLUB CAB, 4x4, V-10</b> Laramie SLT Leather AT A/C Most Options Black 108K Miles <b>\$12,900</b></p>
<p><b>1997 CHRYSLER TOWN &amp; COUNTRY MINI-VAN</b>, 3 8 6 Cyl, 1x4 AT Dual A/C Most Options 130K Miles Green <b>\$7,550</b></p>	<p><b>1988 FORD F350 w/8 ft Mason Dump body</b> 460 V8 5-Spd PS PB A/C Red 74K Miles <b>\$10,900</b></p>

**SCHAEFFERSTOWN AUTO & TRUCK SALES**  
RT. 501, 1-1/2 miles South of Schaefferstown  
**717-949-2812**

**WILLIAM H. WESSELS USED CARS**  
811 Route 15 Dillsburg, PA  
**1-800-440-4433 1-717-432-2918**  
Notary Public Temporary Tags

<p><b>2000 DODGE RAM 2500</b> Quad Cab, 4x4, 360 V-8, Auto, AC, Plow w/Spreader, Short Bed, 3000 Mi. <b>\$25,900</b></p>	<p><b>2001 CHEVY L1500 EX CAB</b> V-8, Auto, AC, 23,460 Miles <b>\$14,900</b></p>	<p><b>1993 FORD F150, 4x4, 6 Cyl.</b> 5 Speed, AC, 120,000 Miles <b>\$4,990</b></p>	<p><b>1999 CHEVY S-10 EXT. CAB</b> 4 Cyl, 5 Speed, AC, 24,500 Miles <b>\$8,990</b></p>	<p><b>2001 DODGE RAM 1500 QUAD CAB</b> 4x4, V-8, Auto, AC, Leather, 26,000 Miles <b>\$19,900</b></p>	<p><b>2000 NISSAN XTERRA 4x4, V6</b>, Auto, AC, Nicely Equipped, Red, 22,000 Miles <b>\$18,900</b></p>	<p><b>2000 CHEVY K2500 EXT CAB 4X4</b> 350 V-8, Auto, AC, Short Bed, 100,206 Miles <b>\$12,900</b></p>	<p><b>2003 CHEVY ASTRO CARGO</b>, AWD, V-6, Auto, AC, Only 2,700 Miles <b>\$16,900</b></p>
<p><b>2000 DODGE RAM 2500</b> Quad Cab, 4x4, 360 V-8, Auto, AC, Plow w/Spreader, Short Bed, Only 1,500 Miles <b>\$25,900</b></p>	<p><b>99 DODGE DAKOTA CLUB CAB</b> 4x4, V-8, Auto., AC, 35,000 Miles <b>\$16,900</b></p>	<p><b>2000 DODGE RAM 1500 QUAD CAB</b> V-8, Auto, AC, 35,820 Miles <b>\$16,900</b></p>	<p><b>2002 FORD T-BIRD HARDTOP CONVERTIBLE</b>, V8, Auto, AC, Leather, 13,000 Miles <b>\$29,900</b></p>				
<p><b>1996 FORD F150 XCAB, V8, Auto</b>, AC, 117,000 Miles <b>\$4,990</b></p>	<p><b>2000 DODGE DURANGO SPORT 4x4</b> V-8, Auto, AC, 3rd Seat, 23,000 Miles <b>\$16,900</b></p>	<p><b>1991 FORD F450 BUCKET TRUCK</b> 5 Speed, Diesel, PS, PB, 86,000 Miles <b>\$7,990</b></p>	<p><b>2000 TOYOTA SIENNA CE</b> 6 Cyl, Auto, Dual AC, 39,000 Miles <b>\$16,900</b></p>				
<p><b>2000 CHEVY SUBURBAN LT</b>, V-8, Auto, Dual AC, Leather, 39,250 Miles <b>\$25,900</b></p>	<p><b>2000 CHEVY S10 BLAZER, V-6</b>, Auto, AC, 32,000 Miles <b>\$14,900</b></p>	<p><b>1999 DODGE RAM 1500</b> Cargo Van, V-8, Auto, AC, 79,000 Miles <b>\$7,990</b></p>	<p><b>2002 FORD F250</b> Quad Cab, 4x4 V8, 5 Speed, AC 22,000 Miles <b>\$21,900</b></p>				