

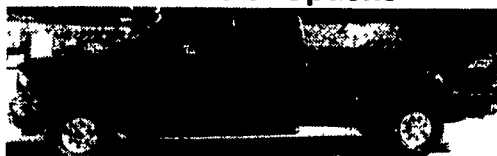


'69 F600 dump truck, 8ft. bed, 21,000 GVW, 330, V8, 4 speed stick, 2 speed rear, good roofing or concrete truck.....\$2,500 obo
'69 F600 dump truck, 10ft. landscaper bed, 18,000 GVW, 4 speed stick, 330, V8, needs work.....\$500 obo



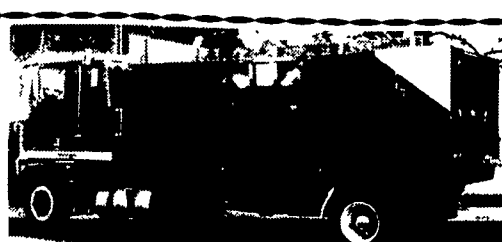
'97 MGS 16ft. tandem axle, 10,000 lb.....\$2,000
Call Wayne 717-367-1947

2001 Ford F250 Power Stroke Diesel 7.3 with Tow Package and Lots of Options



Crew Cab Long Bed with H.D. Unigoose gooseneck trailer hitch frame mounted, also bumper ball hitch, bed liner with rubber mat & tarp kit, 33600 miles with extended warranty, bright island blue
\$29,800 or Best Offer
Excellent Condition, Dealer Serviced,
Call 717-821-3629 or 717-866-0236
Ready To Work

BINKLEY-HURST BROS. INC.
133 Rothsville Station Rd.
P.O. Box 0395, Lititz, PA 17543-0395
(717) 626-4705 1-800-414-4705 Fax (717) 626-0996

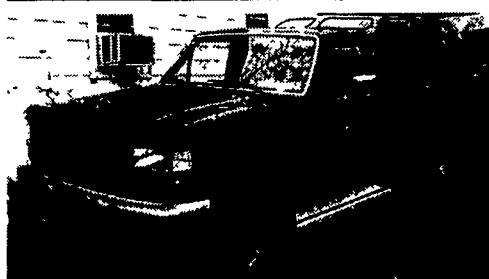


1989 Ford CL9000, 18' Scott Ensilage body \$18,500 717-838-8540

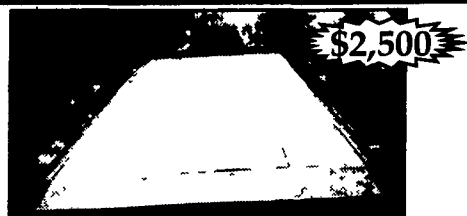
FOR SALE



1989 DODGE H.D. 3/4 TON
4x4, Cummins Diesel, AT, PS, PB, w/Gooseneck and Bumper Hitches.
With or Without Trailer



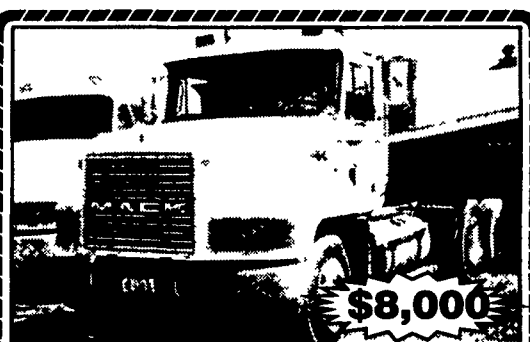
1995 FORD F150 4x4
AT, 6 Cyl., Only 52,000 Miles, New Cap., Very Clean
Call 717-926-0297



1998 Tru Haul 19' Tilt Equipment Trailer, 12,680 GVWR Good Shape.
No more ramps to mess with, excellent for hauling towmotors, farm machinery, small dozer etc.
Winch available (717) 597-5473



83 Ford L9000 Cummins 9 speed wet line 24' steel dump trailer. 610/562-4807



93 CH MACK DAY CAB, 350 Engine, Airride, 10 Speed, Eaton Rears, Bud Wheels, Clean. 570/465-3589



1978 International Paystar 5000 tri-axle log truck w/1982 Prentice 120 loader, 556,000 miles, many componets rebuilt, 350 Cummins Big Cam, 150,000 mi on engine major, Rockwell Rears, Hendrickson rubber block suspension, 13 speed trans., Pintle hook, nice truck. 717/436-8376 or 717/994-2223



CHEVY K1500 SILVERADO EXT CAB 4x4
5.7, Black, AC, PW, PL, 129k mi. • \$7,800
717-626-4928 • Cell: 717-371-6614

Selling Trucks Surplus To Our Current Needs!



1988 Mack Mid Liner MS200P 25,000# GVW, 16' Box w/2,500# Capacity Lift Gate Gate Is 94" Wide x 71" Long, Door Opening Is 71" High On Box, Painted, Current Inspection Good Tires \$6,000 OBO



1988 C70 Chev Dump Truck, Gallion body 350 ci 30,000# GVW, 5 Spd w/2 Spd Rear, Good Tires, 70,000 Mi New Paint Clean Truck, Current Inspection \$9,500 OBO

Tom @ Tilley's Nursery Inc 610/282-4784 Day
111 E. Fairmount St., Coopersburg, PA 18036
Lehigh County

350 TRUCKS / TRAILERS

'91 Chevy Silverado Suburban 2500, 2wd, 350 auto, PS, PB, PW, PDL, cruise, tilt, air, 8 pass, 410 ratio, towing package, 82,000 mi., ex. cond., \$5,900. 717-733-2873

'99 Dodge SLT 1500 4x4, 360 auto, PS, PB, PW, PDL, cruise, tilt, air, 72,000 mi., new radials, \$11,900. 717-733-2873

'98 Chevy Cheyenne 3500, 2wd, 6.5 turbo diesel, auto, PS, PB, air, Am-Fm, 9,000 GVW, 48,000 mi, dark blue, \$10,500. 717-733-2873

'99 Chevy LS 3500 single whl, 4x4, 350 auto, PS, PB, PW, PDL, cruise, tilt, air, towing pkg., new radials, 78,000 mi, blue & silver, \$13,900. 717-733-2873

'97 Chevy Cheyenne 2500, ext. cab, 2wd, 350 auto, PS, PB, cruise, tilt, air, Am-Fm cass, towing package, 8,600 GVW, 63,000 one owner miles, \$9,950. 717-733-2873

'95 Dodge SLT 2500 ext cab, 2wd, V10, 5 spd, PS, PB, PW, PDL, cruise, tilt, air, 8,800 GVW, 410 ratio, limited slip diff, 36,000 one owner mi, ex. condition, dark green, \$10,500. 717-733-2873

'95 Chevy Silverado 1500, 4x4 Suburban, 350 auto, PS, PB, PW, PDL, cruise, tilt, dual air, barn doors, 82,000 miles, excellent condition, \$11,995 717-733-2873

'00 Chevy Silverado 1500, 4x4 Suburban, 5.3 auto, PS, PB, air, Am/Fm cass, vinyl seats, rubber mat, pewter, 61,000 one owner mi, ex. condition, \$17,900. 717-733-2873

40' flatbed trailer, \$1,600;
80 Dodge pick-up, 360V8, 4spd, 4x4, club cab, mechanically OK, has some rust, \$800, 717-475-4550

966 Int'l orig paint, sharp, exc cond, 3200 orig hrs, w/new 595 Allied quick attach loader, \$10,750, Brookside Farms (518)966-4754

1953 F W D 2Ton truck 4x4, 19,000 orig miles, \$750 (570)253-1794

'01 Chevy Silverado 2500, HD, 3/4 ton, 4x4, crew cab, long bed, 6.0, 5 spd, PS, PB, air, 9,200 GVW, 410 ratio, limited slip diff, 41,000 one owner miles, new radials, pewter, ex. cond, \$22,500 717-733-2873

'86 GMC Brigadier, single axle, C&C, 240 Cummins, 7spd, 11R24 5 rubber, (2) 100 gal fuel tanks, PTO, needs eng work, fix or parts, \$1800 obo. (717)367-0338

1977 Summit 26' alum dump trailer, very good condition, \$7,500 1973 Parker 26' alum dump trailer, fair condition, \$2,800 973-534-5239

'91 GMC Rally STX 3500, 15 pass, 454 auto, PS, PB, PW, PDL, cruise, tilt, dual air, 128,000 mi., \$3,975 717-733-2873

'00 Chevy Silverado LS 2500, 4dr, ext cab, 2wd, 6.0 auto, PS, PB, PW, PDL, cruise, tilt, air, 8,600 GVW, 373 ratio, limited slip diff, tow package, 92,000 one owner mi, pewter, ex condition, \$12,500 717-733-2873

THE HONDRU EXPERIENCE

OVER 200 TRUCKS AVAILABLE FROM OUR 4 DEALERSHIPS

E-TOWN DODGE

Route 230 E-Town • 717-367-6644
877-924-6644

2001 FORD F350 CREW CAB 4x4

Dually, Powerstroke Diesel, Auto, AC, PW&L, Leather, DVD Player, 27,000 Miles



COME SEE THE ALL NEW DODGE SPRINTER VANS & WAGONS AT E-TOWN DODGE.

10 PASS. WGNS. SUPER HIGH VANS 6'3" INSIDE



E-TOWN CHEVROLET

Oldsmobile Pontiac
Route 230 E-Town • 717-361-7776
877-924-6644

2003 DODGE RAM

Quad Cab, 4x4, Long Box, V-8, Auto, AC, 11,000 Miles



- 2003 CHEVY 1500 CREW CAB 4x4, 12,000 Miles, V-8, Auto, AC, PW&L, PS, PB, CD
- 2003 JEEP LIBERTY SPORT 4X4 - V6, 5-Spd, All Power Equip
- 2001 DODGE RAM 1500 - Quad Cab, 4x4, Auto, V-8 3 to Choose
- 2002 CHEVY TRAIL BLAZER LS, 6 Cyl., Auto, Equipped, 25,000 Miles 2 In Stock
- 2002 JEEP GRAND CHEROKEE, 4x4, 6 Cyl., Auto, 15,000 Miles

All prices Include Rebates, Exclude Tax, Tag and \$55 Doc Fee

LOADS OF USED PICKUPS CALL ANY STORE FOR DETAILS

Visit us @ www.hondruauto.com

OVER 10 CHASSIS IMMEDIATELY AVAILABLE FOR BODY INSTALLATION AT OUR LOCAL BODY COMPANIES!

PHILLIPS FORD

Route 72 Manheim • 717-665-3551
877-597-3551

1991 FORD F-350

4x2 w/Dump Bed & Tool Box, Auto, V-8

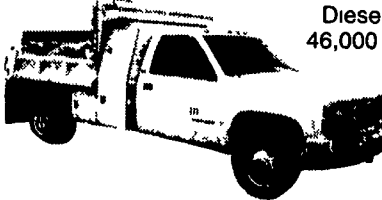
\$7,995



1995 GMC 3500 4X4

Diesel, Auto, AC, 46,000 Miles, Dump 3F1068A

\$17,995 \$16,995



MANHEIM CHRYSLER GMC

Route 72 Manheim • 717-665-2473
877-603-2473

2003 DODGE RAM QUAD CAB

4X4, SLT, V-8, Auto



2001 GMC YUKON SLT

V-8, Auto

