

(Continued from Page A12)

7.50-8.50 petite 13.50 40 lb ctns bagged IM-PORT 10.50 -FRUITS OTHER: ctns 1 lyr CA Apple Pears Shinko 15s 14.00 FL Carambola -Star Fruit 20s 17.00-18.00 25s 17.00-18.00 30s 17.00-18.00 GA Apple Pears Hosui 16s 10.00-13.00 18s 10.00-13.00 flts 1 lyr CA Figs Brown Turkey 34s 7.00-8.00 40s 7.00-8.00 ctns MX Cactus Pears Red 20.00 White 18.00 ctns 12 1-pt bkts CA Figs Black Mission 13.00-14.00 2 kg (4.4 lb) IS Lychee Nuts 10.00-12.00 -GRAPES: MARKET ABOUT STEADY. 19 lb lugs bgd CA U.S. One Thompson Seedless exlg 20.00 lge 16.00 med 12.00-13.00 mostly 12.00 some 10.00 Ruby Seedless med 13.00-14.00 Red Seedless med fair cond 10.00 Black Seedless med 12.00-13.00 Italia med fair cond 9.00-10.00 Red Globe lge 14.00-16.00 mostly 15.00-16.00 med 12.00-14.00 some 10.00-11.00 Crimson Seedless exlg 20.00-21.00 lge 19.00-19.50 med-lge 18.00-18.50 mostly 18.00 med 16.00-17.00 fair qual 14.00 18 lb lugs wrpd CA U.S. One Thompson Seedless exlg 24.00 Crimson Seedless exlg one label 24.00 cartons 12 1-pint containers CA U.S. One Black Corinth med ord cond 8.00 5 kg ctns IT Victoria lge 20.00 -KIWI-FRUIT: MARKET STEADY. flts 1 lyr NZ Hayward 36s 9.00 ctns 3 lyr NZ Yellow Flesh 108s fair cond 12.00 -MANGOES: MARKET LOWER. flts 1 lyr BR Tommy Atkins 7s 7.50-8.00 8s 7.50-8.00 9s 7.50-8.50 mostly 7.50-8.00 10s 8.00 few 7.50 -NECTARINES: MARKET STEADY. 25 lb ctns lse CA California Well Matured Various Yellow Flesh Varieties 48 sz 11.00-12.00 56 sz 11.00-12.00 Various White Flesh Varieties 40 series fair cond 8.00 Arctic Snow 48 sz 14.00 56 sz 12.00-13.00 August Red 56 sz 11.00-12.00 September Red 56 sz 11.00-12.00 1/2 buctns lse PA Various Yellow Flesh Varieties 2 1/2 up 8.00 -PAPAYA: MARKET STEADY. 40 lb ctns DR Green Cooking Type 15.00 FL Green Cooking Type 15.00 4 kg containers BR Golden 9s 10.00 10s 10.00 30-35 lb ctns MX Maradol few 20.00-21.00 -PEACHES: MARKET ABOUT STEADY. ctns 2 lyr trypk CA California Well Matured Various White Flesh Varieties 42s 11.00 1/2 buctns NJ No Grade Marks Various Yellow Flesh Varieties 3 up 13.00-14.00 fair qual 10.00 2 1/4 up 12.00-13.00 mostly 12.00 fair appearance 8.00-9.00 2 1/2 up 10.00-11.00 mostly 10.00 Various White Flesh Varieties 2 1/2 up 16.00 25 lb ctns lse CA California Well Matured O'Henry 48 sz fair cond 6.00-7.00 few 5.00 Zee Lady 48 sz fair cond 6.00-7.00 few 5.00 -PEARS. MARKET ABOUT STEADY. 4/5 buctns wrpd CA U.S. One Bartlett 70s 27.00 80s 27.00 90s 25.00-26.00 100s 23.00-24.00 110s 21.00 Bosc

70s Gold 33.00-34.00 80s Gold 33.00-34.00 90s Gold 33.00-34.00 WA U.S. One Bartlett 80s 24.50 90s 24.50 100s 21.50 D'Anjou 70s 26.50 80s 26.50 90s 26.50 100s 24.50 110s 22.50 40 lb ctns CA U.S. One Bartlett 70s 22.00 80s 21.00 90s 21.00-22.00 100s 20.00 -PINEAPPLES: MARKET SLIGHTLY LOWER. ctns 1 lyr CR golden ripe 5s 16.00-17.00 6s 16.00-18.00 7s 15.00-17.00 8s 15.00-16.00 ctns 2 lyr CR 12s 15.00 -PLANTAINS: MARKET STEADY 50 lb ctns CB Green 13.00 few 12.00 EC Green 13.00 -PLUMS: MARKET ABOUT STEADY. 28 lb ctns lse CA California Well Matured Angeleno 30 sz 20.00 35 sz 15.00-16.00 40 sz 12.00-16.00 Betty Anne 20 sz 19.00-20.00 25 sz 19.00-20.00 35 sz 17.00 Friar 40 sz 9.00 Royal Diamond 40 sz 9.00 ID U.S. One Empress 45 sz 18.00 OR U.S. One President 1 1/4" min 22.00 CA California Well Matured Interspecific Type Dapple Dandy 35 sz ord cond 5.00-6.00 Flavorich 35 sz 16.00 flts/ctns 1 lyr trypk CA California Well Matured Interspecific Type Dapple Dandy 21s 7.00 -POMEGRANATES: ctns 2-lyr CA Early Foothill 50s 13.00-14.00 ctns/lugs 2-lyr CA Early Foothill 26s 28.00 30s 28.00 -PRUNES: OFFERINGS LIGHT. 30 lb ctns MI U.S. One Stanley 1 1/4" min 14.00

Philadelphia Herbs

Philadelphia Terminal
Prices as of September 24, 2003
Report Supplied By USDA
MISC HERBS -ANISE: 1/2 ctns CA 24s 20.00-24.00 -ARRUGULA: 4/5 buctns bchd NJ 24s 8.00 ctns bchd WV 24s 9.00 4 lb ctns CA Baby type 14.00 -BASIL: ctns bchd NJ 15s 8.00-9.00 1 kg ctns bchd IS 12s 11.00-13.00 -CELERIAC (CELERY ROOT): 20 lb crts lse CD 10.00 ctns CA 12s 15.00 -CHIVES: 1 kg ctns bchd IS 12s 16.00 -CILANTRO: 4/5 buctns bchd NJ 30s 9.00 few lower 4/5 buctns lse NJ 9.00 ctns bchd OH 30s 8.00-9.00 -DILL: ctns bchd OH 24s 8.00 crts bchd NJ 24s 8.00-9.00 few 6.00-7.00 -DRY ESCHALLOT: 10 lb sks CA 8.00 FR 9.00-10.00 NL 9.00 -HORSERADISH: 5 lb filmbags MO 12.00 -LEMON GRASS: 30 lb ctns FL 35.00 -MARJORAM: 1 kg ctns bchd IS 12s 13.00 -MINT: ctns bchd NJ 12s 8.00 1 kg ctns bchd IS 12s 10.00 -OREGANO: 1 kg ctns bchd IS 12s 13.00 -ROSEMARY: 1 kg ctns bchd IS 12s 13.00 -SAGE: 1 kg ctns bchd IS 12s 13.00 -SALSIFY: OFFERINGS INSUFFICIENT TO QUOTE.
-TARRAGON: 1 kg ctns bchd IS 12s 17.00 -THYME: 1 kg ctns bchd IS 12s 13.00 -WATERCRESS: ctns bchd WV 12s 7.50 24s 11.00-12.00 mostly 12.00

Philadelphia Onions, Potatoes

Philadelphia Terminal Market
September 25, 2003
Report Supplied By USDA
ONIONS AND POTATOES -ONIONS DRY: MARKET ABOUT STEADY. US# 1 OR GENERALLY GOOD QUAL AND COND UNLESS OTHERWISE STATED. Yellow Globe Type NY 50 lb sks med 9.00-10.00 mostly 9.00 mstr cntr 16 3-lb mshsks med 11.00 mstr cntr 20 2-lb mshsks med 10.00-11.00 Grano CA 50 lb sks jbo 10.50 Grano Type CO 50 lb sks col 15.00 jbo 10.00-11.00 Hybrid ID/OR 50 lb sks col 11.00 jbo 10.00-10.50 mostly 10.00 WA 50 lb sks jbo 10.00-10.50 Sweets EC 40 lb ctns lge 24.00 NY 50 lb ctns jbo 23.00 med 18.00 PE 40 lb ctns jbo 25.00 med-lge 18.00 White Boilers CO 25 lb sks 18.00 Red Globe Type NY 25 lb sks lge 6.50-7.00 med 6.00 WA 25 lb sks jbo 6.50-7.00 -POTATOES: MARKET ABOUT STEADY. US# 1 SZ A WASHED OR BRUSHED UNLESS OTHERWISE STATED. NEW CROP Russet Norkotah ID bid 10 5-lb filmbags non sz A 9.00 50 lb ctns 40s 13.50-14.50 50s 13.00-14.00 mostly 13.00 60s 12.50-14.50 mostly 13.00-13.50 70s 12.50-14.00 mostly 13.00-13.50 80s 12.00-13.00 mostly 11.00 100s 10.00-11.00 mostly 10.00-10.50 120s 10.00-10.50 U.S. Two 50 lb ctns 6 oz min 9.50 some 10.00 WA 50 lb ctns 40s 12.00 50s 12.00 60s 12.00-12.50 70s 12.00-12.50 80s 10.50 100s 9.00 WI 50 lb ctns 70s 11.00 80s 10.00 90s 9.00 100s 8.50 Round Red CD 50 lb sks fair qual 6.00 MN/ND 50 lb sks 11.00 50 lb sks sz A 8.00-10.00 mostly 8.50-9.50 sz B 12.00-13.00 NY 50 lb sks sz A 8.00-9.00 mostly 8.50-9.00 sz B 10.00-11.00 mostly 10.00 some 9.00 WA 50 lb ctns 20.00 Creamers 1/4-1 1/4" 36.00 Round White DE 50 lb sks 5.00-6.00 mostly 5.00 lge 7.50-8.00 mostly 7.50 10 lb sks lse 1.00 NJ 50 lb sks 4.00-4.50 Long White CA 50 lb ctns 20.00 Yellow Type Yukon Gold CA 50 lb ctns 20.00 sz B 18.00 MN 50 lb ctns Creamers 1/4-1 1/4" 15.00

EGGPLANT: 4.00-5.00 1/2 BU
ONIONS: SPANISH 8.00-10.00 1/2 BU
PEACHES: 3.00-6.00 1/2 BU.
PEARS: 4.00-7.00 1/2 BU.
PEPPERS: GREEN SM. TO LRGE 6.00-8.00 BU., RED 8.00-10.00, BOTH BU.; HOT 2.00-4.00 1/2 BU., OTHERS 3.00-5.00 BU.
PICKLES: 8.00-14.00 1/2 BU.
PLUMS: 10.00-12.00 1/2 BU.
POTATOES, RED AND WHITE 4.00-7.00 50 LBS. EACH; SWEET 8.00-12.00 1/2 BU.
PUMPKINS: NECK .50-1.25.
RED BEETS: 3.00-4.75 1/2 BU. CUT.
SPINACH: 11.00-16.00 BU.
SQUASH: YELLOW 4.00-7.00, ACORN 3.00-4.00, BUTTERNUT 3.00-4.00, SPAGHETTI 3.50-4.25, ALL 1/2 BU.
SWEET CORN: 1.75-2.75 DOZ.
TOMATOES: RED SM. TO LRGE. 6.00-25.00 25 LBS., YELLOW 5.00-20.00, BOTH 25 LBS.; CHERRY 5.00-7.00 FLAT, GRAPE 8.00-10.50 12 PINT FLAT.
WATERMELONS: SEEDLESS 1.50-2.75, SANGRIA 1.00-2.50.
ZUCCHINI: 10.00-21.00 1/2 BU.
FLOWERS: MUMS 1.50-3.00.
ORNAMENTALS: FACE PUMPKINS SM. TO LRGE. 1.00-4.00; PRIZE WINNERS 10.00-22.00; GOURDS 1.00-2.50 EACH AND 4.00-6.00 1/2 BU.; GOOSE GOURDS 1.50-2.50; JBL 5.00-8.00; BABY PAMS .40-.80; INDIAN CORN .40-2.00 BUNCH, FINGERS .25-.70; POPCORN .50-.75 BUNCH.
SALE DAYS MON., 9:30 A.M. TUES., WED., THURS., FRI., 8:30 A.M. CRAFT SALE OCT. 1, 9 A.M.

PEPPERS LARGE GREEN 11.00-15.00, RED 12.00-15.00 BU.
POTATOES: RED 5.00-6.50, WHITE 7.00-7.50 50 LBS.; SWEET 5.00-9.00 1/2 BU.
PUMPKINS: NECK .95-2.50 EACH.
RED BEETS: 2.00-11.00 BOX
SQUASH: ACORN 8.00, BUTTERNUT 6.00-9.00, SPAGHETTI 2.00, ALL BU.
SWEET CORN: 1.85-3.20 DOZ.
TOMATOES RED SM. TO LRGE. 7.00-22.00 25 LBS
FLOWERS: MUMS 95-4 00
ORNAMENTALS. FACE PUMPKINS .50-5.25; GOURDS 4.50-6.50 1/2 BU., GOOSE GOURDS 1.50-2.00; JBL 5.00-7.50 1/2 BU. BABY PAMS .25-.75 EACH; INDIAN CORN .65-2.95 BUNCH.
SALE DAYS NEXT WEEK: MON., 9 A.M.; TUES., THURS., FRI., SAT. AT 8:30 A.M. CRAFT AUCTION NOV. 8, 8:30 A.M.

Kirkwood Produce

Kirkwood, Pa
Report Supplied by Auction
September 23, 2003
APPLES: 2.00-3.50 1/2 BU.
BEANS: LIMAS 18.00 1/2 BU., SHELLED 2.50-3.25 PINT, GREEN 5.00-10.00, YELLOW 3.00-6.00 1/2 BU.
BROCCOLI: 3.00 BU.
CABBAGE: .20-.70 HEAD.
CAULIFLOWER: .25-1.25 HEAD.
CUCUMBERS: 1.50-7.50 1/2 BU.
EGGPLANT: 2.50-5.50 1/2 BU.
ONIONS: CANDY 5.00-8.00 1/2 BU.
PEACHES: 2.00-3.50 1/2 BU.
PEPPERS: GREEN 4.00-7.50 BU., RED 7.00-15.00 BU.; HOT 5.00 1/2 BU
PICKLES 5.00-11.00 1/2 BU
POTATOES WHITE 1.00-6.50 1/2 BU, RED 1.00-2.00 10 LBS
RED BEETS 5.00-7.00 1/2 BU
SQUASH. BUTTERNUT 5.00-10.00 1/2 BU.; HUBBARD 50-1.50 EA.
SWEET CORN: 1.60-2.75 DOZ
TOMATOES 7.00-18.00 25 LBS., GRAPE 1.00-1.25 QT
WATERMELONS: .05-1.00 EACH
ZUCCHINI: SM TO LGE. 1.50-7.50 1/2 BU.
FLOWERS: MUMS 1.50-3.00 POT.
ORNAMENTALS FACE PUMPKINS .35-.325 EA., JBL 50-6.00 1/2 BU., BABY PAMS 40-.50 EA.; INDIAN CORN 40-1.10 BUNCH, FINGERS 10-.50 BUNCH, DRESSED GOOSE GOURDS 2.25-2.50 EA
SALE DAYS TUES AND THURS. AT 9 A.M

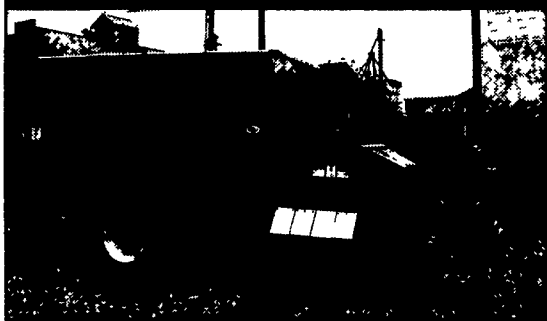
Weaverland Produce Auction

New Holland, Pa.
Report Supplied by Auction
September 23, 2003
APPLES: 3.00-5.00 1/2 BU.
BEANS: GREEN 3.50-14.00, YELLOW 6.00-7.50, LIMAS 12.00, ALL 1/2 BU.
BROCCOLI: 17-.35 HEAD.
CABBAGE GREEN 25-75 HEAD, RED 30.
CANTALOE 35-.85 EA.
CAULIFLOWER: 65 HEAD.
CUCUMBERS: 2.00-8.00 1/2 BU
EGGPLANT: 1.50-3.00 1/2 BU
NECTARINES 6.50 1/2 BU
ONIONS. SPANISH 11.00 1/2 BU
PEACHES: 4.00-8.00 1/2 BU
PEARS: 6.00-7.00 1/2 BU

Leola Produce

Leola, Pa
Report Supplied by Auction
September 23, 2003
APPLES: 3.00-5.00 1/2 BU.
BEANS: GREEN 6.00-8.00, YELLOW 8.00-10.00, LIMAS 15.00-25.00, ALL 1/2 BU.
BROCCOLI: 25-.45 HEAD.
CABBAGE. RED .40-.50, GREEN 40-.60 HEAD.
CANTALOPES: .40-.80 EACH.
CAULIFLOWER: .60-.80
CUCUMBERS: 4.00-7.00 1/2 BU.

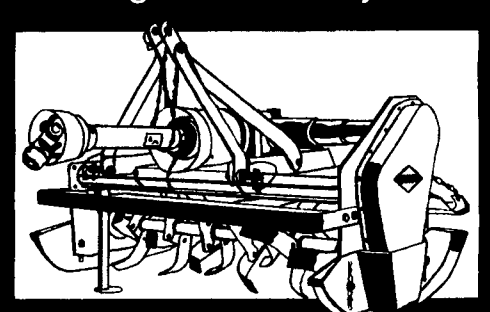
FOR RENT - ROW MULCHER



Millcreek Model 75RM
5.4 Cu. Yd. Capacity
PTO Driven, Requires 24 PTO HP, 1 Hyd. Remote.
Perfect for mulching fruit trees, blueberries, raspberries, etc.
Rentals starting @ \$120/day

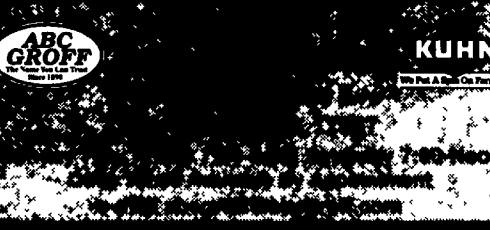
(717) 355-2121 (800) 355-2121
110 South Railroad Ave., New Holland, PA
Monday thru Friday 7:00-5:00
Other times by appointment

Want more than a garden variety tiller?



Try the Kuhn Economically-Priced EL 32 Power-Tiller.

- ◆ Three sizes to choose from. 42", 50", & 58"
- ◆ 30 HP rating (continuous)
- ◆ Easily offset up to 17"
- ◆ Kuhn offers 39 models of tillers from 30 to 200 HP.



Five-Area Weekly Average Direct Slaughter Cattle

St. Joseph, Mo., September 22, 2003 - USDA Market News Service

Sales in Texas/Oklahoma, Kansas, Nebraska, Colorado, and Iowa/Minnesota Feedlots for Week Ending Sunday, September 21, 2003
Confirmed Sales 173,432, Week Ago 277,551, Year Ago 166,713

LIVE FOR BASIS SALES - Beef Breeds:

SLAUGHTER STEERS	Head Count	Weight Range	Price Range	Avg. Weight	Avg. Price
Over 80% Choice	1,981	1173-1425	87.00-93.00	1,309	90.35
65-80% Choice	4,396	1050-1390	86.25-94.50	1,303	92.30
35-80% Choice	42,322	1080-1400	87.00-94.00	1,259	89.62
0-35% Choice	8,160	1060-1350	87.50-90.00	1,240	89.43
TOTAL all grades	56,859	1050-1425	86.25-94.50	1,261	89.82

SLAUGHTER HEIFERS

SLAUGHTER HEIFERS	Head Count	Weight Range	Price Range	Avg. Weight	Avg. Price
Over 80% Choice	1,940	1050-1250	89.00-94.00	1,176	91.48
65-80% Choice	5,881	1050-1310	89.00-94.00	1,179	91.80
35-65% Choice	52,366	1000-1285	87.00-94.00	1,123	89.88
0-35% Choice	1,682	1075-1185	89.00-90.00	1,114	89.25
TOTAL all grades	59,869	1000-1310	87.00-94.00	1,130	90.10

DRESSED DELIVERED BASIS SALES - Beef Breeds:

SLAUGHTER STEERS	Head Count	Weight Range	Price Range	Avg. Weight	Avg. Price
Over 80% Choice	1,045	781-866	141.00-145.00	830	144.39
65-80% Choice	5,308	713-880	140.00-147.00	825	144.87
35-65% Choice	5,432	700-875	140.00-149.00	799	143.53
0-35% Choice	40	763	140.00	763	140.00
TOTAL all grades	11,825	700-880	140.00-149.00	813	144.20

SLAUGHTER HEIFERS

SLAUGHTER HEIFERS	Head Count	Weight Range	Price Range	Avg. Weight	Avg. Price
Over 80% Choice	1,438	693-790	142.00-148.00	742	145.05
65-80% Choice	3,353	677-784	140.00-147.00	727	144.89
35-65% Choice	14,246	650-807	138.00-147.00	745	144.81
0-35% Choice					
TOTAL all grades	9,037	650-807	138.00-148.00	738	144.88

WEEKLY WEIGHTED AVERAGES

This Week:	Head Count	Avg. Weight	Avg. Price
Live Steer	56,859	1,261	89.82
Live Heifer	59,869	1,130	90.10
Dressed Steer	11,825	813	144.20
Dressed Heifer	9,037	738	144.88

Same Period Last Week:

Live Steer	83,706	1,263	88.79
Live Heifer	66,013	1,140	88.89
Dressed Steer	24,386	829	141.85
Dressed Heifer	27,768	754	142.82

Same Period Last Year:

Live Steer	52,131	1,302	66.53
Live Heifer	43,147	1,184	66.81
Dressed Steer	30,325	855	103.61
Dressed Heifer	17,916	774	104.10

Leola Produce Auction
will have a special
Annual Fall Ornamental Craft Sale
Wednesday, October 1, 2003
9:00 A.M.
Featuring Items Such As:

- Pumpkin Creations
- Corn Dolls
- Corn Brooms
- Corn Stalk Brooms
- Dried Flowers
- Dressed Geese Gourds
- No Woodcrafts Please

Notice: There Will Be No Produce Or Bulk Loads of Pumpkins, Indian Corn or Gourds Sold At This Sale

Leola Produce Auction, Inc.
Wholesale Auction of Lancaster Co Vegetables
Brethren Church Roau
Leola PA 17540
Office 717-656-9592
Fax 717-656-8346
Lic #AH000028-L

ALL-WHEEL STEER Trailing Wagons
Train of Wagons follow the leader precisely. Excellent for nurseries, produce growers, orchards.

2,000 Lb. Carrying Capacity,
Pneumatic Tires,
5'x12' Expanded Metal Bed.

For more information call Elam at
Sauder's Nursery 717-354-9851