

PRODUCE MARKETS

Philadelphia Fruit

Terminal Market
September 17, 2003
Report Supplied By USDA

CITRUS FRUITS - GRAPEFRUIT: MARKET STEADY. ctns CA Shprs 1st Grade Red 23s 15.00 27s 17.00 32s 17.00 36s 17.00 40s 16.00-18.00 48s 14.50 White 40s 14.50 -LEMONS: MARKET STEADY. ctns AZ Shprs 1st Grade 95s 15.00 115s 16.50 CA Shprs 1st Grade 140s 31.00 165s 29.50 Shprs Choice 95s 15.50 115s 15.50-16.00 140s 15.50-17.00 mostly 15.50-16.00 165s 15.00 17 kg ctns CL 95-115s fair cond 8.00-10.00 165s fair cond 8.00-10.00 -LIMES: MARKET STEADY. 10 lb ctns MX Seedless Type 42s 8.00 48s 7.25-8.00 54s 6.50 63s 5.00 40 lb ctns MX Seedless Type 175s 25.00 200s 22.00 -ORANGES: MARKET STEADY. ctns CA Shprs 1st Grade Valencia 48s 17.50 56s 17.00-17.50 mostly 17.00 72s 14.00-16.00 mostly 14.00-15.00 88s 12.50-14.00 mostly 13.50-14.00 113s 12.00-13.00 mostly 12.00-12.50 138s 11.00-11.50 Shprs Choice Valencia 56s 12.50 72s 11.50 88s 11.50 113s 11.00 138s 10.50 SF Navel 40s 14.00 88s 14.00 -TANGELOS: OFFERINGS INSUFFICIENT TO QUOTE.

BERRIES -BLUEBERRIES: MARKET LOWER. flts 12 6-oz cups with lids CD med 18.00 ord cond 5.00-8.00 MI med 16.00-18.00 mostly 17.00 -MISC BERRIES: OFFERINGS INSUFFICIENT TO QUOTE.

RASPBERRIES: MARKET HIGHER. flts 12 6-oz cups with lids CA Red 20.00 -STRAWBERRIES: MARKET LOWER flts 12 1-pt btkts CA med-lge 14.00-16.00 mostly 16.00 one label 19.00-22.00 fair cond 10.00-12.00 flts 8 1-lb ctns with lids CA med-lge one label 19.00 fair cond 14.00 ord cond 2.00-3.00

MELONS -CANTALOUPS: MARKET LOWER. ½ ctns CA 9s 8.00-9.00 mostly 9.00 12s 8.00-10.00 mostly 10.00 15s 9.00-10.00 -HONEYDEWS: MARKET SLIGHTLY LOWER. ½ ctns CA 4s 7.50-8.50 5s 8.50-10.50 some 11.00 6s 9.50-10.50 some 11.00 -MISC MELONS: OFFERINGS INSUFFICIENT TO QUOTE.

WATERMELONS: OFFERINGS INSUFFICIENT TO QUOTE

NON-CITRUS FRUITS -APPLES: MARKET STEADY. ctns trypk CA U.S. ExFcy Granny Smith 88s 30.00 Gala 88s 30.00 WA WAExFcy Gala 88s 38.00 Ginger Gold 100s 18.00 U.S. ExFcy Gala 64s 24.00 ctns celpk NY U.S. ExFcy McIntosh 80s 24.00 100s 22.00 U.S. One McIntosh 80s 13.00-14.00 100s 14.00 120s 11.00 140s 11.00 VT U.S. ExFcy McIntosh 80s 26.00 26.00 96s 15.00 100s 14.00 ctns 12 3-lb filmbags NY U.S. ExFcy McIntosh 2 ½" up 13.50-14.00 2 ½" up 12.00 CONTROLLED ATMOSPHERE STORAGE ctns trypk WA WAExFcy Red Delicious 64s one label 24.00 72s 17.00-20.00 mostly 20.00 80s 17.00-20.00 88s 18.00-20.00 mostly 18.00 preferred labels 22.00-22.50 100s 16.00-20.00 mostly 18.00-20.00 one label 21.50 113s 16.00-20.00 125s 16.00-17.50 some 19.50-20.00 Golden Delicious 72s one label 24.00 80s one label 24.00 88s 22.50 100s 20.50 Gala 72s 28.00 80s 28.00 88s 26.00-26.50 one label 34.50 100s 20.50 113s 20.50 -AVOCADOS MARKET ABOUT STEADY ctns 2 ltr CA Hass 48s 54.00-55.00 CL Hass 48s 29.00-30.00 50s 29.00-31.00 mostly 30.00-31.00 60s 29.00-30.00 ctns 1 ltr FL U.S. Comb Various Greenskin Varieties 9s 14.00 14s 14.00 -BANANAS MARKET STEADY 40 lb ctns IMPORT 10.50 fair qual 9.00-9.50 mostly 9.50 sml 7.50-8.00 petite 13.50 40 lb ctns bagged IMPORT 10.50 -FRUITS OTHER. MARKET ABOUT STEADY. ctns 1 ltr CA Apple Pears Hosui 12s 14.00 18s fair appearance 6.00 Various Varieties 12s 13.00 FL Carambola - Star Fruit 20s 18.00 25s 18.00 30s few 18.00 GA Apple

Golden 9s 11.00-12.00 mostly 12.00 10s 11.00-12.00 mostly 12.00 JM Strawberry 9s 10.00 30-35 lb ctns BZ Maradol 9s 23.00-25.00 -PEACHES: MARKET ABOUT STEADY. ctns 2 ltr trypk CA California Well Matured Various White Flesh Varieties 18s 10.00 30s 9.00-10.00 32s 9.00-10.00 36s 8.00-9.00 O'Henry 28s 10.00 30s 10.00 Ryan Sun 28s 10.00 30s 10.00 ½ bucrts NJ No Grade Marks Various Yellow Flesh Varieties 3"up 12.00-13.00 2 ¼"up 12.00-13.00 mostly 13.00 2 ½"up 10.00-11.00 Various White Flesh Varieties 2 ¾"up 15.00 25 lb ctns lse CA California Well Matured O'Henry 48 sz 8.00 Ryan Sun 48 sz 8.00 -PEARS: MARKET ABOUT STEADY. 4/5 bucrts CA U.S. One Mountain Bartlett 70s 28.00 80s 28.00 90s 26.00-27.00 100s 23.00-25.00 4/4 bucrts wrpd WA U.S. One Bartlett 80s 24.50 90s 24.50 100s 22.50 110s 17.50 36 lb ctns CA U.S. One Bartlett 80 sz 21.00 few 18.00 90 sz 20.00 few 18.00 100 sz 16.00-17.00 mostly 17.00 110 sz few 15.00 120 sz 13.00-15.00 mostly 14.00-15.00 135 sz 13.00 -PINEAPPLES: MARKET STEADY. ctns 1 ltr CR golden ripe 5s 18.00 6s 18.00 7s 17.00 -PLANTAINS: MARKET ABOUT STEADY. 50 lb ctns CB Green 13.00 EC Green 13.00 -PLUMS: MARKET STEADY. 28 lb ctns lse CA California Well Matured Angeleno 30 sz 14.00-15.00 35 sz 14.00-15.00 40 sz 12.00 Friar 35 sz 15.00 40 sz fair cond 7.00-8.00 45 sz fair cond 7.00-8.00 Joanna Red 30 sz 12.00 35 sz 12.00 40 sz 9.00-10.00 45 sz 9.00-10.00 California Utility Angeleno 30 sz 10.00 40 sz 8.00-9.00 -POMEGRANATES: OFFERINGS LIGHT. ctns 2-ltr CA Early Foothill 30s 28.00 32s fair appearance 20.00 42s fair appearance 16.00 48s fair appearance 13.00 -PRUNES: OFFERINGS LIGHT 30 lb ctns MI U.S. One Stanley 1 ¼" min 15.00

Philadelphia Vegetables

Terminal Market
September 17, 2003
Report Supplied By USDA

VEGETABLES -ARTICHOKEs: OFFERINGS LIGHT. ctns CA Globe Thorned 30s 14.00 36s 10.00-14.00 lge lse few 26.00 -ASPARAGUS: OFFERINGS LIGHT. 11 lb ctns/crts bchd PE Green lge 26.00 -BEANS: MARKET LOWER. bucrts/crts NJ Round Green Type Machine Picked fair cond 8.00-10.00 NY Round Green Type Machine Picked 13.00-14.00 some 12.00 few high as 16.00 PA Round Green Type Machine Picked 12.00 VA Round Green Type Machine Picked 12.00-14.00 5 lb ctns GU AIR Hericot Vert (French Type) 11.00-12.00 mostly 11.00 -BEETS: MARKET ABOUT STEADY. ctns bchd NJ 12s 8.00-9.00 mostly 8.00 OH 12s 8.00-9.00 mostly 8.00 25 lb filmbags lse CD med 4.50-6.00 NJ med 5.00-6.00 -BROCCOLI: OFFERINGS LIGHT FOR LOOSE CROWNS. MARKET ABOUT STEADY. ctns CA bchd 14s 18.00-20.00 mostly 20.00 few 21.00 CD bchd 14s 15.00 ME bchd 14s 14.00-15.00 20 lb ctns lse ME Crown Cut 20.00 -BRUSSELS SPROUTS: MARKET HIGHER. 25 lb ctns CA 20.00-21.00 few 22.00 -CABBAGE: MARKET ABOUT STEADY. 1 ½ bucrts & 50 lb ctns NJ Round Green Type med 6.00-7.00 Red Type med 6.00-7.00 PA Round Green Type med 6.00-6.50 mostly 6.00 Red Type med 8.00 50 lb ctns NY Round Green Type lge 4.00-5.00 mostly 4.50 PA Round Green Type lge 4.50-5.00 1 ½ bucrts & 40 lb ctns PA Savoy Type med 8.00 -CARROTS: MARKET CA HIGHER, OTHERS ABOUT STEADY. sks 48 1-lb filmbags CA Topped med-lge 14.00-15.00 mostly 14.00 CD Topped med-lge 8.00 sks 24 2-lb filmbags CA Topped med-lge 14.00-15.00 mostly 14.00 CD Topped med-lge 8.00 sks 16 3-lb filmbags CA Topped med-lge 14.00-15.00 mostly 14.00 sks 10 5-lb filmbags CA Topped med-lge 14.00-15.00 mostly 14.00 CD Topped med-lge 8.00 50 lb sks lse CA Topped jbo 16.00-18.00 CD Topped jbo 7.50-9.00 few 10.00 ctns bchd CA Bunched 24s 12.00-14.00 mostly 12.00 ctns 20 1-lb filmbags CA Baby Peeled 13.00-14.00

few 15.00 ctns 10 2-lb filmbags CA Baby Peeled 14.00-15.00 -CAULIFLOWER: MARKET LOWER. ctns flmwrpd CA 12s 16.00-17.00 mostly 16.00 one label 20.00 9s 14.00 one label 19.00 ctns jacket pkd CD 12s 14.00 -CELERY: MARKET ABOUT STEADY. ctns CA 2 dz 15.00 one label 19.00 fair cond 11.00-13.00 2 ½ dz 15.00-18.00 one label 19.00 fair cond 11.00 4 dz 10.00-11.00 filmbags 30s 18.00-20.00 CD 1 ½ dz 9.00 2 dz 11.00 some 9.00 2 ½ dz 11.00 -CHINESE CABBAGE: MARKET STEADY. 1 1/9 bucrts OH 9.00 30 lb ctns CA Nappa 15.00 50 lb ctns CD Nappa 15.00 NY Nappa 12.00 OH Nappa 12.00 -CORN-SWEET: MARKET ABOUT STEADY. wbcrts GA Yellow 4-4 ½ dz 5.00-6.00 NJ Yellow 4-4 ½ dz 6.50-7.00 White 4-4 ½ dz 6.50-7.00 NY Yellow 4-4 ½ dz 5.00-6.00 mostly 6.00 few 7.00 White 4-4 ½ dz 6.00-7.00 -CUCUMBERS: MARKET ABOUT STEADY. flts/ctns flmwrpd CD CDOne Long Seedless med 12s 7.50-8.00 mostly 8.00 sml 12s 8.00 WAXED 1 1/9 bucrts/crts NC med fr qual 14.00-15.00 sml 14.00-15.00 PA med 20.00 VA med 20.00 fr qual 12.00-16.00 sml 14.00-16.00 UNWAXED 1 1/9 bucrts/crts NJ med 18.00 fr qual 13.00 sml fair cond 9.00-10.00 1 1/9 bucrts NJ Pickles med 15.00-16.00 -EGGPLANT: MARKET ABOUT STEADY. 1 1/9 bucrts/crts GA med 11.00 NJ med 8.00-10.00 fair qual 5.00-6.00 lge 6.00 OH med 10.00 5 kg ctns NL sml few 30.00 ctns/crts HD Chinese 22.00-25.00 ord cond 10.00 1 1/9 bushel cartons NJ Sicilian med 10.00 ctns/crts HD Thai 30.00-32.00 1 1/9 bucrts NJ White med 10.00 ctns/crts HD Indian 25.00-26.00 -ENDIVE: MARKET SLIGHTLY LOWER. 1 1/9 bucrts/crts NJ 8.00 OH 8.00-8.50 10 lb ctns BL Witloof 16.00 -ESCAROLE: MARKET SLIGHTLY LOWER. 1 1/9 bucrts/crts NJ 8.00 OH 8.00-8.50 -GARLIC: MARKET STEADY. 30 lb ctns CA White super col 25.50 col 24.00 super jbo 22.50 # 8 25.00 CQ White # 9 26.00-28.00 -GREENS: MARKET ABOUT STEADY. ctns bchd CA Swiss Chard 12s 12.00-14.00 Red 12s 12.00-14.00 ctns/crts bchd NC Collard 6.00-7.00 Mustard 7.00 NJ Collard 6.50-7.00 Kale 7.00

(Turn to Page A13)



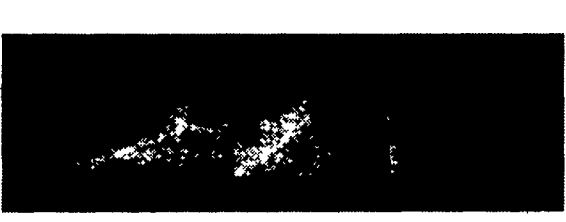
477 East Farmersville Rd.
Lancaster, PA 17602
(717) 395-8001



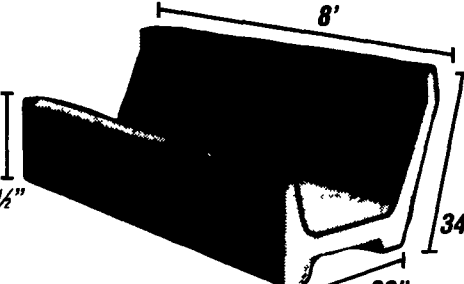
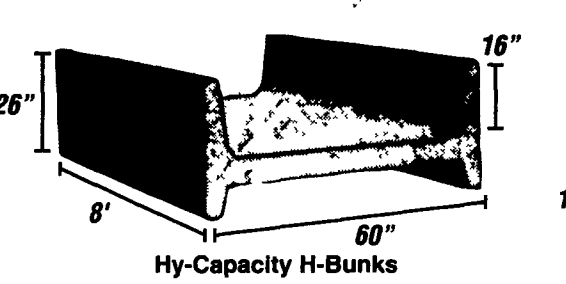
Concrete Slatted Free Stall Barn



Long Core Cattle Waffle Slats



Precast Concrete T-Wall Bunker Silos or commodity buildings built to suit your needs. Bunkers available in 8 Ft. or 12 Ft. High



End Sections Available For Feed Bunks

Give us a call for more information on hog, beef, dairy and heifer barns.

Hi Calcium Lime
Dry, applied with boom truck
80% CCE-fast acting

Starting \$14.25 per ton

Central Berks Co., PA
Call for quotes in other areas
\$1/per ton COD discount

Dean Hirneisen Lime Spreading
610-775-3454 (cell) 610-780-4298

POWERTRAIN ENGINES

High quality engines at special prices. Parts interchange with another popular engine

5.5 HP \$250 8 HP \$330
13 HP \$440 13 HP electric start \$545

Georgetown Hydraulics
343 Christiana Pike
Christiana, PA 610-593-2753
Dealer inquiries invited.

Can You Afford To Waste Hay? Try the **BALE BOSS Hay Saver**

STEIN-WAY Barn Equipment

Free Stalls Sand Traps™
Self-locks Waterers
Gates Bale Boss Hay Savers

Call: **Joe Speicher**
175 North Imler Valley Rd
Imler, PA 16655
(814) 276-3304
1-888-605-2422

Quality Barn Equipment at Economical Prices

See us at Ag Progress Days - West 2nd Street