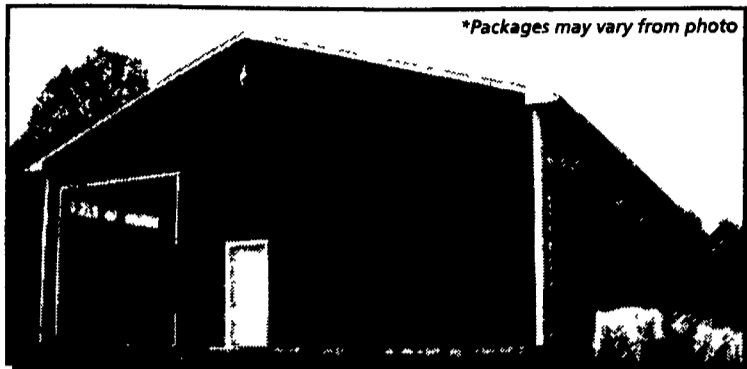


# CARTER Lumber

## Pole Barns & Garages

\*Packages may vary from photo



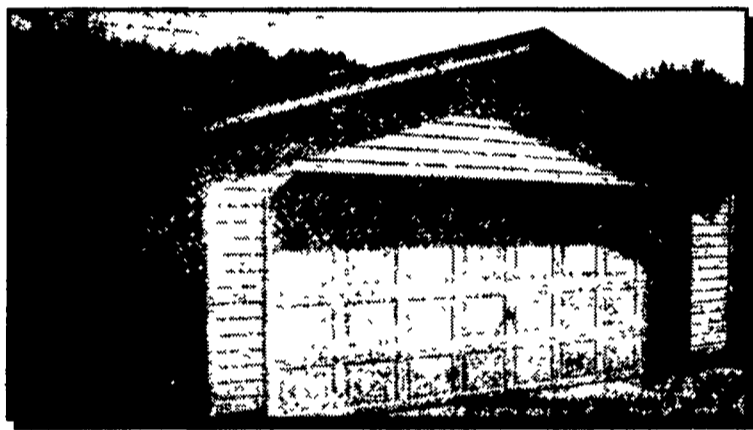
**FREE COMPUTER DESIGN**  
Any size, any style, any design. Check your local Carter Lumber store or carterlumber.com for an estimate.

### STANDARD FEATURES

- 24', 30', 40' widths x any length
- Treated posts & skirt boards
- 2" x 4" wall girts
- T1-11, metal or vinyl siding (24' & 30' wide only)
- Truss w/1' eave overhang & soffit
- 25 yr. O.C. Fiberglas® shingles on 7/16" OSB sheathing or Fabral® metal roofing
- Sliding or overhead door w/hardware
- Optional 3' steel passage door
- Nails, trim & plans
- 40' barns available 14' high

Painted Steel Siding w/ sliding door	8' HIGH 24' x 24'	10' HIGH 30' x 40'	12' HIGH 40' x 64'
25 yr. Painted steel roof	<b>\$2,709</b>	<b>\$4,740</b>	<b>\$10,098</b>

\* Also available in T1-11 and vinyl - customize your pole building



**FREE COMPUTER DESIGN**  
Any size, any style, any design. Check your local Carter Lumber store or carterlumber.com for an estimate.

### STANDARD FEATURES

- 16" O.C. wall framing w/ treated bottom plate
- Siding
- Roof truss w/1' eave overhang & soffit
- 1/2" OSB roof sheathing
- #15 felt
- 25 yr. O.C. Fiberglas® shingles
- Ridgevent
- Eave & gable drip edge
- CSE-100 3/0 man door
- 9100 series garage door (insulated)
- Also includes nails, hardware, plans & instructions

	1 CAR 18' x 22'	2 CAR 22' x 24'	26' x 24'
VINYL SIDING	<b>\$2,725</b>	<b>\$3,292</b>	<b>\$3,638</b>

\* Available in basic & premium packages & many other sizes

## Field Drain Tile



THE YARD SPECIAL BUY!

♦Solid or perforated  
**4" x 100'**..... **\$17<sup>29</sup>**  
(9504-solid / 9542-perf)  
**4" x 250'**..... **\$43<sup>29</sup>**  
(9500-solid / 9502-perf)

## Metal Roofing

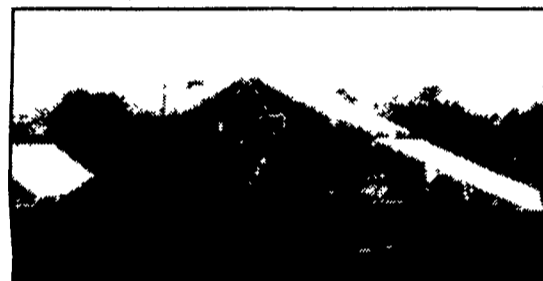


### PAINTED GRANDRIB 3

♦Custom lengths available ♦White in stock ♦19 colors to choose from ♦36" actual coverage ♦Stock sizes

per 10' sheet ... **\$15<sup>30</sup>**  
 per 12' sheet ... **\$18<sup>36</sup>**  
 per 14' sheet.. **\$21<sup>42</sup>**  
 per 16' sheet **\$24<sup>48</sup>**

## Trusses



### 24' SUPER TRUSS

♦4/12 pitch with 1' overhang ♦Good for 4' on center at 30 lb. live load. Check local listing codes (15575)

**\$32<sup>99</sup>**

## Dimension Lumber

♦We stock quality lumber in large quantities ♦Contact your local Carter Lumber for available species ♦Hem Fir or Doug Fir available in 22', 24' and 26'

	10'	12'	14'	16'	18'	20'
SPF 2" x 4"	\$3 <sup>48</sup>	\$3 <sup>76</sup>	\$4 <sup>43</sup>	\$5 <sup>44</sup>	\$6 <sup>60</sup>	\$7 <sup>33</sup>
SPF 2" x 6"	\$5 <sup>10</sup>	\$5 <sup>70</sup>	\$6 <sup>51</sup>	\$8 <sup>08</sup>	\$9 <sup>27</sup>	\$10 <sup>30</sup>
SPF 2" x 8"	\$6 <sup>07</sup>	\$8 <sup>32</sup>	\$8 <sup>87</sup>	\$10 <sup>77</sup>	\$12 <sup>48</sup>	\$14 <sup>13</sup>
SPF 2" x 10"	\$7 <sup>42</sup>	\$10 <sup>40</sup>	\$13 <sup>30</sup>	\$14 <sup>91</sup>	\$16 <sup>05</sup>	\$16 <sup>43</sup>
SPF 2" x 12"	\$12 <sup>20</sup>	\$14 <sup>40</sup>	\$16 <sup>24</sup>	\$20 <sup>48</sup>	\$26 <sup>10</sup>	\$29 <sup>00</sup>

## Treated Lumber

♦All of our treated lumber is quality grade stamped and carries a limited lifetime warranty against rot & decay ♦Southern Yellow Pine

	8'	10'	12'	14'	16'
#2 2" x 4"	\$2 <sup>39</sup>	\$3 <sup>39</sup>	\$3 <sup>89</sup>	\$4 <sup>79</sup>	\$5 <sup>59</sup>
#2 2" x 6"	\$3 <sup>59</sup>	\$5 <sup>09</sup>	\$6 <sup>29</sup>	\$6 <sup>89</sup>	\$8 <sup>89</sup>
#2 2" x 8"	\$5 <sup>59</sup>	\$7 <sup>39</sup>	\$9 <sup>39</sup>	\$10 <sup>19</sup>	\$12 <sup>49</sup>
Standard 5/4" x 6"	\$4 <sup>19</sup>	\$5 <sup>19</sup>	\$6 <sup>19</sup>	\$7 <sup>19</sup>	\$9 <sup>39</sup>
4" x 4"	\$4 <sup>99</sup>	\$7 <sup>99</sup>	\$9 <sup>19</sup>	\$9 <sup>49</sup>	\$11 <sup>89</sup>

**HOURS: Mon. thru Fri. 7:30-6:00 • Sat. 7:30-4:00 • Sun. 9:00-3:00**

Good 9/14 thru 9/19/03

### LANCASTER

LBR. (717) 397-4829 / FAX (717) 397-4865  
(Closed Sunday)

### ELIZABETHTOWN

LBR. (717) 367-1886 / FAX (717) 367-3858  
PEH. (717) 367-7707

### CARLISLE

LBR. (717) 245-0404 / FAX (717) 245-9361  
PEH. (717) 245-2486 / FAX (717) 245-0295

### CHAMBERSBURG

LBR. (717) 263-0822 / FAX (717) 263-7077

### NORTHUMBERLAND

LBR. (570) 473-8311 / FAX (570) 473-7149



Visit us online at carterlumber.com