

Exhibitors Flock To York Fair Market Lamb, Breeding Sheep Shows

DAVE LEFEVER
Lancaster Farming Staff

YORK (York Co.) — Sarah Doyle made an impressive appearance in both the market lamb and breeding sheep shows in the new Toyota Arena at the York Fair this week.

The youth from Red Lion exhibited the junior grand champion market lamb as well as the junior supreme ram, a Southdown.

Doyle, 13, is a member of the York County 4-H Lamb Club. This is her second year in the show ring.

She lives on the farm of her parents, Rick and Karen Doyle. The family keeps "sheep, chickens, and cats" on farm, Sarah said.

Amanda Miller of Bernville showed the supreme champion female in the open show, a Southdown ewe.

Supreme ram honors in the open breeding show went to a Cheviot ram exhibited by John Eaton and Melissa Trostle, both of Windsor.

Travis Flory of Red Lion showed the junior supreme female, a crossbred commercial ewe.

Grand and reserve champion in the open market lamb show went to Lacy Murray and Melissa Trostle, respectively.

Rick Jones of East Berlin exhibited the junior reserve champion market lamb.

Tasha Flory of Red Lion was named grand champion in the showmanship contest, and Tony Haugh of Red Lion was champion lamb fitter.

Bill McCauley of Chester County judged the shows, which featured more than 400 sheep and lambs, according to Patricia Holloway, assistant livestock superintendent.

OPEN SHOW

Lightweight: 1. Matt Bankert. 2. Rick Jones.
Light mediumweight: 1. Maggie Noonan. 2. Rick Jones.
Mediumweight: 1. Melissa Trostle. 2. Rick Jones.
Light heavyweight: 1. Matt Trostle. 2. Melissa Trostle.
Heavyweight: 1. Lacy Murray. 2. Melissa Trostle.

GRAND CHAMPION
Lacy Murray
RESERVE GRAND CHAMPION
Melissa Trostle
SUPREME RAM
John Eaton and Melissa Trostle
SUPREME EWE
Amanda Miller
WOOL BREEDS OPEN SHOW
SUPREME CHAMPION RAM
Ruth Hartman
SUPREME CHAMPION EWE
Melana Lovell
WOOL BREEDS JUNIOR SHOW
SUPREME CHAMPION EWE
Rebecca Butt
SUPREME CHAMPION RAM
Enc Bankert
JUNIOR SHOW

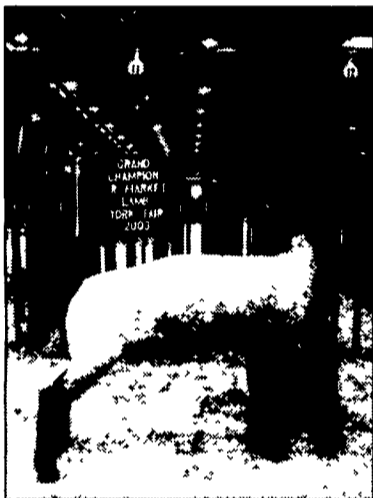
Lightweight: 1. Matthew Bankert. 2. Mark Brown.
Light mediumweight: 1. Rick Jones. 2. Maggie Noonan.
Mediumweight: 1. Rick Jones. 2. Hope Long.
Light heavyweight: 1. Rick Jones. 2. Jeffrey Emenheiser.
Heavyweight: 1. Sarah Doyle. 2. Rick Jones.
GRAND CHAMPION FITTER
Tony Haugh
GRAND CHAMPION SHOWMAN
Tasha Flory
SUPREME RAM
Sarah Doyle
SUPREME EWE
Travis Flory



Amanda Miller and her dad, Ron, with Amanda's supreme open breeding show champion ewe, a Southdown.



Travis Flory's crossbred ewe was supreme champion in the youth breeding sheep show.



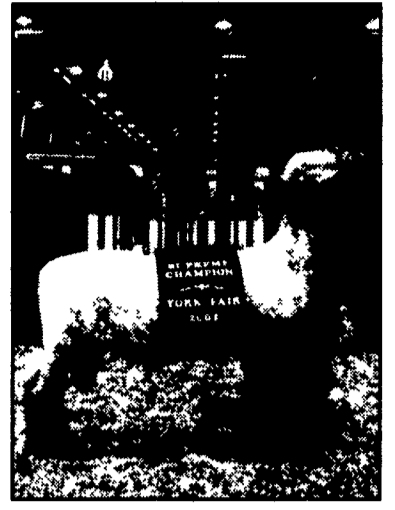
Sarah Doyle shows her junior grand champion market lamb.



Rick Jones is pictured with his junior reserve champion market lamb.



This Cheviot exhibited by Melissa Trostle and John Eaton was supreme champion ram in the open breeding show.



This Southdown ram shown by Sarah Doyle is supreme champion in the youth breeding sheep show.

Donald Sunday Shows Top Steer At York Fair

DAVE LEFEVER
Lancaster Farming Staff

YORK (York Co.) — Donald Sunday's 1270-pound black steer was named grand champion at the York Fair Market Steer Open Show on Monday.

Sunday, of Dallastown, has been showing beef cattle for more than seven years and is a senior at Dallastown High School. He is the son of Donald and Diane Sunday.

Shane Miller exhibited the reserve grand champion market steer.

YORK FAIR OPEN CLASS MARKET STEERS

ANGUS
Lightweight: 1. Kyle Whitebread. 2. Justin Whitebread.
Mediumweight: 1. Herman Hake. 2. Corey Hunt. 3. Ethan Hunt.
Light heavyweight: 1. Andrea Foore. 2. Luke Cuculis.
Heavyweight: 1. Jamie Welsh. 2. Katie Myers. 3. Zac Kinsley.
Breed Champion: Jamie Welsh.
Breed Reserve Champion: Andrea Foore.

HEREFORD
Lightweight: 1. Tina Brown.
Breed Champion: Tina Brown.
LIMOUSIN
Lightweight: 1. Ryan Baldwin.
Mediumweight: 1. Pete Koegel.
Breed Champion: Ryan Baldwin.
Breed Reserve Champion: Pete Koegel.
OTHER BREEDS
Lightweight: 1. Hope Long. 2. Herman Hake. 3. Donald Sunday.
Mediumweight: 1. Cassandra Hake. 2. Herman Hake. 3. Richard Heineman.
Light heavyweight: 1. Shane Miller. 2. Cory Thompson. 3. Lonnie Engle.
Heavyweight: 1. Donald Sunday. 2. Denton Grim. 3. Richard Heineman.
Breed Champion: Donald Sunday.
Breed Reserve Champion: Shane Miller.
SHORTHORN
Lightweight: 1. Kelly Hain.
Mediumweight: 1. Brooke Keeney.
Light heavyweight: 1. Cassandra Hake.
Breed Champion: Cassandra Hake.
Breed Reserve Champion: Kelly Hain.
SIMMENTAL
Lightweight: 1. Dustin Finchbaugh.
Mediumweight: April Daugherty.
Breed Champion: Dustin Finchbaugh.
Breed Reserve Champion: April Daugherty.

GRAND CHAMPION
Donald Sunday
RESERVE GRAND CHAMPION
Shane Miller



AUCTION

By Order of Secured Creditor

New Facility
Constructed
in 2001!

This will not effect any of their other operations!

MARSH INDUSTRIES

2301 East High Avenue
New Philadelphia, Ohio
(South of Canton, Ohio)

SATURDAY
Sept. 27
10AM

2001 PLANING LINE (Over \$250,000 Invested!) ■ '01 AUTOMATED LBR HANDLING Lbr Infeed Rollcases, 5' x 16' & 5' x 20' ■ '01 AUTOMATED LBR HANDLING Lbr Infeed Deck, 12' x 16' 6-strand green chain ■ '01 AUTOMATED LBR HANDLING Lbr Infeed Belt to Planer 24" x 30" ■ '01 AUTOMATED LBR HANDLING Waste Belt Conveyor 24" x 120" ■ '98 YATES AMERICAN Carb Dbl Surfacer. (Complete system is elevated)

2001 COMPUTERIZED OPTIMIZING GROUP 7 GANG RIPPING SYSTEM (Over \$1.2M Invested!) ■ '01 AUTOMATED LBR HANDLING Lbr Infeed Deck to Gang Rip 15' x 30', 6-strand roof top ■ '01 MEREEN JOHNSON Mdl 424-DDC/SR Gang Rip Saw, w/DYSIS-II Computerized Sys ■ '01 AUTOMATED LBR HANDLING Lbr Infeed Rollcase to Saw 36" x 16" ■ '01 AUTOMATED LBR HANDLING Lbr Outfeed Belt Conveyor 24" x 12" ■ '01 AUTOMATED LBR HANDLING Waste Conveyor 20" x 15' (Complete system is elevated)

2001 COMPUTERIZED OPTIMIZING DEFECT LINE (Over \$750,000 Invested!) ■ '01 AUTOMATED LBR HANDLING Lbr Transfer Deck 12' x 40', 4-strand ■ 2-2001 BARR MULLIN Mdl The Brute Computerized Optimizing Defect Saw w/2-BARR MULLIN 13-sorting outfeed conveyors, w/'01 Waste Belt Conveyors 24" x 25', '01 Product Transfer Belt Conveyor 15' x 15' (Complete System is elevated)

2001 BAND RESAW LINE ■ '01 Lbr Transfer Deck 12' x 25' ■ '00 BAKER Mdl BBR-0 Band Resaw ■ '98 BAKER Mdl BBR-0 Band Resaw

STRAIGHT LINE AND GANG RIP SAWS ■ SCMI Mdl M3 12" Gang Rip Saw ■ 2-DIEHL 750 Straight Line Rip Saws

SECONDARY MACHINES ■ 3-2001 ADVANCE MATERIAL HANDLING 12,000 lb Hyd Lbr Lift Tables 4' x 18" ■ BUSS Mdl 88 Single Surfacer, 7" x 30" ■ 5-H&A Swing Saws ■ 2-AMERICAN 6,000 lb Hyd Lift Table ■ ROOT Production Saw ■ CRESCENT 12" Slant Bed Jointer ■ TIMESAVER Mdl 237-2 Twin Head Wide Belt Sander ■ '97 GOMAD Mdl DFDA-4 Single Spindle Shaper ■ UNI-POINT 16" Radial Arm Saw

MOULDERS ■ '99 WADKIN Mdl XE-220 High Speed 6-Head Moulder w/'99 Mid Oregon Mdl LCF/14 High Speed Infeed Table (\$195,000 New) ■ '89 WEINIG 22A Hydromat High Speed 6-Head Moulder, 5" x 9" w/'99 Mid Oregon High Speed Infeed Table ■ DIEHL 5-Head Moulder, 4" x 12" ■ MATTISON Mdl 276 Moulder, 4-head, 4" x 6" ■ '99 ISET

Computerized Template Router, w/Dell Cad System ■ '99 WADKIN Mdl NNO-330 Silhouette Profile Grinder ■ '89 WEINIG R-931 Rondamat Profile Grinder ■ '89 WEINIG Mdl OMA970 Optical Head Balancer ■ MATTISON 237 Head Grinder ■ Heads and Tooling

GLUE-CLAMPS ■ '99 DOUCET Mdl 30-16.5-420-325 16.5' 30 Section Auto Glue Clamp ■ TAYLOR 16' 20 Section Glue Clamp

WOOD WASTE GRINDERS & AIR COMPRESSORS ■ '99 SULLAIR 10 hp Rotary Compressor ■ '01 QUINCY 2 Stage 10 hp Compressor ■ VAN AIRE Tanner Gas Dryer ■ '03 KELLOGG 25 hp 4 Stage Compressor ■ '89 KELLOGG 25 hp 4 Stage Compressor ■ '98 MONTGOMERY Mdl 26PM-H2F Hor Wood Hog w/'98 West Salem Vib Conveyor, 24" x 20', & MDI Metal Detector, 100 hp Soft Start ■ '98 SCHUTTE 26" Regrinder w/150 hp Soft Start ■ 2-'01 Wood Waste Belt Conveyor, 24" x 100' & 24' x 60'

2001 SELF CONTAINED DUST SYSTEM (Over \$600,000 Invested!) ■ '01 MAC 50,000 CFM Self Contained Dust Sys ■ '01 MAC 30,000 CFM Self Contained Dust Sys ■ '01 TORIT Dust Sys w/cyclone ■ '01 Dust Cyclone w/48" blower (top of Silo) ■ '01 FLAMEX Mdl FMZ4100 Fire Detecting & Suppression Sys ■ 2-'01 SQUARE D 2000 amp Mowr Control Panel

ROLLING STOCK/MISC EQPT ■ CLARK Mdl DPR-75K 15,000 lb Yard Lift ■ 2-CLARK Mdl C500Y580 8,000 lb Yard Lifts ■ MITSUBISHI Mdl FG35 8,000 lb Yard Lift ■ 2-'98 INTER Mdl 4700 DT-466E Delivery Trucks ■ 2-'89 INTER 16' Flat Bed Dump Delivery Trucks ■ CHEV C70 Single Axle 14' Dump ■ 80 Bays '01 INTERLAKE Pallet Racking 36" x 18' w/excess ladders, rollout conveyors

\$1.5M IN FINISHED & RAW INVENTORY (subject to prior sale). 100's of 1000's Lin Ft Finished Molding & Stock inc lg quantity of high end hardwoods - oak, cherry, maple, poplar

TERMS Full settlement must be made day of sale. Payment is in the form of cash, cashier's check, MC/VISA. A Bank letter guaranteeing payment must accompany all company & personal checks. Addition of Terms & Conditions, posted at the time of sale. Buyer's Premium in effect (discount of 3% w/cash, cashier's check, company check (w/a letter of guarantee) or via wire transfer)

Sale Manager: Brian D. Tragoser
Auctioneer: Brent Semple, 2656
716.741.9171

DFA

(Continued from Page A1)

milk prices, part of the result should be bigger milk checks for farmers.

However, some farmers after the meeting expressed their concern that their last milk check didn't reflect the recent rise in retail milk prices.

"Where's it all going?" one local Plain farmer said, referring to the increase of about 40 cents consumers are paying for milk in the store, while farm milk prices remain at mid-1970 levels.

Hanman updated the group on the Cooperatives Working Together (CWT) program.

This summer, CWT was scaled back from its original funding proposal of 18 cents per cwt, to 5 cents per cwt, for participating producers. About 70 percent of the nation's milk supply is participating, including DFA.

Hanman said the program received bids from about 2,550 farmers nationwide by Sept. 5, mostly from producers bidding to have their herd bought out. The bids will reviewed in the coming month. Herd removals should be completed by the end of October, Hanman said.

DFA is beginning to produce milk protein concentrates (MPCs) in New Mexico, which should allow the co-op to stop importing MPCs from other countries as it is now, Hanman said. DFA also imports cheese from New Zealand through its Borden division.