

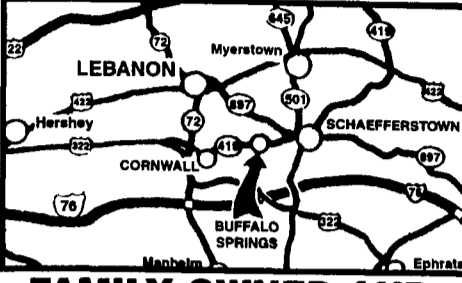
www.kbford.com

SPECIALIZING IN NEW & USED SUPER DUTY PICKUPS

Your Internet Connection

KELLER BROS.

(Buffalo Springs) Lebanon, PA
717-949-2000 or 1-800-363-2767
LEBANON COUNTY'S HEAVY DUTY TRUCK HQTRS.



FAMILY OWNED AND OPERATED FOR OVER 80 YEARS

Over 100 Clean Pre-Owned Vehicles In Stock At All Times!!

2000 FORD F250 CREW CAB XLT LONGBOX
 V10, AT, A/C, PW, PL, 1 Owner
\$21,995



1997 FORD F250 REG. CAB 4x4 XLT
 7.3 Turbo Diesel, 5 Spd., A/C, PW, PL, Clean - One Owner
\$18,995



2000 FORD F150 SUPER CAB 4x4
 Long Box, 1-Owner, 5.4 V8, AT, A/C, PW, PL, T.C. Cassette
\$20,995



2003 FORD F250 SUPER CAB XLT 4x4
 5.4 V8, AT, A/C, PW, PL, Shortbed, 13,000 Miles
\$28,355



2001 FORD ESCAPE XLS 4x4
 6 Cyl., AT, A/C, PW, PL, MoonRoof
\$15,570



1997 FORD F150 SUPER CAB XLT
 2WD, 4.6 V8, AT, A/C, PW, PL, 1-Owner
\$12,995



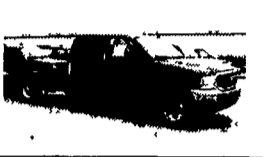
2000 JEEP GRAND CHEROKEE LTD
 V8, AT, A/C, PW, PL, Leather,
\$17,595



1998 FORD E350 CLUB WAGON
 15-Pass., 5.5 V-8, AT, Dual A/C, PW, PL,
\$13,995



NEW 2003 FORD F350 CREW CAB
 V10, AT, Full Power, 4x4 Cab & Chassis Only.
\$28,400



2001 FORD SPORT TRAC 4x4
 4.0L AT, A/C, PW, PL, Alloy Wheels, Sharp
 Only **\$20,773**



1994 ISUZU TROOPER
 4x4, V6, AT, A/C, PW, PL, Runs Great
\$4,695



2001 FORD F250 CREW CAB 4x4
 7.3 Diesel, XLT, AT, A/C, PW, PL
\$31,995



2002 FORD F350 XLT CREW CAB DUALY
 7.3 Powerstroke Diesel, 6-Spd., A/C, PW, PL, only 9,800 miles
\$34,975



2003 FORD F350 CREW CAB XLT
 4x4, 6.0 Turbo Diesel, AT, A/C, PW, PL, Long Wheel Base. Only 500 Miles, Like Brand New.
SAVE



2001 FORD F350 XL Dump Truck
 5.4 V8, 5-Spd., AM/FM/Stereo Only 7,000 Miles. Ready to Work
\$25,900



1998 FORD EXPEDITION 4X4 EDDIE BAUER
 V8, A/C, Full Power
\$12,795

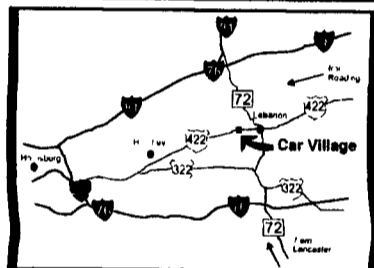


Nicest Trucks In the East • Nicest Trucks In the East • Nicest Trucks In the East • Nicest Trucks In the East • Nicest Trucks In the East • Nicest Trucks In the East

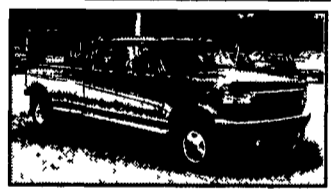
www.useddieseltruck.com
2300 W. CUMBERLAND ST. (Rt. 422) LEBANON, PA 17042
 (Across From Lebanon Valley Mall)

CAR VILLAGE

1-800-650-1420
717-274-2000



A Beauty 95 FORD F350 CREW CAB 4 Wheel Drive CENTURION CONVERSION
 Powerstroke Turbo Diesel, 5 Sp. manual. Only 54,000 Miles, Tow Pkg. Aluminum Wheels Look At This One.



Only 6,000 Miles 2002 FORD F250 SUPER CAB 4x4
 It's Perfect, Like New Remaining new Tr. Warranty 5.4 Triton V8 Auto Loaded XLT
Sale price \$25,900



DON'T BUY NEW LOOK AT THIS 2003 DODGE 2500 HEAVY DUTY CREW CAB
 Only 1,000 Miles, 24 Valve Cummins Turbo Diesel, Auto, Loaded Laramie SLT A Beauty and Only \$34,900



DIESEL CARGO VAN 2001 FORD F350 SUPER CARGO VAN
 Only 40,000 Miles, Remainder New Ford Warranty, Extended Length, Powerstroke Turbo Diesel, Auto, AC, Limited Slip Axle Means Great Traction. Tow Pkg.



5SP POWERSTROKE 98 FORD F250 REG. CAB 4x4
 You'll Like This One. Only 36,000 Miles, Powerstroke Turbo Diesel, 5Sp Manual Trans, A/C, Lock Out Hubs, Dual Tanks



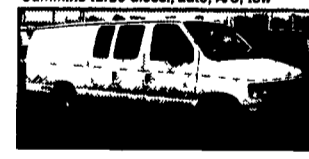
460 POWERHOUSE 96 Ford F250 SuperCab 4x4
 Strong 460 f.i. V8, AT, AC, comfortable 40/20/40 seat, tow pkg alloy wheels, very clean.



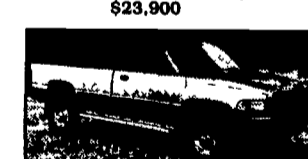
5 SP CUMMINS 95 DODGE 2500 CLUB CAB 4X4
 Cummins Turbo Diesel, 5 Sp., A/C, Tow Pkg. **\$13,900**



4x4 CUMMINS 2000 DODGE 2500
 Very nice Reg Cab, 24 Valve Cummins Turbo Diesel, Auto, Loaded LARAMIE SLT Only 51,000 Miles



98,900 2001 Dodge 2500 Quad Cab 4x4
 Very clean inside & out. 24 valve Cummins turbo diesel, auto, A/C, tow



98 DODGE 2500 QUAD CAB 4x4
 24 Valve Cummins Turbo Diesel, Auto, A/C, Laramie SLT Pkg., 46,000 Miles, Very Nice **\$23,900**



2000 FORD 350 SUPER CAB 4X4
 Power Stroke Turbo Diesel, Auto, A/C, Tow Pkg. Very Clean Sharp **\$26,900**



6 SP CUMMINS 2002 DODGE 2500 QUAD CAB 4X4
 Very Strong Truck, Loaded, Laramie SLT, A/C, Overhead compass, Remaining Fact. Warranty



02 GMC 4X4 DUMP
 Like New, Only 7,000 Miles, New GMC Warranty. 5.0 Litre Vortec V8 Auto, A/C, L-Pak Tool Box Roll Back Tarp **\$27,900**



2003 GMC 4500
 16 Foot Steel Flatbed Only 1,700 Miles, Like New with GMC Warranty, Duramax Diesel, Allison Auto, AC, Priced Real Right, **\$29,900**



2000 FORD 550 SUPER DUTY 4x4 CREW CAB
 Powerstroke Turbo Diesel, 5 Sp., A/C, Vinyl Seats & Floor. **\$25,900**



STAKE BODY 2001 CHEVY 3500
 12 FOOT BODY Great Truck Around The Farm, 6.0 Litre V8, Auto., A/C, Only 45,000 Miles, 4 Wheel Disc. Brakes, Locking Differential



4x4 Dump Truck 2000 DODGE 3500
 Cummins Turbo Diesel Auto, AC, Only 43,000 Miles, Very Clean Runs Strong.



Equipment Hauler 93 FORD F-450 SUPER DUTY ROLLBACK
 Just what you need, 16 Foot Jerr-Dan Bed, Brand new wood floor, Diesel Power, AC, Loaded XLT



650 FLATBED 2000 FORD SUPER DUTY
 Only 2,000 Miles, 26,000 GVW, Under CDL License, 3126 Cat., 6 Sp., 14 Ft. Stahl Body, Priced Right **\$31,900**



REAR LIFT GATE 97 FORD E-450 SUPER DUTY
 1 Owner Trade, Powerstroke Diesel, Auto., A/C, 17 Foot Aluminum Body



FARMERS FRIENDS 88 DODGE
 Only 60,000 Miles, 360 V8 Auto, 3yd Dump, Runs Well, **\$7,900**



550 CREW CAB
 4 Wheel Drive, Rare Find. Made For The Big Loads, Powerstroke Turbo Diesel, Auto, A/C, Eby Aluminum Bed, Gooseneck hitch



ENCLOSED UTILITY 95 FORD 450 SUPER DUTY 9 FOOT BODY
 Powerstroke Turbo Diesel, 5Sp, A/C, Only 39,000 Miles, Very Clean



Coming 95 Chevy 4x4 Mechanics Truck with Plow



SUPER CAB DUMP 2000 FORD F350
 A Very Desirable Truck, Clean, Only 65,000 Miles, V10, Auto., A/C, 9 Ft. Body, Insp. & Services **\$22,900**



550 SUPER CAB 4x4 2002 FORD SUPER DUTY
 Rare Find, Only 22,000 Miles, Powerstroke Turbo Diesel, 6 Sp., Loaded XLT, Steel Flatbed, Gooseneck & Class 3 Hitch



350 4 DOOR CHASSIS, 4 WHEEL DRIVE, 2001 FORD XLT
 Waiting for your Body, Only 19,000 Miles, Powerstroke Auto, A/C, Heavy, 11,500 GVW, Dual Ram Wheels.



ENCLOSED UTILITY 95 FORD 450 SUPER DUTY 9 FOOT BODY
 Powerstroke Turbo Diesel, 5Sp, A/C, Only 39,000 Miles, Very Clean

Nicest Trucks In the East • Nicest Trucks In the East • Nicest Trucks In the East • Nicest Trucks In the East • Nicest Trucks In the East • Nicest Trucks In the East