

15 CONSTRUCTION EQUIPMENT

Air compressor. Grimmer Schmidt mdl 175CFM, gas, runs great \$2,000. Multi-quip mdl 130CFM dsl, runs great, \$3,500. Rent or buy Heavy Equip Loader Parts, Grantville, PA (717)469-0039

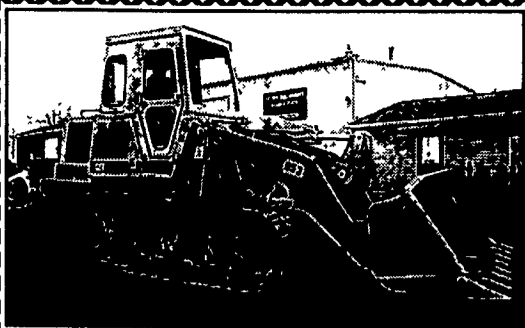
Forklift-AC mdl FRD70-24-2PS, 7000 lb lift, dsl, air tires, \$2,500/obo. AC 706C 6000 lb, dsl, air tires, \$8,000. Cat RC60, 6000lb, w/cab, air tires, \$12,000. Rent or Buy. HeavyEquip Loader Parts, Grantville, Pa, (717)469-0039

1500# Pwr Drive, walk-behind pallet stacker, exc cond, battery operated, 120" lift, \$2,000 (717)284-1035

5 ton Mono-Rail Hoist, 61' long Chisholm-Moore Hoist, exc cond. only \$3,400; (16) steel bar joists 14" high, 24' long, gd cond only \$300 for all (610)334-3141

Case 580 CK, 2 bkt encloser, 5k; JD 350B loader ROPS, bkt & fork carriage 8k; GMC 6500 dump, A/B, 5.2, inpsd \$2,500 (610)913-7009

Ditch Witch walk-behind 1500 electric start exc cond BO 908-730-8100 Hunterdon nights



Caterpillar 953LGP Loader (3) Avail \$30,000 & UP

Heavy Equipment Loader Parts
Grantville, PA
(717) 469-0039



1987 Hyster 5,000# cap. forklift, pneumatic tires, monotrol transmission, gas engine, runs good. \$4,800
Many Other Forklifts In Stock,
Ready for Delivery!
CALL TODAY: 1-877-570-4751

Skid Mounted Generator/Compressor

Hesco mobil power unit \$2200.00
Kohler 4 cycle gas engine. Runs off your tank or portable 220 volt electrical outlet & 110 volt outlet
Dual 3/4 hp air compressor/dryer
Have 2 units for sale
Call Jim or Garry for details @
814/627-4671



1971 John Deere 450B crawler loader R.O.P.S. U/C-@60%, works good . \$8,900



Hyster H50XL fork lift 5000 lb. lift, side shift, 3 stage mast, air, tires, L.P. P.S., auto, works good . \$4,900



1988 Komatsu D21-A 6 way Dozer, 50% U/C, R.O.P.S., 3218 Hrs., Very Nice Firm \$12,500

Dull Equipment Co., Inc.
1002 E. 201 St. Newberry, PA 17073
Sales, Service and Parts
717-949-1155
FOR MORE INFO VISIT OUR WEBSITE

BUYING & SELLING USED CONSTRUCTION EQUIPMENT, NEW & USED PARTS & ATTACHMENTS CALL

H.E.L.P., INC.
(717) 469-0039
FAX (717) 469-7679

Specializing In Caterpillar Parts also available for Case, Fiat, IHC, Komatsu, Deere, Etc.

ALL PARTS AT DISCOUNT PRICES! **PARTS LOCATING SERVICES**

Call Us For Your Parts & Service Manual Needs

HEAVY EQUIPMENT LOADER PARTS, INC.
10070 Allentown Blvd., Grantville, PA 17028



WAY-BRITE FARMS have taken over Danco's Wagon and Farm Equipment lines.

Call us for your **GROVE - JERR DAN - DANCO PARTS**

Clutches - Sprockets - Shafts
Cross Conveyor Belts & Chains
Apron Chains - Worm Gears
Forage Box Roofs - Spindles & Hubs
6 Lug, Chevy Wheels

WAY-BRITE FARMS GROVE & DANCO

WAGONS
AGRICULTURAL EQUIPMENT & PARTS

David P Waybright
837 Mason Dixon Road
Gettysburg, PA 17325
Phone (717) 334-5492 Fax (717) 334-6147

JERRE MARTIN REPAIR

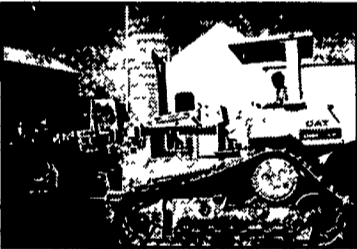
391 N. Farmersville Rd., Ephrata, PA 17522

(Just minutes off RT 222)

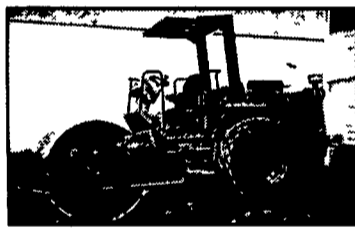
717-859-3283 Toll Free 877-317-5348

Celebrating Our 20th Year 1983-2003

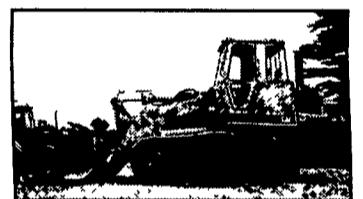
Celebrating Our 20th Year 1983-2003



Flat Allis FL5 Crawler Loader, 4N1 Bkt., Rebuilt Eng. \$13,500



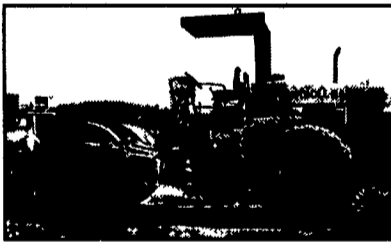
'93 Cat 320N Excavator, 8.5' Transport Width, Quick Coupler \$42,000



JD 350 crawler loader, new tracks, good cond. \$7,000



IR SD100D Roller \$32,000



JD 570A, Excellent \$16,200



Komatsu D21S Crawler Loader (Late Model) \$13,000



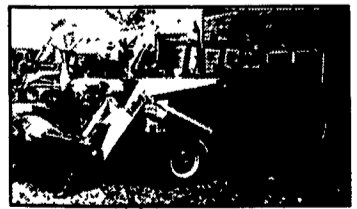
Kubota L2250 w/LA450 loader, 60" mid-mount finish mower, 4x4 \$10,500



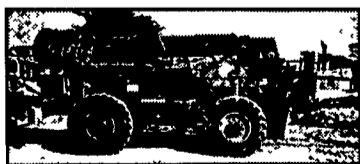
JD 544 Loader \$12,500



DJB D25 Articulated Dump Truck \$29,000



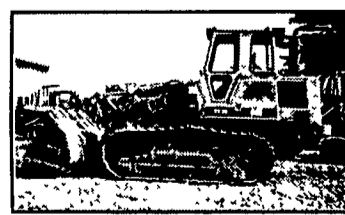
MF 165 Multi-Power w/Loader \$55,000



Lull 1044, 10,000 Lb., 42Ft. w/Outriggers, JD Dsl. \$23,500



'95 JD 450G, 6-Way Blade, 5,100 Hrs. \$25,000



'99 Cat 226 skid loader \$15,000
'97 Hamm 2420 roller, 84" drum drive \$29,000

Sales Service Rental Repairs

WE ARE BUYERS FOR LATE MODEL CONSTRUCTION EQUIPMENT NEEDING REPAIRS

Road Service Available Now, Custom Repairs On All Makes Construction Equipment