

USED EQUIPMENT SPECIALS



MF 6270-2C, 99 HP, DynaShuttle Trans., 1360 Hrs., 2000, Ex. Cond. #05585
\$36,500



MF 8140-4C, 145 HP, DynaShuttle Trans., 1998, 977 Hrs. #05793
\$48,900



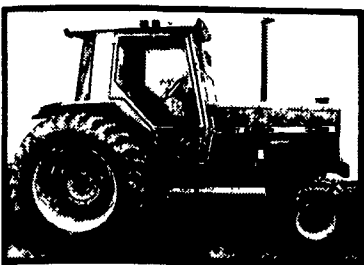
White 8310-4C, 125 HP, DynaShuttle Trans., 1694 Hrs., 1998, w/Warranty #05787
\$41,900



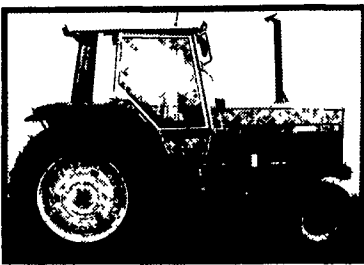
MF 4243-2C, 75 HP, 2000, 12x4 Trans, 1412 Hours, #05670
\$25,500



MF 399-4, 99 HP Diesel, 12x4 Trans., 1986, 1670 Hrs. #05626
\$18,900



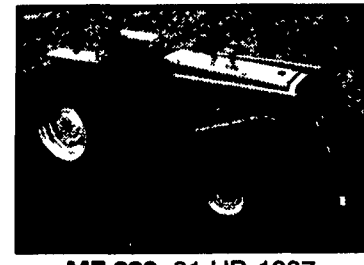
MF 3090-2, 95 HP Diesel, 12x4 Trans., 2329 Hrs., 1986 #05671
\$21,000



MF 3140-2, 115 HP, 4 Speed Trans., 1993, 4694 Hrs. #05790
\$24,900



MF 231, 38 HP, 8x2 Trans., 484 Hrs., 1998, Mint Condition #05827
\$11,500



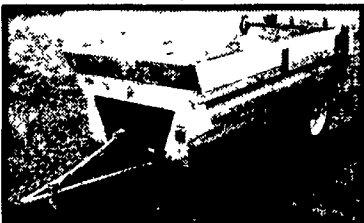
MF 383, 81 HP, 1997, 236 Loader, 2099 Hrs., w/MF 236 Loader #05772
\$15,900



MF 165, 52 HP, 8x2 Trans., 2497 Hrs. #05653
\$5,900



Demo Artsway 5310 No Till Drill, 10 Ft. Width, w/Grass Seed Box, #05507
\$17,800 - \$17,200



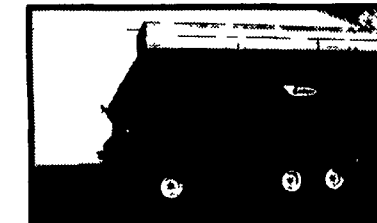
New Idea 3622 Spreader 225 Bu., Top Beater, Litter Pan, 12" Wd. Sides, #900149
\$6,500



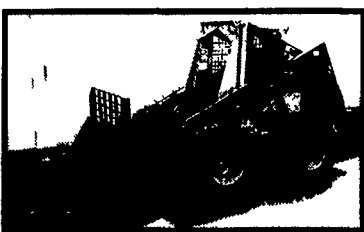
Gehl 315 Manure Spreader, Tandem Axle, #05549
\$3,900



Gehl 920 Forage Box, 16 Ft., 3 Beater, Roof, 10 T Single Axle, #04947
\$3,100



Badger Forage Box, 12-Ton Gear, 16 Ft., 3 Beaters, Roof, #04947
\$3,500



NH L785, 57 HP Diesel, w/Bucket, 1994, 2 Speed, 4026 Hrs., #05145
\$11,500



Gehl 4625, 44 HP, 65" Bucket, 1996, T Bar Control, #05732
\$10,800



Gehl 4835 SXT, 57 HP Diesel, 68" Bucket, 1998 #05732
\$10,400



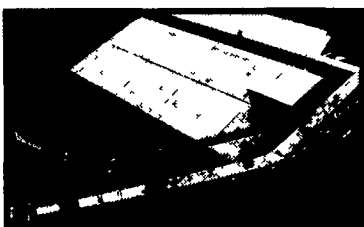
Gehl 5635 SX, 60 HP, 72" Bucket, 3136 Hrs., Rebuilt Engine, Case Hd Ctrls., #04169
\$14,900



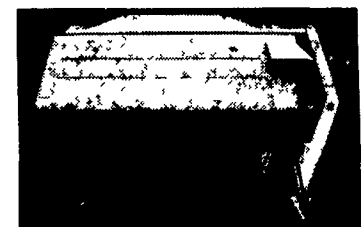
Gehl 5635 DXT, 60 HP, 72" Bucket, 2001, 961 Hours, #05553
\$16,900



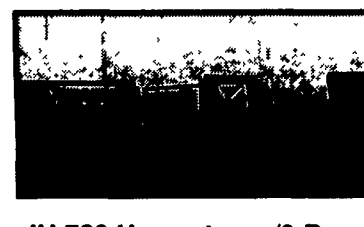
Gehl 8335 Mixer Feeder, 335 cu. ft., Flip-Up Discharge #05313
\$13,900



Gehl 2365 Disc Conditioner, 10'3" Cut, #05145
\$12,500



Gehl 2360 Disc Conditioner, 10'3" Cut, #05690
\$8,900



IH 720 Harvester, w/2-Row Corn Head & 6 Ft. Hay Head #05524
\$3,875



Gehl 125 Grinder Mixer, 100 Bushel, #04726
\$6,350

VERTICAL MIX

MODELS 3000, 4100 & 5600 IN STOCK AVAILABLE FOR DEMO

800 & 1100 cu/ft. Models Available

Features:

- 5 year pro-rated warranty on gear box
- 3 year warranty on Digistar Scales
- Stainless steel conveyor trough
- Extra heavy duty frame
- 46" wide door
- 4 - 16 ply tires
- Epoxy paint
- Excellent Clean Out
- Made from North American Steel
- Easy loading with skid loader



Call Us For Demo and Pricing

| MODEL | 3000 | 4100 | 5600 | 6700 |
|------------------|---------|---------|----------|-----------|
| Capacity cu/ft | 300 | 410 | 560 | 670 |
| Overall Height | 82" | 93" | 100" | 94" |
| Overall Length | 192" | 216" | 216" | 292" |
| Discharge Height | 22"-48" | 28"-54" | 28"-54" | 26" |
| Conveyor Width | 36" | 36" | 36" | Dual 103" |
| Auger Flites | 1/2" | 5/8" | 5/8" | 5/8" |
| Side Wall | 3/16" | 1/4" | 1/4" | 1/4" |
| Floor Thickness | 1/2" | 3/4" | 3/4" | 3/4" |
| Horsepower | 60 min | 70 min | 80 min | 90 min |
| 2 speed gear box | N/A | option | standard | standard |
| Weight (Empty) | 6,290 | 8,790 | 9,560 | 15,840 |

Farmco Cattle Feeders

2-Wheel Models In Stock

- 16 ft. \$725
- 20 ft. \$785
- 24 ft. \$875



Model 424
With Front Dolly Wheels
24 ft. Long

Sale Price \$1,145

Round Bale Feeders Also Available

Headlock Units Available
16 & 20 Foot Models In Stock

Call For Prices On Different Sizes And Styles



LEBANON VALLEY IMPLEMENT COMPANY, INC.

700 EAST LINDEN STREET, RICHLAND, PA 17087

Monday - Friday 7:30-5
Saturday 7:30-12

717-866-7518

EMAIL: sales@lebanonvalleyimplement.com
See our Equipment at: www.ironweb.com/lebanonvalley

