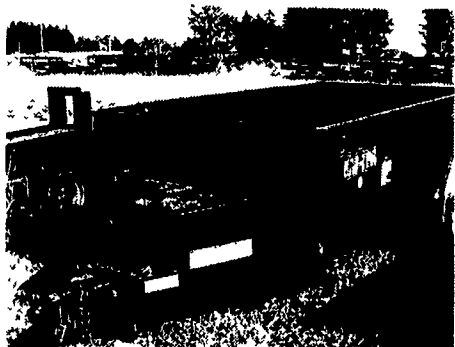


Sales, Service & Parts For  
**AGCO Allis, Kubota, Long,  
 New Idea, Hesston, Bush Hog,  
 Befco & Woods, Mustang,  
 Richardton, Krone Niemeyer**

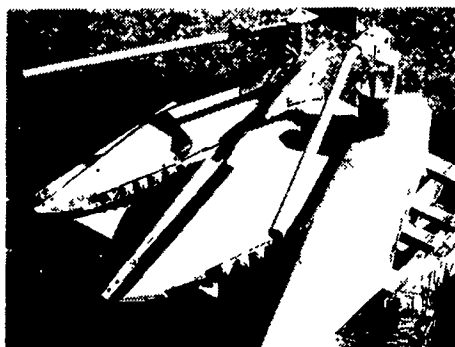
# MARSHALL MACHINERY, INC.

Rt. 652, Midway Between Indian Orchard and Beach Lake  
 RR4, HONESDALE, PA 18431 (570) 729-7117  
 www.marshall-machinery.com

**WE SHIP PARTS BY  
 FEDERAL EXPRESS DAILY  
 Hours; 8-5 Mon.-Sat.**



**2003 Load Trail 5x10  
 Single axle dump  
 Only \$2,895**



**Several NH  
 824 Heads  
 CALL**



**IH 574 Hydro Works Gd  
 Looks Ugly  
 \$3,975**



## TRACTORS

- AC G
- AC D-19G
- AC 180D
- AC 185D
- AC 6080
- Agco 5670 w/Ldr \*
- Case VAL Vac
- CIH CX90 4WD Ldr CAH
- CIH 485
- CIH 5220 4WD P Shift w/Ldr
- CIH 5140 2WD cab
- Farmall "C". Super C
- Farmall Super H
- Farmall M
- Farmall 140 w/Mower
- Farmall 140 w/Ldr & fast hitch
- Ford 5610 2WD Ldr & Cab
- Ford 8N
- Ford 641
- Ford 740 NFE
- Ford 2000
- Ford 2910
- Ford 3000 w/snowplow. 670 Hrs
- Ford 4610
- Ford 7000 dsl
- Ford 7610
- Ford 7700 w/Cab
- (2) Ford 7710 4WD CAH
- Ford 7740 w/Ldr 1
- IH 966 w/Cab
- JD 40-5
- JD 1520 gas
- JD 2640 w/cult dresser
- JD 2350 w/Ldr
- JD 2520 side console
- JD 2840
- Kubota M4050
- Long 2360 \*
- MF 25
- MF 231 w/Ldr
- MF 245 Dsl
- MF 285
- Oliver 1955 dsl
- Same Falcon
- White 2-85 4WD Cab

## SALVAGE YARD

- AC B. C. CA. G. WD. WD45. D14. 15. 17. 19. 170. 185. 190. 200. 5040 50 6080. 4WD 7010 7040. 7580 7030 7000
- CASE SC Vac 200 320 530 630 995 2090
- FARMALL/INT A. C. H. M. B414 200. 300 350 400. 404 444 460. 504. 560 606. 656. 706 806. 826 856. 1466 FARMALL CUB
- FORD 8N 9N. NAA. 531. 600. 770. 801. 1910. 2000. 4000. 5000. 8600
- JOHN DEERE A. B. M. MT. 50. 60. 350. 630. 730. 2010. 3010. 3020. 4010. 4020. etc
- M/F 20. 30. 35. 65. 85. 90 135. 165. 175 TO 20 TO 35
- OLIVER 70. 77. 770. 1650 1750 1950 etc

## INDUSTRIAL EQUIPMENT

- AC H3. H4. HD3. 4. 650. 652. 655
- IH 150 J/D 440. 2010. etc IHC 756

## FARM EQUIPMENT

- Haybines. Discbines. Plows. Moldboards. Sickle Bars. Tedders. Manure Spreaders. etc.
- Also Available!
- "New Manifolds & Radiators"
- MOTORS**
- GOOD RUNNING MOTORS
- SHORT BLOCKS LONG
- BLOCKS. USED OR REMANED
- CYLINDER HEADS & CRANK-SHAFTS.
- MISC USED TRACTOR CHAINS
- HYD CYLINDERS
- We Also Have A Vast Assortment
- Of Wheel Weights
- Free Parts Locator Service
- Call 8 AM - 5 PM
- Monday thru Saturday
- We Will Be Glad To Serve
- All Your Parts Needs
- Cash Paid For Parts Tractors

## COMPACT TRACTORS

- Ford 1920
- Ford 2120 w/Ldr
- IH 274 w/Cult
- JD 430 Dsl
- Kubota B21TLB
- Kubota BX 2200 w/Ldr & mower
- Kubota B1550 w/Ldr
- Kubota B6100 4WD
- Kubota B8200 HST w/Ldr
- Kubota F 3060 w/grass catcher
- Kubota G-1800 w/Mower & Catcher
- Kubota G 6200 HST w/mower
- Kubota L35 P/B
- Kubota L185 w/blower
- Kubota L2050
- Kubota L 2250 w/Ldr
- NH TC 40D w/Ldr

## DISCS

- AC 2300 disk s
- Assorted 3 pt Disc Harrows
- Assort 8 -16 Bush Hog IHC JD Kewanee
- Athens 7 Offset Disc
- Bush Hog 10 Offset Disc
- Bush Hog 10' Disc w/3 Pt Hitch
- Case 9 Offset
- JD BW 10'
- Kewanee 3 Disc w/Wings
- MF 40 Leveling Disk
- Miller 12 ft & 14' Offset Disc
- Offset 8 Disc

## SQUARE BALERS

- NH 273 w/Thrower
- NH 282
- (1) NH 315 w/Thrower
- NH 316 w/Thrower
- NH 565 w/Thrower
- NH 570 w/Thrower

## ROUND BALERS

- Hesston 540
- NH 630 \*
- NI 484
- NI 4844
- (2) NI 4845

## TREE SPADES

- Caretree 20'
- Caretree 40" w/s mount
- Caretree 501 20 w/s mount

## ELEVATORS

- 4 . 5' . 6 . 8' Grain Augers
- Belt Conveyors
- NH 155 Elevator

## SICKLEBAR MOWERS

- Several Ford 501
- JD #10
- IH 100
- JD 110
- JD 350 3pt
- IH 120. 3 pt
- AC 82S
- AC 80R
- IH Cub
- IH Fast hitch
- 50+ assorted mowers

## INDUSTRIAL

- Alamo 3 pt Sickle Flail
- Caretree 24 tree spade
- (1) Caretree 30' tree spade
- Case W252 Vib Roller
- Cat 910 Payloader
- Komatsu D31 Crawler Ldr
- JD 450C Dozer w/6-Way
- JD 355D Loader
- JD 1010G TLB
- Kubota R 420 Wheel Loader
- Stone 54 Pad Foot Roller
- 6 3 Pt Sweeper
- IH 584 w/side mower
- IH 895 w/side mower
- York Walk Behind Broom
- (2) Skidsteer Rock Hounds

## WAGONS & GRAIN CARTS

- Several Wooden Hay Wagons
- Various Running Gears
- New assorted 18 steel sided racks w/running gears 20' steel sided bale rack w/tandem running gear
- Round bale wagons
- (3) Gehl Forage Boxes w/Tandem Gear
- (3) Meyers 14 Forage Boxes

## FORAGE WAGONS

- Gehl
- IH tandem gear. 3btr
- Richardton 1200 Dump Wagon

## GRAVITY WAGONS

- E-Z Flow 220 w/Grain Wagon
- Kilbros 250 Grain Wagons
- Knoedler Feeder Wagon

## HAYBINES/DISCBINES

- CIH 8340
- NH 472
- NH 474
- NH 489
- NH 5209
- NI 5212

## FORAGE BLOWERS

- Farmhand F89B
- Gehl FB1560
- NH 28

## MANURE EQUIPMENT

- Assorted Basin & Lagoon Liquid Manure Pumps
- Dearborn 75BU ground drive 425 tandem axle box spreader 309 Scavenger
- JD H grd drive
- MF 205 130
- NH 679
- NI 3732

## LOADERS

- AC 415 460 (to fit 60 series)
- AC 500
- Farm King 84-380
- JD 100
- Large Assortment of Used Front Loaders for Most Makes of Tractors

## SPRAYERS

- BCI 300 gal tank on trailer
- Century 1000 gallon tandem axle sprayer
- Century 300 gal
- Hardt 200 gal 3 pt with boom
- Kinkelder 3P-400 Sprayer
- 500 gal trailer crop sprayers
- 500 gal Precision Tandem axle Lo-Pro 46 Boom
- 200 & 300 Gallon Sprayers 3pt & Trailer
- Several Meyers 3pt & Tk mt

## SIDE RAKES & TEDDERS

- Fahr KH22 2 Star Tedder
- Fahr 6 star tedder
- Fahr kh 500 tedder
- (2) Kuhn 4 Star Tedders
- NH 258 Several NH 256 Several

## CULTPACKERS & SEEDERS

- Brillion 5 packer seeder
- Brillion 8 packer seeder
- Brillion 9 ft single roll & double roll
- (2) Brillion 10 packer seeders
- Holland 1 & 2 row transplanter 3 pt pull
- Holland 2 seat 3 Pt 1 Row Transplanter
- 1&2 Row Mechanical Transplanters 3 pt pull type
- JD 6 grain drill

## SKID STEERS

- Altec stump grinder
- Gehl SL6625
- JD 250
- NH 785
- NH L5 190
- (1) 60 Rock Hound

## FORAGE HARVESTERS

- AC Gleaner dsl & F dsl used combines asst heads
- Hesston/Gleaner - 7150 7165

## FORAGE HARVESTER HEADS

- Hesston 1R 2R
- JD 2R N&W
- NH 824 2 Row Corn Head

## PLOWS w/SPRING RESET

- ASST 1 2 3 OR 4X 3 Pt Plows
- Ford 101 3X Plow
- Ford 3x 151 w/Spring Resets Plow on Land Hitch
- Int 311 Trip 14 Plow
- IHC 720 5X Auto Reset
- IH 4x3 Pt
- IH 720A 4 & H5 Bottom Reset w/Hillside Hitch
- Int 710 6X 16 Btm
- Int 720 4X Reset w/Hillside Hitch
- Int 710 6x18 Btm w/Side Hill Hitch
- Kverneland 4X Spring Reset Semi Mt
- Kverneland 4x2 Bottom Plow

## MISCELLANEOUS

- Dunham 10 Shank Chisel High Clear Agri Metal Bedding chopper
- (2) Anderson Rock Picker PTO Drive
- Asst Used 3pt finish mowers
- Assorted 5 6 & 7 Pull Type Rotary Mowers
- Badger 3 pt hyd driven tree weeder
- Belco Bush Hog & Woods finish mowers 4 5 6 7 7 1/2
- Bervac Front Snow Blower
- Brillion 12' Cultmulcher
- Bush Hog 6 finish mower
- Bush Hog 10 pull type brush hog
- Bush Hog 306 3 pt mt
- Bush Hog 12 Brush Hog
- Cargo Winch for Case 310 350
- Degelman Rockpicker PTO Drive
- Dual Wheels In Various Sizes
- Farmhand F880C Tubgrinder
- Harvestore Hercules unloader
- Holland 2R Trailer Transplanter
- Holland Water Wheel Transplanter
- Howse 10 brush hog
- IH 9 snowblower
- JD Hyd Hay Thrower
- (2) 2 row multivator
- 8 row multivator
- Lg Assortment 3 Pt rotary type mowers
- McCormick 10 20 Tractor
- M&W rd bale unroller
- Papac Running Gear w/Brakes
- PTO Irrigation Pump
- Shut' Hi Dump Rock Picker
- Skinner No Till Tree Transplanter
- Stoltz/Bus Wet Line Spreader
- Stone J. Lampers & Power Frowcl
- Westgo Rock Picker
- Winpower 35/20 PTO Gen
- (2) Wic Round Bale Unrollers
- Woods 306 Finish Mower
- Woods 5 Finish mower
- Woods 72 pull type brush hog
- 3 pt flail mowers
- 3pt rear scraper blades assorted sizes
- 6 8 10 lime & fertilizer spreaders

## TINKERS ROW

- All Items Need Some Repair To Be Field Ready
- Martin Equalizer Manure Loader \$1 495
- AC 745 3 4 Yard Articulated
- Pay Loader w/Cab has Engine Problems \$13 750 or less
- AC B Tractor Collector Vintage \$995
- IM 140 w/Ld & /h \$2 750

*\*This machine is in VG cond or has less than 1000 hrs of use*

## CORN PLANTERS

- AC 2 Row
- (2) IH 2 Row
- (3) JD 2 Row
- Cole 2 Row
- MF 2 Row
- DA 385 4 Row
- AC 4 Row No Till AC 8R AC 330 6R No-Till
- (2) Ford 309 2R
- Dry Fertilizer Post Eung Boxes
- Very Good Condition

## GRINDER MIXERS

- Bearcat 1250
- CIH 1250 w/hyd
- Gehl 170 Roller/Mixer
- Farmhand 817

## CHIPPERS



**Many Chippers  
 In Stock,  
 Call & Ask For  
 "Chipper Joe"**