

10 FARM EQUIPMENT

1997 JD 915 Grainhead, like new only 300 Ac, (2) JD 915 Grainheads, \$7,500 (7) JD 643 Corn-heads and More! Zeisloft Eq (800)919-3322

IH Axial Flo Combines, 1440, 1460, 1660 Call Zeisloft Eq 4 8% fin (800)919-3322

MM G1000 Vista, 3pt, 540/1000 shaft, dual remotes. 1957 460 diesel, 2 pt, wts, vg cond. Farmall M. 570-524-9521 or 570-524-2436

750 Case Loader, Ex cond (302)730-4280 leave message

NH 718 harvester w/822 NH head, elec. controls, ex. cond., field ready, \$2,500. 304-897-6384

New Demco sprayer 300 gal manual fold booms \$6000. A O Smith roller mill, good shape \$500. 610-987-3377

Corn Planter JD 3 pt, 2R, 246/247 Good Cond. \$1,375 (610)845-7664

Disc Deerborn, 3pt, 6', \$475; Ridgid Pipe Vise \$150 (610)845-7664

Fox 5644 SP, 4wd harvester, 3RN head, good shape. (570)769-8906

JD 455 compact tractor, dsl, 47" 2-stage snow blower, cab, chains, \$10,000 610-286-9179

JD 7000 conservation 6RN planter, frame mtd coulters, 2 set of closing wheels & meters + insect, \$3,500 obo 410-531-6261

Tyler fertilizer spreader, \$1750 Meyers tandem self-unloading wagon \$1450 1950 Oliver cab, \$950 717-258-4624 eves

Mo-Co 930, good cond, field ready 570-398-2688

(2) NI 323 IR corn pickers, good cond 570 398-1613

Vermeer 107 NoTill Grain Drill, 10 1/2' w, 2 lg seed boxes & 1 sm grass box, 120 Ac on new discs & cutters, field ready, \$6,500 (410)756-6663 or (410)259-1487

JD 2750 w/146 ldr, 80 hp, 4600 hrs, w/canopy \$14,800 (717)687-8266

'94 NH 315 discbine, good rolls, needs cutter bar work, \$2,500 NH 890 7-1/2' hay head attach \$150 JD 7000 FWD fenders w/brackets, \$500 814-766-3342

Oliver 88, 13" rims, Runs Good, \$2,000 (215)257-5887

NH 1431 discbine, ex shape, draw bar hitch, \$12,900. (610)286-6047

JD 8320 4x4, 300 hrs, \$98,000; JD 7810 4x4, pwr quad, LH reverser, 740 loader, \$62,000; Richardton 700 dump wagon, \$3,900; IH 881 chopper w/7' grasshead, \$3,300; (717)821-0929

5 Ton metal feed bin 1200 BU Speedy corncrib (570)356-7403

Sunflower 5032, 22ft field cultivator, 3R's of tine, packer hitch & rear hydraulic, \$8500 obo 717-587-2943

NH 276 baler w/thrower, ex, \$2875 JD 670 hay rake, \$1275 Pequea PTO tedder, \$875 610-944-9134

JD 5320 w/canopy, 541 loader, (200 hrs), Land-pride 8A hydraulic blade, JD rotary MX5, all for \$30,500. 908-754-6678

10 Ply 23 1-26 combine tires & wheels, \$250/ea. JD 3pt, 7ft blade, \$175 6 sets of rolling cultivator shields, \$500 31 Danish tines w/shovels, \$85 (717)534-1253

Small Hesston 110 SP haybine, good cond, \$575 Gravity bin wagon, \$475 MF 699 diesel, 4WD, cab & new tires, \$9800 (717)534-1253

Hay Equip for Sale JD 926 Moco Discbine 2yrs old; Hyd Tilt, Hyd, Swing, Light Pkg; NH 1069 Stack Wagon, NH 575 Baler, 2 yrs old, Hyd Hitch, Hyd Pick up, Hyd Bale Chamber, Qtr turn shute; Steffin Hay Grapple, Cat 8000# tow mtr, w/27' Mast; (717)684-5563

Martin's Tractor Parts

866 Greenspring Rd, Newville, PA 17241

Call (717) 776-7542 or 6057 (717) 776-7327 Fax for detailed information

MON-FRI 8-5 No Sunday Calls SAT 8-12 Will Ship UPS

TRACTORS FOR SALE

JD 4620 w/Roll Guard, New Paint \$8,500
IH 856 \$6,500
Oliver 77 \$1,900 JD 7020 \$7,000
Oliver 1555 \$4,500 JD 2840 \$8,500

Distributor for Total Seal Piston Rings & High Capacity Remanf. Clutches,

Water Pumps, Cab Kits, Seats. A & I Products for WFE, 3 pt. Parts, Belts, Etc.

We now have Pix belts and electrical supplies

We Customize Hyd Hoses

Recent Arrivals For Salvage

Most Makes and Models Have Large Selection This is a partial listing.

IH Super H; AC 8050; IH 544; Oliver 77; IH 806; IH 385; Oliver 550; Oliver 1550; Oliver 1650; Oliver 1850; Oliver 1855; AC 175; IHSuper C; IH 200; IH 856; Case VAC; IH 424; JD 2020; Oliver 2150; JD 4230; JD 4320, Oliver 1855; Ford 3000; Ford 2000; Case 630; Case 430; Oliver 66; AC D17; IH 1466; IH 766; 4020; DC 7060; Case VAC; IH 5088; JD 2020; JD 7020; IH 674; IH 1086; IH 756;

Positively No Out-Of-State Checks

This Week's Special



1988 JD 4050, PS Trans., 466T Motor, Cab, Air, Sharp \$26,500

BUY • SELL • TRADE

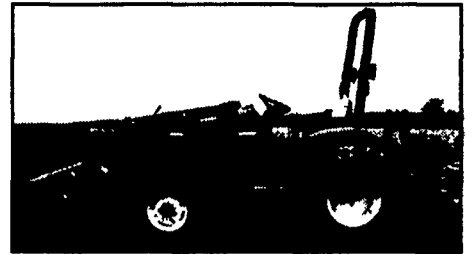
JD 4455 cab, 4x4, PS trans, 2 hyd, nice, 6,580 hrs \$31,400
JD 4250 4x4, cab, air, PS trans, new radial tires, 1988 \$30,000
JD 4650 cab, 4x4, 15 spd., P/S, 466T, 1988 \$26,500
JD 4050 cab, air, 15 spd., 4x4, 6823 hrs, 1987 \$26,000
JD 4650 SGB, 4x4, new paint & radial tires \$25,000
JD 6400, cab, air, 4x4, 20 spd, PQ w/rev, 5504 hrs, 1994 \$24,000
JD 4630, PS, trans., working air, 1997 \$14,900
JD 2650 same 2555, cab, air, 5120 hrs, 2 hyd. \$14,900
JD 2350 ind. PTO hydro steering new tires 3536 Hrs. \$10,500
Case 1845C skid klr w/teeth bucket & aux hyd. \$9,000
JD 2630 new 38" tires, paint, 4260 hrs, nice. \$8,000
JD 1630 (same as 2240) cab, hi lo, ind PTO, 50 hp, 1979 \$7,900
New Woods 2560 mowing machine w/60" deck \$7,600
JD 2130, ind PTO, SR trans, 2 hyd., \$7,100
JD 1120 ind PTO, new paint, good \$6,000
AC 180 dsl WF, 2 hyd, 3900 hrs, orig \$5,500
JD 4255, cab, air, 4x4, 15 spd., ps trans, 2 hyd. \$28,900
JD factory wide front for 3020 thru 4020, new \$1,375
JD yellow roof roll bars, fits 2510 - 4020's new \$1,060 ea.
6 1/2x10' big square bale feeders in stock \$875
JD 506 3 pt rotary cutter, like new \$800

Pequea • Woods • Country
Boy Gravity Bins • JD Front & Rear Weights •
J&L Hay savers • Farmco Feeders & Wagons

Reiff Farm Service

275 Goodhart Road, Shippensburg, PA 17257
Interstate 81, Exit 29, 174 East, Goodhart Rd Right

Financing & Trucking Available
(717) 532-8601



JD 4300 4WD, w/ldr., Shuttle, 500 hrs., excellent .. \$14,500
JD 2750, 2WD, 4100 hrs., excellent \$12,500
JD 970 4WD, w/ldr., 1500 hrs., nice \$12,500
JD 2440, 3500 hrs. \$7,500
IH 454 1400 hrs., VG \$5,500
New Holland 2120, 4WD, w/ldr., 700 hrs., like new. \$15,000
Ford 2110 4WD, w/ldr., 1500 hrs., nice. \$10,500
Ford 4610 II 1500 hrs., EX. \$10,500
Ford 4000 SU, w/ldr., gas, very good \$7,500
Ford 3000, gas, 8 spd., ps., **SOLD** \$5,000
Ford 3000, gas, 8 spd., ps., 1400 orig. hrs. \$5,500
Ford TC 33D 4WD, w/loader hydro, 750 hrs. \$13,500
Kubota L2850 GST, 4WD, w/Snow Blade, 150 hrs. . \$8,000
Kubota L4150 4WD, TLD, 250 hrs. \$16,000
Kubota M7500 low profile, orchard fenders, 70 hp., 3700 hrs., clean \$6,500
Toro 345 w/72" deck, cab, gas, 1400 hrs. \$4,250
Farmall M restored, excellent CALL
Farmall 560 diesel, clean CALL
International 350 utility, nice. CALL

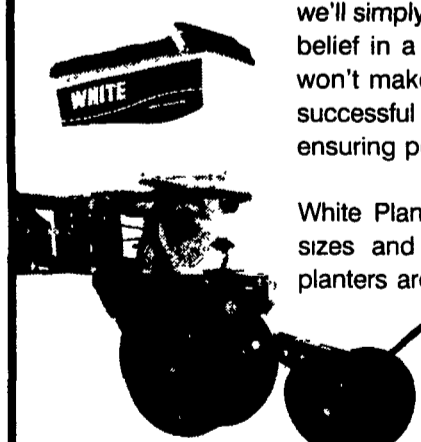
MANY OTHER FARMALLS AVAILABLE
OTHERS AVAILABLE
CALL SCOTT BOND
325 County Rd. 579 Ringoes, N.J.
908-782-7658

ATTENTION: Planter Owners



Simple, accurate, zero maintenance.

Every White Planter is engineered from the ground up to provide outstanding quality, simplicity, accuracy, gentle handling and visibility of the seed. So, when you purchase a White Planter, if you're required to replace parts in the metering system within the first three years, we'll simply give you the parts at no charge. That's belief in a product and a claim the competition won't make. This represents all of the features a successful farmer demands from a new planter . . . ensuring perfect seed placement across the field.



White Planters are available in a wide variety of sizes and narrow transport widths. And these planters are backed with the superior knowledge, support and service of a White Planter Dealer. Visit your local White Planter Dealer for details.

Meter guarantee applies to 8000 Series Planters Does not include row unit assembly, frames or attachments



WHITE
PLANTERS

SIMPLY ADVANCED



See Your
AGCO White
Dealer Listed
Below.

Delaware

Georgetown
Baxter Farms

Maryland

Dayton
J.D. Mullinix

Pennsylvania

Airville
Farmers Equipment & Supply, Inc.

Bechtelsville
Miller Equipment

Bethel
Zimmerman's Farm Service

Glen Rock
Wertz Farm & Power Equip.

Greencastle
Meyers Implements

Klingerstown
Stanley's Farm Service

Lebanon
Umberger's of Fontana

Oakland Mills
Peoples Sales & Service