

7511 Allentown Blvd.
Harrisburg, PA 17112

**75 TRUCKS
IN STOCK**

**AFFORDABLE
CARS AND TRUCKS, INC.**

"You Gotta Believe!!"

New Exit #72A, Rt. 81 N; Rt. 22 East of Harrisburg; 3 Miles North of Hershey Park

717-652-1925
FAX 717-652-4888
Hours: Mon. & Tues. 9-9
Wed. thru Sat. 9-6

**01 DODGE RAM 2500 4x4 SLT LARAMIE
QUAD DOOR LONGBOX**

Cummins Turbo with Banks setup with the 5-speed Trans AC, PW, PDL, Tilt, Cruise & More. 90K This is Like New!
\$22,995



01 DODGE RAM 2500 4x4 LARAMIE SLT

4x4 Ext., Quad Door, Shortbox, Cummins Turbo Dsl, Rare 5-Spd., AC, PW, PDL, Tilt, Cruise, Stereo & New Radials Only 80K This One Will Really Impress You!! She's All Black & Showroom Clean!
\$21,995



97 DODGE RAM 2500 4x4 LARAMIE SLT
Longbed Ext. Cab, 5 Spd., AC, PW, PDL, Jake Tilt Cruise & More This is Another Beautiful Rig! 100,000 Mi
\$16,995



91 CHEVY 1500 4x4 SILVERADO
350 V8, AT, AC, PW, PDL, Tilt, Cruise, Runs & Looks Perfect, 150K
\$3,995



00 DODGE RAM 2500 4x4 SLT LARAMIE QUAD DOOR,
Longbed, Cummins Turbo DSL, AT, AC, PW, PDL, Leather Interior, This Truck Is All Black & Like New, 102K
\$20,500



00 FORD F350 XLT 4x4 SUPER DUTY CREW CAB
1 Ton Longbox 7.3 Powerstroke Dsl Rare 6 Spd New Synchros This Vehicle Looks & Drives Like New & Where Do You Find Them? 110K
\$21,995



84 FORD F150 XLT 4x4
V8 302 AT AC, Lper Cap Nice Running Truck with Current PA Insp & Good Tires, Clean Too
All For First \$995 HURRY!



99 FORD F-250 XL 4x4 SUPERDUTY QUAD DOOR LONGBOX
7.3 Powerstroke, Rare 6 Speed Trans., AC, Cloth, Super Clean ALL BLACK TRUCK Has Complete Tow Setup! 100,000 mi
\$17,995



98 CHEV 2500 4x4 SILVERADO H.D.
8600 GVW, 350 Vortec, AT, AC, PW, PDL, Tilt, Cruise and More, 99K Very Sharp Truck!
\$10,995



99 FORD F350 4x4 LARIAT SUPER DUTY CREW DUALY
7.3 Powerstroke Dsl., AT, AC, PW, PDL, Tilt, Cruise & Leather This is Like a New Truck 110K
\$21,995



95 DODGE RAM 2500 4x4 LARAMIE SLT
Cummins Turbo DSL, AT, AC, PW, PDL, Tilt, Cruise, Only 70,000 Miles, 1-owner, Showroom Condition!
\$13,995



99 DODGE RAM 4x4 2500 SLT,
Laramie Quad Door Long Box, Cummins Turbo 5 Spd Fully Loaded Flawless Texas 1-Owner This is a most desired truck on the used market Only 100,000 Mi Hurry
\$19,995



97 FORD F150 XLT SHORTBOX
V8 AT, AC, PW, PDL, Tilt, Cruise, Really Good Looking Truck, All Black & She's A Beauty 100,000 Mi
Only \$7,995



95 CHEVY SILVERADO 1500 4x4 EXT SHORTBOX
350 V8, AT, Power Everything, Blk/Gold 2-tone 100,000 mi Super Clean Truck!
\$8,995



98 DODGE DAKOTA SLT 4x4 SPORT
Ext Cab, V6, AT AC, PW, PDL, Tilt Cruise & More 100,000 Mi Dk Green
\$7,995



96 FORD F250 XLT, 4x4 EXT., LONGBOX
7.3 Powerstroke DSL AT, AC, PW, PDL Tilt Cruise All DK Green 120K, Real Sharp Truck Needs Nothing
\$13,995



97 FORD F250 XLT 4x4 EXT.
Longbed, 7.3 Powerstroke, AT, AC, PW, PDL, Tilt, & More 2 Tone Blue, 100,000 Mi
\$15,995



97 DODGE RAM 2500 SLT LARAMIE EXT.
Short, 360 V8 AT, AC, PW, PDL Tilt, Cruise Really Sharp, 110K Mi., Red/Black
\$10,500



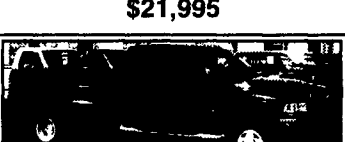
99 FORD F350 4x4 XLT SUPER DUTY CREW DUALY
7.3 Powerstroke Dsl., Rare 6 Spd., AC, PW, PDL, Tilt, Cruise & Much More Only 120K, Black Truck
\$21,995



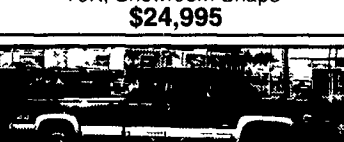
01 DODGE RAM 2500 4x4 LARAMIE SLT QUAD DOOR LONGBOX
High Output Cummins Turbo Dsl., 6 Spd., AC, PW + All Equip., All Black, 70K, Showroom Shape!
\$24,995



88 CHEVY C-30 4x4 CREW LONGBOX SCOTTSDALE,
2 Tone Red/Black 350 V8, 5 Spd No AC 100,000 Mi Just Traded And This Is A Nice Truck! I Have The Only One On The East Coast
\$7,500



00 DODGE RAM 3500 4x4 LARAMIE SLT QUAD DOOR 1 TON DUALY
AT, AC, PW, PDL Tilt, Cruise & More, 90K
\$20,995



99 CHEVY 2500 4x4 SILVERADO EXT LONGBED H.D.
8,800 GVW, 6.0 V8 Vortec, AT, AC, PW, PDL, Tilt, Cruise & Much More - Real Nice Truck, 1 Owner, 106K
\$14,995

Disclaimer Mileage listed for your convenience only it is approximate not to be relied on as exact Sorry for any inconvenience

**DIESEL
PERFORMANCE**



Chevy Duramax: Adjustable Module 30 to 90 HP increase! AFE performance air filter assy
Dodge 24 Valve: Adjustable Module 40 to 120 HP increase! Exhaust & intake upgrades
Powerstroke: Performance chips 40, 60, 80 hp. Programmed while you wait!!

SPECIALS:

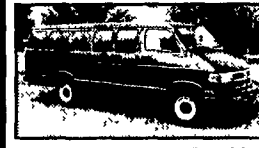
DURAMAX long block exchange.....\$5,700
POWERSTROKE Test Engine exch.....\$5,500
6.5L Long block kit w/pump, inj. gp, & turbo exch.....\$4,750
ALLIANT OEM Factory NEW Powerstroke injectors exchange.....\$207
DIGITAL Pyrometer kit.....\$399
POWER TONNO Cover by Webasto.....\$749
6.5L Exchange Turbocharger GM4, 5, & 8.....\$438
STANADYNE PERFORMANCE Fuel Conditioner by the case.....\$48



From The Diesel Specialists For Over 45 years
Penn Diesel Service Co.
Interstate 81 Exit 77, Harrisburg, PA
(800) 535-2913

Woodcrest Motors

SPECIALIZING IN TRUCKS & VANS
1200 North Reading Rd., (Rt. 272) Stevens, (Lancaster Co.) PA 17578
717-336-3130



00 DODGE RAM 3500 15 PASS. VAN
V8 AT, Dual A/C, PW, PL T. C. Cass, Dk Blue, 58,000 miles
\$12,500



98 CHEV ASTRO LT
AWD, V6, AT, Dual A/C, 8-Pass., Cass. CD, Most Options, Dk. Blue & Silver, 64,000 Miles
\$9,995



02 CHEV VENTURE LS
Extended, V6, AT, A/C Most Options, 7 Pass Silver 59,000 Miles



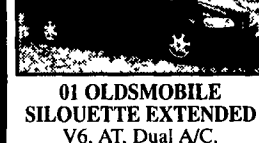
01 CHEV 1500 EXPRESS LS
V8, AT, Dual A/C, 8 Pass Most Options, White, 61,000 Miles
\$13,500



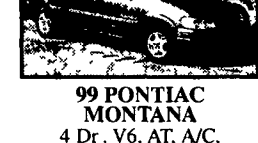
98 FORD CLUB WAGON CHATEAU
7 Pass., V8, AT, Dual A/C PW, PL., C. T, Black & Silver 93,000 Miles
\$9,900



00 CHEV ASTRO LT Extended AWD
8-Pass., Leather, V6, AT, Dual A/C, Most Options, White, 60,000 Miles
\$12,500



01 OLDSMOBILE SILOUETTE EXTENDED
V6, AT, Dual A/C, PW, PL., C. T, Stereo Cass., Dk Blue, 51,000 miles
\$12,995



99 PONTIAC MONTANA
4 Dr., V6, AT, A/C, Most Options, Blue, 65,000 Miles
\$10,900



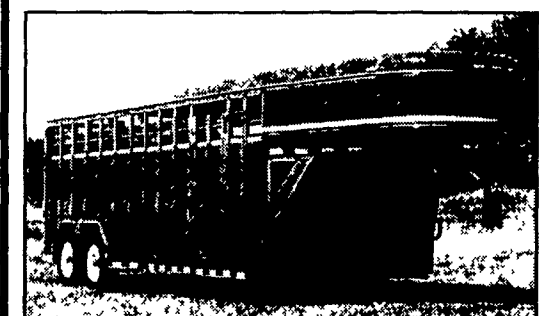
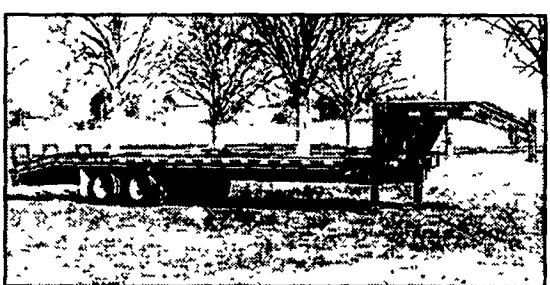
00 FORD WINDSTAR SE
V6, AT, Dual A/C, 4 Dr., Most Options, Black, 63,000 Miles
\$10,995

H.R. Collins & Company Trailer Sales
5139 Perry Rd., Mt. Airy, MD 21771
1-800-784-4584
hrcollins.com

Adam 20 Ft. Heavy Duty
7 Ft. Interior Height
3 Horse Slant
All Alum.



Corn Pro
& Top Brand
Gooseneck
& Pintle Hook
Types



Corn Pro
20 ft. Stock
Gooseneck
7 Ft. Interior
Height