

Selling Trucks Surplus To Our Current Needs!



1988 C70 Chev Dump Truck, Galion body, 350 ci., 30,000# GVW, 5 Spd. w/2 Spd. Rear, Good Tires, 70,000 Mi., New Paint, Clean Truck, Current Inspection **\$9,500 OBO**

Great Truck For Greenhouse Delivery Truck!!
1988 Mack Mid Liner MS200P, 25,000# GVW, 16' Box w/2,500# Capacity Lift Gate, Gate Is 94" Wide x 71" Long, Door Opening Is 71" High On Box, Painted, Current Inspection, Good Tires **\$6,000 OBO**

We Can Load It On Your Truck Or Trailer.

Tom @ Tilley's Nursery Inc 610/282-4784 Day
111 E. Fairmount St., Coopersburg, PA 18036
Lehigh County

GM Goodwrench Engines

feel the confidence



THE FEELING IS GENUINE



- 12 Month Minimum Warranty
- Limited 36 Month Warranty
- Shipped As Shown

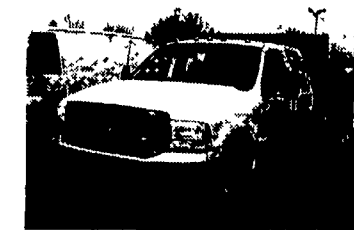
86 and prior carbureted 4 bolt main.....\$1,370
87-95 TBI, Truck, 2 bolt main.....\$1,799
87-96 TBI, 3/4 Truck, 4 bolt main.....\$1,899



Jones Parts Warehouse
A Division of Jones Family of Dealerships

Prices are subject to change. Prices do not include shipping.
Please call for the best possible shipping prices for you

1-800-827-0129



2003 NEW Ford F-550
Crew Cab, 4x2, 7.3 Liter, with Dump, #9577



2002 Ford F-150 Super Crew 4x4
20,000 Miles
Sale Priced at **\$25,777**



1999 Ford F250 4x4 Super Cab
Turbo Diesel, XLT, Maroon
Sale Priced @ **\$22,772**



1998 Ford E-250 Van
Racks - 5.4
Sale Priced **\$\$\$**



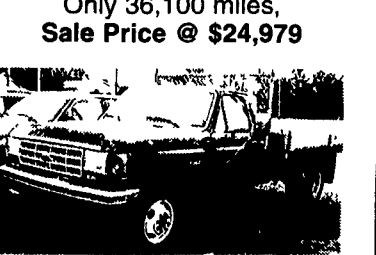
2004 Ford F-350 - New
4x4, Reg. Cab
Save on '04's



1999 Ford F350 DRW 4x2,
V-10, 5th Wheel Hook-up,
Only 36,100 miles,
Sale Price @ **\$24,979**



2000 Ford Crown Victoria
Local 1-Owner Trade
Sale Priced **\$\$\$**



1989 Ford F-350 Stake Body Dump
V8, Auto, Low Mileage,

ALL STEEL REPLACEMENT TRUCK BED
8 1/2' Lx82"W
9'Lx8"W,
10'Lx8"W or 12'Lx8"W

Underbody Tool Boxes Available

UTILITY TRAILER
4'x8' Tilt **\$495**

4'x8', 5'x8', 5'x10' 2000# GVW
6'x10', 6'5"x12', 3000# GVW

LANDSCAPER

16'x77", 18'x77", 7,000# GVW

ALSO 84" WIDE!

CAR HAULER
16'x78" & 18'x78" Includes 5' Beavertail
7,000 lb. GVW 4' self storing ramps

Special!
5'x10' 3,000 lb. GVW
~~\$995~~ • **\$950**

Roto Tillers
4ft \$1,250 5ft \$1,295 6ft \$1,395

Finish Mowers
5ft.. \$995 6ft \$1,095 91" \$1,395

Rotary Mowers
4ft...\$585 5ft \$595 6ft...\$695

3pt Fertilizer Spreader \$329
Pull Type Fertilizer Spreader \$595

Pull Hay Tedders
9ft. \$1,295 14ft \$2,495

19 Ft Hydraulic, Tilt Trailer, 10,000 lb. GVW **\$3,495**

ATV Hauler, 3000 lb GVW, 7'x10'...\$1,095 7'x12' \$1,195

Car Dollie \$795

Over 200 Trailers IN STOCK
Starting At **\$495.00**
T-Plates
DEALERS WANTED

HIGHWAY HYDRAULIC DUMP BRI-MAR

FREE BATTERY

5'x8' 3,000# \$2,295 6'x10' 10,000# \$3,395
5'x8' 5,000# \$2,595 7'x12' 10,000# \$4,195
6'x10' 7,000# \$3,095

LOW PROFILE DUMP TRAILERS BRI-MAR

Other Sizes Available

6'x12' 10,000# **\$4,395**
6'x10' GVW
7,000# **\$3,595**
10,000# **\$3,995**

FREE BATTERY

GOOSENECK SIZES: w/4' Adj. Tail

20'x8' 12 or 15,000 GVW
24'x8' 15,000# GVW

Low Profile Construction
16'x77" & 18'x77"-10,000# GVW

DECK-OVER CONSTRUCTION
20'x8' w/Tail 10,000# GVW **\$3,395**
20'x8' w/Tail 12,000# GVW **\$3,795**

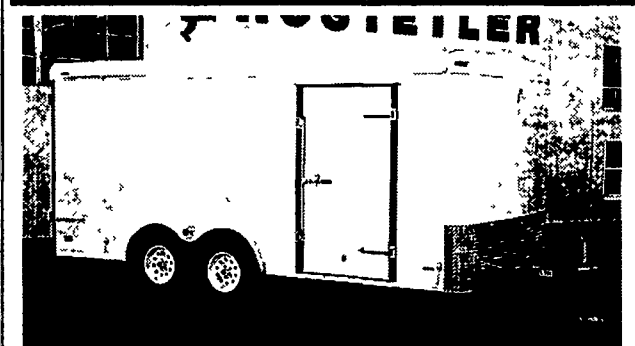
KUTZ FARM EQUIPMENT, INC.
Quality Trailers Built Locally By "PA International"
71 Kutz Road, Pine Grove, PA 570-345-4882 Fax 570-345-2884
www.kutzfarm.com
7:30 AM-4 PM Monday Thru Friday
7:30 AM-12 Saturday Or By Appointment

Beshore & Koller
"The Good Service People"
Sales Service
717-266-3651
Toll Free: 877-266-6945

Hours:
Mon.-Thurs. 8:30-8:30
Fri. 8:30-6:00; Sat. 8:30-2:00

Only 8 Minutes North of Rt. 30 on N. George St. in Manchester, PA

HOSTETLER Truck Bodies & Trailers
717-667-3921
Milroy Exit off Rt. 322
Between Lewistown & State College

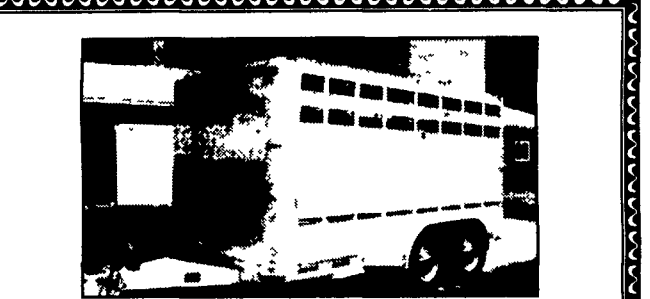


- Pace American Trailers**
- Journey 5'x8', Extra Height, Single Axle, Red **\$1516**
 - Journey 5'x10' Extra Height, Stone Guard, Pewter, **\$1879**
 - Journey 7'x16' Side Door, Double Rear, 7000# GVW, Gray, **\$4018**
 - Cargo Sport 8'x16' Double Doors, Side Door, 7000# GVW **\$4653**
 - Cargo Sport 8'x20' Double Doors, Side Door, 10,000# GVW **\$5672**



- Moritz Dump Trailers**
- 6' x10' Deckover Dump, 7000# GVW, Dump Thru Gate
 - 6'x10' Low Profile, 10,000# GVW, Ramps, Double Doors
 - 6'8"x12' Low Profile, 12,000# GVW, Ramps, Double Doors
 - 8'x14' Gooseneck Grain Dump, 14,000# GVW, 36" High Sides

- Aluminum Truck Bodies**
- Cadet 8'x84" Aluminum Pick Up Platforms, Bulkhead, Rear Skirt with Lights, Gooseneck Door
 - Eby 9'x9'4" Aluminum Platform, Bulkhead, Gooseneck Compartment, Heavy Duty Bed
 - 9' Dump Body, 20" Sides, 30" Gate, 1/4 Cab Protector
 - 16' Grain Body 48" High Sides, Double Acting Tailgate, Grain Chute



- Eby Aluminum Livestock Trailers**
- LS 6'x13' Bumper Pull, 7' High, 7000# GVW, Torston Axles
 - LS 6'x16' Bumper Pull, Torston Axles, 10,000# GVW
 - LS 6'x16' Bumper Pull, 7' High, Torston Axles, 10,000# GVW
 - LS 6'8" x16' Gooseneck, Torston Axles, 10,000# GVW
 - Maverick 6'8"x20' Gooseneck, 7' High, 14,000# GVW

- Used Trailers**
- Premier 2 Horse Bumper Pull Trailer
 - Utility Trailer, 6'x12' 8000# GVW
 - Cronkite 16'x4' 6 Ton Low Boy Trailer
 - Hudson 2003 Model 6 Ton Low Boy Trailer