



\$5,500/obo

**1980 International DT 466,**  
20' Van With MAXON Lift Gate New Motor, 2000  
With Less Than 5K Miles  
Haul your hay in the dry  
**717/227-0486**



\$8,900

**1987 MACK MODEL DM685S**  
Tandem Axle 22'10" Steel Flatbed. 285 Mack 2 valve engine  
107A 10sp trans 44000 lb rears on camel back suspension  
Double frame P/S, A/C 315-8DR-22 5 back tires and 11R22 5 front  
tires on cast spoke wheels (All Good) Sharp Truck  
**Camden Truck 856-456-4030**  
**215-925-0322**

**350 TRUCKS / TRAILERS**

(3) IHC farm dump grain trucks, 450 & 500 bu bodies, 10x20 tires, \$1500. Up Lehigh Co. (610)262-4501 eves

(14) Box vans for sale from \$3900 to \$29,000. Good cond. Call Jim (814)342-9724

'01 Chevy Silverado 2500, HD, 3/4 ton, 4x4, crew cab, long bed, 6.0, 5 spd, PS, PB, air, 9,200 GVW, 410 ratio, limited slip diff, 41,000 one owner miles, new radials, pewter, ex. cond., \$22,500. 717-733-2873  
1999 Chevy Cheyenne K2500, 4x4, 350 auto, PS, PB, cruise, tilt, air, Am-Fm CD, 45,000 miles, dark blue, \$14,900. 717-733-2873



**1989 28' Fruehauf trailers ..... \$1,595**

Each trailer has the following specifications 12'6" high, 96" wide; Rear roll-up doors, side door-right side, Air ride, sliders, Aluminum sides; E track, F track on roof and floor, 11R22 5 tires, Budd wheels, Road Worthy

These trailers can be used as storage or on the road. Excellent shape!

**Call Mark at (717) 558-9550.**



**2002 Nissan UD**

w/14' Service/Van body w/Roll-up Rear door, Work Benches & Outside Tool Boxes, Auto Trans., PS, 14,000 GVW, AM/FM/CD. .... **\$34,749**



**1999 CHEVY 1500 EXPRESS CARGO VAN,**  
AT, A/C  
**\$8,500**

**1997 Fruehauf Box Trailer**  
53 ft Long, 102 in Wide, 13 ft 6 in High, Translucent Roof

**1991 Nissan UD**  
6-speed, 190 HP, 16ft Van Body, New Inspection, Ready to Work!  
**\$7,900**

**1995 Nissan UD 2600**  
Diesel, 25,950 GVW, 6-Spd, 18 Ft Van Body, 135,000 Miles  
**\$21,900 \$17,900**

**New 2003 UD Trucks In Stock**  
Stake Dump, Dry Freight Body

- Call for Details. Leasing & Financing Available.

**INTERNATIONAL CENTRAL GARAGE, INC.**

South 2nd St. (Rt. 419) Womelsdorf (Berks Co.) Pa.  
**610-589-4581 or 800-860-4581**

**LESHER SALES & SERVICE**

2700 Cumberland St. **717-273-4535**  
Lebanon, Pa. website:www.leshermacksales.com  
(Route 422 West)



**New Trucks**

- (1) 2004 CX613 Day Cab, E7-427, 10-Spd., Air Susp., 169 W.B.
- (1) 2004 CV713 Granite, AI-427-Aset, RTP 14908LL, 265" W.B.

**TECHNICIAN NEEDED**  
Call for Details

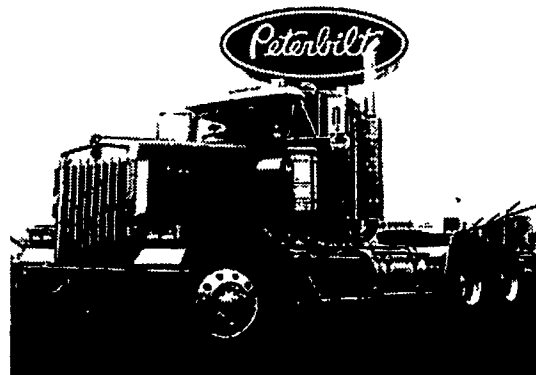
**Used Trucks**

- (1) 1995 CH613, 42 in. Highrise \$13,500
- (1) 1998 CH613 42" Flattop \$20,250
- (1) 1997 CH613, 64" Mid-Rise, Full Roof & Chassis Fairings, 427 HP, 10-Spd., 560K Miles \$19,000

Many other Trucks in Stock - Call for Details

**HUNTER KEYSTONE PETERBILT**

1463 Manheim Pike • Lancaster, PA 17604  
**717 299-6630 • 800 243-2458**



**2002 KW W900L; C15-475 w/Jake,**  
18-Spd., 210" W.B., 3.90 Ratio, V.I.T., Dual Exh./Breathers, Air-Glide, Stock #7885796



**2000 KW W900L; 475 Cat w/Jake, 13-Spd, 3.55 Ratio, 260" WB, 72" Aero w/Sofa Bed, Upper Bunk, Refridg, Dual Exh/Breathers, VIT, Stock #J850456**

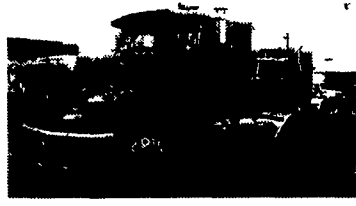
**\$ We Buy Used Trucks !!! \$**  
Call Chris Vanatta  
Used Truck Manager  
**\$ 800-243-2458 \$**



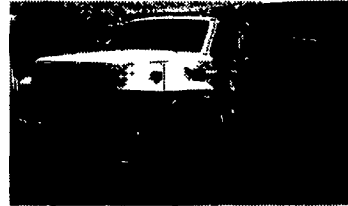
**2001 FRT CLASSIC XL, C15-500 w/Jake,**  
13-Spd., 3.58 Ratio 70" Condo, Dual Exh/Breathers, 260"W.B., Stock # LH06431



**2000 STERLING AT9513 DAY CAB;**  
w/Jake, 10-Spd Auto Shift, Air Ride, Alum Whls, Air Ride Cab, Stock #AF72368



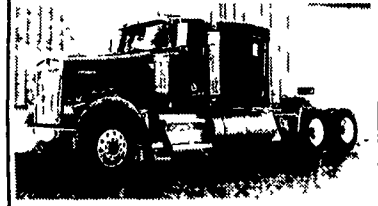
**1996 MACK CH613 DAY CAB; E7-350**  
w/Jake, 10-Spd, 150" WB, Air Ride, (6) Alum Whls, Stock #W058329



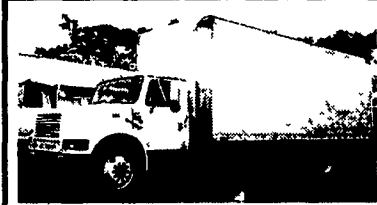
**1988 Ford F800 Dump; 7.8L Diesel, 6-Spd, 30,780-lb GVWR, 2-Spd Rear, 10' Steel Dump w/Pintle Hook, Stock #VA01382**



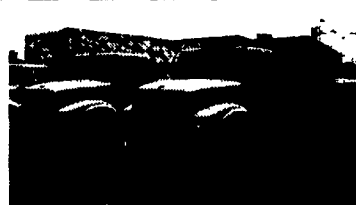
**1999 PETE 379, 430 Detroit w/Jake, 10-Spd, 250" WB, Air Leaf Susp, 63" Flat Top, S/S Air Clnr, Wet-Line, 1/2 Fenders, Stock N476711**



**1999 KENWORTH W900-L; N14-525**  
w/Jake, 13-Spd, 250" WB, 370 Ratio, VIT Interior, 60" Flat Top, Stock #J826330



**2000 INT'L 4700; 190 HP Diesel, 7-Spd, A/C, 25,500-lb GVW, Under CDL, 24'x97" Morgan Van Body, Stock #H252682**



**(2) 1999 Int'l 4900 Cab/Chassis; DT466-210, 7-Spd, 32,900-lb GVWR, Air Brakes, Reinf Frame, Air-Ride Dr Seat, 2-Man Pass Seat, Stock #H600038**



**1999 INT'L 4900; DT466E-210, 7-Spd, Air Brakes, 32,900 lb GVWR, 24' Van w/Lift Gate, Stock #613723**



**1999 INT'L 4700; T444E-190, 5-Spd., 25,500 lb. GVWR, 18' Van Body, Stock H600016**



**1998 INT'L 4900; DT-530E 250HP**  
w/Exhaust Brake, 6-Spd., 32,900 GVWR, Air-Ride, 266" WB, Air Brakes, Reinf Frame, S/S Wheel Covers, A/C, Stock #555279