

# GOODYEAR

#1 in Tires

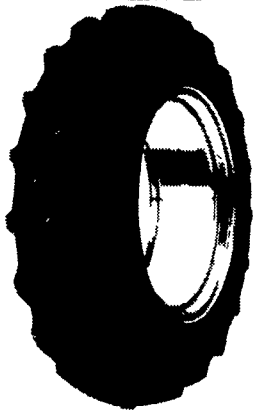
## THE RIGHT TIRE

## FOR THE WAY YOU FARM

### Goodyear Bias Ply Tractor Tires

#### KELLY SPRINGFIELD POWER MARK 2000

#### (R1) DURATORQUE ECONOMY

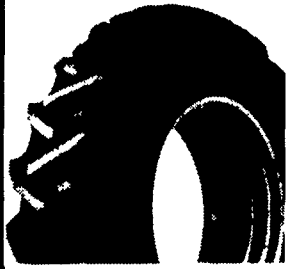


Priced with Long/Long Bar

- 83/24 6 Ply TT **\$135**
- 95/24 4 Ply TT **\$125**
- 14.9/28 6 Ply TT **\$234**
- 15.5/38 6 Ply TT **\$270**

Other Sizes Available

#### (R1) DYNA TORQUE II



For Excellent Drawbar Pull,  
Even High-Torque Tractors

- 11.2/24 6 Ply TT **\$159**
- 13.6-24 8 Ply TT **\$264**
- 14.9/24 6 Ply TL **\$263**
- 16.9/30 6 Ply TT **\$334**

Other Sizes Available

8.3-24 4 Ply TL **\$114**

11.2-24 4 Ply TL **\$128**



15.5-38  
6 Ply TL **\$237**

18.4-38  
8 Ply TL **\$384**

No Worries.  
No Catches.  
No Risk.

Goodyear's  
No Risk Pledge

Goodyear is so confident in the farm radials we're backing them with our No Risk Pledge. All you have to do is mount premium Ultra-Traction or other select Goodyear farm radials on your vehicles and if you're not completely satisfied, we'll take them off your vehicle.

### Goodyear Radial Rear Tires

#### (R1) ULTRATORQUE RADIAL



Cuts Through Mud, Dirt  
And All Kinds Of Soil

- 480/80R 38TL **\$605**
- 420/90R 30TL **\$621**
- 380/85R 34TL **\$604**
- 520/85R 42TL **\$789**

Other Sizes Available

#### GOODYEAR'S ULTRATORQUE RADIAL LINE-UP

Size	Replaces Size
380/85R28	149R28
420/85R28	169R28
380/85R30	149R30
420/90R30	169R30
380/85R34	149R34
480/85R34	184R34
480/80R38	184R38
520/85R38	208R38
480/80R42	184R42
520/85R42	208R42
380/90R46	149R46
420/80R46	169R46
480/80R46	184R46

#### (R1) DYNA TORQUE RADIAL

Revolutionary High Tractor  
3-Pitch Lug Design



- 13.6R28  
TL 3\*\*\* **\$454**
- 14.9R28  
TL 3\*\*\* **\$555**
- 18.4R38  
TL 1\* **\$575**
- 20.8R38  
TL 1\* **\$755**

Other Sizes Available

#### (I-1) FARM UTILITY

- Outstanding flotation
  - Easy steering from the heavy grooved ribs
- Rib Implement Tire - Easy Operation For Many Types of Equipment



- 11L-15 8 PLY TT **\$46**
- 760-15 8 PLY TL **\$56**
- 95L-14 8 PLY TT **\$54**
- 12.5L-15 8 PLY TT **\$71**

Other Sizes Available

#### (F-1) FARM HIGHWAY SERVICE

Designed for Implements & Wagons  
DOT Approved for Highway Speed

95L-15FI-6 Ply TL **\$62**

Other Sizes Available

#### TRI RIB HD

3 Rib Designed Improved Steering In Loose, Cultivated Soil



- 1000-16 8 PLY TT **\$93**
- 1100-16 8 PLY TT **\$107**

Other Sizes Available

#### (F2) HEAVY DUTY HI-RIB (PREMIUM)

6 Sizes Available



**KELLY K TIRES**  
(R-1)  
**POWER MARK**  
2 Sizes Available



#### ATV TIRES

##### RUN FLAT



- **TRACKER LINE-UP**  
1/2" Tread Depth Avg.
- **RAWHIDE LINE-UP**  
3/4" Tread Depth Avg.
- **MUD RUNNER LINE-UP**  
1" Tread Depth Avg.

#### KELLY SPRINGFIELD HARD SURFACE (R4)



17.5L-24 8 Ply

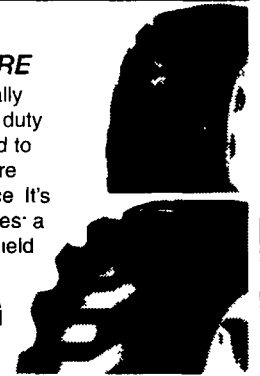
**\$279**

#### SKID STEER LOADER TIRES

##### IT323

##### PREMIUM SKID STEER TIRE

Our premium bias ply tire specifically developed for skid steers in heavy duty applications. The IT323 is designed to provide excellent durability, puncture resistance and traction performance. It's equipped with new premium features: a sidewall scuff rib and rim flange shield.



##### SURE GRIP LUG

##### SUPER SINGLE

For use in soft soil operation where traction and flotation are required.

#### (R4) IT 525 INDUSTRIAL BIAS



Design For Backhoe/Loader Operation

17.5L-24-8 Ply

**\$285**

YOU COME TO US FOR YOUR FARM TIRES NEEDS... ALSO SEE US FOR YOUR AUTO & LIGHT TIRES NEEDS!

**CLUB**  
All-Season Radial  
At A Great Price  
**\$44<sup>95</sup>**  
185/70R14/BSL  
Other Sizes and Prices Available  
40,000 Mile Tread Life  
Limited Warranty

**REGATTA 2**  
Durable, All-Season  
Touring Radial  
**\$69<sup>95</sup>**  
P175/65R14 BSL  
Other Sizes and Prices Available  
75,000 Mile Tread Life  
Limited Warranty

**EAGLE GT II**  
Eagle Performance  
And Style At A  
Great Price  
**\$69<sup>95</sup>**  
P185/60R14 BSL  
Other Sizes and Prices Available

**EAGLE LS**  
Quiet Riding,  
Luxury Sport Tire  
**\$79<sup>95</sup>**  
P195/60R15 BSL  
Other Sizes and Prices Available

**CONQUEST AP**  
Economy All-  
Weather Radial  
For Light Trucks  
**\$79<sup>95</sup>**  
P225/75R15  
Other Sizes and Prices Available

**WRANGLER RT/S**  
Smooth Riding  
All-Weather Radial  
Capable Of  
All-Terrain Duties  
**\$94<sup>95</sup>**  
P205/75R15  
Other Sizes and Prices Available

CALL 1-800-FARMTIRE.

**GOODYEAR**

As American As Farming

**Neatons Tire**  
On The Farm Service  
25 East Ave., Easton, MD 21601  
1-800-317-6152

**BHM Farm Equipment**  
RD 1 Rt. 934 North  
Annville, PA 17003  
717-867-2211

**Lebanon Valley Imp. Co.**  
On The Farm Service  
700 E. Linden St., Richland, PA 17087  
717-866-7518

**Zimmerman Farm Service**  
On The Farm Service  
School Road, Bethel, PA 19507  
717-933-4114

**Donald B. Rice Tire Co.**  
On The Farm Service  
1420 Tilco Drive, Frederick, MD 21701  
1-800-407-0556

**Horlacher & Sherwood**  
On The Farm Service  
153 E. Tioga • Tunkhannock, PA  
570-836-1116

**H&F Tire Service**  
On The Farm Service  
1834 Lincoln Hwy. East, Lancaster, 17602  
1-800-451-6710

Check our Web Site  
@ [www.Goodyear.com](http://www.Goodyear.com)  
Click on "Tires" - Click on "North America  
Tire" - Click on "Farm & Industrial"