

7511 Allentown Blvd.  
Harrisburg, PA 17112

# AFFORDABLE CARS AND TRUCKS, INC.

717-652-1925  
FAX 717-652-4888  
Hours: Mon. & Tues. 9-9  
Wed. thru Sat. 9-6

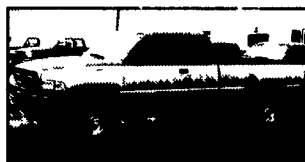
75 TRUCKS  
IN STOCK

**"You Gotta Believe!!"**

New Exit #72A, Rt. 81 N; Rt. 22 East of Harrisburg; 3 Miles North of Hershey Park

### 01 DODGE RAM 2500 4x4 SLT LARAMIE QUAD DOOR LONGBOX

Cummins Turbo with Banks setup with the 5-speed Trans AC, PW, PDL, Tilt, Cruise & More, 90K This is Like New!



\$22,995

### 01 DODGE RAM 2500 4x4 LARAMIE SLT

4x4 Ext., Quad Door, Shortbox Cummins Turbo Dsl, Rare 5-Spd AC, PW, PDL, Tilt, Cruise, Stereo & New Radials Only 80K This One Will Really Impress You!! She's All Black & Showroom Clean!

\$21,995



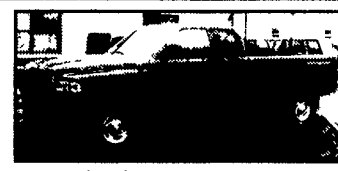
**97 DODGE RAM 2500 4x4 LARAMIE SLT**  
Longbed Ext Cab, 5 Spd., AC, PW, PDL, Jake, Tilt, Cruise & More This is Another Beautiful Rig! 100,000 Mi

\$17,995



**91 CHEVY 1500 4x4 SILVERADO**  
350 V8, AT, AC, PW, PDL, Tilt, Cruise, Runs & Looks Perfect, 150K

\$3,995



**00 DODGE RAM 2500 4x4 SLT LARAMIE QUAD DOOR,**  
Longbed, Cummins Turbo DSL, AT, AC, PW, PDL, Leather Interior, This Truck Is All Black & Like New, 102K

\$20,500



**00 FORD F350 XLT 4x4 SUPER DUTY CREW CAB**  
1 Ton Longbox, 7.3 Powerstroke Dsl, Rare 6 Spd., New Synchros This Vehicle Looks & Drives Like New & Where Do You Find Them? 110K

\$21,995



**84 FORD F150 XLT 4x4**  
V8 302, AT, AC, Leer Cap Nice Running Truck with Current PA Insp & Good Tires, Clean Too

All For First \$995 HURRY!



**99 FORD F-250 XL 4x4 SUPERDUTY QUAD DOOR LONGBOX**  
7.3 Powerstroke, Rare 6 Speed Trans, AC, Cloth, Super Clean ALL BLACK TRUCK Has Complete Tow Setup! 100,000 mi

\$17,995



**98 CHEV 2500 4x4 SILVERADO H.D.**  
8600 GVW, 350 Vortec, AT, AC, PW, PDL, Tilt, Cruise and More, 99K Very Sharp Truck!

\$10,995



**99 FORD F350 4x4 LARIAT SUPER DUTY CREW DUALY**  
7.3 Powerstroke Dsl, AT, AC, PW, PDL, Tilt, Cruise & Leather This is Like a New Truck 110K

\$21,995



**95 DODGE RAM 2500 4x4 LARAMIE SLT**  
Cummins Turbo DSL, AT, AC, PW, PDL, Tilt, Cruise, Only 70,000 Miles, 1-owner, Showroom Condition!

\$13,995



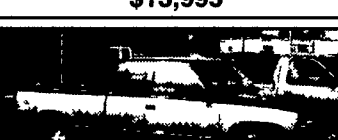
**97 FORD F150 XLT 4x4 EXT. CAB,**  
3rd Door, Shortbox, V8, AT, AC, PW, Pdl, Tilt, Cruise & More All Black, Very Clean! 130,000 Mi,

\$10,995



**97 FORD F150 XLT SHORTBOX**  
V8 AT, AC, PW, PDL, Tilt, Cruise, Really Good Looking Truck All Black & She's A Beauty 100,000 Mi

Only \$7,995



**95 CHEVY SILVERADO 1500 4x4 EXT SHORTBOX**  
350 V8, AT, Power Everything, Blk/Gold 2-tone 100,000 mi Super Clean Truck!

\$8,995



**98 DODGE DAKOTA SLT 4x4 SPORT**  
Ext Cab, V6, AT, AC, PW, PDL, Tilt, Cruise & More 100,000 Mi Dk Green

\$7,995



**96 FORD F250 XLT, 4x4 EXT., LONGBOX**  
7.3 Powerstroke DSL, AT, AC, PW, PDL, Tilt, Cruise All DK Green, 120K, Real Sharp Truck, Needs Nothing

\$13,995



**97 FORD F250 XLT 4x4 EXT.**  
Longbed, 7.3 Powerstroke, AT, AC, PW, PDL, Tilt, & More, 2 Tone Blue, 100,000 Mi

\$15,995



**97 DODGE RAM 2500 SLT LARAMIE EXT.**  
Short, 360 V8, AT, AC, PW, PDL, Tilt, Cruise, Really Sharp, 110K Mi, Red/Black

\$10,500



**99 FORD F350 4x4 XLT SUPER DUTY CREW DUALY**  
7.3 Powerstroke Dsl, Rare 6 Spd, AC, PW, PDL, Tilt, Cruise & Much More Only 120K, Black Truck

\$21,995



**01 DODGE RAM 2500 4x4 LARAMIE SLT QUAD DOOR LONGBOX**  
High Output Cummins Turbo Dsl., 6 Spd, AC, PW + All Equip, All Black, 70K, Showroom Shape!

\$24,995



**88 CHEVY C-30 4x4 CREW LONGBOX SCOTTSDALE,**  
2 Tone Red/Black 350 V8, 5 Spd No AC, 100,000 Mi Just Traded And This Is A Nice Truck! I Have The Only One On The East Coast

\$7,500



**00 DODGE RAM 3500 4x4 LARAMIE SLT QUAD DOOR 1 TON DUALY**  
AT, AC, PW, PDL, Tilt, Cruise & More, 90K

\$20,995



**99 CHEVY 2500 4x4 SILVERADO EXT LONGBED H.D.**  
8,800 GVW, 6.0 V8 Vortec, AT, AC, PW, PDL, Tilt, Cruise & Much More - Real Nice Truck, 1 Owner, 106K

\$14,995

Disclaimer Mileage listed for your convenience only it is approximate not to be relied on as exact Sorry for any inconvenience

# DIESEL PERFORMANCE



**Chevy Duramax:** Adjustable Module 30 to 90 HP increase!  
AFE performance air filter assy

**Dodge 24 Valve:** Adjustable Module 40 to 120 HP increase!  
Exhaust & intake upgrades

**Powerstroke:** Performance chips 40, 60, 80 hp.  
Programmed while you wait!!

**SPECIALS:**

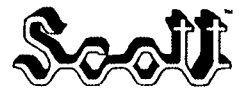
- DURAMAX long block exchange.....\$5,700
- POWERSTROKE Test Engine exch.....\$5,500
- 6.5L Long block kit w/pump, inj. gp, & tubo exch.....\$4,750
- ALLIANT OEM Factory NEW Powerstroke injectors exchange.....\$207
- DIGITAL Pyrometer kit.....\$399
- POWER TONNO Cover by Webasto.....\$749
- 6.5L Exchange Turbocharger GM4, 5, & 8.....\$438
- STANADYNE PERFORMANCE Fuel Conditioner by the case.....\$48



From The Diesel Specialists For Over 45 years  
**Penn Diesel Service Co.**  
Interstate 81 Exit 77, Harrisburg, PA  
(800) 535-2913

# F.M.I.

Your Full Line For



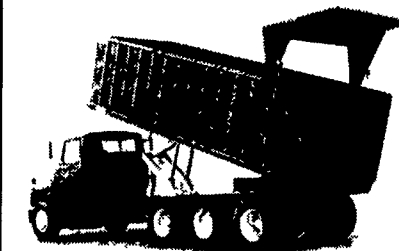
FEEDMOBILE, INC.

717-626-2680 Lititz, PA

## TRUCK BODIES & HOISTS

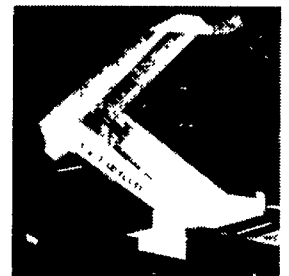
**MULTI PURPOSE BULK MATERIAL**

Dump Body  
12'-24' Lengths



### CHIPPER BODY

- 56" Sides
- 30" 2 pc Endgates
- Aluminum top or optional tarp
- Available in 8'-12' lengths with wood or aluminum floors



### DROP HINGE HOISTS

- Class B - 9' to 12'
- Class D - 12' to 16'
- Class E - 12' to 16'
- Class F - 12' to 18'

USED TRUCK FLAT BED: 24' WITH WINCH STRAPS .....\$700  
TRUCK LIFT AXLE ..\$1,000

## Fisher Trailer Sales

### Moritz - 2003's Reduced

- Bumper slant load combo - 2 saddle racks, bridle hooks, 7' tall, dress room, spare wheel, blue - grn - charcoal - Retail \$4,305 **Reduced \$3,850**
- Maroon - bus windows Retail \$4,465 **Reduced \$4,250**
- Gooseneck slant load combo - charcoal Retail \$5,496 **Reduced \$4,800**
- Bumper 13' stock charcoal Retail \$3,818 **Reduced \$3,400**

### Ponderosa - 2003's Reduced

- Bumper - 10' stock .....\$2,900
- 12' stock 7' tall .....\$3,250

### Exiss - 2003's Reduced (Aluminum)

- Goosenecks - 3 horse Retail \$13,896 **Reduced \$12,200**
- 3 horse slant combo Retail \$13,095 **Reduced \$11,500**
- Stock 20x7x7 ...Retail \$11,275 **Reduced \$10,000**
- Stock 16x7x7 .....Retail \$10,426 **Reduced \$9,200**

### Used

- Moritz '01 3 horse slant combo 6'8 wide, bridle hooks, saddle racks, like new .....\$4,000
- Custom Fab '93 alum gooseneck 7' wide ...\$5,800
- Chaparral '84 stock gooseneck 20x6x6 .....\$1,200

223 Middle Rd., McVeytown, PA 17051

717• 242-0941