



1989 F350 Diesel
Aluminum Ti Brook, service body excellent
814-793-3874

USED TRAILERS

JIM MARINO
USED TRAILER MANAGER
717-492-1806



Great Dane Trailers
1831 AUCTION ROAD
MANHEIM, PA 17545
www.lancaster@greatdanetrailers.com

35

TRUCKS AND TRAILERS

1990 L8000 Ford Truck, \$10,000/obo. 410-452-8487
'91 Chevy Silverado Suburban 2500, 2WD, 350 auto, PS, PB, PW, PDL, cruise, tilt, air, 8 pass, 410 ratio, towing package, 82,000 miles, excellent condition, \$5,900. 717-733-2873
'99 Dodge SLT 1500 4x4, 360 auto, PS, PB, PW, PDL, cruise, tilt, air, 72,000 miles, new radials, \$11,900. 717-733-2873



\$55,000

1995 Autocar Roll-Off
Detroit Series 60 with 330 HP, 98,000 Miles 3463 Hours
15K Front and 58K Rear, Allison Automatic
American 75,000 o/r Auto Tarper Just Serviced Excellent Shape
973/347-1101 ask for Jim



WM. COHEN & SONS, INC.

"THE TRUCK PARTS STORE"
HEAVY DUTY TRUCK PARTS - NEW & USED - REBUILT REARS & TRANSMISSIONS
610-269-1298 Fax 610-269-0787 www.cohentruckparts.com



1990 GMC 7000 DT-506
Detroit 8.2 Diesel, 5 Speed, 2 Speed Rear, 7,000 Lbs., 19,000 Lbs Rear, Hydraulic Brakes, Salt Spreader, 12 Ft Angle Plow



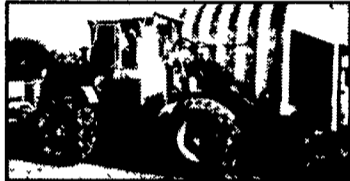
New Flatbeds Available
Sizes currently available are 12', 14', 20', 22' and 24' Racks are also available



2000 GMC SIERRA SL
4300 V6, 5 Speed, 79,000 miles, 4x4, 8 ft bed with liner, cloth interior, A/C, AM/FM \$13,500



(9) 40' - 45' 1970's & Newer Steel Flatbed Trailers (also have drop deck trailers) some have sliding tandems, all in



Michigan Loader Model L30
Quick Coupler, Comes With 1 Yard Bucket and 60" Forks, Runs Excellent



Aluminum Tanker/Trailers
7500 gal. and up



1972 Ford F-800 Tanker
391 V8 Gas, Auto, 86,371 miles, 4 Wheel drive, air brakes, power steering, 2000 gallon Single Rear, 27,500 GVW tank. \$6,500

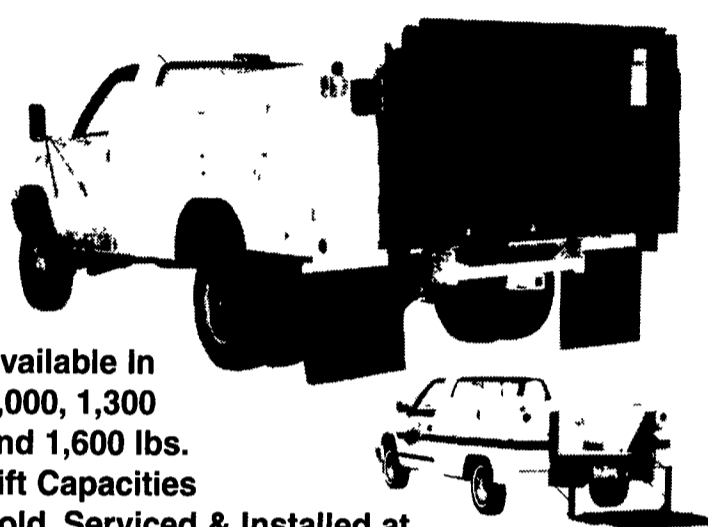


Kalmar Forklift, Propane Powered,
4435 lb. capacity, 42" forks, 192" lift, cushion tires, 2194 hours



1989 GMC Kodiak, 3208T Cat Engine
5 Speed, 2 Speed, 4 Door Cab, P/S, 167" wheel base, 35,000 lb G.V.W. 108,614 miles, 10x20 tires, hydraulic brakes, ball hitch setup for gooseneck trailer

The original
TOMMY GATE
hydraulic lift



Available In
1,000, 1,300
and **1,600 lbs.**
Lift Capacities
Sold, Serviced & Installed at

ANNVILLE EQUIPMENT CO.
470 Palmyra Bellgrove Road Anville, PA 17003
717-867-4631 1-800-233-0520



00 DODGE 2500 SLT SPORT
Quad cab Laramie AT, A/C. Most Options, CD Player, Cummins Turbo Diesel, 71K Mi., Blue, #D0393

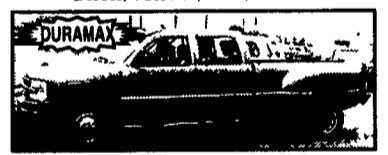


Bobby Gerhart's Truck World

2480 E. Cumberland St. Rt. 422 Lebanon, PA 17042

Mon. - Fri. 9-8, Sat. 9-3

717-273-7995



01 CHEVY 3500 CREW CAB DUALY,
Duramax Diesel, AT, LT, Leather, Most Options, Burnt Orange, 63,000 Mi.



99 FORD F350 CREW CAB 4X4
AT, Powerstroke Diesel, A/C, XL, AM/FM/Stereo, 74K Miles, White



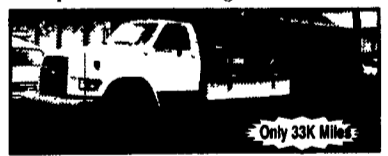
99 DODGE 2500 QUAD CAB
w/Utility Work Cap 4x4, Cummins Diesel, AT, SLT, All Equip, 74,000 Mi., Blue



2000 FORD F450 10ft Flatbed Dump
Power Stroke Diesel, 5-Spd, A/C, Only 33K Miles, 15,000 GVW



00 DODGE 3500 12FT. DUMP 4X4
Plow, 360V8, AT, A/C AM/FM/Cass 33K Miles Red #D0395



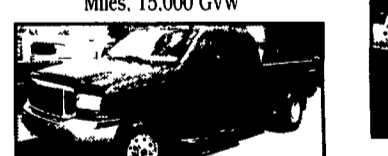
95 FORD F800 16 FT. STAKEBODY W/LIFTGATE
5.9-230HP Diesel, 7-Spd., Only 33K Miles, 30K GVW, White



00 CHEV 3500 WALK-IN UTILITY BODY
AT, A/C, C, T, 454 V8, White, 59K Miles



00 FORD F250 4x4
Power Stroke Diesel, XLT, 6-Spd., A/C, Most Options, Only 40K Miles, Maroon



99 FORD F250 XLT QUAD CAB 4X4
Power Stroke Diesel, AT, A/C, Most Options, 110K Miles, Maroon, #F3004



00 FORD F350 4X4 XLT
Power Stroke Diesel, AT, A/C, Most Options, 42K Miles, White #F2079



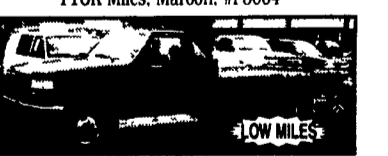
71 FORD 900 TANDEM AXLE DUMP
52,000 GVW, V8, 10-Speed Split Shift, Excellent Farm or Site truck, PA Inspected



99 GMC 3500 CREWCAB DUALY 9 FT. FLATBED
w/Both Hitches, 454, AT, PS, PB, A/C, 29,000 Miles, White, Perfect Condition! #G233



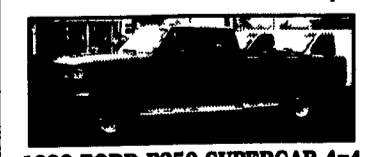
87 FORD F350 12 FT. STAKE BODY DUMP
5-Spd., 460 V8, Only 45K Miles **SPECIAL \$7,995**



97 FORD F350 10 FT. FLATBED
2WD, 5-Spd., 351 V8, A/C, 16K Miles, Red #F2076



95 FORD F800 12 FT. DUMP
26K GVW, 370 V8, 5-Spd, 2-Spd. Rear, 35K Miles, Red



1993 FORD F250 SUPERCAB 4x4
7.3 Diesel 5 Spd XLT A/C, Most Options Only 84K Miles Dk. Red



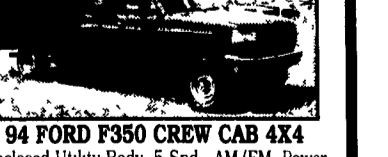
01 DODGE RAM 2500 4X4
w/Cummins Diesel, AT, SLT, most Options, 33,000 Mi, Red



2000 CHEVY 3500 HD
15000 GVW, Contractor Dump, 5 Spd., 454, 37,000 Mi.



97 FORD F250 SUPER CAB 4x4
Power Stroke Diesel, AT, XLT, A/C, Most Options, 144K Miles, Green



94 FORD F350 CREW CAB 4X4
Enclosed Utility Body, 5-Spd, AM/FM Power Stroke Diesel, 74K Miles Red



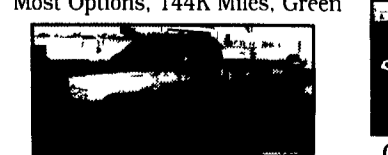
00 FORD F-350 QUAD CAB 4X4,
Powerstroke, Diesel, 6 sp, A/C Cass 33,000 Mi Red!



89 FORD F350 SUPER CAB
Dually AT XLT, Lanat, A/C Most Options 93K Miles, White



1988 GMC 2500 SIERRA 4x4
350 V8 AT A/C AM/FM 121K Miles Blue Very Nice Condition



97 DODGE 2500 4x4 SLT
Cummins Turbo Diesel, AT A/C Most Options Black & Silver 99K Miles



00 FORD F350 CREW CAB DUALY
4x4 Power Stroke Diesel Lanat, AT AC Most Options 50,000 Miles Burnt Orange w/Tan Leather