

www.useddieseltruck.com

CHECK IT OUT

Chevy Engines New & Reman
 Tractor, Backhoe, Loader,
 Engines Rebuilt
 717-762-6415

SAVE. STORAGE OR
 ROAD TRAILERS, 20' or
 40' GROUND LEVEL
 CONTAINERS. PROMPT
 & COURTEOUS SERVICE.
 REASONABLE RATES.
 YOUR STORAGE SOLU-
 TION, INC. 610/921-1955,
 1-800/220-6082

178 MUDDY CREEK CHURCH ROAD
 DENVER, PA 17517-9328
 (717) 336-7528 • FAX (717) 336-4655
 800-952-4228
 www.mgsincorporated.com

MGS TRAILERS

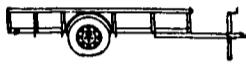
Dealer For
BigTex TRAILERS



UTILITY TRAILER



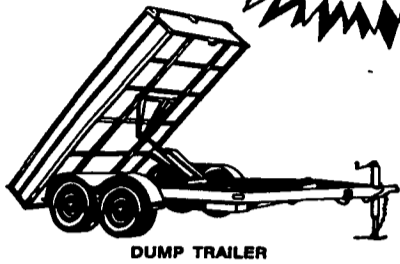
CAR HAULER TRAILER



UTILITY TRAILER



**LARGE SELECTION
 GREAT PRICES**



DUMP TRAILER

**BIG TEX PRICES
 START AT:**
 4x8 = **\$625**
 5x10 = **\$835**
 6x10 = **\$1,060**
 6 1/2x16 = **\$1,475**

Big Tex Trailers Also Available At:
EAGLE RENTAL CENTER
 Rt 272, Reamstown Traffic Light
 • 717-336-3945

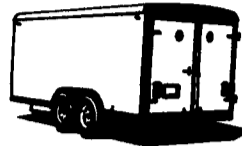
**Trailer Sales
 OPEN DAILY 8-5
 SATURDAY 8-12**

**TRAILER - - PARTS
 SERVICE, INSPECTION
 HITCHES INSTALLED
 BRAKE CONTROL INST.**

**DRAWITE HITCHES
 In Stock**

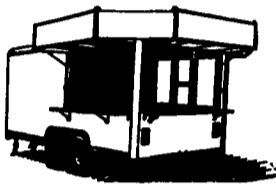
Dealer For

WELLS CARGO



**WELLS CARGO
 PRICES
 START AT:**

5x8 = **\$1,928**
 6x10 = **\$2,727**
 7x14 = **\$4,412**
 8x20 = **\$5,445**



Meadowbrook Auto Sales
 875 Abbottstown Pike, Hanover, PA
 717-632-9600 717-633-5789



**1999 Ford F-350 Ext. Cab
 4x4 Dually**
 7.3 Powerstroke Diesel, A T,
 PS, PB, Air Cond, Tilt Wheel,
 Cruise Control, PW, PDL,
 Cloth Interior, Super Clean, 161K
Only \$18,900



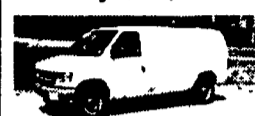
**1999 Chevrolet 3500
 Cube Van**
 350 V-8 16 Ft Aluminum Box
 Dual Rear Wheels, PS, PB, Air
 Cond, Real Nice Condition,
 92,000 Miles
Only \$11,900



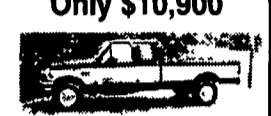
**1998 Dodge Ram
 Ext. Cab 2500 4x4**
 Cummins Diesel, A T, PS, PB,
 Air Cond, Tilt Wheel, Cruise
 Control, 163,000 Miles
Only \$14,900



**1997 Chevrolet K-2500
 Ext Cab 4x4,**
 350 V-8, A T, PS, PS, Air Cond
 Tilt Wheel, Cruise Control PW,
 PDL 126,000 Miles
Only \$10,900



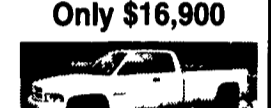
1997 Ford E-350 Cargo Van,
 5.4 V-8, Automatic, Air Cond,
 PS, PB, 94,000 Miles
Only \$8,900



**1997 Ford F-250 Ext
 Cab 4x4 XLT,**
 7.3 Powerstroke, A T, PS, PB
 Air Cond, PW, PDL, Tilt Wheel
 Cruise Control, 99,000 Miles
Only \$16,900



1988 Ford F-350 Crew Cab,
 V-8 460, A T, PS, PB, Air Cond,
 PW, PDL, 156K Local Trade,
Only \$4,900



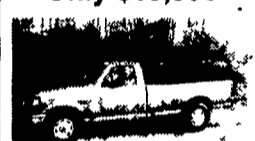
**1999 Dodge Ram 3500
 Ext Cab 4x4 Dually,**
 Cummins Diesel, A T, PS,
 PB., Air Cond., Cruise
 Control, Tilt Wheel, PW,
 PDL, 82,000 Miles,
 Super Nice Condition
Only \$22,900



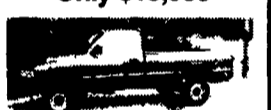
**1998 Chevrolet
 12 Ft. Dump Stakebody,**
 350 V-8, Automatic, PS, PB,
 Air Cond, Tilt Wheel, Cruise
 Control, Dual Rear Wheels,
 25,000 Miles
Only \$19,900



**1999 Dodge Ram 2500
 Laramie SLT 4x4**
 V8, A.T, PS, PB, Air Cond, PW
 PDL, Tilt Wheel, Cruise Control,
 47,000 Miles
Only \$15,900



**1997 Ford F-250
 351 V-8 Automatic PS PB**
 Air Cond E-Z Dump Bed
 106 000 Miles
Only \$9,500



1995 Dodge Ram 2500 4x4
 Cummins Diesel, A T PS PB
 Air Cond, Cruise Control 160K
Only \$10,900



**1994 Dodge Ram 3500
 Dually**
 Cummins Diesel, A T, P S,
 PB, Air, PW, PDL, Tilt,
 Cruise, Real Nice Cond.,
 241K,
Only \$7,900



**1995 Dodge Ram 2500
 Laramie SLT 4x4**
 Cummins Diesel, AT, PS, PB,
 Air Cond, PW, PDL, Tilt
 Wheel, Cruise Control, Super
 Nice, 114 000 Miles
Only \$12,900



**1997 Ford F-350 Utility
 Truck Ext. Cab**
 7.3 Powerstroke Diesel, A T,
 PS, PB, Air Cond, Dual
 Rear Wheels, 116,000 Miles
Only \$14,900



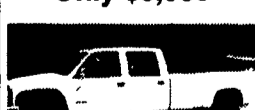
**1986 Ford F-250
 Ext Cab,**
 6.9 Diesel, A T, PS, PB
 Air Cond, Tilt Wheel, Cruise
 Control, PW, PDL, 179K,
Only \$5,900



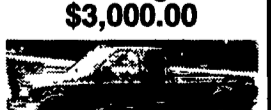
**1994 Ford F-250
 Ext. Cab**
 7.3 Turbo Diesel, Automatic,
 PS, PB, Air Cond, Cruise
 Control Tilt Wheel, PW,
 PDL, 126,000 Miles
Only \$9,900



**Stepvans - All
 Aluminum,**
 10 ft to 16 ft Single Rear and
 Dual Rear Wheels, Aluminum
 & Manual Transmissions, 4
 Cyl & 8 Cylinder Diesels, 1
 350 Gas, Service Records for
 Most Many to Choose from
**Starting at
 \$3,000.00**



**1998 Chev. 3500
 Crew Cab**
 Dually 4x4 454 V-8 A T,
 PS PB Air Cond PW
 PDL Tilt Wheel, Cruise
 Control Real Nice Condition
Only \$17,900



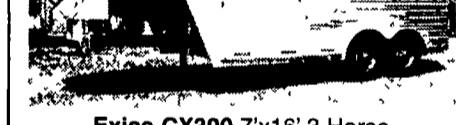
**2000 Ford F-250
 Ext Cab XLT,**
 7.3 Powerstroke Diesel,
 6 Speed PS PB, A/C
 PW PDL Tilt Wheel
 Cruise Control 98 000 Miles
 Real Nice Condition
Only \$21,900

YARNALLS Equipment Co.
 4171 Horseshoe Pike (Rt. 322), Honey Brook, PA 19344
 Call Today Toll Free: 866-228-0408

EXISS In Stock • EXISS In Stock • EXISS In Stock • EXISS In Stock •



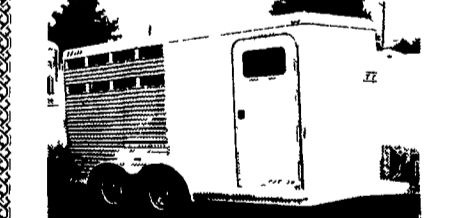
Stock Combo for Draft Horses,
 7'6" High, Gently Used



**Exiss CX300 7'x16' 3 Horse
 Slant Load \$12,250**



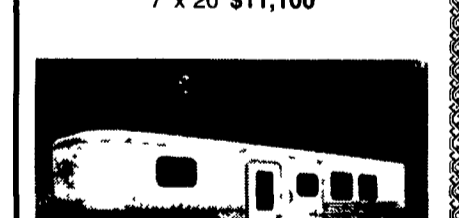
**Exiss Stock Combo
 7' x 20' \$11,100**



**Exiss CXT20, 2 Horse Slant
 Load w/Dressing room. \$9,775**



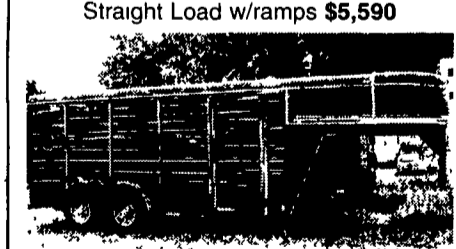
**Bison 6'x12' Trail Horse 2 Horse
 Straight Load w/ramps \$5,590**



**Exiss Sport
 3-Horse Slant Load w/Dress.
 No down payment \$12,499**



**18' Equipment Trailer, Special,
 12,000 GVW \$3,925**



**Bison 6'x16' Gooseneck Stock Trailer
 \$5,330**

USED TRAILERS



18 Ft. Deckover, 10K



1994 Pacer 16 Ft



**1996 Big Valley 3 Horse
 Gooseneck**



**Bison Stock 7x16 7 high, red
 w/spare \$5,275**

REESE
FARM CREDIT
 Nobody knows the field better.

Financing - Trade Ins - Repairs
 Hours: Mon., Tues., Wed., Fri. 8:30-5:00;
 Thurs. 8:30-7:00; Sat. 9:00-1:00 P.M.
 8 Miles Off Exit 22 PA Turnpike

**WESTERN
 SNOWPLOWS**