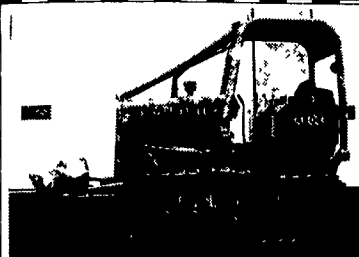
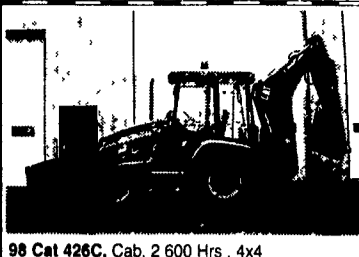


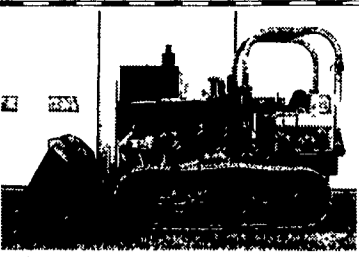
**1A CONSTRUCTION EQUIPMENT**



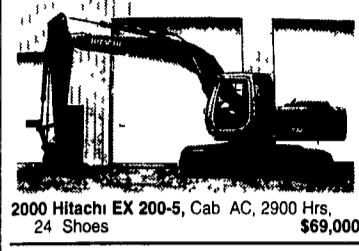
85 JD 450E, OROPS, 4,050 Hrs, 80% UC \$19,500  
 94 Cat D3C, Cab 10,659 Hrs 50% UC \$25,000  
 88 Cat D4H, Canopy 7,320 Hrs, 80% UC, New Paint \$29,000



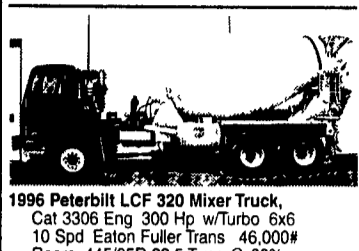
98 Cat 426C, Cab, 2 600 Hrs, 4x4 Extendahoe New Tires \$32,500  
**NEW ADDITIONS**  
 88 Cat 953, Cab 90% UC \$39,500  
 99 ASV Posi Track, HD 4500 453 Hrs Call  
 01 Cat 236, 283 Hrs Good Cond Call  
 98 Komatsu D41P-6, OROPS 5 300 Hrs Call



79 Int'l 125E, 5 370 Hrs 75% UC \$11,500



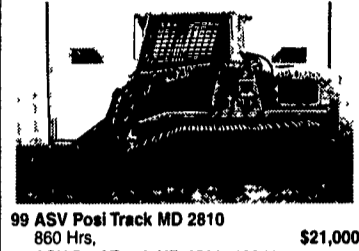
2000 Hitachi EX 200-5, Cab AC, 2900 Hrs, 24 Shoes \$69,000



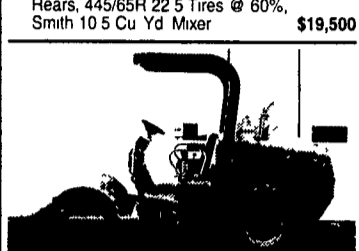
1996 Peterbilt LCF 320 Mixer Truck, Cat 3306 Eng 300 Hp w/Turbo 6x6 10 Spd Eaton Fuller Trans 46,000# Rears, 445/65R 22.5 Tires @ 60%, Smith 10.5 Cu Yd Mixer \$19,500



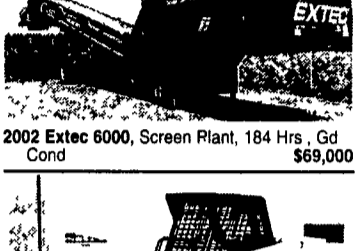
2001 Scheff SKL 853 Wheel Loader, 12 Hrs 80 Hp 1 6 Yd Bkt Like New \$29,000



99 ASV Posi Track MD 2810 860 Hrs, \$21,000  
 99 ASV Posi Track HD 4500, 496 Hrs, GD Cond \$22,000  
 99 ASV Posi Track HD 4520, 680 Hrs \$23,000  
 99 ASV Posi Track HD 4520, 230 Hrs \$23,000



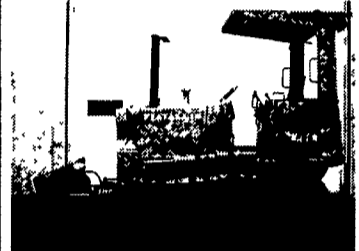
2001 Super PAC 540 Canopy, 82 Hrs, 54" Drum Drive \$23,000



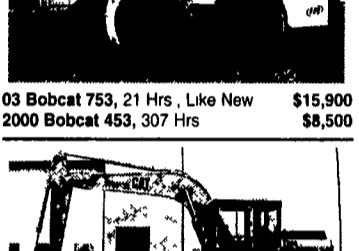
2002 Extec 6000, Screen Plant, 184 Hrs, Gd Cond \$69,000



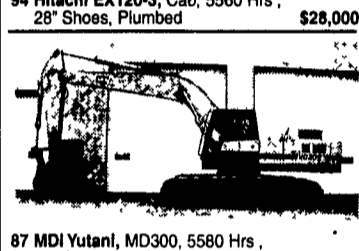
87 Hitachi EX 200LC, Cab, 32" Pads, \$21,000  
 94 Hitachi EX120-3, Cab, 5560 Hrs, 28" Shoes, Plumbed \$28,000



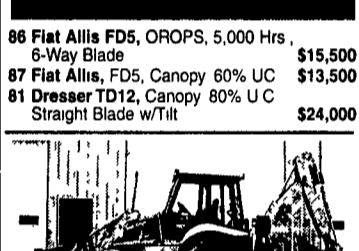
86 Fiat Allis FD5, OROPS, 5,000 Hrs, 6-Way Blade \$15,500  
 87 Fiat Allis, FD5, Canopy 80% UC \$13,500  
 81 Dresser TD12, Canopy 80% UC Straight Blade w/Tilt \$24,000



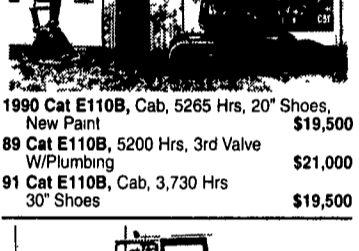
03 Bobcat 753, 21 Hrs, Like New \$15,900  
 2000 Bobcat 453, 307 Hrs \$8,500



87 MDI Yutani, MD300, 5580 Hrs, 32" Shoes, 10' Stick \$18,000  
 89 Link-Belt LS2800C II, 990 Hrs 32" Shoes, Thumb \$19,500



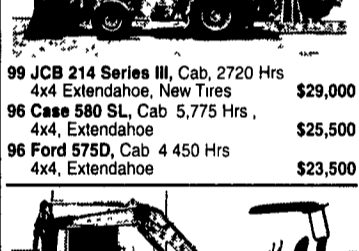
99 JCB 214 Series III, Cab, 2720 Hrs 4x4 Extendahoe, New Tires \$29,000  
 96 Case 580 SL, Cab, 5,775 Hrs, 4x4, Extendahoe \$25,500  
 96 Ford 575D, Cab 4 450 Hrs 4x4, Extendahoe \$23,500



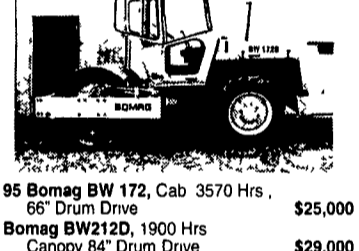
1990 Cat E110B, Cab, 5265 Hrs, 20" Shoes, New Paint \$19,500  
 89 Cat E110B, 5200 Hrs, 3rd Valve w/Plumbing \$21,000  
 91 Cat E110B, Cab, 3,730 Hrs 30" Shoes \$19,500



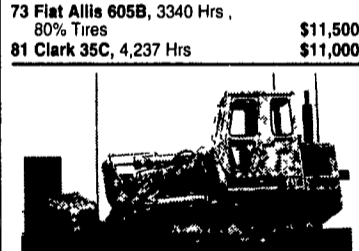
73 Fiat Allis 605B, 3340 Hrs, 80% Tires \$11,500  
 81 Clark 35C, 4,237 Hrs \$11,000



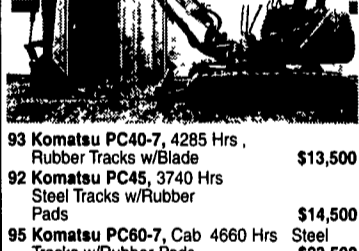
93 Komatsu PC40-7, 4285 Hrs, Rubber Tracks w/Blade \$13,500  
 92 Komatsu PC45, 3740 Hrs Steel Tracks w/Rubber Pads \$14,500  
 95 Komatsu PC80-7, Cab 4660 Hrs Steel Tracks w/Rubber Pads \$23,500  
 92 Cat E70B, Cab, 3,800 Hrs, Steel Tracks w/Blade \$18,500  
 92 Kubota KH151, Cab, Steel Tracks, 12,000# \$9,500



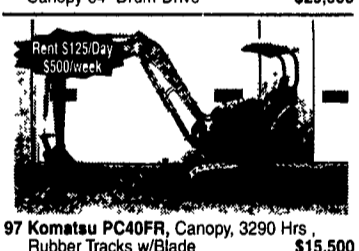
95 Bomag BW 172, Cab 3570 Hrs, 66" Drum Drive \$25,000  
 Bomag BW212D, 1900 Hrs Canopy 84" Drum Drive \$29,000



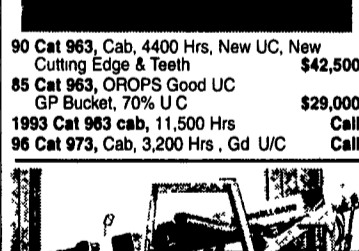
90 Cat 963, Cab, 4400 Hrs, New UC, New Cutting Edge & Teeth \$42,500  
 85 Cat 963, OROPS Good UC GP Bucket, 70% UC \$29,000  
 1993 Cat 963 cab, 11,500 Hrs Call  
 96 Cat 973, Cab, 3,200 Hrs, Gd UC Call



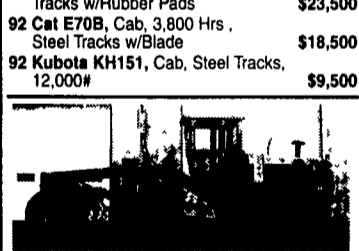
89 Dresser A450E Motor Grader, Cab, Scarifier, 14' Moldboard \$19,500  
 90 Champion 720A 6x6, 14 Moldboard Cab \$24,500



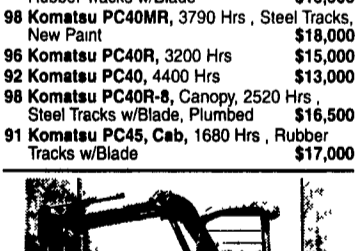
97 Komatsu PC40FR, Canopy, 3290 Hrs, Rubber Tracks w/Blade \$15,500  
 98 Komatsu PC40MR, 3790 Hrs, Steel Tracks, New Paint \$18,000  
 96 Komatsu PC40R, 3200 Hrs \$15,000  
 92 Komatsu PC40, 4400 Hrs \$13,000  
 98 Komatsu PC40R-8, Canopy, 2520 Hrs, Steel Tracks w/Blade, Plumbed \$16,500  
 91 Komatsu PC45, Cab, 1680 Hrs, Rubber Tracks w/Blade \$17,000



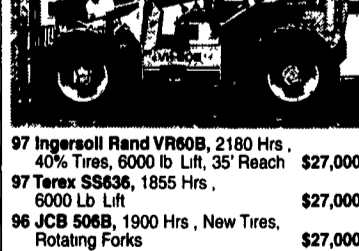
97 Ingersoll Rand VR60B, 2180 Hrs, 40% Tires, 6000 lb Lift, 35' Reach \$27,000  
 97 Terex SS636, 1855 Hrs, 6000 Lb Lift \$27,000  
 96 JCB 506B, 1900 Hrs, New Tires, Rotating Forks \$27,000  
 JCB 525B Forklift, Bucket, Forks & Grapple, 2200 Original Hrs Call  
 97 Hario H300B, Forklift, 830 Hrs, 4000# Lift, 21' Mast \$13,500



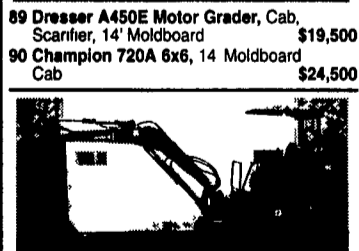
97 Komatsu PC35R-8, Canopy, 1890 Hrs, Rubber Tracks w/Blade \$14,500  
 96 Komatsu PC20-7E, Canopy, 2644 Hrs, Rubber Tracks w/Blade \$12,500  
 91 Komatsu PC25, Canopy, 4900 Hrs, Rubber Tracks, w/Blade \$10,500



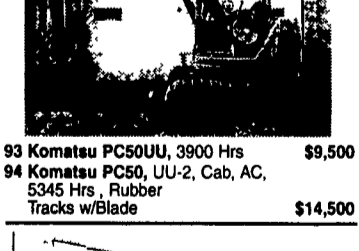
93 Komatsu PC50UU, 3900 Hrs \$9,500  
 94 Komatsu PC50, UU-2, Cab, AC, 5345 Hrs, Rubber Tracks w/Blade \$14,500



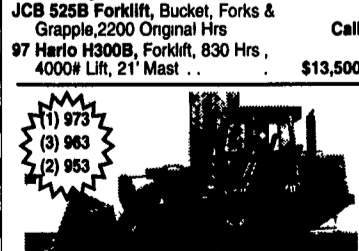
88 Ford F350 Dually, Mechanics Body, Crane, Electric Lift Gate, New Motor, New Tires \$6,900  
 Komatsu 30 Forklift, 6,600 lb Lift, Gas Eng \$7,000  
 78 JD 755, Canopy, 6520 Hrs, 4 in 1 Bucket, New Paint, 75% UC \$15,000  
 Volvo 825B Articulated Truck, 6x6 \$36,000  
 79 JD 850, OROPS, Angle Blade \$17,000



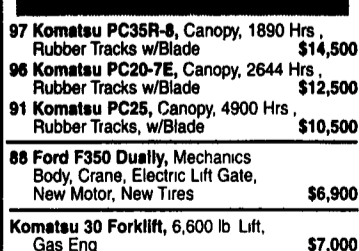
97 Cat 312B, Cab, 4580 Hrs, 20" Shoes, New Paint \$37,500  
 93 Cat 312, 5670 Hrs \$28,000  
 92 Cat 312, Cab, AC, 6200 Hrs, New Paint \$29,000  
 94 Komatsu PC75UU, 4900 Hrs \$19,000  
 93 Komatsu PC75UU, Canopy, 3600 Hrs, Rubber Tracks w/Blade \$16,500



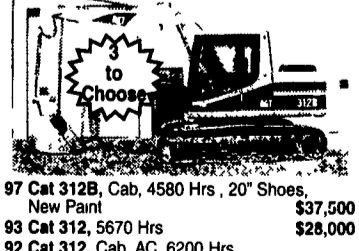
97 Cat 312B, Cab, 4580 Hrs, 20" Shoes, New Paint \$37,500  
 93 Cat 312, 5670 Hrs \$28,000  
 92 Cat 312, Cab, AC, 6200 Hrs, New Paint \$29,000  
 94 Komatsu PC75UU, 4900 Hrs \$19,000  
 93 Komatsu PC75UU, Canopy, 3600 Hrs, Rubber Tracks w/Blade \$16,500



'94 Cat 953B, Cab, 8360 Hrs, 90% U/C, New Paint \$65,000  
 88 Case 1155E, Canopy, 5,787 Hrs, 50% UC \$17,500



97 Cat 312B, Cab, 4580 Hrs, 20" Shoes, New Paint \$37,500  
 93 Cat 312, 5670 Hrs \$28,000  
 92 Cat 312, Cab, AC, 6200 Hrs, New Paint \$29,000  
 94 Komatsu PC75UU, 4900 Hrs \$19,000  
 93 Komatsu PC75UU, Canopy, 3600 Hrs, Rubber Tracks w/Blade \$16,500



97 Cat 312B, Cab, 4580 Hrs, 20" Shoes, New Paint \$37,500  
 93 Cat 312, 5670 Hrs \$28,000  
 92 Cat 312, Cab, AC, 6200 Hrs, New Paint \$29,000  
 94 Komatsu PC75UU, 4900 Hrs \$19,000  
 93 Komatsu PC75UU, Canopy, 3600 Hrs, Rubber Tracks w/Blade \$16,500

**Weaco Equipment**  
 4009 Conrad Weiser Parkway, Womelsdorf, PA 19567  
 Located 4 Miles East Of Myerstown on Rt. 422 sales@weacoequipment.com  
**610/589-5555 Toll Free 877/529-9328**  
 Rentals Available Day, Week, or Month  
 Financing and Lease Purchase Available No Sunday Calls

**YANMAR PARTS, SALES & SERVICE**  
**BO8-3 EXCAVATOR**

- Unbeatable Quality and Performance
- 2'3" TO 2'9" Working Width
- Comfortable Operating Space
- 2337 Lbs., 4'11" Digging Depth
- Low APR Financing
- Also in Stock VIO20-2, VIO35-2

Also available for rent. For more information on all rental equipment, please call or visit our web site

**(717) 354-4191 (800) 346-8319**  
 110 South Railroad Ave., New Holland, PA 17557  
 Monday Thru Friday 7:30-5:00, Saturday 7:30-Noon  
 Other Times By Appointment  
 Visit our Web Site www.abcgroff.com

**ABC GROFF**  
 DEDICATED TO QUALITY, DRIVEN TO KEEP YOU SATISFIED

**3 SILOS AND UNLOADERS**

24ft J-Star single chain silage conveyor-like new, \$1,750. 814-624-0324

11 yr Madison 16 x 60 silo w/new steel chute, elec winch, you dismantle, \$3,000. 814-624-0324

Patz 98 B unloader, 16-18ft, runs good, new gathering chain, \$1,500. 814-624-0324

WANT Harvestore or slurrystore. Will remove if possible, 717-687-5188.

Crop store 20x40 silo w/unloader & new ariated grain floor \$500 OBO, Harvest store 20x40 silo w/unloader \$500 OBO 814-398-2085

EFM Stoker boiler unit, model DF520, works very good. Also 4 castiron radiators. Call 717-687-6267 after 6pm

Used 25ft Big Jim unloader. 717-994-0137 after 6pm

62x15 Slurry store. 717-363-6741

Versa 8ft silage bagger, new cond, used for 2 bags. 570-345-4109 eves

Top dollar paid for used Harvestores and Slurrystores. 717-354-4051.

Used Slurrystore for sale. 717-994-2233.

Used Patz silo unloader parts, cords & cables. Melvin Nolt. 717-656-2615.

Wanted: Your used Harvestore silos. 717-661-8251

Custom silo doors, 2 layers of T&G cedar w/ sheet of plastic between, all hardware powder coated. We ship UPS & Overnight. 877/484-4104

NEW CONCRETE STAVE SILOS, quality at competitive prices. Renno Silo, RR#2, Box 942, Mifflintown, PA, 17059.

WANTED: Concrete stave silos, will remove. Fair prices paid. 610-273-3993, 1-800-860-3993.

HANSON Silo Unloaders, 20', \$500; 16' Nearly New \$3,000; 16', \$1,000; 12' Emptied Silo Once \$3,000; York Co. 717/741-8395 or 717/577-6400

Patz 98C 16'-20' emptied silo once, \$5,500/OBO, Franklin Co. 717/264-3118

**Fall Discount Prices**

**BAG ALL SILAGE BAGS**  
 BY KLERK S  
 7'-8'-9'-10'-12'  
 Elastic Tubes 4' & 5'  
 Bale Tubes 4' & 6'  
 Pit & Trench Covers - All Sizes

**CENTERLINE BIG BAGGER**  
 by Kelly Ryan  
 7'-8'-9'-10'-12'  
 Parts for Kelly Ryan 10% Discount

**BALE WRAP**  
 20" & 30" Stretch Film Shipped Nationwide

**WRAPPERS**  
 Farmlund & Anderson Salesmen & Dealers Wanted

Pioneer in the Bagging Business Since 1980

**FRANK WALTERS ENTERPRISES, INC.**  
**WE SELL FOR LESS**  
 Call (800) 831-9919

**Martin's Silo of NY,**  
 new & used block silos, shotcrete, relining, fill pipe, distributors, roofs, chutes, replacement doors, general repair.  
**(585) 526-6575**

Jake Stoltzfus & Mike Brendle, Owners

**We Sell & Service:**

- **DEMUTH AGRI-PRODUCTS**
- **VALMETAL**
- **K EYSTONE CONCRETE PRODUCTS**
- **VAN DALE**
- **afs**
- **Lancaster LEVEL FLO**  
 Silo equipment with a heritage of quality
- **JAMESWAY**

**FOR SALE**  
 Used 1 000 Ton Bunker Silo

Silo Doors by **Agri-DOOR**

• Telemark Leasing • Stearns Leasing

For Silo Equipment Service - Gilbert's Agri Service  
 717-865-3111 Toll Free: 866-565-3111