

National FFA Awards Scholarship To Berks Co. Girl

INDIANAPOLIS, Ind. — The National FFA Organization awarded a \$1,000 Westfalia-Surge, Inc. scholarship to Kristy Dietrich of Tulpehocken Area HS FFA. The Westfalia-Surge, Inc., as a special project of the National FFA Foundation, Inc., sponsors the scholarship. Kristy plans to use the funds to pursue a degree at Pennsylvania State University — Berks.

This scholarship is one of 1,926 awarded through the National FFA Scholarship Program this year. Currently, 153 corporate sponsors generously contribute more than \$2 million to support this program.

Dietrich was also one of two outstanding FFA members recognized by the Reading Fair board at their annual banquet on July 23 at the Virginville Grange. She has served as secretary and president of the Tulpehocken FFA. She is accomplished in public speaking and livestock judging, placing 6th at FFA days conducted at Penn State University in June of this year and receiving a gold medal.

Dietrich also enjoys showing her crossbred steers and registered Limousin cattle. She also received a \$100 saving bond from Wachovia Bank for her achievements.



Tulpehocken FFA member Kristy Dietrich, left, is pictured above with William Hughes, representing Wachovia Bank, who awarded her a \$100 savings bond for her FFA achievements.

Ida's Notebook

by
Ida Risser



August may be the month for peaches and sweet corn, but in our family it is also a big birthday month. Most of the birthdays are for teenagers. One will start college this year while another is hunting a college for next year. We mail a check to a far away address rather than mail a gift they might not like.

Our recent wet and damp weather has caused weeds to grow everywhere. The wheelbarrow, back of

the house, is usually full of weeds that I've pulled and also tree trimmings. The limbs are too low and interfere with mowing the lawn. Our two grandsons have been doing this job for us this summer as my husband stays in the house with his crutches.

I did not plant zucchini this year, but I've been asked for recipes. One is a chocolate zucchini cake that includes many ingredients. You can substitute sauerkraut for the zucchini. One time I took this cake to a square dance group meeting and we had fun getting people to guess the unusual item that was included in the cake.

One of the ministers in our church is moving to Florida to be pastor of a church there. What we remember about him is the fact that he was there for us when Allen had his heart operation, his hip operation, his back operation, and so on. What he remembers about us is the black raspberries that we gave him each spring. If we must part, it is nice to have pleasant memories of each other. We wish him and his family Godspeed.



SHIRTS OR SWEATSHIRTS



Shirts

- 100% Cotton Denim Long Sleeve
 - Embroidery Blue & Black
 - Lancaster Farming Logo
 - Button-Down Collar
 - Left Shirt Pocket
 - Stone Bleach Blue
- \$20 – Small, Medium, Large
\$22.50 – X Large
\$23.50 – 2X Large

Sweatshirts

- 90% cotton - dark Blue with embroidery With Lancaster Farming Logo
- \$25 – Medium, Large
\$27.50 – X Large
\$28.50 – 2X Large

Plus \$4.50 Shipping & Handling Costs

Phone 717-721-4416 Or Mail Your Order To:
Lancaster Farming P.O. box 609LFS
1 East Main St., Ephrata, PA 17522

Or Stop @ Office - 1 East Main St., Ephrata, PA
Saves Shipping Cost!

NOTICE: FARM OWNERS

Goodville Mutual is One of the Top 5 Farm Insurance Companies in Pennsylvania

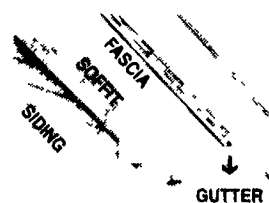
WANT TO KNOW WHY?



Liz Martin
Martin Insurance Agency
459 C N George St
Millersville, PA 17551
(717) 872-7756
Toll Free
1-877-791-5235

www.martininsurance.com
Affordable insurance for farm, home, vehicle, and small business

Agent for Goodville Mutual



CALL THE SPOUTING SPECIALISTS

For

- 5", 6" & 7" Seamless Gutters in 32 Colors
- Half Round Gutters
- Gutter Protech™
- Windows & Doors • Tubular Skylights

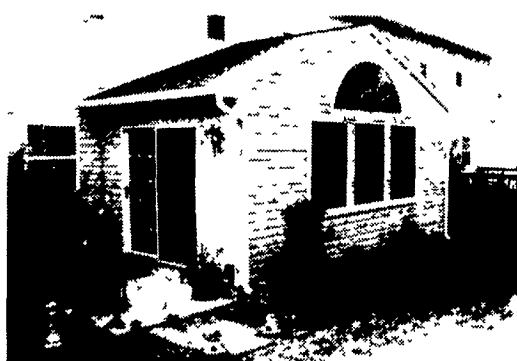


Call Today For A Free Estimate

265 E. Meadow Valley Rd., Lititz, PA 17543

717-733-7160 - 1-800-247-2107 - 717-627-6886

Financing Available



Room Additions, Sun Rooms, Decks, Garages, Etc.



pick up the

STIHL

POWER

Are you ready for a STIHL?

FS 250
Trimmer/
Brushcutter

\$439⁹⁵
Bike Handle

MS 290
Farm Boss
Chain Saw

\$299⁹⁵ SRP

16" Bar
56.5 cc, 3.75 bhp, 13.2 lbs

Available at these servicing dealers

<p>Abbottstown MESSICK'S 7481 Lincoln Hwy. Rte. 30E Abbottstown, PA 17301 717-259-6617 888-285-0225</p>	<p>Ephrata WES STAUFFER ENGINES & EQUIPMENT 23 Pleasant Valley Rd. 717-738-4215</p>	<p>Schaefferstown MARTIN'S EQUIPMENT CO. Rt. 501 1 1/2 Miles South of Schaefferstown, PA 717-949-6817</p>
<p>Allentown LEHIGH AG EQ. INC. 6670 Rupperville Rd. 610-398-2553 1-800-779-3616</p>	<p>Gap/Quarryville GAP POWER RENTALS >> PLUS Gap: 717-442-8970 Quarryville: 717-766-2221</p>	<p>Reamstown EAGLE RENTAL CENTER Rt 272, Reamstown Traffic Light 717-336-3945</p>
<p>Carlisle TRI-BORO CONSTRUCTION SUPPLIES 1490 RITNER HWY. 1-800-248-6590</p>	<p>Hummels Wharf HUMMEL'S TEXACO Rt. 11 & 15 570-743-7459</p>	<p>Shippensburg CEDAR GROVE FARM STORE 1120 Ritner Hwy. 717-532-7571</p>
<p>Dallastown TRI-BORO CONSTRUCTION SUPPLIES 435 Locust St. 717-246-3095 1-800-632-9018</p>	<p>Palmyra HERR'S REPAIR SHOP RD 2, Box 115A 717-838-1549</p>	<p>Waynesboro QUINCY HARDWARE & RENTAL CENTER 7421 Anthony Hwy. 717-749-3653</p>
<p>East Earl GOODS LAWN & GARDEN CENTER Route 23 717-445-4490</p>	<p>Peach Bottom A.K. SAW SHOP 214 Peach Bottom Road</p>	<p>Hagerstown, MD EBY'S LAWN & GARDEN 16409 Fairview Road 301-733-4158</p>
<p>Elizabethtown MESSICK'S 187 Merts Drive (Rheems exit of Rt. 283) www.messicks.com 717-367-1319, 800-222-3373</p>	<p>Pequea DREXEL AUTO SUPPLY 333 Steinman Farm Road 717-284-2916</p>	<p>Cockeysville MD SUBURBAN SALES 10757 York Rd. 410-785-2277</p>

DISTRIBUTED BY NORTHEAST STIHL

