

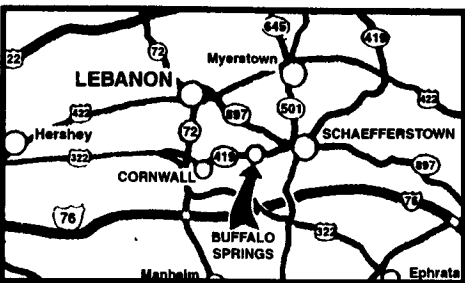
www.kbford.com

Your Internet Connection

SPECIALIZING IN NEW & USED SUPER DUTY PICKUPS

KELLER BROS.

(Buffalo Springs) Lebanon, PA
717-949-2000 or 1-800-363-2767
LEBANON COUNTY'S HEAVY DUTY TRUCK HQTRS.



FAMILY OWNED AND OPERATED FOR OVER 80 YEARS

Over 100 Clean Pre-Owned Vehicles in Stock At All Times!!

2000 FORD F250 CREW CAB XLT LONGBOX
 V10, AT, A/C, PW, PL, 1 Owner
\$21,995



1997 FORD F250 REG. CAB 4x4 XLT
 7.3 Turbo Diesel, 5 Spd., A/C, PW, PL, Clean - One Owner
\$18,995



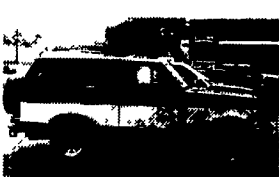
1996 TOYOTA 4-RUNNER
 V6, AT, A/C, PW, PL, 4x4, Local Trade
\$13,995



2003 FORD F250 SUPER CAB XLT 4x4
 5.4 V8, AT, A/C, PW, PL, Shortbed, 13,000 Miles
\$28,355



1993 FORD BRONCO XLT
 4x4, V8, AT, A/C, PW, PL, only 64,900 Miles
\$8,995



1997 FORD F150 SUPER CAB
 4x2, XLT, 5-Spd., A/C, PW, PL, T.C.
Only \$9,345



1995 Ford F350 S/C D.R.W.
 XLT, 460 V8, PW, PDL, Tilt, Cruise, Very Clean, Ready to Pull.
\$11,995



NEW 2003 FORD F350 CREW CAB
 V10, AT, Full Power, 4x4 Cab & Chassis Only.
\$28,400



2001 FORD F150 SUPER CAB LARIAT
 4x4, 5.4 V8, AT, A/C, PW, PL, Leather, 21,000 Miles, Fiberglass Cap
Only \$25,773



2001 FORD SPORT TRAC 4x4
 4.0L AT, A/C, PW, PL, Alloy Wheels, Sharp
Only \$20,773



1994 ISUZU TROOPER
 4x4, V6, AT, A/C, PW, PL, Runs Great
\$4,695



2001 FORD F250 CREW CAB 4x4
 7.3 Diesel, XLT, AT, A/C, PW, PL
\$31,995



2002 FORD F350 XLT CREW CAB DUALY
 7.3 Powerstroke Diesel, 6-Spd., A/C, PW, PL, only 9,800 miles
\$34,975



2003 FORD F350 CREW CAB XLT
 4x4, 6.0 Turbo Diesel, AT, A/C, PW, PL, Long Wheel Base. Only 2,000 Miles, Like Brand New.
SAVE



2001 FORD F350 XL Dump Truck
 5.4 V8, 5-Spd., AM/FM/Stereo Only 7,000 Miles. Ready to Work
\$25,900



1998 FORD EXPEDITION 4X4 EDDIE BAUER
 V8, A/C, Full Power
\$12,795



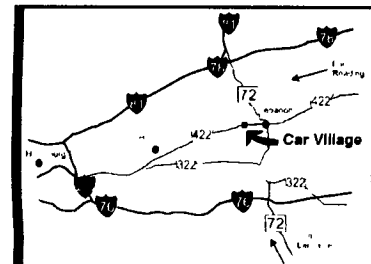
Nicest Trucks In the East • Nicest Trucks In the East • Nicest Trucks In the East • Nicest Trucks In the East • Nicest Trucks In the East • Nicest Trucks In the East

www.useddieseltruck.com

2300 W. CUMBERLAND ST. (Rt. 422)
 LEBANON, PA 17042
 (Across From Lebanon Valley Mall)

CAR VILLAGE

1-800-650-1420
 717-274-2000



6SP POWERSTROKE
99 FORD F250 SUPER CAB 4x4
 Work Style, Vinyl Seat & Floor, Only 53,000 Miles Powerstroke Turbo Diesel, 6Sp, A/C, Tow Pkg., Limited Slip Axle



DON'T BUY NEW LOOK AT THIS
2003 DODGE 2500 HEAVY DUTY CREW CAB
 Only 1,000 Miles, 24 Valve Cummins Turbo Diesel, Auto., Loaded Laramie SLT A Beauty and Only \$34,900



DIESEL CARGO VAN
2001 FORD F350 SUPER CARGO VAN
 Only 40,000 Miles, Remainder New Ford Warranty, Extended Length, Powerstroke Turbo Diesel, Auto, AC, Limited Slip Axle Means Great Traction Tow Pkg



5SP POWERSTROKE
96 FORD F250 REG CAB 4x4
 You'll Like This One Only 36,000 Miles Powerstroke Turbo Diesel, 5Sp Manual Trans., A/C, Lock Out Hubs, Dual Tanks



\$7,900
95 FORD F250 SUPER CAB 4x4
 Heavy Duty 3/4 Ton 351 V8 Auto A/C Dual Tank, Tow Pkg., Local Trade



6 SP POWERSTROKE
2000 FORD F350 CREW CAB DUALY
 4X4 Gorgeous XLT LARIAT Powerstroke diesel Trailer Tow Pkg Alloy Wheels, & Plenty More Only 38,000 Miles



CUMMINS DIESEL
98 DODGE 2500 QUAD CAB 4x4
 24 Valve Cummins Turbo Diesel, Auto, A/C, Laramie SLT Pkg., 46,000 Miles, Very Nice
\$23,900



HEAVY DUTY CHEVY
2001 CHEVY 2500 HD PICKUP 4x4
 The Impressive Duramax Diesel, Allison Trans., A/C, Tow Pkg., Only 47,000 Miles



2000 FORD 350 SUPER CAB 4X4
 Power Stroke Turbo Diesel, Auto, A/C, Tow Pkg Very Clean Sharp
\$26,900



SHORTBED SUPER CAB
2001 CHEVY 2500 4x4
 Nice Driver, Very Clean Duramax Diesel, Allison Auto, Loaded, All Options, Alloy Wheel, Tow Pkg., Limited Slip Axle



\$12,900
WILL GET YOU THE NICEST
93 FORD F250 SUPER CAB 4x4
 7.3 Diesel, Auto, A/C, Loaded XLT Capt. Chairs, Console, Tow Pkg., Aluminum Wheels



6 SP CUMMINS
2002 DODGE 2500 QUAD CAB 4X4
 Very Strong Truck Loaded, Laramie SLT A/C, Overhead compass, Remaining Fact Warranty



5SP CUMMINS
98 DODGE 2500 QUAD CAB 4x4
 Heavy Duty 3/4 Ton Impressive Cummins Turbo Diesel, A/C, Tow Pkg



550 CHASSIS 4 WHEEL DRIVE
2002 FORD SUPER DUTY
 Like New, Only 9,000 Miles, Remaining New Ford Warranty, 165 W.B., 84" CA, Heavy 17,500 GVW



4x4 CREW CAB DUALY
2002 FORD F350
 Loaded XLT, PowerStroke Turbo Diesel, Auto, A/C, Comfortable 40/20/40 Seat, Alloy Wheels, Fact Tow Pkg Only 7,700 Miles



DIESEL 1 TON
2000 FORD F350 4x4 PICKUP
 Super Nice, 37,000 Miles, Powerstroke Turbo Diesel, Auto, A/C, Alloy Wheels, Loaded XLT



4 DOOR SHORTBED
2000 FORD F350 XLT 4x4
 Nice To Look At & Very Nice To Drive, Powerstroke Turbo Diesel, Auto, A/C Loaded XLT, Alloy Wheels, Tow Pkg



HEAVY CHEVY
2001 CHEVY SILVERADO 3500 4 Wheel Drive
 Gorgeous - Like New Only 12,000 Miles Remain New Tx Warranty, 8100 Vortec V8 Auto, A/C, Limited Slip Axle, Very Strong Great Tow Machine

FLATBEDS, WORK & DUMP TRUCKS



02 GMC 4X4 DUMP
 Like New, Only 7,000 Miles, New GMC Warranty 6.0 Litre Vortec V8 Auto, A/C, L-Pak Tool Box Roll Back Tarp
\$27,900



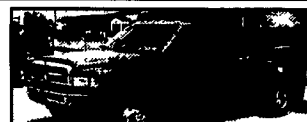
2003 GMC 4500
 16 Foot Steel Flatbed Only 1,700 Miles, Like New with GMC Warranty, Duramax Diesel Allison Auto, AC, Priced Real Right, \$29,900



17 FOOT CUBE VAN
97 FORD E-450 SUPER DUTY
 Heavy 14,000 GVW, Rear Lift Gate, Powerstroke Turbo Diesel, Auto, AC, Local Trade, Only 68,000 Actual Miles



STAKE BODY 2001 CHEVY 3500
12 FOOT BODY
 Great Truck Around The Farm, 6.0 Litre V8, Auto, A/C, Only 45,000 Miles, 4 Wheel Disc Brakes, Locking Differential



4x4 Dump Truck
2000 DODGE 3500
 Cummins Turbo Diesel Auto, AC, Only 43,000 Miles, Very Clean Runs Strong



650 FLATBED 2000 FORD SUPER DUTY
 Only 2,000 Miles, 28,000 GVW, Under CDL License, 3126 Cat., 6 Sp., 14 Ft. Stahl Body, Priced Right \$31,900



REAR LIFT GATE
97 FORD E-450 SUPER DUTY
 1 Owner Trade, Powerstroke Diesel, Auto, A/C, 17 Foot Aluminum Body



FARMERS FRIENDS
88 DODGE
 Only 80,000 Miles, 360 V8 Auto, 3yd Dump, Runs Well,
\$7,900



550 CREW CAB
 4 Wheel Drive, Rare Find Made For The Big Loads, Powerstroke Turbo Diesel, Auto, A/C, Eby Aluminum Bed, Gooseneck hitch



Equipment Hauler
93 FORD F-450 SUPER DUTY ROLLBACK
 Just what you need, 18 Foot Jerr-Dan Bed, Brand new wood floor, Diesel Power, AC, Loaded XLT



SUPER CAB DUMP
2000 FORD F350
 A Very Desirable Truck, Clean, Only 65,000 Miles, V10, Auto, A/C, 9 Ft. Body, Insp. & Services
\$22,900



550 SUPER CAB 4x4
2002 FORD SUPER DUTY
 Rare Find, Only 22,000 Miles, Powerstroke Turbo Diesel, 6 Sp., Loaded XLT, Steel Flatbed, Gooseneck & Class 3 Hitch



350 4 DOOR CHASSIS, 4 WHEEL DRIVE.
2001 FORD XLT
 Waiting for your Body, Only 19,000 Miles Powerstroke Auto, A/C, Heavy, 11,500 GVW, Dual Ram Wheels.



ENCLOSED UTILITY
95 FORD 450 SUPER DUTY 9 FOOT BODY
 Powerstroke Turbo Diesel, 5Sp, A/C, Only 39,000 Miles, Very Clean



2003 FORD 750 CHASSIS
 Only 11,000 Miles, 33,000 GVW, Diesel Power, 7 Sp Trans., A/C, 2 Fuel Tanks, Brand New, Dealer Cost \$38,800 Our Price \$35,900

Nicest Trucks In the East • Nicest Trucks In the East • Nicest Trucks In the East • Nicest Trucks In the East • Nicest Trucks In the East • Nicest Trucks In the East