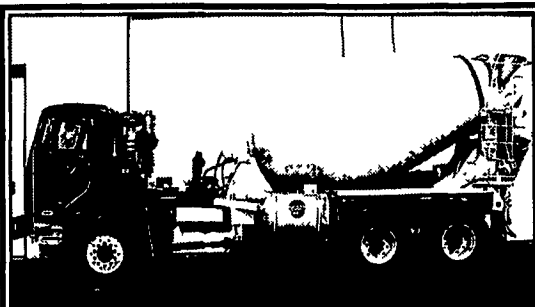


Chevy Engines New & Reman
Tractor, Backhoe, Loader,
Engines Rebuilt
717-762-6415



1996 Peterbilt LCF 320 Mixer Truck, Cat 3306 Eng. 300 HP w/Turbo, 6x6, 10 Spd. Eaton Fuller Trans, 46,000# Rears, 445/65R22.5 Tires @ 60%, Smith 10.5 Cu. Yd. Mixer, \$19,500

Weaco Equipment

4009 Conrad Weiser Parkway Womelsdorf, PA 19567 **610/589-5555**

35 TRUCKS AND TRAILERS



1985 International Cargo Star, 192,000 Miles, 22,500 GVW, 7.3L Diesel, Auto, Cab & Chassis

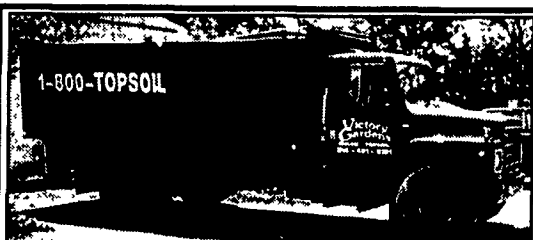


1994 International, Cab & Chassis, DT 466, 210 HP Eng, 6 speed Trans., AC, PS, Full Air Brakes, Looks new & Runs New! 33,000 GVW



1995 International 8100, 32,000 GVW, 453,000 Miles, L10 Cummins Diesel 300 HP, 9 Spd Trans, Spring Suspension, Air Brakes, 295/75 R 22.5 Tires on Budd Wheels, White Conventional Cab, P/S, A/C, Heated Mirrors Must Sell!

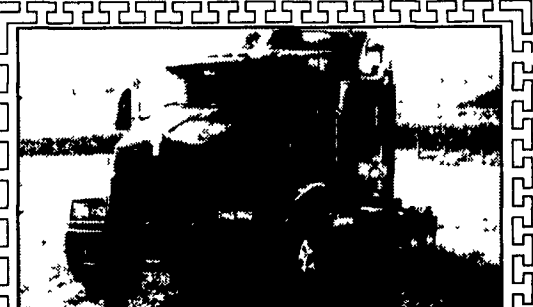
**Phone 717-664-1696
CHARTER ENTERPRISES, LTD.
270 Hostetter Road, Manheim, PA**



**'79 International Grain Body Dump, 466 Diesel, 5 Speed, Truck Runs Good,
\$4,000
215-603-0500**



**88 Kenworth T-600
Cat Power w/98 Fontaine
55 Ton Tri-Axle Trailer
\$29,500
Weaver's Truck & Equipment
570/523-9598**



**'96 KW T600 72" Adynel Acab, 3406 E., 550 HP, 15 Speed, Wet-Line, 780K Mi., all Aluminum Wheels, Tanks, Lan. Co.
(717) 665-6647**

35 TRUCKS AND TRAILERS

Trinity self unloading belt trailer, will unload bulk or thru grain door. Robert McSparran Jr @ 410-778-1403

1990 Int 9300 tri-axle, 400 Cummins, 19.5ft alum bed, \$10,000. 814-267-6879

(14) Box vans for sale from \$3900 to \$29,000. Good cond. Call Jim @ 814-342-6220

Rims & Tires, 10 Lug Alcoa 11R24.5 Rims (2) \$150/ea. New caps LT215/85R16. New caps 750.16ZT. New caps 1000R22 w/rim alum bud. New cap 285K/75R24.5. New cap 1100/20. Used tires 1100R20, 1000-20, 900-20, 11r24.5, 1000r20. Offers wanted on all caps & used tires must sell, need room. 717-469-0039 daily Mon thru Fri, 8-5.

95 Pete 377 435 Cat 10 sp, 48" sleeper, 10 alum wheels, wet line, \$18,000/obo. 410-836-1063 or 410-446-2106. Also 98 TILite 39' frameless alum dump trailer, air ride w/ Sherlock tarp, no dents. G cond, \$20,000/obo

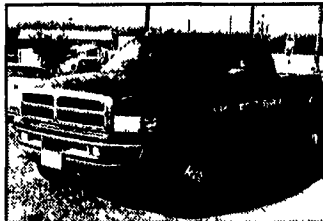
(2) Mack trucks, (1) R-600 tandem dump w/14ft steel body, 1974, \$3500 obo. (1) R-685 tandem tractor w/1979 300 eng, \$5000 obo. (1) flat tandem slider trailer, 5ft sides w/ canvas rack, \$2000 obo. 609-758-6667

1988 Ford F450 super duty, 12' flatbed dump, 460, 5 spd, 87K mi, \$8,000. York Co, 717-792-2751

1981 GMC General truck tractor, air ride, Det 445 eng, 9 spd trans, 2 line wetline, good rubber, \$3,500. After 6pm, 908-362-9521.

'91 TRAILMOBILE trailer, 48'x102', good cond, \$5,000/obo. 717/776-5054.

Diesel Owners!
Get HP & Fuel Mileage



We Have Performance Chips For The Following:

- Dodge Cummins 40-120 HP + 175 Ft. lbs. More Torque
- Chevy Duramax 70-210 more HP up to over 400 lbs. of Torque
- Ford Powerstroke 60 - 80 - 120 add more HP up to 200 lbs. of Torque
- VW TD 35 more HP add up to 35 + 45 lbs. of Torque

Free Installation 2003 Performance Chips & Exhaust are here & in stock!

We carry complete line 4" exhaust systems for... \$550
*Torque Converters *Valve Bodies *Exhaust Brakes *Gauges *K&N Air Filters

You Get More Horsepower & Torque

**We Carry The Best Stuff For Your Truck
Propane For Diesel - Nitrus For Diesel**

(717) 249-2255 *Call Now!!! Ask for Shawn*

LIBERATOR PERFORMANCE

1970 Spring Road, Carlisle, PA 17013

Sales, Service & Inspection

Call About Our Gas Chips

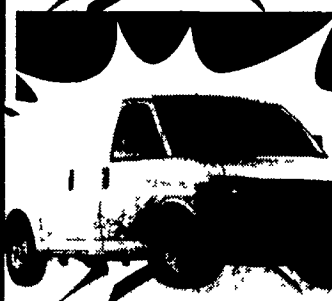
Better Fuel Mileage

LIGHT DUTY COMMERCIAL TRUCKS **TRUCK SURPLUS SELL-OFF**

"We are professional grade."



ALL 2003 MODELS MUST GO!



'03 GMC SAVANA 2500 CARGO VAN

\$17,750

0%
for 60 months on all

'03 GMC 4500 12 FT. DUMPING LANDSCAPE BODY

\$37,690



'03 GMC 3500 DUMP BODY 4X4

\$28,550

2003 COMMERCIAL VEHICLES

'03 GMC SAVANA 3500 CARGO VAN

\$19,950



'03 GMC SIERRA 2500 SLT EXT CAB 4X4

\$29,950

0% Financing in lieu of rebates expires 9/3/03

'03 GMC SIERRA 2500 HD EXT CAB

\$33,550

TONS OF VANS!
Ready for immediate delivery!
1/2 ton • 3/4 ton • 1 ton
Regular & Extended Lengths

SPECIAL COMMERCIAL FINANCING AND GMAC LEASE PROGRAMS NOW AVAILABLE
HOURS: Mon-Thurs 9am - 5pm, Fri 9am - 5pm, Sat 9am - 5pm

610-363-7790

WWW.COLEYPONTIACBUICK.COM
e-mail: JcoleyPBG@aol.com

Bob Kayes - Commercial Truck Sales and Leasing

610-517-3428
Direct Line

421 W. LINCOLN HIGHWAY, EXTON
(Route 30 - Across from Applebee's)



*All prices include applicable taxes, subject to change without notice. Tax, tags & registration fees additional. See dealer for details. All prior sales excluded. Not responsible for errors and omissions. Photographs for advertising purposes only. Rebates and special financing expires 9/3/03.