

35 TRUCKS AND TRAILERS

01 Moritz18' trailer like new \$2300 717-248-1684
79 Int'l tri-axle dump truck, 400 Cummins eng, \$8,900; 70 Int'l single axle dump truck, \$1,200, 610/987-6136

01 Ford F-250 XLT Pwr stoke dsl, crew cab, short bed, auto, True blue & grey, trailer pkg 20k mi nice truck 4yr warranty, \$29,500 717/721-9217

'83 IH DT466, 52,000 GVW, 29ft flatbed, 333,000 mi, good cond, \$7500, 717-677-6816 lv msg

1973 Ford 9000 92 series 13sp 10ft alum dry line spreader, auger, booms \$5500 717-733-0724

14ft Stoltzfus lime spreading box, ex cond, \$2500, 717-278-5261

1988 Peterbilt 3306 Cat, w/hyd 5th wheel, \$6,000
1990 Peterbilt, mdl 377, 3176 Cat, air ride, \$4,000
717-295-2442 ext 119

95 Int'l Eagle w/sleeper gd cond, \$9,000/OBO, 877-41-MULCH or 410/335-0400

(2) Storage trailers, 35ft & 40ft., \$700/ea obo 717-939-3288

1990 L8000 Ford truck \$10,000/obo, 410-452-8487

1984 Ravens 38ft dump trailer, alum, framless, spread axle, 2 way gate w/tarp & liner, 717-656-3745

2) 40' van storage trailers, 10x45 office trailer, 36' Citation camper, 20' enclosed work trailer, Prices \$500-\$1,000/ea, 717-464-4461.

1950 Chevy 5 ton w/dual wheels, parts or restore, \$250 obo. 1970 VW Bug, parts or restore, \$150 obo. 814-623-8808.

'99 Ford F-350 XLT, single wheel, dsl, 6 spd, gooseneck & receiver hitches, 64,000 mi, \$20,000, 610-287-0410

2000 Ford F350 dually dsl, 6 spd, XLT, 4x4, loaded, 60k, \$26,500; 717/292-9274

92 GMC single axle dump, contractor dump body, Ex cond, \$11,500/obo, 410-399-2215 aft 6pm

42' walking floor, roll tarp, air ride, good cond, 717-535-5711.

'97 Ravens dump trailer, frame 40'6", 39' box, 78" sides, spread axle, new virgin tires, exc cond, \$27,000, 717-587-3108 Lancaster Co.

1974 Wilson 42ft Live-stock trailer for cattle or hogs, \$2,500, 717-872-8508

1973 Int'l single axle, 5 cyl, dump truck, runs, \$700 + batt. 65' crane boom, \$1,600, 215-886-5000.

1991 Chevy Suburban 4x4, 8 pass, 141k miles, new tires, ex running cond, \$5000, Call Camp-ground 717-789-2117

'98 Chevy Cheyenne 2500, HD, 3/4 ton, 4x4, 350 auto, PS, PB, cruise, tilt, air, 8,600 GVW, 79,000 miles, new radials, dark green, \$12,500, 717-733-2873

'00 GMC SLE 1500 4x4, 4.8 V8, 5 spd, PS, PB, PW, PDL, cruise, tilt, air, Am-Fm CD, 84,000 miles, new radials, burgundy, ex condition, \$11,900, 717-733-2873

'98 GMC SLE 1500, 4x4, extended cab, long bed, 350 auto, PS, PB, PW, PDL, cruise, tilt, air, Am-Fm cassette, 87,000 miles, new radials, burgundy, \$13,500, 717-733-2873

'00 Dodge 1500 Quad Cab, 4 Dr., 2WD, 360 auto, PS, PB, cruise, tilt, air, 6,400 GVW, 58,000 one owner miles, dark blue, \$12,900, 717-733-2873

'00 Chevy S10 extended cab LS, 2WD, 4 cyl, auto, PS, PB, cruise, tilt, air, 47,000 one owner miles, new radials, \$7,950, 717-733-2873

'97 Chevy Cheyenne 2500, extended cab, 2WD, 350 auto, PS, PB, cruise, tilt, air, AM-FM Cass., towing package, 8,600 GVW, 63,000 one owner miles, \$10,900, 717-733-2873

1986 DM Mack, long WB w/ log loader, 610-944-9871, 610-858-4092

SAVE. STORAGE OR ROAD TRAILERS, 20' or 40' GROUND LEVEL CONTAINERS. PROMPT & COURTEOUS SERVICE. REASONABLE RATES. YOUR STORAGE SOLUTION, INC. 610/921-1955, 1-800/220-6082

'68 Chevy grain truck, tandem axle, 15 ton, newer eng, mechanically perfect, endgate for silage or grain, \$5500 obo, 610-845-2443

'94 Transcraft, 48ft air ride, 10ft spread, 96"V, 80,000 GVW, side kit, \$5500, 717-865-6860

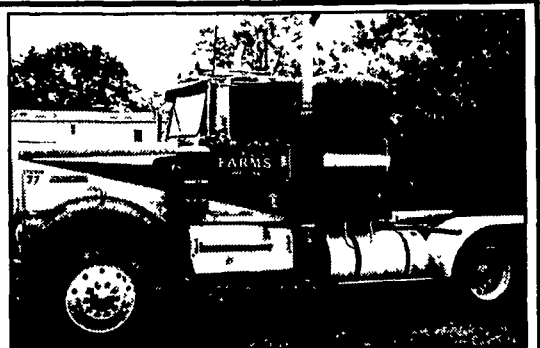
-5,000 gal Tri Axle Manure Truck, 86 Auto Car, 350 Cummins, 8LL Trans, 20&44 rears, on Hend Spng Susp, 425.65.22.5 tires all around, 9" blower for pressure vac. 3 8" valves, field ready 717/365-3704

1988 Valley stock trailer, 18' bumper hitch, \$2,300, 610-383-0550.

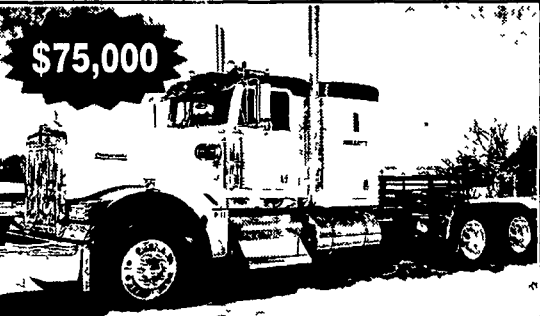
1992 GMC Topkick 16ft body, diesel, auto, only 68k miles, v. good; 1993 Mack Cabover tk, 22ft manager series, diesel, nice, both van bodies, 570-648-8075.

'73 Int'l 1910 series dump trk, 58,000 GVW, 549 gas motor, \$7500 obo, 717-229-2633

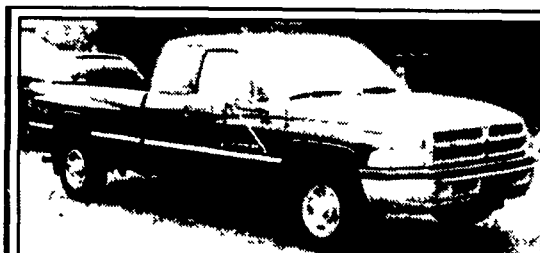
1985 LTL 9000 tri-axle, 3408 cat, 8LL trans, 46 rears, 18.5ft alum body, elec tarp system, \$16,900/obo 570-889-3859



'77 Kenworth, 400 Cummins w/Jake, runs good, \$8,250. 717-776-9910 for more info or 717/443-3786 (cell)



2002 Kenworth W900L Extended hood C15 Cat 550 hp, 18 spd Engine Brake, 13 2k Front 44k Rear Air Glide Suspension 3.90 Ratio 260" WB, 36" Flat top 24 5 All Aluminum Wheels Texas Bumper Visor, dual air cleaners 119,000 mi, white w/green fenders and roof Call 410-775-9978



1995 DODGE SLT 2500 EXTENDED CAB, 2WD, V10, 5 Speed, PS, PB, PW, PDL, Cruise, Tilt, Air, 8,800 GVW, 410 Ratio, Limited Slip Diff., 36,000 One-Owner Miles, Ex. Cond., Dark Green \$10,500

A&J AUTO SALES
798 E. Main St., Rt. 322 East, Ephrata, PA 17522
717-733-2873

LEED TRUCK CENTER
402 South Chiques Rd. Salunga Exit, Route 283 717-898-1200

85 MACK MS250, 6 Cyl Turbo Diesel, 5 Spd P/S A/B 32 900 GVW 20'X91" Morgan Van Body with CSD & RSD Clean for Yr	92 FRTLNR FLC Conv Day Cab 11 0 Liter Series 60 DD 350HP 9 Spd P/S A/C Eng Brake Spring Susp Insp Very Clean
85 MACK MH613 C.O.E. Tandem Axle Mack 350 9 Spd P/S A/C Spring Susp. 11R2 5 Clean Radials	95 FORD L7000, 5.9 Liter Turbo Diesel 5 Spd, P/S A/B A/C Non CDL, 26,000 GVW 20 Morgan Reefer Body, with KD-II Ref Unit New Insp Very Clean

Call for Details \$6,900
Priced to Sell Priced To Sell



2002 Nissan UD
w/14' Service/Van body w/Roll-up Rear door, Work Benches & Outside Tool Boxes, Auto Trans., PS, 14,000 GVW, AM/FM/CD. \$34,749

1999 CHEVY 1500 EXPRESS CARGO VAN, AT, A/C \$8,500

1997 Fruehauf Box Trailer
53 ft Long, 102 in Wide, 13 ft 6 in High, Translucent Roof

1991 Nissan UD
6-speed, 190 HP, 16ft Van Body, New Inspection, Ready to Work! \$7,900

1995 Nissan UD 2600
Diesel, 25,950 GVW, 6-Spd, 18 Ft Van Body, 135,000 Miles \$21,900 \$17,900

New 2003 UD Trucks In Stock
Stake Dump, Dry Freight Body

INTERNATIONAL CENTRAL GARAGE, INC.
South 2nd St. (Rt. 419) Womelsdorf (Berks Co.) Pa. 610-589-4501 or 800-460-4501

Weaver Distributing Warehouse Direct To Your Door!

Trailer Hitches Class 1 thru 5	Brake Controls \$49 - \$125
Pintle Hooks and Accessories	Bike Racks \$64.99 & UP
Triple Tow Mounts Black or Chrome balls \$35.95	Cargo Carriers \$79-\$95
Quic Goose Gooseneck Hitch \$299	Adjustable Ballmounts \$39.95 & up

Free shipping for most orders
Call For a Free Catalog 1-800-932-8373
1-800-WEAVER-D
Weaver Distributing 125 Blue Mountain Road Fredericksburg PA 17026

ATTENTION TRUCKERS and MECHANICS!
Are You Getting The Best PTO At The Very Best Price? Compare

to what you are now using!

- Cast iron output flange w/heavy duty double lip seal, reinforced heavy duty studs and Nyloc nuts. Supports heavier hanging pump weight.
- Higher torque spur gears.
- Larger output load bearing and larger diameter output shaft.
- Heavy duty cast iron housing with all tapered roller bearings. Lower profile.

Beiler Hydraulics, Inc.
HYDRAULICS • PNEUMATICS • POWER TRANSMISSION
440 Concrete Ave • Leola, PA 17540 • 717-656-4878 • Fax 717-656-4682

Est. 1979