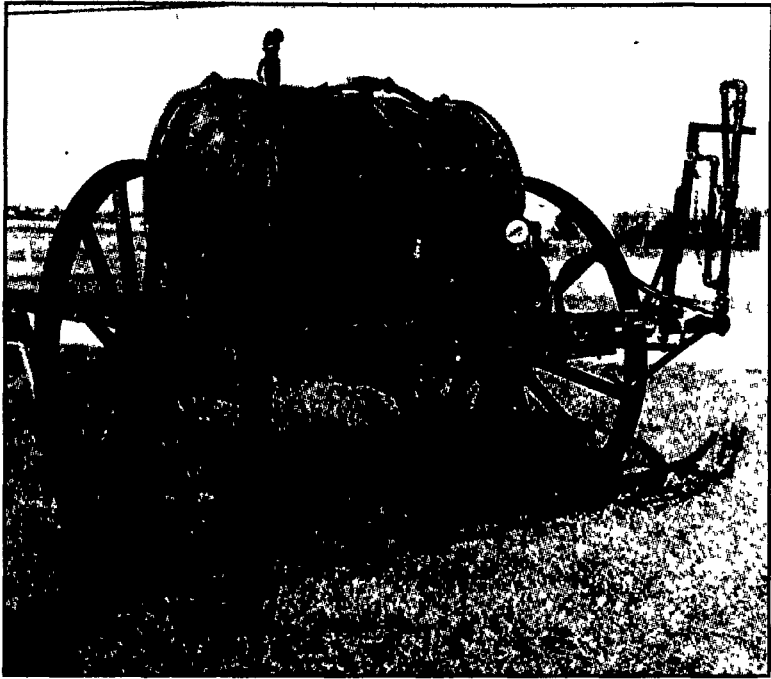


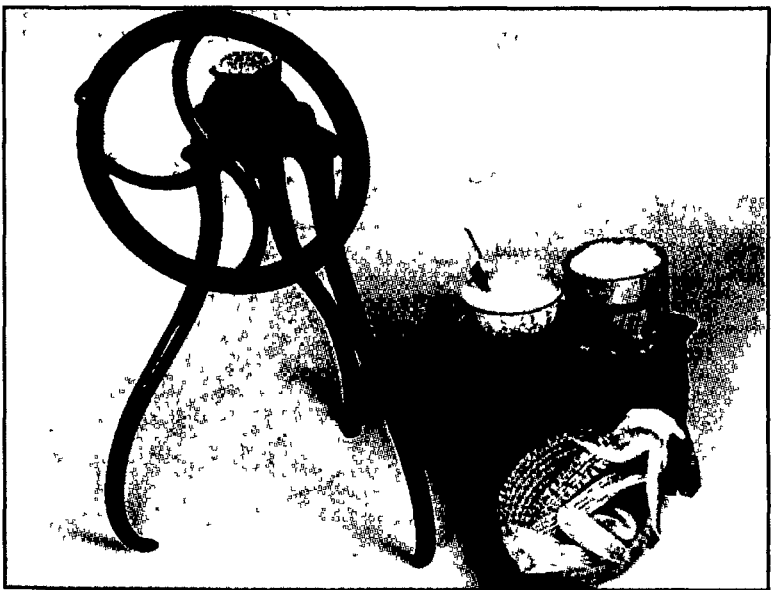
Lancaster Farming *Antiques Center*

Museum Showcases Agricultural History

Free Admission To Special Museum Exhibit During Ag Progress Days Aug. 19-21



Horse-drawn "Yellow Jacket" potato sprayer after disassembly, cleaning, and oiling. Painted emblems on each end of tank: "Field Force Pump Co. The Leader 'Ospramo' Line of Sprayers Elmira, NY." Nine brass spray nozzles each have a patent date of Dec. 14, 1911. Wooden wheels are 50 inches in diameter.



Cast iron cornmill is adjustable, for grinding corn into flour, meal, or chick feed. Made by F. Wilson, Easton. Pat. US Aug. 30, 1881, Canada, Aug 26, 1882. The mechanical usefulness of this hand-operated mill ended by the 1930s. However, its beautiful design has given it enduring value. The mill was donated to the Pasto Ag Museum in 1993 by Philip Mitchell.



The Galloway Pat'D Spreader after complete disassembly, cleaning, and oiling is pulled by two large horses, the box is removable so the heavy duty running gear can be used for other purposes. Cast iron drive gears 30-inch diameter are clamped to the inside of each rear wheel. Front end gate is removable with original stenciling. "Detachable Power Feed." Purchased new in 1920, it was last used in the early 1940s and stored under cover when "the boys went to war (WWII)."

ROCKSPRING (Centre Co.) — History on display takes viewers back in time during Penn State's Pasto Agricultural Museum's 25th anniversary.

During Ag Progress Days, Aug. 19-21, the museum will feature a special exhibit titled "Twenty-Five Years and Growing." Twenty-nine photographs and accompanying text will illustrate the growth of the museum's collection to more than 900 items since 1978.

The idea to gather and preserve pieces of agricultural history began in 1974 with the College of Agricultural Sciences Alumni Society, according to the museum's volunteer curator, Darwin Braund. With \$1,500 and a few display cases in the Agricultural Administration Building, the Pasto Agricultural Museum was born.

In May 1978, the Ag Alumni Society decided to move forward with a building project, and a year later the building at Rockspring was dedicated. It was officially opened to the public on Aug. 22, 1979 during Ag Progress Days.

Starting with an initial collection of about 150 items, the total collection of more than 900 items far exceeds available exhibit space in the museum.

"In honor of our 25th anniversary, many larger items, including several horse-drawn vehicles, will be moved from storage and displayed in an adjacent tent," said Braund. "Less than two-thirds of the collection can be exhibited in the museum at any given time."

In 1980, the museum was named for its first curator, Dr. Jerome K. Pasto, associate dean emeritus of the college and professor emeritus of agricultural economics. In 1998, Darwin Braund, professor emeritus of animal science at North Carolina State University and 1956 Penn State alumnus, took over as curator.

The Pasto Agricultural Museum serves between 8,000 and 10,000 visitors per year. Visitors during the 2003 Ag Progress Days who sign the guest book will receive a special bookmark.

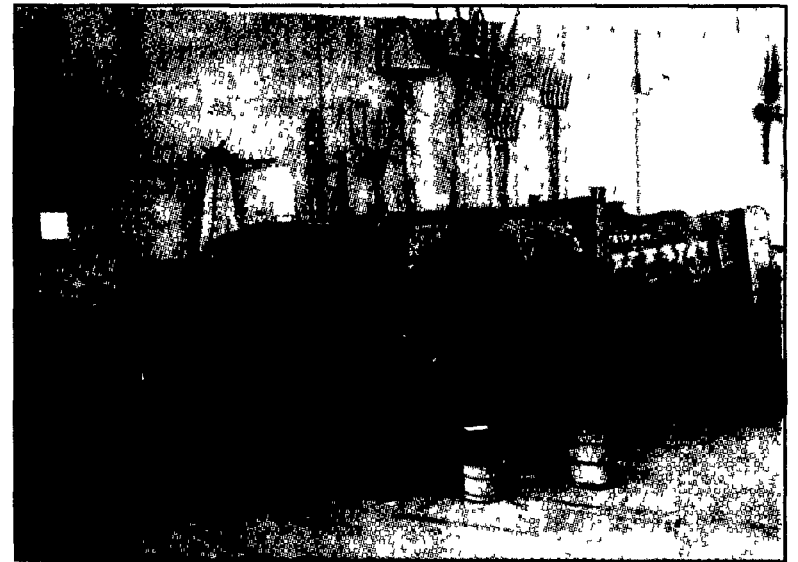
Tours can be scheduled from April 15 through Oct. 15 by calling (814) 863-1383, by sending an e-mail to pastoagmuseum@psu.edu, or by registering on the Web at <http://pasto.cas.psu.edu>.

Penn State's Ag Progress Days is conducted at the Russell E. Larson Agricultural Research Center at Rockspring, nine miles southwest of State College on Rt. 45. Hours are 9 a.m. to 5 p.m. on Aug. 19; 9 a.m. to 8 p.m. on Aug. 20; and 9 a.m. to 4 p.m. on Aug. 21. Admission and parking are free.

For more information, call (800) PSU-1010 toll-free now through Aug. 21 or visit the Ag Progress Days Website at <http://apd.cas.psu.edu>.



Made by Schaeffer, Merkle, and Company this one-horse tread power "The Buckwalter Champion" thresher is on display at the Pasto Agricultural Museum.



Schaeffer, Merkle, and Company's "The King" thresher is showcased in Pasto Agricultural Museum.

Pasto Agricultural Museum 25 Years And Growing

- 1974 — Dr. Russell B. Dickerson donated over 100 items from his collection for exhibit in the Agricultural Administration Building.

- 1974 — Ag Alumni Society began project to gather and preserve pieces of agricultural history; Antique Tools Committee formed with Dr. Jerome Pasto, chair.

- 1978 — Ag Alumni Society Board of Directors decided on May 6 to build museum.

- 1979 — Museum building dedicated May 5.

- 1979 — Museum officially opened to public Aug. 22 during Ag Progress Days.

- 1980 — Museum named after Dr. Jerome K. Pasto who was the first curator.

- 1988 — Collection expanded to nearly 400 items and exceeded museum space; storage facility provided by college.

- 1998 — Weathervane from old dairy barn on campus restored and mounted on museum

entrance.

- 1998 — After twenty years as volunteer curator Dr. Jerome Pasto turned curatorial responsibilities over to Dr. Darwin Braund.

- 2000 — First themed exhibit, Role of Animal Power in 19th and 20th Century Agriculture.

- 2000 — Horse (mule) powered hay baler (1905) demonstrated by donor Dr. Robert Cowan and three generations of his family.

- 2001 — Second themed exhibit, 6,000 Years of Small Grains.

- 2002 — First endowed exhibition, Early Farm and Home Pork Processing and Preservation, supported by the P. Thomas Ziegler Endowment for the Pasto Agricultural Museum.

- 2002 — Museum collection exceeded 900 items.

- 2003 — Silver Anniversary 25 Years and Growing — Since 1978.