

Eastern Shore Championship Holstein Show Post Winners

CENTREVILLE, Md. — The 2003 Eastern Shore Championship Holstein Show took place, July 14, at the Queen Anne's County 4-H Park. Kelly Myers-Zepp of Carroll County judged a total of 73 entries.

Junior champion of the open

show was awarded to Pintail Point Charlene-Red-ET, exhibited by Pintail Point Farm of Queen Anne's County. Reserve junior champion of the open show and junior champion of the junior show went to Bulldog Exhibit Etta-ET, exhibited by Logan

Moore, Queen Anne's County. Reserve junior champion of the junior show was Greenwood Acres Leduc Maggie, exhibited by Brooks Kennedy of Kent County.

Senior champion of the open show was Welk-Shade Storm Candy, exhibited by Pintail Point Farm of Queen Anne's County, Rocky-Mount Dur Francine, exhibited by Kristen Tolson of Kent County was reserve.

Senior champion of the junior show was Tri Dee Counselor Fergie, exhibited by Caleb Rossing of Queen Anne's County, reserve senior champion of the junior show was Greenwood Acres Durham Haven, exhibited by Marshall Taylor of Kent County.

Class winners in the open show are as follows:

EASTERN SHORE HOLSTEIN SHOW RESULTS

Spring heifer: 1. Pintail Point Farm. 2. Gary Horton. 3. Marshall Taylor.
 Winter heifer: 1. Pintail Point Farm. 2. Parker Welch. 3. Brooks Kennedy.
 Fall heifer: 1. Logan Moore. 2. Doug and Joan Seidel. 3. Shana Dean.
 Summer yearling: 1. Hollingsworth/Raggi. 2. Caleb Rossing. 3. Kristen Tolson.
 Spring yearling: 1. Brooks Kennedy. 2. Ashley Taylor. 3. Patrick Welch.



Open show senior champion exhibitors with judge Kelly Myers-Zepp, left, and Eastern Shore Dairy Princess Katie Mason, right, are Kristen Tolson, reserve champion, and Joan Seidel, champion.

Winter yearling: 1. Parker Welch. 2. Jennifer Dudkewitz. 3. Caleb Rossing.
 Fall yearling: 1. Caleb Rossing. 2. Bradley Palmatary. 3. Laurel Moore.
 Junior 2-year-old: 1. Marshall Taylor. 2. Brooks Kennedy. 3. Parker Welch.
 Senior 2-year-old: 1. Pintail Point Farm. 2. Hollingsworth/Andrew. 3. Caleb Rossing.
 Junior 3-year-old: 1. Kristen Tolson. 2. Pintail Point Farm.
 Senior 3-year-old: 1. Pintail Point Farm.
 2. Caleb Rossing.
 4-year-old: 1. Fran Bar Farm, Moore Family. 2. Wil-O-Mar Farm, Schrader Family.
 5-year-old: 1. Gary Yorton. 2. Krsten Tolson. 3. Matt Fry.
 Cows over the age of 6: 1. Emily Yeiser.
 Production: 1. Hollingsworth/Covey.



Junior show senior champion lineup, from left, Kelly Myers-Zepp, judge; Marshall Taylor, reserve champion; Caleb Rossing, champion; and Katie Mason, Eastern Shore dairy princess.

PDA Releases New Farm Market Guide

HARRISBURG (Dauphin Co.) — To boost consumer awareness of farm-fresh fruits and vegetables offered in the state, Agriculture Secretary Dennis C. Wolff announced the availability of "A Consumer's Guide to Pennsylvania Farm Markets" while visiting the Pennsylvania Open-Air Farmers Market on the grounds of the Pennsylvania Farm Show Complex in Harrisburg.

"These markets provide the

perfect opportunity for people of all ages to enjoy the tastes of Pennsylvania's finest," Wolff said. "I encourage all Pennsylvanians to take advantage of these venues, as well as the opportunities that are available for seniors and WIC participants to purchase produce through our Farmers Market Nutrition Program."

From late spring to early autumn, bustling produce markets can be found throughout the

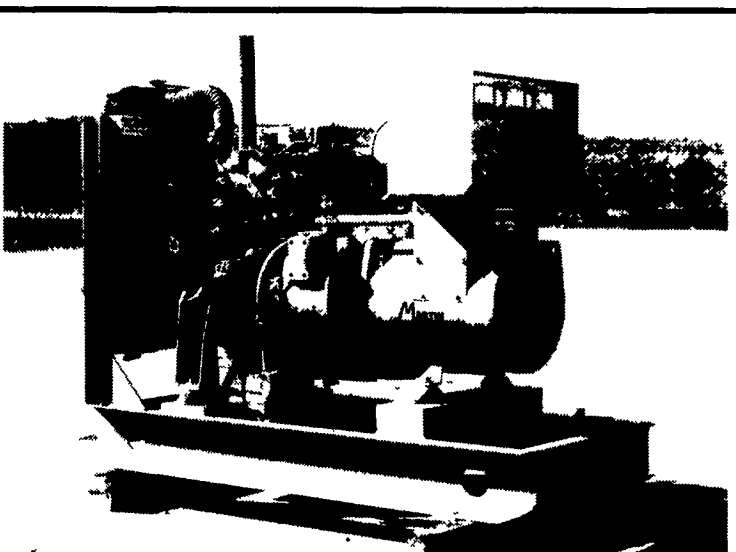
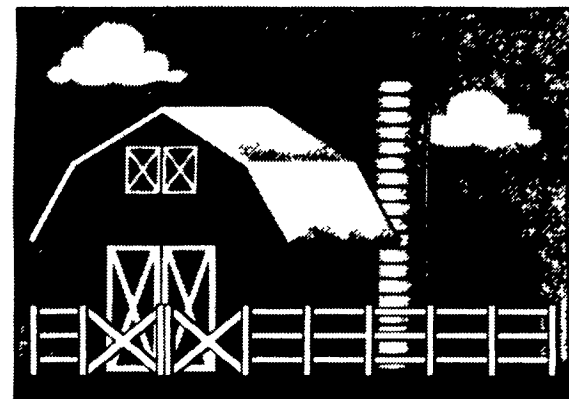
Commonwealth. These farmers markets and roadside stands play an important role in the patchwork of communities throughout the state. They provide a place for neighbors to buy fresh, locally grown fruits and vegetables while boosting the farmers' share of consumers' food dollars and growing the rural economy.

Wolff explained that the Department of Agriculture recognizes that there are members of the community who are less able

to enjoy Pennsylvania's local bounty.

"The Pennsylvania Department of Agriculture (PDA) and local farmers and retailers have created a partnership that enables consumers to purchase fresh fruits and vegetables

through PDA's Farmers Market Nutrition Program," Wolff said. Since 1992, the Farmers Market Nutrition Program has enabled participants of the WIC Program to take advantage of the health benefits of locally grown Pennsylvania produce.



GENERATORS

Sales H Service H Rentals
 Complete Generator Systems
 PTO • Portables • 2-1600 KW

We Service It If You Have It,
 And Sell It If You Need It.

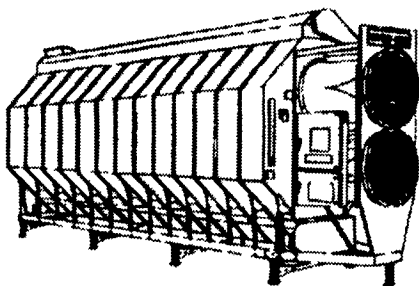


34 W. Mohler Church Rd.
 Ephrata, PA 17522
 Tel: 717-738-0300
 Fax: 717-738-4329

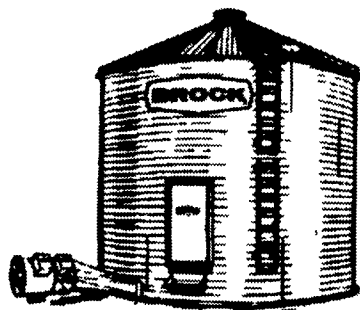


Systems, Inc.

1248 S Mountain Rd, Dillsburg PA 17019
 (717) 432-9738 www.tamsystemsinc.com

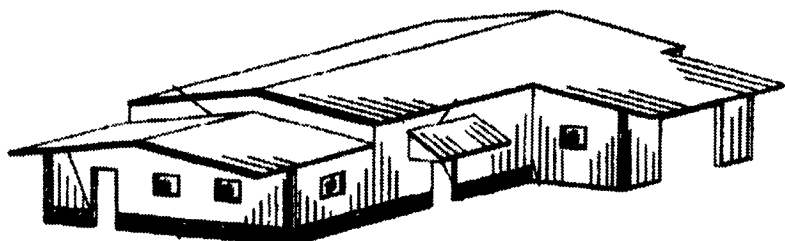


FF FARM FANS
GRAIN DRYERS



BROCK
 GRAIN & FEED SYSTEMS

CHIEF
 CHIEF INDUSTRIES, INC.



See us at AG Progress Days
 East 5th Street • Aug. 19, 20 & 21