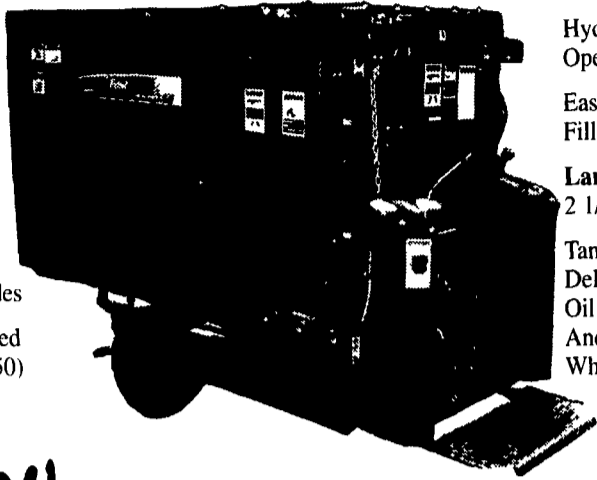


See us at **AG PROGRESS DAYS** for ... **MONEY SAVING BARGAINS!**

V-TWIN FAST FEED TMR MIXER **FEED THE TRUE T.M.R. AND DO IT FAST**

Double Mixing and Unloading Speed
HD 78 Chain - 24,000 Lb Tensile Strength
Wider Magnet and Discharge Chute
UHMW Chain Guides
12 Hay Knives Bolted to Floor (Model 3050)



Hydraulic Door Opener
Easy Access to Filler Cap
Larger Fuel Tank - 2 1/4 Gallon
Tandem Gear Pump Delivers 15 GPM of Oil to Mixer Motor And 7.4 GPM to Wheel Motors

NEW

SUPER CUT HAY TIGER MIXERS

CHROME PLATED KNIVES SPACED 4 IN. APART ALLOW YOU TO CUT AND MIX HAY FROM SMALL SQUARE OR LARGE SQUARE BALES.



- 1" Polyclad Plywood Sides Will Not Corrode
- 1" Thick Auger Flight
- 1/4" Stainless Steel Auger Trough
- 4" Thick Polyethylene Wear Tracks
- Stainless Steel Lined Floor
(Some Mixers are Being Used for 20 Years with the Original Stainless Steel Liner)
- Knives Spaced 4" Apart You Do Not Need to Process Dry Longstem Hay Before Adding It to Your Mixer
- Stainless Steel Pins in the Mixing Chain are 3/4" or 7/8". Depending on the Size of the Mixer.
- Sizes from 130 to 490 cu. ft.

"NEW" SUPER CUT HAY TIGER MIXERS

We're mixing in a whole new field



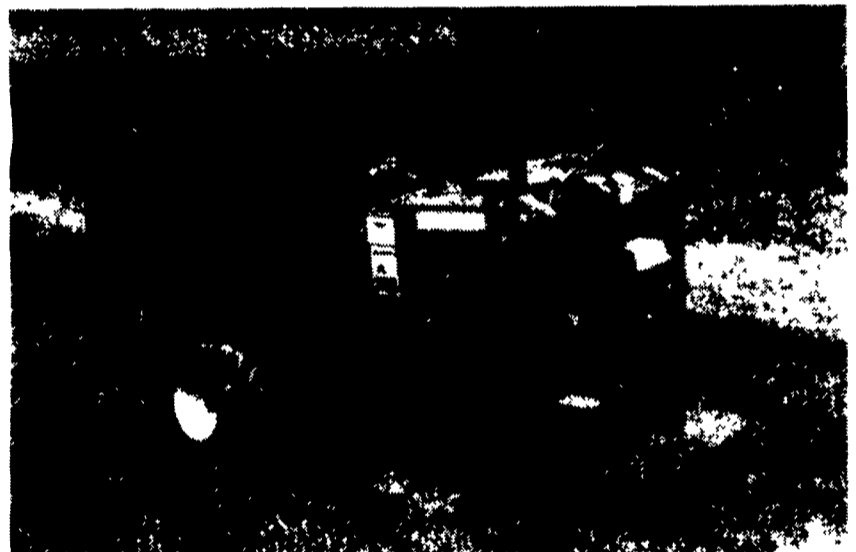
Chrome plated Knives installed in Stationary & Mobile TMR Mixers

Mobile Mixer / Feeder Cart



- Better Feed Utilization - You May Not Be Able To Empty Your Silos.
- Less Expensive Premixes - You Can Mix Your Own Feed. (This Could Make Your Feed Salesman Unhappy)
- Less Problems With Twisted Stomachs - You Might Not See Your Friend The Vet As Often.
- Less Time and Effort Spent Feeding.
- Increased Milk Production

Stop By To See The Round Bale Feeder With New Lower Design



- Full-hydraulic operation powered by quiet, efficient, air-cooled engine.
- Joystick-controlled; independent, hydraulic motor drive on each wheel eliminates maintenance associated with drive chain, sprockets and bearings.

See the new
V-Twin Fast Feed TMR Mixer
on display at
AG PROGRESS DAYS
by Zartman Farms

Tom Zartman - Co. Representative



Manufactured by:
I.H. Rissler
Manufacturing, LLC
1-800-436-5623

Zartman Farms

820 Hilltop Road, Ephrata, PA 17522
717-733-1050

Email: zartmanfarms@dejazzd.com
Website: www.zartmanfarms.com

