



Daily Schedule

(Continued from Page E3)

Snakes of Pennsylvania (We) - NRCP

Stream Corridor Management/Riparian Buffers Tour - NRCP

Equine Seminar: Pre-Purchase Exams (Tu); Bits and Biting (We); Positive Reinforcement Training (Th) - ELC

Fruit Tree Pruning Demo Tour - CC

11:15 — Working Sheep Dog Demonstration (Tu) - HA

11:30 — Field Machinery Demo: Tillage Tools to Conserve Residue - see program guide for location

Working Sheep Dog Demonstration (We) - HA

Preifert Texas Thunder Six Horse Hitch (Th) - HA

Equine Seminar: Ground Handling Safety Skills (We) - ELC

12:00 — Theater Presentation: The American Chestnut - CBT

Storyteller Jan Kinney - FLH

Farm Safety Demo (Tu, Th) - end W. 8th St.

Preifert Texas Thunder Six Horse Hitch (Tu) - HA

Trail Riding and Packing Demo (Th) - HA

Equine Seminar: Horse Shoeing and Hoof Care (Tu); Conformation and Judging (We); Career Panel Discussion (Th) - ELC

Flower Arranging Demo - LLG

Animal Science Workshop: Colostrum Absorption and Calf Health (Tu); Artificial Insemination Technique (We); Make Hard Calvings Easier (Th) - ASF

Forest Stewardship Tour - NRCP

General Research Tour - CC

12:30 — Trail Riding and Packing Demo (Tu, We) - HA

Ground Handling and Starting the Young Horse (Tu) - HA

Field Machinery Demo: Manure Application to Reduce Odor and Preserve Residue Cover - see program guide for location

Skid Steer Rodeo (We) - see program guide for location

12:45 — Horse Breed Clinic: Friesian (Th) - HA

1:00 — Animal Science Workshop: Monitoring Feed Particle Size (Tu); Correcting Common Causes of Lameness (We); What to Do

About Mastitis "Bugs" (Th) - ASF

Farm Safety and Health Quiz Bowl/FFA Division (We) - W. 10th St.

Theater Presentation: History of Deer in Pa. (Tu, We); Visualizing Your Forest (Th) - CBT

Dirt and Gravel Roads Workshop - NRCP

Grazing and Forage Management Tour - NRCP

Equine Seminar: Proper Nutrition and Feeding (Tu); Dress for Success in the Showring (We); Pasture Management (Th) - ELC

General Research Tour - CC

1:15 — 4-H and Pa. State Police Mounted Flag Presentation (We) - HA

PQHA/Penn State 4-H Equine Skillathon ("With Horse" Division) (Th) - HA

1:30 — Field Machinery Demo: Hay Rakes and Tedders - see program guide for location

Ground Handling and Starting the Young Horse (Tu) - HA

Roping and Cutting Demo, Mel Blount (We) - HA

Livestock Evaluation Center Tour - CC

Farm Safety Demo (Tu, Th) - end W. 8th St.

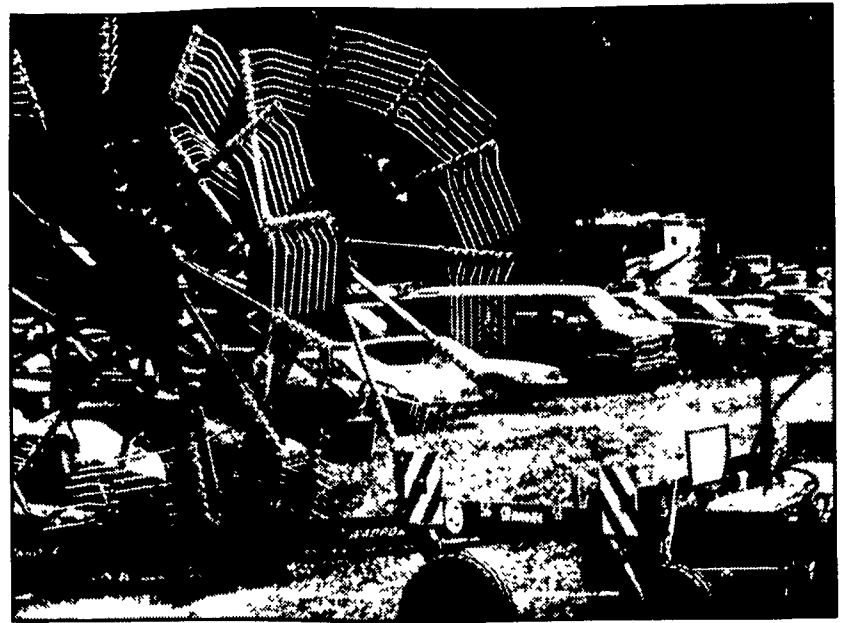
2:00 — Flower Arranging Demo - LLG

Field Machinery Demo: High-Moisture Hay Baling - see program guide for location

Farm Safety Demo (We) - end W. 8th St.

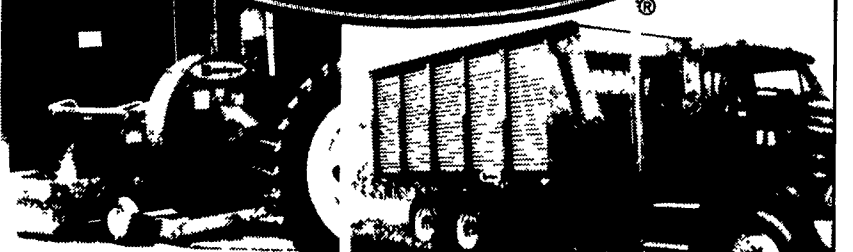
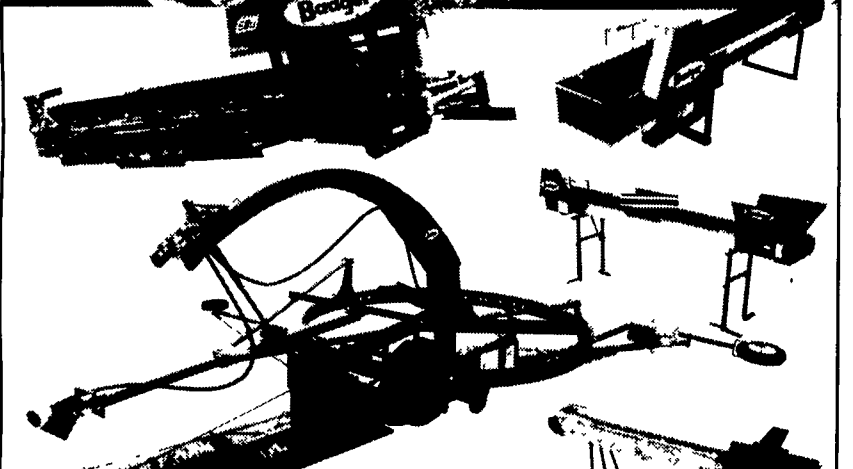
Theater Presentation: Visualizing Your Forest (Tu, We); Video: Upstream, Downstream: Preserving Our Way of Life (Th) - CBT

(Turn to Page E6)



Hay rake demonstrations were popular with visitors to last year's Ag Progress Days.

TAKE A NEW LOOK AT Legendairy Forage Handling



SEE YOUR AUTHORIZED BADGER DEALER

- | | | |
|---|--|--|
| Ansville
BHM Farm Equipment
717-867-2211 | Everett
C. Paul Ford & Son, Inc.
814-652-0095 | Troy
Fallbrook Fabrication
570-297-3802 |
| Carlisle
CFS
717-243-4419 | Lancaster
Show-Ease Stall Co.
717-299-2536 | Watsonstown
Rovendale Ag & Barn
Equip
570-538-9564 |
| Chambersburg
CFS
717-264-3533 | Oley
Pikeville Equipment
610-987-6277 | |

Get more info on all the Badger products at:
www.badgerfarmequipment.com

DOEBLER'S

old company
new technologies

For nearly 70 years, Doebler's has been providing the highest quality of seed products to its growers. Its commitment to quality and innovation is the foundation of its success. Your Request is our Advantage. Introducing...

new hybrid CORN varieties

a new ALFALFA

new FORAGE GRASSES

new ROUNDUP READY[®] SOYBEANS

