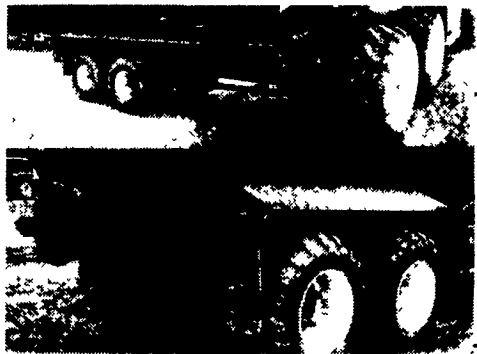


We make trucks work in the field with **ALLIANCE** flotation tires



High-Flotation



#328

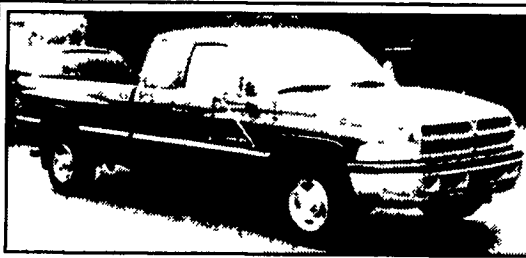
High-Traction Flotation



#331

CUSTOM HEAVY DUTY WHEELS & TIRES FOR SPOKE OR BUDD HUBS. WE CAN MAKE WHAT YOU WANT!

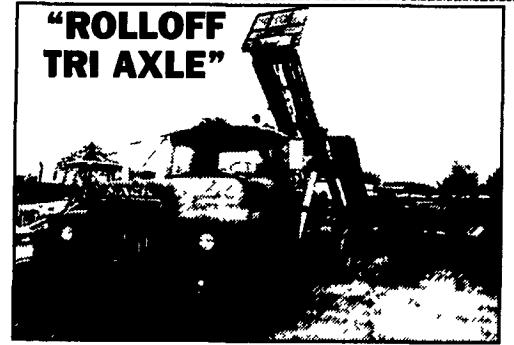
Diller Equipment 800-640-4448
Somerset & Chambersburg, PA 814-629-9893
Stop Spinning Your Wheels, Call Us Today!



1995 DODGE SLT 2500 EXTENDED CAB, 2WD, V10, 5 Speed, PS, PB, PW, PDL, Cruise, Tilt, Air, 8,800 GVW, 410 Ratio, Limited Slip Diff., 36,000 One-Owner Miles, Ex. Cond., Dark Green
\$10,500

A&J AUTO SALES

798 E. Main St., Rt. 322 East, Ephrata, PA., 17522
717-733-2873



"ROLLOFF TRI AXLE"

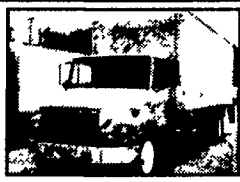
77 MACK Rolloff Tri axle, Model DM686SX 237 diesel, 5 spd., P/S, 50,000 lbs Heil Rolloff, 10 R22 Tires, Camelback suspension, Double frame, 58,000 Lbs. Rears. Runs Good. Need Some Tires

\$4,990 FIRM

Call Ray at 856-424-6300



1998 FL-70 Freightliner Turbo Diesel, 5 Speed, A/C, 26,000 GVW, 24 Ft Van, Lift Gate, 83,000 Mi



1997 Freightliner FL-70 Turbo Diesel, 5 Speed, A/C, 26,000 GVW, 24 Ft Van, Liftgate, 95,000 Mi



1995 FL-60 Freightliner Turbo Diesel 5 Speed, A/C 26 Ft Van, 26,000 GVW, Ex Cond., \$12,900



1998 FL-70 Freightliner Turbo Diesel 5 Speed, A/C, 26,000 GVW, 26 Van, Excellent Cond



1997 GMC W-4 Turbo Diesel Auto, 15,000 GVW, 12 Ft Stake Body Dump, Ex Cond., \$16,500

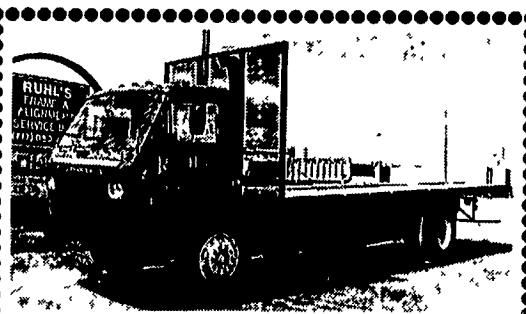


1999 GMC W4 V8 Auto A/C 15' Van Pull Out Ramp 73,000 Mi., 12,000 GVW Excellent Cond

MARTIN'S USED TRUCKS & EQUIPMENT INC.

560 Lampeter Rd., Lancaster, Pa., 17602
Robert Martin (717) 392-6266 • (717) 299-6200
Reefers • Vans • Flatbeds • Used Parts

WE SERVICE WHAT WE SELL



1988 Peterbilt, 6 Spd, 38,000 GVW w/24' Straight Body, Looks & Runs Good
\$7,595

1985 Mack RD686S

Mack 237 • Mack 5 Spd. 311,643 Miles - Camelback Susp. 14' Steel Body **\$16,900**

Call Jerry Hillard
717-278-9590

GM Goodwrench Engines

feel the confidence

GM Parts

THE FEELING IS GENUINE



- 12 Month Minimum Warranty
- Limited 36 Month Warranty
- Shipped As Shown

86 and prior carburated 4 bolt main....\$1,370
87-95 TBI, Truck, 2 bolt main.....\$1,799
87-96 TBI, 3/4 Truck, 4 bolt main.....\$1,899

Jones
Parts Warehouse
A Division of Jones Family of Dealerships

Prices are subject to change. Prices do not include shipping. Please call for the best possible shipping prices for you.

1-800-827-0129

PONTIAC • HONDA • GMC TRUCK • ACURA • USED CAR CENTER
1335 Manheim Pike • Lancaster, PA
717 394-0711

Jones
QUALITY PRE-OWNED BEST BUYS!

Prices based on straight sale. Tax and tags extra. Trades accepted at actual cash value. Must present this ad at time of purchase for sale price.

JONES QUALITY PRE-OWNED BEST BUYS!



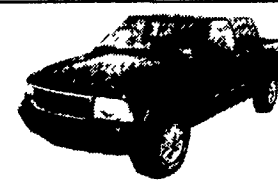
NEW 2003 GMC C4500 DUMP BODY
Duramax Diesel, Allison Automatic & Much More!
#41252, MSRP \$44,916
SALE \$40,400*



NEW 2003 GMC K2500 XCAB 4x4
AT, Air, V8, 4 Doors, 8 Bed
#43651, Was \$32,140
SALE \$26,627*



2002 GMC YUKON 4x4
Autotrade, SLT, V8, AT, Air, Dark Blue, 16K Miles
#7404 Was \$35,100
SALE \$32,100



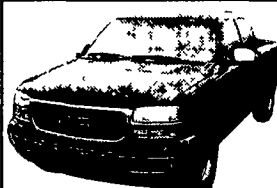
2002 GMC SONOMA CREWCAB 4x4
AT, Air, V6, SLE, #7355
Was \$19,900
SALE \$17,700



2001 JEEP CHEROKEE 4x4
Sport, AT, Air, 6 Cyl
#7399 Was \$16,900
SALE \$13,770



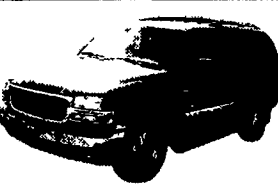
2001 GMC C1500 PICKUP
AT, Air, V8, Dark Blue, 14K Miles #7432 Was \$19,200
SALE \$18,000



2001 GMC K15 XCAB 4x4
AT, Air, V8, SLE, 18K, Dark Blue
#7441 Was \$25,900
SALE \$24,000



2001 GMC DENALI XL
AT, Air, V8, Sunroof, Loaded
#7353, Was \$39,000
SALE \$35,000



2000 YUKON 4x4
SLT, AT, Air, V8
#7425 Was \$24,400
SALE \$21,900



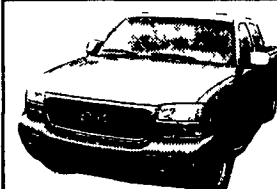
2000 NISSAN QUEST
GXE, AT, Air, V6
#7401 Was \$15,500
SALE \$13,700



2000 GMC YUKON XL 4x4
SLT, AT, Air, V8
#7366 Was \$28,900
SALE \$25,500



1999 FORD RANGER XCAB 4x4
AT, Air, V6, XLT, Black
#7429 Was \$12,900
SALE \$11,400



1999 GMC K15 XCAB 4x4
SLE, AT, Air, V8,
#7443 Was \$21,000
SALE \$19,400



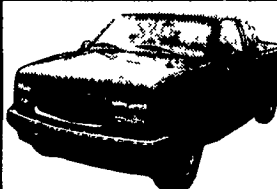
1999 DODGE RAM XCAB 4x4
SLT, AT, Air, V8
#7417 Was \$18,800
SALE \$16,500



1999 LEXUS RX300 4x4
AT, Air, V6, Black
#7416 Was \$22,400
SALE \$19,900



1999 GMC DENALI 4x4
AT, Air, V8, Loaded
#7351, Was \$21,900
SALE \$19,700



1998 GMC K15 XCAB 4x4
AT, Air, V8, SLE, 3 Door
#7426 Was \$17,900
SALE \$16,500



1998 GMC K2500 4x4 CAB & CHASSIS
AT, AC, SLE, V8,
#7411 Was \$9,900
SALE \$8,000



1997 CHEV. K1500 XCAB 4x4
Silverado, AT, Air, 350
#7370, Was \$12,800
SALE \$10,800



1996 GMC YUKON 4x4
SLT, AT, Air, 350
#7422 Was \$11,900
SALE \$9,550

*All New Vehicles Include GM Rebates **Price Includes GM Rebate of \$3,000, \$1,000 Loyalty Rebate For Owning a GMC or Pontiac \$1,000 Allison Transmission Rebate