



**1997 Chevy K2500 Silverado Extended Cab 4x4 Shortbed**  
350 Vortec, AT, A/C, PW, PDL, Cruise, Tilt, Cas., 8600 GVW, 3 73 Rear, Clean, 68,000 Mi., Sandstone  
**\$15,500**



**2000 Ford F350 XLT 4x4**  
7.3 Powerstroke Diesel, 6 Sp., A/C, PW, PDL, Cruise, Tilt, Cas./CD, P-Mirrors, Gooseneck Hookup, 9,900 GVW, 3 73 Ltd. Slip Rear, 77,000 Miles Maroon  
**\$20,500**

**MARTIN'S AUTO SALES**

1025 W. Main St., New Holland, PA 17557  
**(717) 656-6621**

**DIESEL PERFORMANCE**



**Chevy Duramax:** Adjustable Module 30 to 90 HP increase!  
AFE performance air filter assy  
**Dodge 24 Valve:** Adjustable Module 40 to 120 HP increase!  
Exhaust & intake upgrades  
**Powerstroke:** Performance chips 40, 60, 80 hp.  
Programmed while you wait!!

**SPECIALS:**

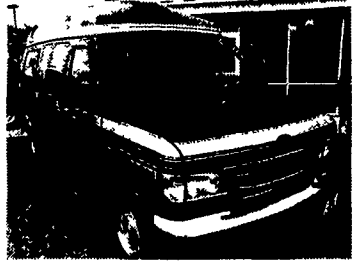
DURAMAX long block exchange.....	\$5,700
POWERSTROKE Test Engine exch.....	\$5,500
6.5L Long block kit w/pump, inj. gp, & tubo exch.....	\$4,750
ALLIANT OEM Factory NEW Powerstroke injectors exchange.....	\$207
DIGITAL Pyrometer kit.....	\$399
POWER TONNO Cover by Webasto.....	\$749
6.5L Exchange Turbocharger GM4, 5, & 8.....	\$438
STANADYNE PERFORMANCE Fuel Conditioner by the case.....	\$48

From The Diesel Specialists For Over 45 years  
**Penn Diesel Service Co.**  
Interstate 81 Exit 77, Harrisburg, PA  
**(800) 535-2913**

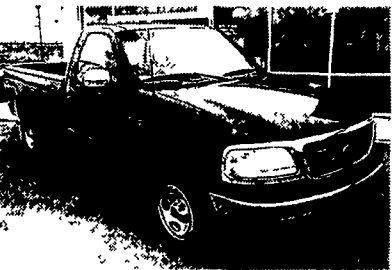
**W** **WHITMOYER** 717-233-2000  
LIZARDTOWN, PA  
**Over 80 Quality Pre-owned Vehicles In Stock**



**2000 Ford E150 Club Wagon**  
8 Cyl., Loaded, 29K Miles  
#P7900 **\$18,995**

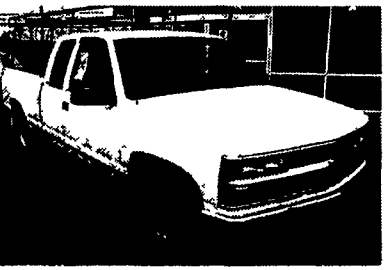


**1999 Ford E150 Conversion**  
8 Cyl., Loaded, TV, VCR, 11K Miles  
#P1321 **\$21,828**



**2001 Ford F-150 XL**  
6 Cyl., 5 Speed, Loaded, Long Bed  
#P3694 **\$11,409**

**2003 Ford Clearance**  
0% available for 60 months on most models



**1998 Chevy 1500 Cheyene**  
8 Cyl, Auto, A/C  
#P1010A **\$7,998**



**1999 Ford F150 XLT**  
8 Cyl., Auto, Loaded, 1 Owner  
#P1915 **\$15,965**

**PINE TREE MOTORS**

2407 W. Main St., Ephrata 17522  
**717-738-2242**

Over 75 Vehicles To Choose From [www.pinetreemotors.com](http://www.pinetreemotors.com)



**95 CHEV. G30 BEAUVILLE, 5 7L FI V8, AT/OD, Dual A/C & Heat, PW, PDL, Keyless, Tilt, Cruise, AM/FM Cass., 12 Pass, PS, PB, Side Barn Doors, Red, 120,000 Miles**  
**\$6,800**



**98 DODGE RAM 1500 SPORT QUAD CAB, 5 9L, FI Magnum V8, AT/OD, 2WD A/C, PW, PDL, Tilt, Cruise, Pwr Seat, Pwr Mirrors AM/FM Cass, Dual Airbags Short Bed, Bed Liner Towing Package, Alloy Wheels Green 80 000 Miles**  
**\$9,800**



**99 GMC K1500 SIERRA SLT EXT. CAB, 5 3L FI Vortec V8, AT/OD, 4x4, A/C 3rd Door, Leather, Pwr Seats, PW, PDL, Keyless, AM/FM CD, Tilt, Cruise, Dual Airbags, Privacy Glass, Towing Package, Delay Wipers, Alloy Wheels, White, 104,000 Miles**  
**\$14,900**



**00 DODGE DAKOTA SPORT QUAD CAB, 4 7L FI Magnum V8, 5 Spd, A/C, 4x4, Dual Airbags, Pwr Mirrors Delay Wipers, Rear Defroster, AM/FM Cass., Alloy Wheels, Flares, Towing Package, Black, 87,000 Miles**  
**\$14,900**



**02 CHEV. S10 LS EXT. CAB, 2 2L FI 4 Cyl, AT/OD, 2WD, 3rd Door, A/C, Tilt, Cruise, AM/FM CD, Dual Airbags, Alloy Wheels, Bed Liner, Remainder of Factory Warranty, Maroon, 5,000 Miles**  
**\$11,900**



**03 DODGE DAKOTA SPORT QUAD CAB, 3 9L FI Magnum V6 AT/OD, 4x4, A/C, PW, PDL, Tilt, Cruise, Pwr Mirrors, AM/FM CD, Dual Airbags, Alloy Wheels, Delay Wipers, PS, PB (ABS), Factory Warranty, Red, 9,000 Miles**  
**\$21,900**



**00 DODGE DAKOTA SPORT EXT. CAB, 3 9L FI Magnum V6, AT/OD, 4x4, A/C, PS, PB, Tilt, Cruise, AM/FM Cass, Dual Airbags, Alloy Wheels, Bed Liner, Flares, Blue, 81,000 Miles**  
**\$12,900**



**00 JEEP CHEROKEE LIMITED, 4 0L HO 6 Cyl AT/OD, 4x4, A/C, Leather w/Pwr Seat, PW, PDL, Keyless, Pwr Mirrors, Dual Airbags, PS, PB, AM/FM Cass/CD, Alloy Wheels, Delay Wipers, Privacy Glass, Roof Rack Rear Defrost, Tilt Cruise, Black, 35,000 Miles**  
**\$12,900**



**98 DODGE DURANGO SLT, 5 2L FI Magnum V8, AT/OD, A/C, 4x4, PW, PDL, Tilt, Cruise, Dual Airbags, PS, PB(ABS), AM/FM/Cass/CD, 3rd Seat, Privacy Glass, Running Boards Roof Rack, Wheel & Flare Package, Green, 63,000 Miles**  
**\$12,900**



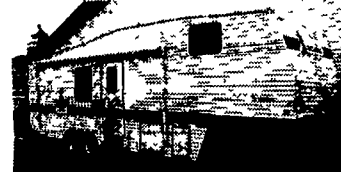
**98 PONTIAC MONTANA EXTENDED, 3 4L FI V6 AT/OD, Dual A/C, PW, PDL, Keyless, AM/FM Cass Dual Airbags w/Side Airbags Twin Sliding Doors Delay Wipers, Rear Defrost Tilt Cruise, Privacy Glass, Alloy Wheels Roof Rack, 8 Pass, Blue/Pewter, 73,000 Miles**  
**\$10,900**



**98 CHEVROLET ASTRO LS AWD, 4 3L FI Vortec V6, AT/OD, AWD, PW, PDL, Tilt, Cruise, Pwr Mirrors, Dual Airbags, AM/FM Cass, 8 Pass, Privacy Glass, Alloy Wheels, Roof Rack, Delay Wipers, White, 65,000 Miles**  
**\$10,900**



**00 CHEVROLET ASTRO LS AWD, 4 3L FI Vortec V6 AT/OD, Dual A/C, PW, PDL, Keyless, Pwr Seat, Pwr Mirrors, AM/FM Cass/CD, Dual Airbags, 8 Pass, Dutch Doors, Towing Package, PS, PB (ABS), Roof Rack, Alloy Wheels, Privacy Glass, Green/Pewter, 92,000 Miles**  
**\$9,800**



**98 MALLARD 29' FIFTH WHEEL TRAVEL TRAILER, Twin Slide Out, Sleeps 4, Central A/C, Heat, Stove Oven, Microwave, Refrig/Freezer, Stereo, Shower/Tub Large Bathroom, Plenty of Storage, Spare Tire, Rubber Roof, Awning, Leveling jacks**  
**\$11,900**



**94 PROWLER 27' TRAVEL TRAILER, Sleeps 8, Ft Master Bedroom, Rear Bunks, Central A/C, Heat, Rear Bath, Dinette, Sofa, Awning, Stove/Oven, Microwave, Refrig/Freezer, Stereo, Rubber Roof**  
**\$7,800**



**94 WINNEBAGO 33' CLASS A MOTOR HOME, 7 4L FI V8, AT/OD, Generator, Interior Fire, Salvage Cert, 36,000 Miles, Runs & Drives, Would Make an Excellent Conversion to an ATV, Snowmobile, Race Car Hauler, Etc**  
**\$4,800**

**FINANCING AVAILABLE**

CARS	
00 PONTIAC GRAND PRIX GT, AT, AC, 4DR	\$10,495
00 CHEV CAVALIER Z24, AT, AC, 2DR	\$9,900
99 VW JETTA GL, AC, 5 SPD	\$10,495
99 VW JETTA GLS, 5 SPD, AT	\$9,800
99 BUICK CENTURY CUSTOM, AT, AC, 4DR	\$7,495
98 HONDA CIVIC, 5 SPD, AC, 4DR	\$7,995
98 DODGE STRATUS, 4DR, AC	\$6,500
98 DODGE NEON, AT, AC, 4DR	\$4,995
97 VW JETTA GL, 5 SPD, A/C	\$6,500
97 DODGE INTREPID, AT, AC, 4DR	\$4,995
97 MAZDA PROTEGE LX, 4 DR	\$4,800
95 HONDA ACCORD LX, AT, AC, 4DR	\$7,995
94 CHEV CORSICA	\$1,995
90 HONDA ACCORD LX, AC, AT, 4DR	\$4,800
90 CHEV LUMINA	\$1,250
90 MERCURY SABLE SW	\$895
89 TOYOTA CAMRY, AT, AC	\$2,800
70 CHEV NOVA, 2DR	\$3,900 OBO
SPORT UTILITIES	
00 CHEV TAHOE LS, 4x4	\$18,900
00 JEEP CHEROKEE LIMITED, 4x4	\$12,500
00 DODGE DURANGO SLT, 4x4, 3RD SEAT	\$11,900
00 JEEP GRD CHEROKEE LAREDO, 4x4, AT	\$11,995
00 CHEV S10 BLAZER LS, 4x4	\$10,495
99 JEEP GRD CHEROKEE LAREDO, 4x4, AT, AC	\$14,995
99 JEEP GRD CHEROKEE LAREDO, 4x4, AT, AC	\$13,500
99 DODGE DURANGO SLT, 4x4, 3RD SEAT	\$12,900
99 MITS MONTERO SPORT XLS, 4x4, AT, AC	\$11,900
97 CHEV S10 BLAZER LS, 4x4	\$5,995
97 GMC SUBURBAN SLT, 4x4, AC, AT	\$13,900
97 GMC YUKON SLT, 4x4, AT, AC, LEATHER	\$13,500
96 CHEV TAHOE LS, 4x4, AC, AT	\$11,500
96 GMC JIMMY SLE, 4DR, 4x4, AC, AT	\$7,995
95 GMC SUBURBAN SLE, 4x4, AT, AC	\$11,900
VANS	
01 FORD E350 SUPER CARGO VAN, POWER STROKE DIESEL	\$21,900
00 CHRYSLER TOWN & COUNTRY LXI, MOSS GREEN	\$13,900
00 CHRYSLER TOWN & COUNTRY LXI, BLUE	\$13,900
00 DODGE GRD CARAVAN SPORT, TWIN DOORS	\$10,500
00 CHEV ASTRO LS AWD, AT, AC	\$9,800
00 DODGE GRD CARAVAN SE, TWIN DOORS	\$8,500
99 FORD E350 CARGO VAN, AT, AC	\$11,500
99 PONTIAC MONTANA EXTENDED	\$10,900
99 CHEV G1500 CARGO VAN, AT, AC	\$10,800
99 FORD WINDSTAR LX, TWIN DOORS	\$9,900
99 FORD CLUB WAGON EXT, AT, AC	\$10,900
99 CHRYSLER TOWN & COUNTRY LX	\$8,900
TRUCKS	
03 DODGE DAKOTA SPORT QUAD CAB, 4x4	\$21,900
02 CHEV S10 LS EXT CAB, LOW MILES	\$11,900
01 FORD EXPLORER SPORT TRAC, 4 DR, 4x4	\$14,900
00 CHEV K2500 LS QUAD CAB, 4x4, LOADED	\$22,900
00 CHEV K2500 LS EXT CAB...w/PLOW...\$17,900	w/o PLOW \$16,900
RV	
00 DODGE DAKOTA SPORT QUAD CAB, 4x4	\$14,900
00 DODGE DAKOTA SPORT EXT CAB, 4x4	\$12,900
00 DODGE DAKOTA SLT QUAD CAB, AT, AC, 2WD	\$12,800
00 DODGE DAKOTA SPORT, 2WD	\$8,900
99 CHEV K2500 SILVERADO LS EXT CAB, 4x4	\$18,495
99 GMC K1500 SIERRA SLT EXT CAB, 4x4	\$14,900
99 FORD F250 SUPER DUTY XLT, AT, AC	\$12,900
99 CHEV K2500 CLASSIC, AT, 4x4	\$12,500
99 FORD RANGER XLT, 4x4, QUAD CAB	\$9,995
99 CHEV S10 LS EXT CAB, 4x4, AT	\$10,495
99 CHEV C1500 SILVERADO, AT, AC	\$8,995
99 CHEV S10 LS, 5 SPD, AC, 2WD	\$7,500
99 DODGE RAM 2500, AT, AC, 2WD	\$7,800
98 DODGE RAM 1500 SPORT, QUAD CAB, 4x4	\$11,900
98 DODGE RAM 1500 SPORT, 2WD, AT, AC	\$9,800
98 DODGE DAKOTA SPORT EXT CAB, 2WD	\$8,900
98 DODGE RAM 1500 SLT, 4x4, AT, AC	\$11,900
98 ISUZU NPR, 15' BOX, AT	\$11,900
97 FORD F350 XLT EXT CAB DUALY, 2WD	\$12,900
97 DODGE DAKOTA SPORT EXT CAB, 4x4, AT, AC	\$8,995
97 DODGE DAKOTA SPORT, 2WD, 5 SPD	\$4,995
96 CHEV C2500 SILVERADO EXT CAB, UTILITY BODY	\$10,900
96 DODGE RAM 1500 SLT, AT, AC, 2WD	\$7,995
96 GMC K1500 SLE EXT CAB, 4x4, AT, AC	\$11,900
95 DODGE RAM 2500 SLT, CUMMINS DIESEL	\$12,900
95 FORD F350 BOX TRK, POWER STROKE DIESEL, AT	\$10,900
91 CHEV C3500 HD CAB & CHASSIS, AT	\$7,995
RV	
98 MALLARD 29' FIFTH WHEEL TRAVEL TRAILER	\$11,900
94 PROWLER 27' TRAVEL TRAILER	\$7,800