

1950's Massey Harris tractor w/hyd. wood splitting machine & 30" PTO belt driven table saw. Excellent condition
\$3,850/OBO
717/464-7474



J & L Hay-Saver Feeds 20 Cattle

New, improved, round hay-bale feeder feeds large or small hay bales along with square bales. University proven hay savings. This feeder is built of heavy 1 1/2" pipe and heavy steel for ring.

Available with 3/4" plywood floors. This feeder is built to last.

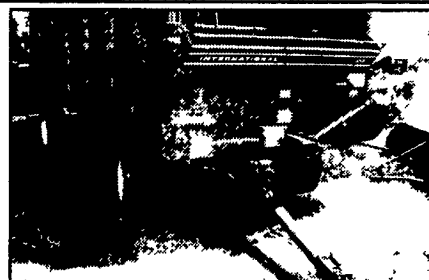
J & L Equipment

156 Pompey Hill Road, Stoystown, PA 15563

814-893-5086

AG Progres Specials

JL HD Hay Savers \$795
 Del. 20 Mile Radius



Recent Trade IH 120
 Forage wagon w/8 lug, 12 Ton gear

DJ Implements Lebanon Co., PA
 717-949-3769 7:30 A.M. - 4:30 P.M.

KELLER'S FARM MACHINERY

116 Richlandtown Pike
 Quakertown, PA 18951

215-536-4046

- NH TN65F, narrow tractor, 4x4, cab
- Ford 8670, 4x4 w/duals, cab
- Ford 6610 II, w/Ford loader
- Ford 335 loader, 3 pt PTO
- Ford 420 loader, gas, new paint
- Ford 7610, 4x4, cab & loader
- Ford TW15, Series II, 4x4, w/cab
- Ford 7610, Series II, 4x4, new paint
- Ford 2000, offset w/1R cultivator
- Ford 3600, 8 spd, PS
- Ford 1720, 4x4, loader, 12x12 trans
- Ford 3400 loader, 3 pt PTO
- Ford 1210, 4x4, 60" Ford mower
- Ford NAA, Rebuilt, real nice
- Ford 800, LPTO, new paint
- Ford 2000 loader, new paint & tires
- Ferguson 30 w/Wagner loader
- AC C w/woods mower
- AC D17 NFE, 3 pt

Global Hydronics OUTDOOR WOOD/COAL STOVES

Dealer Inquiries Welcome!
 Come see **A-HIT, INC.** at
 "Ag Progress Days" (Aug 19-21),
 "Williams Grove Historical Steam Engine"
 (Aug 24-Sept 1) 1•800•521•3969
www.a-hit.com

HYDROSTATIC TRANSMISSION REBUILDING

on Farm and Construction Equipment

Cessna, Sunstrand, Vickers, Eaton,
 Danfoss, Char-Lynn, TRW

We Do Grinding, Lapping and Hydraulic
 Hose Assemblies

GD Equipment

414 Rowe Rd., Shippensburg, PA
717-530-0170



Keenan 115 FP Mixer
 with hay processor knives. Used 1 1/2 years,
 shed kept, can be used stationery, excellent cond.
\$16,000 obo
540-879-2051

For Sale By Owner

- CIH 5400 15' No Till Grain Drill w/Yetter Markers 1449 Acres, Excellent Condition
- Kinze Double Frame 6 Row 30 No Till Planter with 5 Interplant Pusher Units Used Very Little w/Monitor Corn Soybean and Milo Meters Like New
- Kinze Double Frame 4 Row 38 No Till Planter with 3 Interplant Units with Monitor Corn Soybean and Milo Meters, Liquid and Dry Fertilizer with Insecticide Liquid Squeeze pump Good Condition
- John Deere 4435 Combine 915 Flex Grain Header 5 Row 30 Corn Head with Poly Snouts and Oil Drive 2078 Hours
- Brillion 5 Shank V-Ripper Used Less Than 100 Acres
- Massey Ferguson 18 5 Hydraulic Fold Transport Disc w/Leveling Boards
- Ferguson 10 Chisel Plow w/Gauge Wheels
- Ferguson Heavy Duty Trencher Like New
- Taylor-way 3pth 72 Grooming Mower 1 Year Old
- LMC 3pth 7 Heavy Duty Box Scrape w/Scarfer **SOLD**
- 3pth 250 gal Nitrogen Applicator Equipped with Squeeze Pump and Yetter Fertilizer Coulters, 6 Row Ground Driven
- 1984 International 1600S, Less than 11 000 Miles on Factory Reman 6.9 Diesel Engine Spicer 5 Spd Trans 17 Meadows Dump with Aluminum Grain Side Kit Excellent Truck
- 1986 Ford F-700 Gas, 5+2 14 Meadows Dump with Aluminum Grain Side Kit 66 272 Miles
- 1986 Ford CF7000, 6.6 Diesel 3+2 Trans 20 Meadows Flat Bed with Aluminum Grain Side Kit Less than 7500 Miles on Rebuilt Engine Excellent Truck
- Crippen Mfg. Co Seed Cleaner Model Midget II Cleaned Less Than 350 Bushel Like New

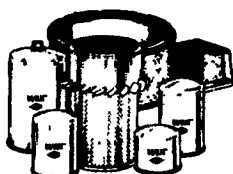
Phone 410-641-1344 8 a.m. to 5 p.m. Mon.-Fri.
 Ask for Ronald, Sr.

Equipment located on farm near Berlin, Md.

Heavy Duty Farm Filters At A Great Price!



70% OFF
 list price for
 all heavy duty
 farm filters and get
FREE SHIPPING
 for qualifying
 customers.



WIX and Filter 1,
 backed by more than
 60 years of leadership in
 the filter industry!



11344 South St. Rt. 34, Cato, NY 13033

Currently in Stock:
 Over 1,900 Filter Numbers!
 Over 8,000 Filters!
 Over \$120,000 Inventory!

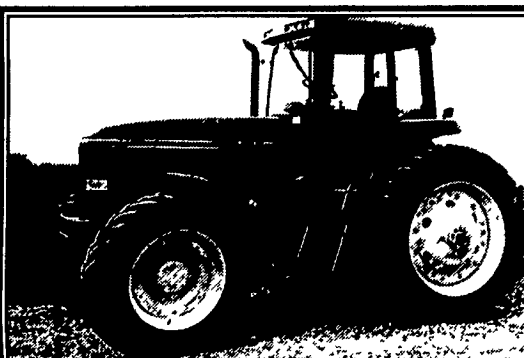
Three Easy Ways to Order:
 Phone: 315-626-2114
 or 800-919-8893
 Fax 315-626-2115
 Internet: www.filter1.com



1486 T.A.
 20.8-38 Tires, Nice **\$9,200**
570/922-3340



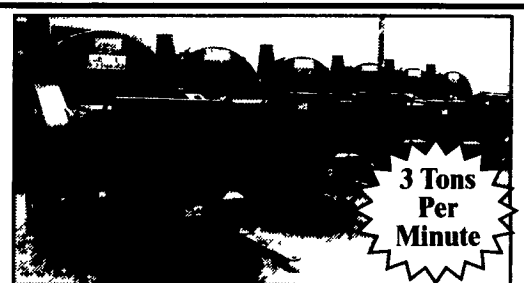
White 2-150
 20-38 Rubber, Dual PTO & Hyd.
\$6,500
No Sunday Calls (717) 532-8926



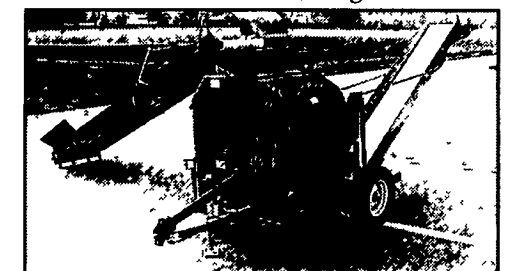
JD 7700, 3200 Hrs., 3 Remotes,
 Excellent Condition, **\$39,800**
Fox Farms
717-867-5633 or 717-821-5534



IH 3288 w/turbo 125 hp, 4 post canopy, 3000 one
 owner hrs. 18.4 38 in rubber 85%, Recently
 Serviced. Shed Kept, excellent condition **\$11,400**
 Farm 570/658-2514 Cell 570/850-6494



60 Inch Blowers w/Silage Mills



42" Hammermill Belt Conveyor Input
 and Output 3/32", 3/16", 1/4",
 3/8" Screens, 1,000 Rpm
 Machine designed to take feed from 6 row combine

Lancaster Silo
1-888-233-1852

Call us for your chopper needs - pull-type or S P

FARM EQUIPMENT

1987 JD 6620 Titan II Sidehill, lots of recent repairs, Great Looker, Also, 1981, 1983 Sidehills, 800/919-3322 Zeisloff Eq.

1953, JD 40 S, 2 cyl, great mechanical shape. 717-404-1968.

NH 4 ton flat bed, \$675. 717-653-5194

Oliver Superior drill, 16 hole on steel spoke whis; 10' Gandy lime fertilizer seed spreader; JD 45 ldr; JD #5 bar mower; Best Offers. 717-898-0675

MF 1163 6R corn head, ear savers, good cond. \$2,495, 717/532-3110

JD 4 cyl Turbo Dsl, exc running cond, \$2,800. 814/942-3821

JD 158 loader w/joy stick & 4230 Brackets, \$3000. 20KW PTO generator w/welder, \$1250. 40' 6" PTO grain auger, \$300. 717-534-1253.

Hedlund Martin S1678 Scavenger II manure spreader, floatation tires & floating auger, VG cond, \$1,950. 717-354-3208

JD 6420 tractor, cab, 4x4, power quad, 390 hrs, \$43,500. 301-733-2195.

Sunflower mdl 5034 22' field cultivator, \$11,200/OBO, 717-653-0894

JD 6420 tractor 4x4, pwr quad, open station, JD 640 loader 301-733-2195

Manure spreaders, NI ground drive 28.4-wheel, 45-100 bu. 570-658-9098

LANDPRIDE 15-50 Rotafiller, new cond. \$1,100 FIRM, 717/764-1819.

(2) 9x18 Diller hay rack wagons, used very little, shedded, \$1800/ea. 717-529-6973

HERCULES, CONTINENTAL Waukesha farm, industrial engine parts. M&M Surplus Sales, P O Box 381, Chester, NY 10918, 845-469-3597; fax 469-0990.

IH 1440 & 1460 combines, well maintained, very nice, shedded, \$10,500 & \$11,500. 717-734-3139

JD 4320 fender tractor, exc working cond, \$8,400/obo 717/397-1051

JD 9400 combine, 2800 hrs/eng, 1900 hrs/separator, fully equipped, Ex cond, 717-765-0347 or Cell-717-977-8910

IH 720 plow, 6 bottom, high clearances, new paint, good shape. 410-275-2872

Vicon new ps403 spreader, \$2,075. New herd 1200 spreader, \$975. New 3PT backhoe, \$395. Skid loader hoes, \$975. 570-524-2410.

(3) Batwing Mowers, Woods, JD, Bushog, Zeisloff Eq. Rt 44, Bloomsburg, PA 800/919-3322.

COMBINE JD 6600 dsl, cab, air, 4400hrs, 4R Corn-head, \$4,000, 814/793-3923

One the Largest Selections of Grainheads & Cornheads in East. JD, Gleaner, IH & MF; Zeisloff Eq. 800/919-3322 Bloomsburg, PA

AC 190XT w/cab, Good cond, \$7,000 717-375-4471

7120 Case IH, 2WD, 8200 hrs, recent eng work, \$24,800, 717/665-1500

White 598, 5b plow, various widths, ASR, nice, \$3200. 717-734-3139

Parting Out, 510 MF Combine, dsl eng, hydro trans, 717/530-3670

JD 5B-B Grain Drill \$500, 5 Shank Sub-Soller, Drow Mechanical planter \$200, 4 row rotary hoe \$100 Middlesex WS 732-297-5748

