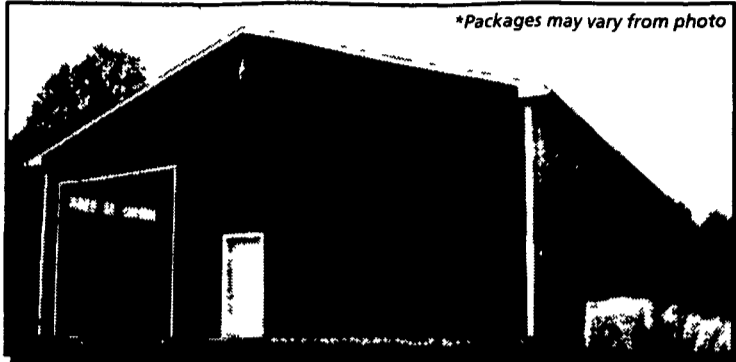


# CARTER LUMBER

## Pole Barns & Garages



\*Packages may vary from photo

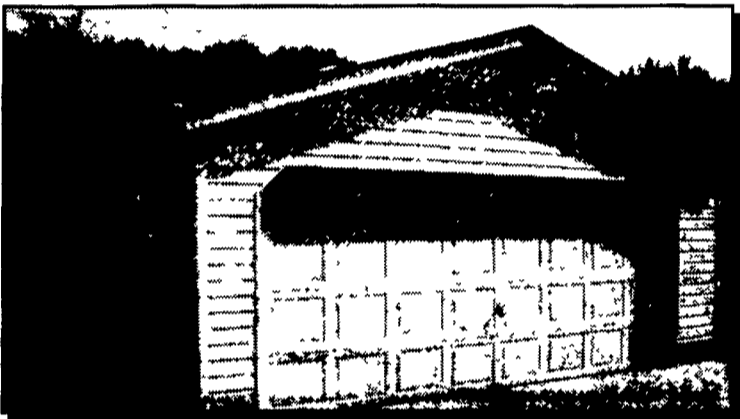
Painted Steel Siding w/ sliding door	8' HIGH 24' x 24'	10' HIGH 30' x 40'	12' HIGH 40' x 64'
25 yr. Painted steel roof	<b>\$2,696</b>	<b>\$4,708</b>	<b>\$10,040</b>

\* Also available in T1-11 and vinyl - customize your pole building

**FREE COMPUTER DESIGN**  
Any size, any style, any design - check your local Carter Lumber store or [carterlumber.com](http://carterlumber.com) for an estimate

### STANDARD OPTIONS AVAILABILITY

- 24', 30', 40' widths x any length
- Treated posts & skirt boards
- 2" x 4" wall girts
- T1-11, metal or vinyl siding (24' & 30' wide only)
- Truss w/1' eave overhang & soffit
- 25 yr. O.C. Fiberglas® shingles on 7/16" OSB sheathing or Fabral® metal roofing
- Sliding or overhead door w/hardware
- Optional 3' steel passage door
- Nails, trim & plans
- 40' barns available 14' high



	1 CAR 18' x 22'	2 CAR 22' x 24'	26' x 24'
Standard			
VINYL SIDING	<b>\$2,687</b>	<b>\$3,242</b>	<b>\$3,598</b>

\* Available in basic & premium packages & many other sizes

**FREE COMPUTER DESIGN**  
Any size, any style, any design - check your local Carter Lumber store or [carterlumber.com](http://carterlumber.com) for an estimate

### STANDARD FEATURES

- 16" O.C. wall framing w/ treated bottom plate
- Siding
- Roof truss w/1' eave overhang & soffit
- 1/2" OSB roof sheathing
- #15 felt
- 25 yr. O.C. Fiberglas® shingles
- Ridgevent
- Eave & gable drip edge
- CSE-100 3/0 man door
- 9100 series garage door (insulated)
- Also includes nails, hardware, plans & instructions

## Field Drain Tile



Baughman Tile Co.

♦Solid or perforated	<b>\$18<sup>19</sup></b>
4" x 100'..... (9504-solid / 9542-perf)	<b>\$45<sup>49</sup></b>
4" x 250'..... (9500-solid / 9502-perf)	

## Metal Roofing



### PAINTED GRANDRIB 3

♦Custom lengths available ♦White in stock ♦19 colors to choose from ♦36" actual coverage ♦Stock sizes

per 10' sheet	<b>\$15<sup>30</sup></b>
per 12' sheet	<b>\$18<sup>36</sup></b>
per 14' sheet	<b>\$21<sup>42</sup></b>
per 16' sheet	<b>\$24<sup>48</sup></b>

## Trusses



### 24' SUPER TRUSS

♦4/12 pitch with 1' overhang ♦Good for 4' on center at 30 lb. live load. Check local listing codes

(15575)

**\$32<sup>99</sup>**

## Dimension Lumber

♦We stock quality lumber in large quantities ♦Contact your local Carter Lumber for available species ♦Hem Fir or Doug Fir available in 22', 24' and 26'

	10'	12'	14'	16'	18'	20'
SPF 2" x 4"	<b>\$2<sup>74</sup></b>	<b>\$3<sup>20</sup></b>	<b>\$3<sup>78</sup></b>	<b>\$4<sup>43</sup></b>	<b>\$5<sup>10</sup></b>	<b>\$5<sup>67</sup></b>
SPF 2" x 6"	<b>\$4<sup>30</sup></b>	<b>\$4<sup>74</sup></b>	<b>\$5<sup>39</sup></b>	<b>\$6<sup>80</sup></b>	<b>\$8<sup>01</sup></b>	<b>\$8<sup>90</sup></b>
SPF 2" x 8"	<b>\$5<sup>27</sup></b>	<b>\$7<sup>36</sup></b>	<b>\$7<sup>75</sup></b>	<b>\$9<sup>28</sup></b>	<b>\$10<sup>80</sup></b>	<b>\$12<sup>27</sup></b>
SPF 2" x 10"	<b>\$6<sup>75</sup></b>	<b>\$9<sup>60</sup></b>	<b>\$12<sup>13</sup></b>	<b>\$13<sup>04</sup></b>	<b>\$13<sup>65</sup></b>	<b>\$14<sup>10</sup></b>
SPF 2" x 12"	<b>\$8<sup>80</sup></b>	<b>\$10<sup>32</sup></b>	<b>\$11<sup>48</sup></b>	<b>\$15<sup>04</sup></b>	<b>\$18<sup>54</sup></b>	<b>\$20<sup>60</sup></b>

## Treated Lumber

♦All of our treated lumber is quality grade stamped and carries a limited lifetime warranty against rot & decay ♦Southern Yellow Pine

	8'	10'	12'	14'	16'
#2 2" x 4"	<b>\$2<sup>39</sup></b>	<b>\$3<sup>39</sup></b>	<b>\$3<sup>89</sup></b>	<b>\$4<sup>79</sup></b>	<b>\$5<sup>59</sup></b>
#2 2" x 6"	<b>\$3<sup>59</sup></b>	<b>\$5<sup>09</sup></b>	<b>\$6<sup>29</sup></b>	<b>\$6<sup>89</sup></b>	<b>\$8<sup>89</sup></b>
#2 2" x 8"	<b>\$5<sup>29</sup></b>	<b>\$6<sup>99</sup></b>	<b>\$8<sup>99</sup></b>	<b>\$9<sup>79</sup></b>	<b>\$12<sup>19</sup></b>
Standard 5/4" x 6"	<b>\$4<sup>19</sup></b>	<b>\$5<sup>19</sup></b>	<b>\$6<sup>19</sup></b>	<b>\$7<sup>19</sup></b>	<b>\$9<sup>39</sup></b>
4" x 4"	<b>\$4<sup>99</sup></b>	<b>\$7<sup>99</sup></b>	<b>\$9<sup>19</sup></b>	<b>\$9<sup>49</sup></b>	<b>\$11<sup>89</sup></b>

**HOURS: Mon. thru Fri. 7:30-6:00 • Sat. 7:30-4:00 • Sun. 9:00-3:00**

Good 8/9 thru 8/15/03

### LANCASTER

LBR. (717) 397-4829 / FAX (717) 397-4865  
(Closed Sunday)

### ELIZABETHTOWN

LBR. (717) 367-1886 / FAX (717) 367-3858  
PEH. (717) 367-7707  
(Closed Sunday)

### CARLISLE

LBR. (717) 245-0404 / FAX (717) 245-9361  
PEH. (717) 245-2486 / FAX (717) 245-0295

### CHAMBERSBURG

LBR. (717) 263-0822 / FAX (717) 263-7077

### NORTHUMBERLAND

LBR. (570) 473-8311 / FAX (570) 473-7149



Visit us online at [carterlumber.com](http://carterlumber.com)