

ABSOLUTE AUCTION USED COMMERCIAL RESTAURANT EQUIPMENT MONDAY, AUGUST 18, 2003 - 1:00 P.M.

Auction located in the parking lot of Benner's Restaurant along old Route 22, just off the Pfoutz Valley Exit of Route 322, midway between Millerstown and Thompsontown, PA.

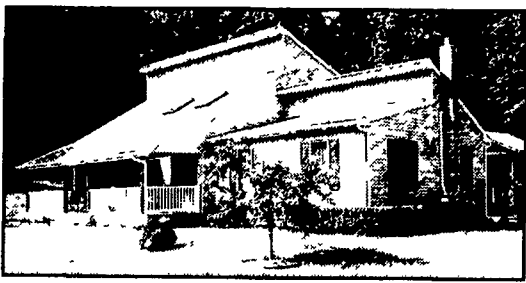
Burn Zall waste oil heater; Train 7.5T air conditioning unit; Beverage Air 5' self-contained bottle cooler; Victory ss single-door refrigerator; Hobart ss refrigerator; Friedrich climate Master cooling system; 2- undercounter refrigerators; 2- ss refrigerated sandwich units; Jackson Faspray automatic dishwasher; South Bend Magic Ray infra-red broiler; Speedster electric deep fryer; Keating gas deep fryers; digital commercial rotisserie oven; Toastmaster bun warmer; Wisco pizza oven; commercial hi-output table-top 2-burner gas stove; 20"X40" grill; ss exhaust fans; 28"X28" ss sink; ss 2-section sinks; 5-head & 4-head ss fountain machines w/ice bin; ss water fountain w/shelving; ice crusher; steamer; Hollymatic GMC 180A commercial meat grinder-mixer; Hobart 20 qt mixer; Globe porcelain & ss meat slicer; 28"X48" ss back bar; 60" ss wall unit; 48" ss restaurant rack; heavy duty restaurant rack; 2- dish lower-ators; ss bread racks; 16" ss shelf unit; lots of ss shelving & tables; ss 3-tier serving cart; ss wall-mounted shelving; ss racks w/wheels; galvanized steel skids; 4- dock trolleys; 6- roll-away aluminum tray racks; dish carts; 60" round table; round oak extension table; 36" pedestal tables; 3- ChangeOMatic lockers; filing cabinet; upholstered, metal-frame & wooden side chairs; Wilbur Curtis Co ss coffee urn; BunnOMatic coffee maker; electronic time clock; French fry cutters; many large oval & round aluminum serving trays; pizza trays; mixing pans; large & small strainers; lots of frying pans & cookware; steak trays; chafing dishes; wine buckets w/stands; large muffin & baking pans; coffee servers; plastic serving trays; ironstone platters, dishes; lots of very nice Mayer china dishes; all kinds of restaurant glasses, stemware, salt & peppers, flatware, silverware, cooking utensils, stock pots & stewing pots; dozens of chafing pans; scoops; crocks; salad dressing servers; salad bar containers; 2- U.S. Shipping Board spittoons; wooden Coca-Cola boxes; wooden wagon wheels; and much, much more.

Bryan D. Imes & Sons, Auctioneers
R R 1 Box 902, Port Royal, PA 17082
717-527-2449 AU-001656-L

George Shoemaker, Owner
3912 Duraham Rd, Harrisburg
717-319-5681

Lunch by Benner's Restaurant
Lots of Parking
Owners & Auctioneers not responsible for accidents
Terms: Cash or good PA check

HOME AT PUBLIC AUCTION SUNDAY, AUG. 24TH, 2003 - 1:00 PM



91 Shady Oak Lane, McClure, PA
Mifflin County, Decatur Township
Home on 8.5 Acres

www.rgilliganauctions.com - photos inside & out
Ron J. & Ron S. Gilligan will offer at Public Auction a 1 1/2 story home built in 1995 w/approx. 1808 sq. ft. situated on 8.5 acres. Located at above address: approx. 12 miles North of Lewistown, Pa. just off Rt. 522 North.

Home is in excellent condition. It has 3 bedrooms, living room w/cathedral ceiling & 2 sky lights, dining r., & v. nice kitchen, a laundry room on the 1st floor, central air, & oil fired hot water baseboard heat. It has a well & on site septic, and there is a full size concrete basement. Exterior of home is vinyl siding. There is a detached 48'x40' garage. Home also includes a 2 yr. old above ground 24' round by 4' deep swimming pool. Very nice large back porch & a lovely front porch. To see or for more info call Ron 814-237-0189. Terms: 10% down day of auction, balance within 45 days.

Sale by: Jeffrey L. Vickers
Auctioneers: Ron J. & Ron S. Gilligan
#AU3430-L & #AU339-L
Owner or auctioneer not responsible in case of accidents
All oral info day of auction takes precedence over all written ads

Public Auction Register

Closing Date Monday 5:00 P.M.
of each week's publication

Internet Sale Register will be updated
by Friday at 12 Noon

SAT. AUG. 16 - 10AM Chapman public auction at Rte. 249, Middlebury Center, PA, farm equip, vehicles, tools, misc. by Randy Jelliff Auct. AU1548-L, 570-835-4214.

SAT. AUG. 16 - 10AM Tractors, trucks, farm equip, tools, misc. at 671 Bryant's Corner Rd., Hartly, DE by Sam Walters Auct 302-284-4619.

SAT. AUG. 16 - 9AM Real estate, antiques, collect., HH goods, fishing, tools, misc. at 537 Orchard Drive, Catawissa, Pa., by George J. Henry AU001528L, George R. Henry AU-003519L, 570-799-5351.

SAT. AUG. 16 - 10AM New & Used Feed Mill Processing & Office Equipment & Tools, 92 Industrial Park Road, Muncy, PA, Auct. Chuck Kindlmann, AU-003818-L, 570-546-5678.

SAT. AUG. 16 - 10:30 AM Farm equipment dispersal, Rapidan, VA. Ownby Auction & Realty Co., Inc., A.F. 86, 804-730-0500.

SAT. AUG. 16 - 11AM Menel Gowin Estate of Tools & Real Estate, Towanda, Bradford Co., PA, Auct. Jerry Burke & Assoc., AU-116, 570-833-5913

SAT., AUG 16 - 1PM Real Estate for John S. Leid, 596 Martindale Rd., Ephrata, PA, by Groff Auctioneering AU-1471-L 717-354-7826.

SAT. AUG 16 - 5PM Real Estate of Rudolph and Betty Bagley, Between Lawtona nd Camptown, PA, Auct. Jerry Burke & Assoc., AU-116, 570-833-5913.

SUN. AUG. 17 - 10AM Government Surplus Auction of Vehicles and Equipment, 12 Seeger Dr., Nanuet, NY, Scherrer Auctions, 800-536-1401.

MON. AUG. 18 - 9AM Business liquid. of former Shoney Restaurant at 259 Stenwehr Ave., Gettysburg, PA; SS rest. equip., misc. equip, business items, by Pa. On-Site Auction Co., Randy Dickensets Auct AU003539-L, 717-630-9349 or 717-630-9365.



WEHRLY'S AUCTION SERVICE
CHARLES SCOTT
227-0082 235-4146
YOUR HOUSE, OR OURS! WE DO IT ALL!
TUES, AUG. 12, 2003
AT 2:00 P.M.

Located along Snyder Rd. off of Rt. 616 between Glen Rock and Seven Valleys or off of Shaffer Church Rd.

Selling 4 large wagon wheels in good cond., 2 Wheel garden tractor w/dual steel wheels, Small barn type shed; along w/our regular Tue sale of antiques - household goods - tools
Not responsible for any accidents
TERMS: Cash or approved check - MC/Visa
Scott & Charles Wehrly Auct
Lic.: 1868-L - 985-L ~ Tel.: 717-235-4146

NAA Auction Every Tuesday
GLEN ROCK, PA
Lic. #1868L-985L

PUBLIC AUCTION Saturday, September 6, 2003 at 9:00 am

Located just off of Market Street across from Scott Towers in Sunbury. From Route 61 North to Sunbury take 2nd Left after red light at top of hill on Market & Eleventh Streets. Signs day of Auction.

Lenker Manufacturing Co.



Business Liquidation
Commercial Building - 721 Market Street, Sunbury - Two-story concrete block warehouse building with vinyl siding situate on 5,909.8 square foot lot in the City of Sunbury, containing approxi-

mately 8,348 square feet of warehouse space. 1st Floor - shop area, storage, truck bay, wash room - 2nd Floor - office/work shop, silkscreen shop, two bathrooms, storage. Public water/sewer. Gas Heat. Plan to inspect this well maintained property, arrange your financing and be prepared to bid. Terms 10% down, balance due within 45 days. Inspection phone (570) 648-4477 or (570) 286-2732. Real Estate to be offered at 12:00 Noon.

Following 3-Phase Equipment: Rousselle E 2F 15-Ton Punch Press; Rousselle E 2G 15-Ton Punch Press; Quincy 80 Gallon Air Compressor; (2) Part Tumblers. **Misc. Equipment and Tools:** Greenburg #3 Arbor Press; Bench Master Model 154 5-Ton Punch Press; Bench Master Model 164 5-Ton Punch Press; Bench Master Model 132 2-Ton Punch Press; Bench Master Model 1706 (Parts); (3) Berg 2-Ton Punch Presses; Edward Segal Eyelet Machine; Chain Driven 20' Brass Drawing Machine; Glider Plate Vacuum Silk Screen Table, 68" x 8'; Craftsman 10" Table Saw; (2) Craftsman 17" Drill Presses; Craftsman 15" Drill Press; Craftsman 10" Radial Arm Saw; Craftsman Shaper Router Bench Top; Craftsman 15 1/2" Drill Press Bench Top; Craftsman Commercial Metal Lathe; Craftsman 32 Gallon Shop Vac; Rung Fu Milling Machine; Hitachi 15" Chop Saw, Like New; Delta Bench Top Drill Press; 1-Ton Electric Chain Hoist; Pullman Shop Vac; Dewalt Cordless Screw Gun; Milwaukee Cordless Screw Gun; Craftsman Cordless Screw Gun; Torch Set & Cart; Metal Bander & Banding Tools; (3) 30" Industrial Pedestal Fans; Gilson Cement Mixer; 55 Gallon Shop Vac Model 984; Handicleen Parts Washer; (4) Sections Industrial Metal Racks; (2) Transit Legs, new; Werner Fiberglass 32' Extension Ladder; 12-Ton Hydraulic Press (homemade); (5) 10' Metal Rollers w/Legs; J.W.I. Model JL25 Mixer, Agitator; NAPA Floor Jack; 6 Sections Scaffolding; (2) Metal Paint Storage Cabinets; Approx. 100 Gallon Kerosene Tank w/Hand Pump; Tobacco Pallets w/Metal Legs; Craftsman Stack Tool Chest; Misc. Hand Tools; Numerous Wooden Work Benches; Saw Horses; Metal Shelving; 4-Drawer Metal File Cabinets; Desks; Computer Table; Kenmore Air Conditioner; Copper Fire Extinguishers; Block Planes; Adze; Hand Printing Press; Misc. License Plates 1916 - 1940; Slaters Tool; Metal Tubs; Etc.

Nice 1996 Ford Econoline E350 Utility Van,
18,000 miles, Toreador Red

Nice John Deere TRS Snow Blower, Like New

Inventory: Approx. 100 Boxes Maple & Laminate Pieces, Milled & Finished (64" x 1 29/32" x 15/16" & 64" x 1 11/16" x 15/16"); 18 Cases New Cardboard Boxes, 7 1/2" x 5 3/4" x 1 1/2"; Other Numerous New Cardboard Boxes; Misc. Hardware, Bolts; Etc. All Inventory Items will be subject to 6% PA Sales Tax.

WILLIAM LENKER, et. al. Owners
JEFFREY S. DUNKELBERGER, AUCTIONEER
Phone (570) 648-4477 • Lic. #AU3043-L
Mark J. Jones - Lic. #AU1595-L

TUSCARORA MOUNTAIN PROPERTY PERRY COUNTY PUBLIC AUCTION Friday, August 15, 2003 5:30 p.m.

Ickesburg, PA
Auction located 1 mile north of Ickesburg just off Route 74 on the Ickesburg Mountain.

**Saville Township Residence or
Weekend Retreat - 7:00 p.m.**

11.2 acres of very gently sloped mountain wood land erected thereon a 34'X48' 1-story 3-bedroom frame dwelling with a 24'X24' renovated addition. This home has a modern kitchen, large living room/dining area, 1 full bath, good drilled well, on-site sewage, central air with oil-fired heat exchange, a small concrete basement area, and a detached 2-car garage. The property has a private right-of-way off Route 74 and also offers a good stand of young and mature hardwood timber. This Tuscarora Mountain and offers privacy, excellent hunting with Pennsylvania Game Lands nearby and would make an excellent year-round home or a wonderful vacation or hunting lodge. A must-see property selling with a recent survey and located in the West Perry School District.

Showing Dates: Sat & Sun, Aug 2 & 3, 2:00 p.m. - 5:00 p.m.

Real Estate Terms: 10% down day of sale, balance due in 30 days, cash or good PA check.

Pick-Up Trucks
1973 Chevrolet 4WD, 4-speed, V-8, 3/4T pick-up truck w/Myers snow plow; 1973 Chevrolet 2WD straight 6, 3-speed, 1/2 T pick-up truck.

Furniture & Household
GE no-frost side-by-side almond refrigerator w/door dispenser; modern pine triple dresser & mirror; Sportscraft pool table, side chairs, 2- rattan mommazzons; rattan swivel rocker, rattan magazine rack, rattan foot stool; Waterfall china, cookware; dishes, kitchen utensils, Kerosun room heater, misc building materials, 275 gal fuel tank; 12' overhead garage door, pick-up truck tool box, many more items not mentioned
Sale Order: Starting with small household items at 5:30, furniture at 6:00, pick-up trucks at 6:30 and real estate at 7:00 p.m.

Jason & Beth Logan, Owners
RR1, Box 39, Ickesburg, PA
717-438-3830 (leave message)

Bryan D. Imes & Sons, Auctioneers
RR1, Box 902, Port Royal, PA 17082
717-527-2449 AU-001656-L
Terms: Cash or good PA check
Owners & Auctioneer not responsible for accidents

PUBLIC AUCTION TRACTOR FARM EQUIPMENT - MISC. WED., AUGUST 13, 2003 4:00 PM

HELLAM, PA

1/2 Mile east on Rt. 462, turn south at Red Rose Rest. & Lounge onto Hillview Drive, go 1.5 mile to gravel lane on left. Follow auction arrows!

Ford 5610 diesel, tractor w/hydraulic loader 18.4x34 rubber like new & rear weights, J.D. 4X 3 pt. plow, J.D. 3X 3 pt. plow, J.D. KBA 28 blade drag disc, Brillion seeder, J.D. Killifer disc, J.D. 1240 minimum till 4 row planter w/liquid & dry fertilizer, J.D. FBB drill, 3 pt. scraper blade, Vicon seeder, 3 pt spring harrow, BMB 6' rotary mower, J.D. 3 pt. 6' rotary mower, 3 pt. sprayer, Ford 515 Dyna Balance sickle bar mower, flat wagon, Int. 428 baler w/thrower, J.D. 14T baler for parts, 18.4x34 tire chains - ring type, farm gates, wagon running gear, single chain hay elevator, 2 - 2 wheel trailers, cast iron trough, feeder trough, 6" PTO irrigation pump, 4"-5"-6" irrigation pipe, 4 Rain Bird guns, 165 gal. milk tank, portable water pump, bag truck, air greaser, heavy duty grinder, 1/2 industrial drill, milk cans, wheelbarrow, chestnut, cherry, black walnut lumber, oak rafters, steel panels, pick-up tool box, fanning mill, barn door hinges, steel fence post & farm wire, aluminum & wooden ladders, plastic pipe, wooden cabinets, 2 sleds, 5 gal jugs, animal pens, buck saw, wooden pulleys, clover seeder, plant flats, steel pipe & iron, tire rack, G1 gas cans, large bin of 1" to 3" pipe fittings

Tokem Gas Pump - Atlantic Red Ball
Guaranteed Service
Plus other Items of Interest

Terms: Cash or Good Check
Seller: **Harry R. Arnold**

All Announcements Day of Auction Take
Precedence Over Printed Material

Auction Conducted by:
Rentzel's Auction Service
Blaine N. Rentzel AU 761-L
Dave Conley AU 3269-L
Emigsville, Pa 717-764-6412
www.rentzelauctionservice.com