

Washington County Antique Tractor Club Show Is Aug. 22-24

HAGERSTOWN, Md. — The Washington County Antique Tractor Club plans its 11th annual Antique Tractor and Craft Show for Aug. 22-24 at The Washington County Agriculture Education Center.

Showcased this year are Allis-Chalmers tractors and equipment.

The Rural Heritage Museum

will be open Saturday and Sunday during the show. The 7,200 square-foot museum contains more than 2,000 items displayed in 26 exhibit areas depicting early rural life in Washington County.

Daily events include saw mill, stone crushing, threshing, and gas engine exhibits.

Friday features a garden tractor pull at 6 p.m. Stock, altered

stock, and pro stock classes.

Saturday events include kids games (corn shelling, corn cob throw, egg toss) starting at 1 p.m. Kids' pedal tractor race is 2 p.m. Parade of antique tractors is 3 p.m. Antique tractor pull is 4 p.m. for tractor models 1965 and older, including stock and open classes.

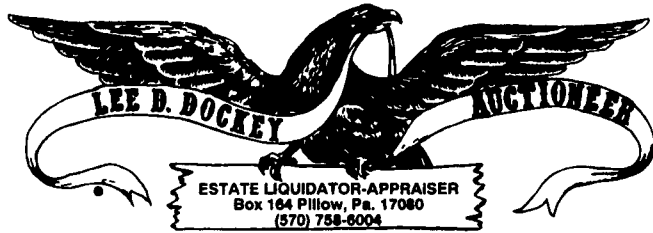
Sunday events feature a kids'

pedal pull at 1 p.m., parade of antique tractors at 2 p.m. Bake auction at 3 p.m. with raffle drawing for an Allis-Chalmers pedal tractor and other cash giveaways.

Admission is free. The show-

ground is located at 7313 Sharpsburg Pike (Rt. 65) near Hagerstown, Md., 7 miles south of intersection I-70 and Md. Rt. 65.

For more information, call David Lowry (301) 739-7604. For tractor pull information, call Doug Diehl (301) 491-5054.



2 DAY PUBLIC AUCTION OUTSTANDING ANTIQUES & COLLECTIBLES SATURDAY AUGUST 16, 2003 8:00 A.M.

LOCATION: Village of Red Cross, PA along Rt. 225, approx. 10 Miles South of Trevorton.
Watch for Auction Signs Day of Auction.

REAL ESTATE

2-1/2 Story Frame Home w/Garage, Situate on lot, 46 perches (+/-), in the Village of Red Cross, Jackson Township, Northumberland County, First Floor Having Kitchen, Dining Room, (2) Living Rooms, Closed-In Back Porch w/Laundry & 1/2 Bath; Second Floor Having (3) Bedrooms And Bath; Full Cemented Basement, New Yorker Oil Hot Water Furnace. For additional information or inspection, phone 570-758-6004. TERMS: 10% Down. Further terms & conditions to be given when real estate is offered at 12:00 noon.

ANTIQUES & COLLECTIBLES

2-Pc. Cherry Corner Cupboard-Top has 12-Pane Arched Door, Base has 3-Drawers & 2-Doors, Bracket Feet w/original stain; Set of 6 Half-Spindle Plank Bottom Chairs w/ Original Decoration & Apple Green Paint; Early Blind Door Corner Cupboard, 4' High, w/Cut-Out Bracket Feet; 2-Pc. Country Store Cupboard w/Old Green & Yellow Paint, 8' Long, Top Has (3) 4-Pane Glass Doors, Bottom Has (6) Drawers (1 missing); Plank End Jelly Cupboard 2-Drawers & 2-Doors w/Old Green & Yellow Paint; 3-Pc. Oak Butterprint Bedroom Suite; 3-Pc. Light Oak Bedroom Suite (high single bed); 3-Pc. Oak Bedroom Suite (high single bed); Additional Oak Furniture (Oak High Back Bed, China Cabinet, Square Pedestal Table, Side Board w/Mirror Top, Pressed Back Rockers & Chairs, Drop Head Sewing Machine, Child's Pressed Back Rocker, Etc.); 2-Pc. Kitchen Cupboard-Top Has 2-Glass Doors, Blind Door & 3-Drawers, Bottom Has 5-Drawers, Door & Flour Bin; Decorated Plank Bottom Arrowback Nursing Rocker; Plank Bottom Rocker w/Original Decoration; Wooden Footstool Decorated w/Tulips & Apple Green Paint, Dated 1872; 5-Spindle Kitchen Windsor Step Down Plank Bottom Chair; Decorated Cottage Dresser w/ Mirror; Cottage Stands; Wash Stands; Carpet Rockers; Mahogany Library Table & Record Cabinet, Upright Player Piano w/Mahogany Case; Piano Stools w/Ball & Claw Feet; 1930's Grandfather's Clock in Mahogany Case; Dep. Era Vanity, Chest of Drawers & Chiffonobe; 4-Leg Drop Leaf Table; Round Extension Table; Round Top Trunks; Edison Floor Model Victrola; Estate Room Heatrola; Fainting Couches 5-Pc. 1930's Style Living Room Suite; Gaudy Dutch War Bonnet Pattern Toddy Plate; Redware Slipware Plates; 12" Redware Basin, Early Glazed Cream Pitcher, Cake Mold, Crocks & Early Glazed Sugar Bowl w/Incised Bands; Bennington-Type Pie Plates & Pitcher w/Man on the Mt. Spout & Dog Handle; Early Adams Bowl; Late Adams Meat Platter; Andalusia Adams Plate; Flow Blue Plate, Waldorf Pattern; Pink Copper Lustre Handless Cups & Saucers; Copper Lustre Pitchers; Handless Cups & Saucers; (2) Early Child's Mugs, "Mary" & "Hoops"; Child's China ABC Plate; Majolica Pitcher; Carmel Slag Glass; Ironstone Teapots, Cups & Saucers, Wheat Pattern; Electric Reversed Painted Shade Table Lamp; Gone With the Wind Lamps; Rayo Lamp, Complete; Kerosene Lamps; Blue Stoneware Pitcher & Bowl; Pottery Mixing Bowls; Roseville Vase 162-8"; Cowden Jug w/Blue Stencil Decoration; Crocks & Jugs; Cowden Brown Batter Jug; Figure 8 Clock; Floral China Pitcher & Bowl; Milk Glass Dresser Bottles; Castor Set; Frosted Lion & Frosted Dove Covered Compotes (small chips); Dark & Marigold Carnival Glass;

Lg. Asst. Pressed & Pattern Glass (Water Sets, Cake Plates, Compotes, Punch Bowl, Goblets, Cruets, Etc.); Jenny Lind/Fislerville Glassworks Blown Flask; Amber Wild Cherry Tonic Bottle; Pink, Green & Amber Depression Glass; Peanut Butter Glasses; Salt & Pepper Shakers; Fanny & Rye Baskets; Wooden Butter Mold; Wooden Country Store Hat Holder; Farrier's Box; Temple Table-Top Radio; Betty Lamp; Victorian Match Holders; Crimping Iron; Iron Building Bank; Sm. Wagner Cast Iron Fry Pan; Tin Candlestick Mold; Early Cookie Cutters; Luden's "Satin Finish" Store Tin; Quilts; Linens & Doilies; Dress Forms; Glass Candy Containers; Schoenhut Child's Piano; Doll Carriage; Child's Wooden Riding Toy Horse, marked "Choo-Choo-Car"; Battery-Op. Space Patrol Satellite by Amico, IOB; Sheet Music; Sadirons; Iron Butcher Kettle w/3-Foot; Butcher Ladles & Forks; Graniteware; Barn Lanterns; Milk Bottles (Billow's, Engle, Minnier, Kimmel, etc.); Wooden Tubs; Square Tub Maytag Washer; Numerous Small Collectibles!

HOUSEHOLD ITEMS

Frigidaire Electric Stove, Double-Door Refrigerator, Heavy Duty Washer & Dryer; 5-Pc. Breakfast Set; Metal Kitchen Cabinets; Zenith Floor Model Color TV; Singer Electric Sewing Machine; Misc. Hand & Garden Tools; Etc. 1968 Ford Fairland, 2-Door Sedan, As-Is.

WEDNESDAY, AUGUST 20, 2003
10:00 A.M.

Auction Will Begin With Items Not Able To Be Sold From Saturday.
POSTCARDS, CALENDARS, ADVERTISE-
MENT, PAPER ITEMS

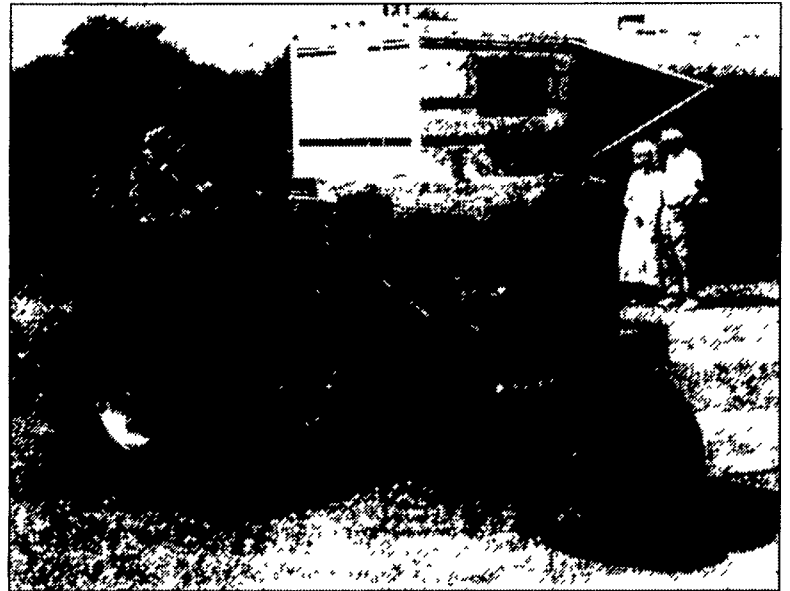
Local Area Postcards (Red Cross, Rebeck, Urban, Herndon, Dalmatia, Pillow, Sunbury, Shamokin, etc.); Lg. Postcard Asst. (Holiday, Novelty, Souvenir Scenes, Cartoon, etc.); Advertisement Calendars (Thomas & Son Fertilizers, Royster Fertilizers & Local Area Businesses 1919-1940's, etc.); Valentines; Herndon National Bank Items, Herndon News Papers; Adv. Blotters; Invoices; Sm Fertilizer Ad Booklets; Kitchen Premium Booklets; 1930 Dalmatia HS Graduation Announcement; Fettererolf's (County Line) & Union School (Washington Twp) Booklets; Early Thrashing Photo; Union School 1915 Photo; McCormick Deering 15-30 Gear Drive Tractor Booklet; Various Car Booklets (Dodge Bros. Type B Sedan, Durant Series '55, Oldsmobile, Buick, etc.); Pa Game News w/Ned Smith Covers, 1950-1982; 1950's Lg. Pa Game News; Tom Mix Comics, Books 1, 2, & 3; "Bringing Up Father" Comics, Series 2 & 3; German Books; Peter Montelius Indentures & Papers; Carpet Rocker; Spinning Wheel; Yarn Winder; Oak Case Drop Head Sewing Machine; Floor Mod. Radio; Crocks; Jugs; Buggy Wheels; Numerous Small Collectibles!

NOTE: This is a generation auction, similar to those found 40 years ago. Such a large volume of merchandise was found on the premises, it is impossible to list everything!

TERMS: Cash. Personal checks accepted w/established account or prior approval. No phone or absentee bids accepted.

Roger V. Wiest, Attorney
Sara E. Latsha, Owner
Leonard A. Fellon, P.O.A.

Lee D. Dockey Auction Service #AU229L (570-758-6004)
Yvonne Dockey-Romberger #AU1683L R.R. Romberger #AU4051L
E-mail: dockey@tds.net



The 11th annual Washington County Antique Tractor Club will feature Allis-Chalmers tractors and equipment.

Antique Detective

(Continued from Page B22)

tern number and letter in black were placed over it.

Both English and American firms copied his mottled glaze but not the thumbprint.

A must for serious collectors is the book "Majolica" by Marilyn G.

Karmason" 1990 and still in print. It shows a complete listing of marks, identification, and many examples.



PUBLIC AUCTION

Thursday, August 14, 2003 2:30 P.M.

LOCATION: RD2, Port Trevorton, PA, on Silver Creek Rd.

DIRECTIONS: From Selinsgrove S. on Rt. 11-15 approx. 7 miles, bear right onto old highway south end of Port Trevorton, turn right onto Silver Creek Rd. Coming N. on Rt. 11-15, after Snyder County Produce at Hilsher's Store/Citgo Gas turn left then right on old highway, go 1/4 mile left on Silver Creek Road, 1 mile to sale. Approx. 40 miles N. of Harrisburg, PA. Arrows along Rt. 11-15 auction day.

COLLECTIBLES - HOUSEHOLD

Violin w/Wooden Case; Kent Guitar, Corner Shelf, Doilies/Dresser Scarves; Oak Rocker & Porch Swing, Wooden Barrel; Jugs - Crocks, Metal Hunting Lic. 1926 & 1928 Co. 55, Lanterns, Wooden Half Bu. Measure, Huckster Scales, C.I. Tea Kettle & Pots, German Helmet, Esso Tiger In Your Tank Fire King Cups - Tray - Pillow, Qt. Milk Bottles Wallas Dairy, New Castle, 5 Gal. Glass Water Jugs; Ice Tongs & Saw, Wooden Wheelbarrow, Draw Knife; Egg Baskets; 2 Arrow-Back Chairs, Wash Board; Slaw Cutter; Frigidaire Portable Dishwasher, Emperor Tall Case Clock, 6' H, Handmade Masonic Clock, Rockwell Collector Bells, 9 Pc. Dmette Set, Maytag Wringer Washer, Prizer Gas Stove; Wagon Wheel Table, Golden Piano Accordion, Jaymar Piano, Wooden Adv Boxes, Books On Flying From 1950's & '60's; Pheasant Glasses, Hamilton Beach Roaster, Small Elec Appliances; Vitamaster Treadmill; Exercise Bike; Kerosene Heater, White Mountain 6 Qt. Ice Cream Freezer, Homemade Ice Cream Jack, Office Chair; Picnic Table; I.H. Chest Freezer, Fans, Bedding; Afghans, Misc Glassware; Flower Vases; Freeburg Academy Plate, Port Trevorton Fire Co. Plate; Grubb's Church 200th Anniv. Plate; S.S. Cook Pot, Veg Dryer, Canning Jars, Etc.

BUTCHER TOOLS: Sausage Stuffer; Butcher Kettle; #12 Meat Grinder, Meat Hooks - Fork - Sturter; Hand Meat Saw; **Hand Carpenter Tools;** Elec Hand Tools - Drills - Circular Saw, Etc., Small Anvil; Lincoln 225 Amp Arc Welder; Wayne Oil Tank w/Hand Pumps, Organizers; Welder Clamps, Vise Grips; Wall Drill Press; 1/2 Ton Chain Hoist; Small Gas Engines; Elec. Water Pumps; Garden Sprayers; Bu. Boxes; Clamp On Corn Sheller, Pipe Clamps; Pipe Wrenches; Wedges; Hand Masonry Tools; Tree Trimmers; **Lawn/Garden Hand Tools;** Homemade Trace Vac Vacuum On #80 J.D. Trailer; Hahn Eclipse Rototiller; Jacobsen Edger; Garden Mark Drop Spreader; Roof Vacuums & Chipper Push Or Pull; **Craftsman Pressure Washer, 2400 P.S.I. 6 Hp. Gas Engine, Like New;** Echo Gas Weed Eater; Stihl 015L Chain Saw; Homelite Chain Saw; Clover Seeder; Alum. Ext. Ladder; Century Space Heater; Plus Other Items Of Interest

John Deere H Tractor w/Elec. Start, Ser. #H53352, Good Tin; J.D. 2-Way Plow; J.D. Cultivator; Hillside Hitch; Horse-Drawn Wooden Beam Plows; Potato Plow; Walk Behind Cultivator, (2) 2-Wheel Trailers, 1w/Title; McCormick 5' Sickle Bar Mower On Rubber; Scrap Pile; Plus Other Items.

1972 Oldsmobile Delta 88, 4 Dr., 350 Auto.,

PS, PB, AC, 69,000Mi., 1 Owner, Color - Saddle Tan, Super Nice Car.

SALE ORDER: Auction Will Start w/Collectibles - Household.

NOTE: Tractor & Car Sell At 6:30 P.M.

TERMS: Cash or PA check. www.markjonesauct.com LUNCH

OWNER: Orpha R. Scholl Wife Of The Late John (Tolle) School



MARK J. JONES, AUCTIONEER
Phone (570) 286-0052 • Lic. #AU 1595-L
Jeff Dunkelberger • Lic. #AU 3043-L