

**CENTRAL PENNSYLVANIA FARMS, FARMETTES, LAND AND CABINS**

Our Farm and Land Division currently has many farms, farmettes, land parcels, and cabins available in central Pennsylvania. We would be happy to send you a free farm and farmette list and/or rural land and cabin list.

**Call for a complete farm and farmette inventory.**

Farm and Land Division

Fred Strouse (814) 364-1705  
Mel Rockey (814) 466-6688  
George Demchak (814) 625-9151  
Tim Lake (814) 364-1327



2300 South Atherton  
State College, PA 16801  
(814) 234-4000  
1-800-876-339E

**CENTRAL VIRGINIA**

Farms and land available from 5 to 500 acres, reasonable prices, very low taxes, farmer friendly communities, agricultural economy.

**State Wide Realty Co.**  
Farmville, Virginia  
**434/392-6163**

[www.vastatewiderealty.com](http://www.vastatewiderealty.com)

**FOR SALE LARGE MARYLAND HUNTING FARM**

On Delaware-Maryland State Line. 412.92+/- Acres, 115+/- Acres Cropland 296+/- Acres Wooded, Excellent Deer Hunting No Structural Improvements, well drained, fertile, pond, extra location for additional ponds.

**Chabbott Petrosky Commercial Realtors.**  
1-800-678-7105

**THE REAL ESTATERS OF MANSFIELD**

1671 S. Main St., Mansfield, PA 16933  
(570)662-2138 • Evening (570)662-2363  
[realmans@epix.net](mailto:realmans@epix.net)

**HOME ON 14.85 ACRES!**

Nice wooded location on paved road east of Mansfield, PA 2 Bedroom ranch over full basement ready to finish for 3rd bedroom and rec room. Living room with fireplace and skylights Attached 2-car garage, cedar siding and deck Secluded setting Just \$145,000 M-1611

**COVINGTON TOWNSHIP LAND**

40 95 deeded acres South of Mansfield, PA Mix of fields, grown over pasture & woods Part of FSA "Debt for Nature" Program for 50 yrs Long views, Great building site Approved sewage site \$61,425 M-1738

**ELKHORN ROAD LOCATION**

3024 sq ft, 2 story home on 2 62 acres in Farmington Twp. 3 bdrms & 2 baths Spacious room layout Large covered deck 3 outbldgs Huge family room features woodstove Minutes to Tioga, PA, & Corning, NY Just \$129,999. M-1721

**CANYON COUNTRY CAMPSITE!**

1 acre with 2 story home that probably should be demolished Existing septic of unknown components, 6 yr old drilled well Shippen Twp location close to Wellsboro, Ansonia, Pine Creek, & State Forest Asking \$24,900. M-1726

**UNIQUE COUNTRY HOME**

On 3.3 acres, all wooded homesite just south of Wellsboro 3-bedroom, 2-bath ranch home with 2 fireplaces Over 2,000 square feet Detached storage barn/garage Close to State Game Lands! \$119,900 M-1570

**WHAT A RETREAT**

2 story remodeled farm house Approx 2614 sq ft w/5 bdrms, 2 baths, A/C, 2-car garage, 3 outbldgs including 24x59 garage/shop w/2 horse stalls on 6 23 acres 1 mile to State Game Lands #12 Close to Canton, Wheelerville, & Eaglesmere Just \$150,000 M-1715

**CANTON TOWNSHIP LAND**

10+ surveyed acres w/tremendous view Utilities close by Approved sewage site Mostly open w/some woods. Deed restrictions on file State Game Lands approximately 6 miles Just \$29,900 M-1669

**HOME PRICE REDUCTION**

39 43 outstanding acres included with this 2-story partially remodeled home 3-bedrooms and 1-3/4 baths Still needs work and new kitchen, but great dead-end road location Was \$124,900 Reduced to \$119,900 M-1718

**HFA HORNING FARM AGENCY, INC.**

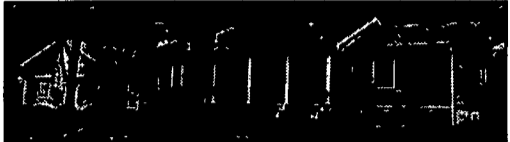
Morgantown, PA (610) 286-5183

>> Courteous Real Estate Services  
>> Professional Auctioneers  
>> State Certified Appraisers  
>> Specializing in Farms and Land

**Your Key to Sullivan County**



ROBIN FIESTER  
BROKER/OWNER



Rock Run Creek runs through 31 wooded acres! This immaculate house offers 3 bedrooms, 2 baths, a great room with a stone hearth, dining room, living room, attached 2 car garage and a workshop to die for! Don't miss the bear snout imprint on the back door! Seller is motivated \$219,000

(570) 525-3929

[www.robinrealty.com](http://www.robinrealty.com)

**MISSOURI**

FREE Brochure of dairy farms and ranches.



417-469-2316  
Baker Realty  
Box 36

Willow Springs, MO 65793  
<http://www.bakerrealty.com>

**94 Ac Woodland** with reservoir, bordering Rt 333, near Lewistown, PA, Passed for Septic, ready to build camp or home,  
717/994-6100 days  
717/436-5500 after 6 p.m.

**We Buy Land -**

Call Greg @

717-464-9060  
ext 120

**CALL COLDWELL BANKER**

**FARM & RURAL PROPERTY DIVISION**  
NEW! FREE VIDEO TOURS AVAILABLE ON CD  
CENTRE COUNTY



Bald Eagle Valley 26 1 acre farmette 19 acres pasture or hay land, 3 5 acres woodland & 2 5 acres site 1890's remodeled home, 1 1/2 bath, 3 bedrooms, bank barn, smoke house, machine shed & crib, 4 bay garage Nice small stream, close to state forest & park Potential for horse farm or small beef operation \$246,900 View complete brochure and slide show at [www.cbur.com](http://www.cbur.com)

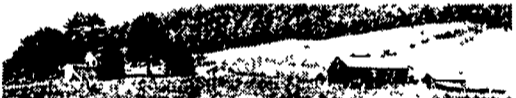
**CENTRE COUNTY**



New Listing Bald Eagle Valley Auto body shop well equipped and profitable 40' x 60' frame building meeting fire codes, two air compressors & dryer, paint mix room, paint booth, office All you need to start Also you can walk to work or rent a three bedroom, 1 3/4 bath brick home with two car attached garage View our complete brochure and slide show at [www.cbur.com](http://www.cbur.com) on either the residential or commercial property lists

If You Want the Most Complete Farm and Rural Property Marketing Plan Available Visit the Farm and Rural Property Division at [www.cbur.com](http://www.cbur.com) View farm, farmette, rural acreage, woodland and cabin brochures and slide shows. If you don't have Internet access call toll free for detailed brochures and list.

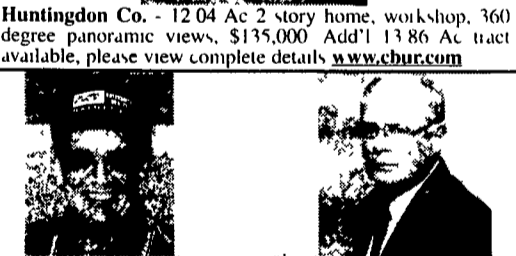
**BLAIR COUNTY**



New Listing! Tyrone area, 115 acre general farm, excellent home, licensed butcher shop, sound 2-story bank barn, out-buildings \$449,500 Please view the complete details on [www.cbur.com](http://www.cbur.com).  
our free video CD is now available.

**HUNTINGDON COUNTY**

Huntingdon Co. - 12 04 Ac 2 story home, workshop, 360 degree panoramic views, \$135,000 Add'l 13 86 Ac tract available, please view complete details [www.cbur.com](http://www.cbur.com)



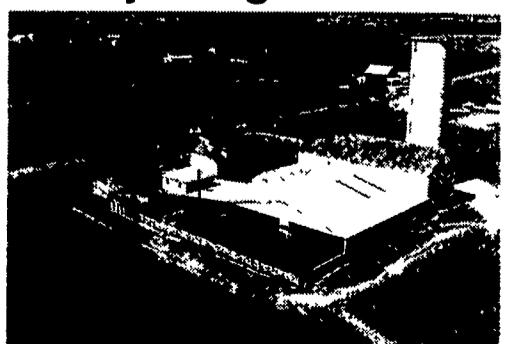
Don Myers (814) 422-8111 e-Pre Certified  
Dale Sherman (814) 692-8149  
(Residence Numbers)

**COLDWELL BANKER UNIVERSITY REALTY**  
126 E. Foster Ave., State College, PA 16801  
800/669-4925 Toll Free

**Lancaster Co., PA . . . . . Adjoining Farms**



#1. 113 Acre, approx. 95 tillable, 40x500 broiler house, double 2 story house, pond, capacity for 500 steers feed lot, 45x100 barn, concrete silos plus out-buildings.



#2. 60 Acres, approx 50 tillable, silo, barn, 250 steer capacity feed lot, 2 story farmhouse, 2 car garage.

**For Sale by Owner . . . . . 717-665-3865**

**ENDLESS MOUNTAIN REAL ESTATE COMPANY**  
(570) 659-5684 Covington, PA  
**BRADFORD & TIOGA COUNTY**

*Beautiful Building Lot* w/full rights to 16 ac private stocked lake, 4.16+/-, mostly open, perk/survey complete, elec available, short commute to Elmira, N Y \$15,000 (#1072)

*Good Location* for new home or retreat, 2+/- ac, mixture of open & wooded, perk/survey complete, elec. available, enjoy rights to 16 ac stocked lake. \$12,000 (#1073)

*Spacious Victorian Home*, 4022 sq ft, 6BR, 1-1/2 baths, NG/HW heat, original inlaid/parquet hwd flrs & wdwk, grand 3 sty staircase, wraparound front porch, back leads to nice level 0.44+/- ac yard w/water garden, many new improvements include updated wiring/plumbing, new TP wndws, roof, & vinyl siding, storage shed, check it out! \$125,00 (#1074)

*Cozy Modular Ranch Home*, offering 2BR, 1-1/2 baths, full bsmt, large garage w/wkshop, 7+/-, dead-end twp road \$75,000 (#1075)

[www.endlesmtrealestate.com](http://www.endlesmtrealestate.com)  
Email: [end@epix.net](mailto:end@epix.net)



**BEDFORD COUNTY, PA - Dairy Farm** with 500+/- acres, two houses, bank barn, free stall barn and silos. Also crop land, pasture and woodland and spring fed pond. Call for information, shown by appointment. File #1406.

**COLDWELL BANKER SKS REALTY**  
3518 Business 220  
Bedford, PA 15522  
800/266-9665 • 814/623-7009

**POSSON REALTY & Auction Service**

787 Bates Wilson Road (607) 334-9727  
Norwich, NY 13815 [www.possonrealty.com](http://www.possonrealty.com)

**NEW YORK REAL ESTATE**

#1814 - Secluded, end of road 200 acres Prime hunting and recreational land, electric and water Old farm house. \$170,000

#1753 - Owner retiring! Dairy farm with good buildings and land Large two family house Two story dairy barn for 90 head Machinery and shop building Two silos All barn equipment 224 acres, mostly flat land Price is firm \$275,000

#1757 - Owner retiring! 190 acre dairy farm Good two family home Very good two story 80 cow dairy barn, all barn equipment Two silos Located on quiet road The land is good Large beaver pond for the kids. Priced reasonable \$215,000

#1776L - West of Binghamton NY 200 acres, prime hunting ground Deer and turkey Stocked trout stream. \$160,000

**Please call for appointment!**