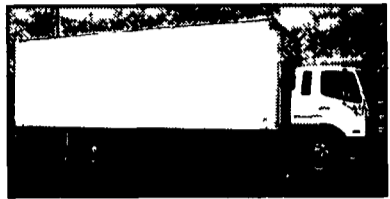




**99 UD 1800 HD w/16Ft. Reefer Body,**  
6.9 Litre Turbo Diesel (225 HP), 6 Sp., 18,000 GVWR, Carrier Tempro 4405 Reefer Unit, Rollup Rear Door, 51,000 Mi. #4614



**2001 Mitsubishi FM-SP**  
w/26' Grumman Reefer Body & Thermo King KD II SR, Elec. Stand-by, Stainless Rear Frame, Roll Up Door and Curbside Door, 7.5 Turbo Dsl (230 HP), 6 Spd., 32,900 GVWR, Air Brakes, 45,000 Miles.



**01 Mitsubishi Fuso FM617**  
w/26 Ft. Dry Van,  
7.5 turbo Diesel (200 HP), 6 Sp., 26,000 GVWR Tuckaway Lift Gate, E-Track, Translucent Ceiling, 70,000 Miles #4597



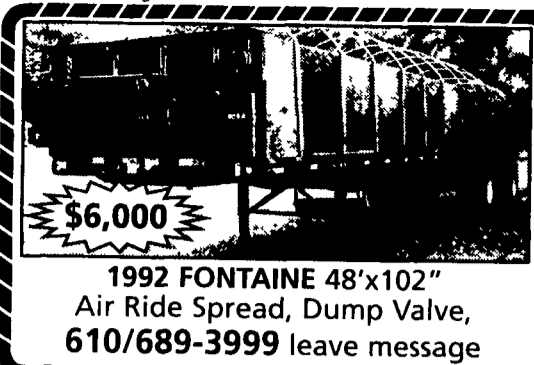
**1997 Ford E450 Superduty Turtle Top,**  
21-Passenger w/Wheelchair Lift, 7.3L Powerstroke Dsl., Rear Air Conditioning, 14050 GVW, 66,800 Miles, White. #4380



**94 WhiteGMC WIA64TES,** 111 Detroit, 350 Horse, w/Jake, 10 Spd., 3.90 Ratio, Air Ride, A/C, 522,000 mi., Virgin tires, Good Condition Out of Our Fleet! \$8,900

## 3/4 Four Way Auto Sales

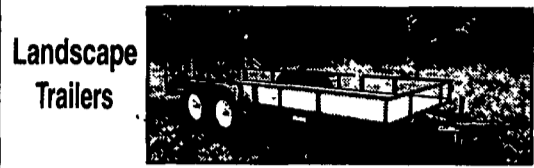
Rt. 23  
New Holland, PA  
**717-354-3199**  
Toll Free  
**1-877-999-8267**



**\$6,000**  
**1992 FONTAINE 48'x102"**  
Air Ride Spread, Dump Valve,  
**610/689-3999** leave message



**Gooseneck Trailers**



**Landscape Trailers**



**Skid Steer Trailers**



**Deckover Trailers**

For information and the name of your nearest dealer, call



Manufacturer of Trailers & Farm Machinery  
**800-380-2404**

Dealerships available in select areas.



**70 INT. 2010A**  
549 Cu. In. - Will Take 18'-20' Bed.  
**717/548-2760 - No Sunday Calls**

## Meadowbrook Auto Sales

875 Abbottstown Pike, Hanover, PA  
**717-632-9600 717-633-5789**



**1999 Dodge Ram 2500**  
Laramie SLT 4x4,  
6 Cummins Diesel A T, PS, PB  
Air Cond, Tilt Wheel, PW, PDL,  
114,000 Miles, Super  
Nice Condition  
**Only \$18,900**



**1997 Chevrolet K-2500**  
Ext Cab 4x4,  
350 V-8, A T, PS, PS, Air Cond,  
Tilt Wheel, Cruise Control, PW,  
PDL 126,000 Miles  
**Only \$10,900**



**1997 Ford E-350 Cargo Van,**  
5.4 V-8, Automatic, Air Cond,  
PS, PB, 94,000 Miles  
**Only \$8,900**



**1997 Ford F-250 Ext**  
Cab 4x4 XLT,  
7.3 Powerstroke, A T, PS, PB,  
Air Cond, PW, PDL Tilt Wheel,  
Cruise Control, 99,000 Miles  
**Only \$16,900**



**1988 Ford F-350 Crew Cab,**  
V-8 460, A T, PS, PB, Air Cond,  
PW, PDL, 156K Local Trade,  
**Only \$4,900**



**1999 Dodge Ram 3500**  
Ext Cab 4x4 Dually,  
Cummins Diesel, A T, PS, PB,  
Air Cond, Cruise Control, Tilt Wheel, PW,  
PDL, 82,000 Miles,  
Super Nice Condition  
**Only \$22,900**



**1998 Chevrolet**  
12 Ft. Dump Stakebody,  
350 V-8, Automatic, PS, PB,  
Air Cond, Tilt Wheel, Cruise  
Control, Dual Rear Wheels  
25,000 Miles  
**Only \$19,900**



**1999 Dodge Ram 2500**  
Laramie SLT 4x4  
V-8, A T, PS, PB, Air Cond, PW  
PDL, Tilt Wheel, Cruise Control  
47,000 Miles  
**Only \$15,900**



**1997 Ford F-250**  
351 V-8, Automatic, PS, PB,  
Air Cond, E-Z Dump Bed,  
106,000 Miles  
**Only \$9,500**



**1995 Dodge Ram 2500 4x4**  
Cummins Diesel, A T, PS, PB,  
Air Cond, Cruise Control, 160K  
**Only \$10,900**



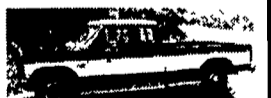
**1994 Dodge Ram 3500**  
Dually  
Cummins Diesel, A T, PS,  
PB, Air, PW, PDL, Tilt,  
Cruise, Real Nice Cond,  
241K,  
**Only \$7,900**



**1995 Dodge Ram 2500**  
Laramie SLT 4x4  
Cummins Diesel, A T, PS, PB,  
Air Cond, PW, PDL, Tilt  
Wheel, Cruise Control, Super  
Nice, 114,000 Miles  
**Only \$12,900**



**1997 Ford F-350 Utility**  
Truck Ext. Cab  
7.3 Powerstroke Diesel, A T,  
PS, PB, Air Cond, Dual  
Rear Wheels, 116,000 Miles  
**Only \$14,900**



**1986 Ford F-250**  
Ext Cab,  
6.9 Diesel, A T, PS, PB,  
Air Cond, Tilt Wheel, Cruise  
Control, PW, PDL, 179K,  
**Only \$5,900**



**1994 Ford F-250**  
Ext. Cab  
7.3 Turbo Diesel, Automatic,  
PS, PB, Air Cond, Cruise  
Control, Tilt Wheel, PW,  
PDL, 126,000 Miles  
**Only \$9,900**



**Stepvans - All**  
Aluminum,  
10 ft to 16 ft Single Rear and  
Dual Rear Wheels, Aluminum  
& Manual Transmissions 4  
Cyl & 8 Cylinder Diesels, 1  
350 Gas, Service Records for  
Most Many to Choose from  
**Starting at**  
**\$3,000.00**



**1998 Chev. 3500**  
Crew Cab  
Dually 4x4 454 V-8 A T  
PS PB Air Cond PW,  
PDL Tilt Wheel Cruise  
Control, Real Nice Condition  
**Only \$17,900**

**1998 Chev. 3500**  
Crew Cab  
Dually 4x4 454 V-8 A T  
PS PB Air Cond PW,  
PDL Tilt Wheel Cruise  
Control, Real Nice Condition  
**Only \$17,900**



# YARNALLS Equipment Co.

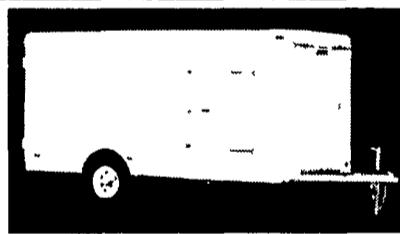
4171 Horseshoe Pike (Rt. 322), Honey Brook, PA 19344

Call Today Toll Free:  
**866-228-0408**

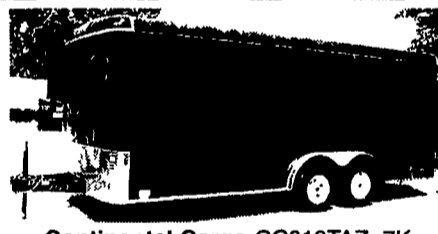
Over 100  
Trailers  
In Stock



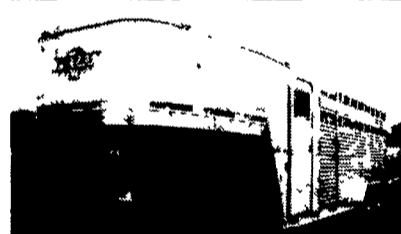
**EXISS In Stock • EXISS In Stock • EXISS In Stock • EXISS In Stock •**



**Pace Journey, 6' x 12',**  
Ramp Door **\$2,380**



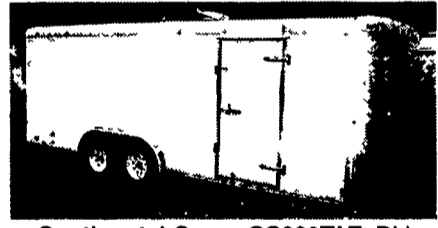
**Continental Cargo CC818TAZ, 7K**  
GVW, Black, Dbl. Rear & Side Doors,  
Vent and Lites, Stone Guard **\$4,575**



**Exiss Stock Combo**  
7' x 20' **\$11,100**



**Exiss CXT20, 2 Horse Slant**  
Load w/Dressing room. **\$9,775**



**Continental Cargo CC820TAZ, Dbl.**  
Rear Doors, Side Door, Stone Guard,  
Vent & Lites **\$4,900**



**Exiss Sport**  
3-Horse Slant Load w/Dress.  
No down payment **\$12,499**



**Pace America 6x10 Dump Trailer,**  
Black, Great Price **\$4,078**



**Continental Cargo CCT16TAZ, Ramp,**  
Rear & Side Door, White **\$4,320**



**Bison Stock 7x16 7 high, red**  
w/spare **\$5,275**

### USED TRAILERS



**18 Ft. Deckover, 10K**



**1994 Pacer 16 Ft.**



**1996 Big Valley 3 Horse**  
Gooseneck



**REESE**



**Financing - Trade Ins - Repairs**

Hours: Mon, Tues., Wed., Fri. 8:30-5:00;  
Thurs. 8:30-7:00; Sat. 9:00-1:00 P.M.  
8 Miles Off Exit 22 PA Turnpike



**WESTERN SNOWPLOWS**