

# www.kbford.com

Your Internet Connection

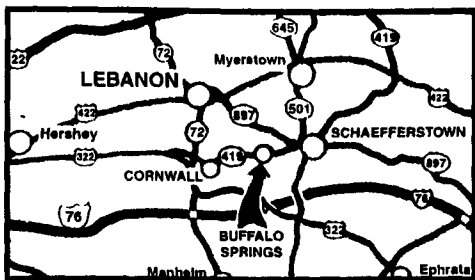
SPECIALIZING IN NEW & USED SUPER DUTY PICKUPS

## KELLER BROS.

(Buffalo Springs) Lebanon, PA

717-949-2000 or 1-800-363-2767

LEBANON COUNTY'S HEAVY DUTY TRUCK HQTRS.



FAMILY OWNED AND OPERATED FOR OVER 80 YEARS

Over 100 Clean Pre-Owned Vehicles In Stock At All Times!!

**2002 CHEV S-10 CREW CAB**  
4.3L V6, AT, A/C, PW, PL, 4x4, Local 1-Owner Trade  
**\$18,995**



**1997 FORD F150 SUPER CAB**  
4x2, XLT, 5-Spd., A/C, PW, PL, T.C.  
Only **\$9,345**



**2000 FORD F650 BOX TRUCK**  
Cat Diesel, AT, 24 Ft. Box, Hyd. Lift, 26,000 GVW, Air Brakes, Only 9,000 Miles  
**REDUCED \$31,921**



**1995 Ford F350 S/C D.R.W.**  
XLT, 460 V8, PW, PDL, Tilt, Cruise, Very Clean, Ready to Pull.  
**\$11,995**



**NEW 2003 FORD F350 CREW CAB**  
V10, AT, Full Power, 4x4 Cab & Chassis Only.  
**\$28,400**



**2001 FORD F150 SUPER CAB LARIAT**  
4x4, 5.4 V8, AT, A/C, PW, PL, Leather, 21,000 Miles, Fiberglass Cap  
Only **\$25,773**



**2001 FORD SPORT TRAC 4x4**  
4.0L AT, A/C, PW, PL, Alloy Wheels, Sharp  
Only **\$20,773**



**2000 MITSUBISHI MONTERO SPORT**  
V6, AT, A/C, PW, PL, Leather, CD, 1-Owner, Like New  
**\$16,975**



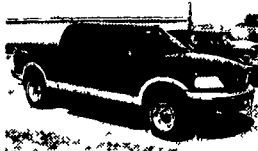
**2000 FORD F250 SUPERCAB, 4x4, XLT**  
7.3 Diesel, 6-Spd., A/C  
**\$20,550**



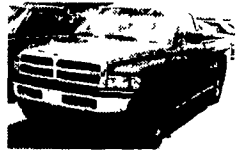
**2001 FORD F250 CREW CAB 4x4**  
7.3 Diesel, XLT, AT, A/C, PW, PL  
**\$31,995**



**2001 FORD F150 SUPER CREW**  
XLT, 4x4, V8, AT, A/C, PW, PL, 37,000 miles  
**\$23,995**



**1995 DODGE RAM 1500**  
Reg. Cab. 4x4, SLT, V8, AT, PW, PL  
**\$8,808**



**2001 FORD F350 XL Dump Truck**  
5.4 V8, 5-Spd., AM/FM/Stereo Only 7,000 Miles. Ready to Work  
**\$25,900**



**1998 FORD EXPEDITION 4x4 EDDIE BAUER**  
V8, A/C, Full Power  
**\$12,795**



**2001 FORD RANGER SUPER CAB EDGE**  
V6, AT, A/C, 4x4, CD Player, 33,000 Miles, Very Clean  
**\$14,929**



**2001 FORD F150 SUPER CAB XLT**  
4x4, Off Road Pkg., 5.4 V8, AT, A/C, PW, PL  
**\$23,335**



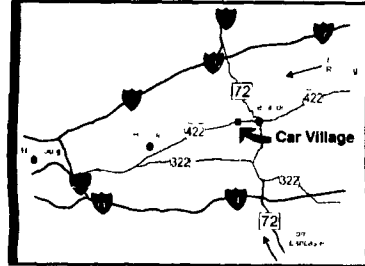
Nicest Trucks in the East • Nicest Trucks In the East • Nicest Trucks In the East • Nicest Trucks In the East • Nicest Trucks In the East • Nicest Trucks In the East

www.useddieseltruck.com

2300 W. CUMBERLAND ST. (Rt. 422)  
LEBANON, PA 17042  
(Across From Lebanon Valley Mall)

# CAR VILLAGE

1-800-650-1420  
717-274-2000



**4x4 SUPER CAB SHORTBED**  
99 FORD F250  
Powerstroke Turbo Diesel, 6 Sp., A/C, Vinyl Seat & Floor \$22,900



**DON'T BUY NEW LOOK AT THIS**  
2003 DODGE 2500 HEAVY DUTY CREW CAB  
Only 1,000 Miles, 24 Valve Cummins Turbo Diesel, Auto, Loaded Laramie SLT. A Beauty and Only \$34,900



**\$12,900**  
99 CHEVY 2500 SUPER CAB 4x4  
6.0 Litre V8, Auto, A/C, All Power Equip., 8 Foot Bed, Alloy Wheels



**ONLY 18,000 MILES**  
2001 FORD F250 SUPERCAB 4x4  
Almost New, Loaded XLT, 5.4 Triton V8, Auto, A/C, Loaded XLT, Comfortable 40/20/40 Seat, Limited Slip Axle. Remainder New Warranty



**\$10,900**  
97 DODGE 2500 4x4  
Lots of Truck for a Little Money, Heavy Duty 3/4 Ton, 360 V8, Auto, A/C, Tow Pkg, Alloy Wheels



**6 SP POWERSTROKE**  
2000 FORD F350 CREW CAB DUALLY  
4X4 Gorgeous XLT LARIAT Powerstroke diesel, Trailer Tow Pkg Alloy Wheels, & Plenty More, Only 38,000 Miles



**CUMMINS DIESEL**  
98 DODGE 2500 QUAD CAB 4x4  
24 Valve Cummins Turbo Diesel, Auto, A/C, Laramie SLT Pkg., 48,000 Miles, Very Nice \$23,900



**HEAVY DUTY CHEVY**  
2001 CHEVY 2500 HD PICKUP 4x4  
The Impressive Duramax Diesel, Allison Trans, A/C, Tow Pkg., Only 47,000 Miles



**2000 FORD 350 SUPER CAB 4X4**  
Power Stroke Turbo Diesel, Auto, A/C, Tow Pkg, Very Clean Sharp  
**\$27,900**



**SHORTBED SUPER CAB**  
2001 CHEVY 2500 4x4  
Nice Driver, Very Clean Duramax Diesel, Allison Auto, Loaded, All Options, Alloy Wheel, Tow Pkg., Limited Slip Axle



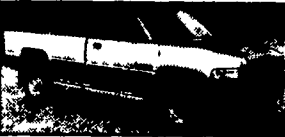
**\$12,900**  
**WILL GET YOU THE NICEST**  
93 FORD F250 SUPER CAB 4x4  
7.3 Diesel, Auto, A/C, Loaded XLT, Capt. Chairs, Console, Tow Pkg., Aluminum Wheels



**6 SP CUMMINS**  
2002 DODGE 2500 QUAD CAB 4x4  
Very Strong Truck, Loaded, Laramie SLT, A/C, Overhead compass Remaining Fact Warranty



**Farm Special**  
88 FORD F250 4x4 PICKUP  
Heavy 3/4 Ton Diesel Power, Auto \$4,500



**5SP CUMMINS**  
98 DODGE 2500 4x4 PICKUP  
Heavy Duty 3/4 Ton Impressive Cummins Turbo Diesel, A/C, Tow Pkg



**4x4 CREW CAB DUALLY**  
2002 FORD F350  
Loaded XLT, PowerStroke Turbo Diesel, Auto, A/C, Comfortable 40/20/40 Seat, Alloy Wheels, Fact Tow Pkg Only 7,700 Miles



**DIESEL 1 TON**  
2000 FORD F350 4x4 PICKUP  
Super Nice, 37,000 Miles, Powerstroke Turbo Diesel, Auto, A/C, Alloy Wheels, Loaded XLT



**4 DOOR SHORTBED**  
2000 FORD F350 XLT 4x4  
Nice To Look At & Very Nice To Drive Powerstroke Turbo, Diesel, Auto A/C Loaded XLT, Alloy Wheels, Tow Pkg



**HEAVY CHEVY**  
2001 CHEVY SILVERADO 3500 4 Wheel Drive  
Gorgeous - Like New Only 12,000 Miles Remain New Tk Warranty, 8100 Vortec V8 Auto, A/C, Limited Slip Axle, Very Strong Great Tow Machine

## FLATBEDS, WORK & DUMP TRUCKS



**STAKE BODY**  
99 FORD F350  
Very Clean, Only 48,000 Miles, 5.4 Triton V8, 5 Spd., A/C, New Service 7 Insp. Ready to Work. \$18,900



**2003 GMC 4500**  
16 Foot Steel Flatbed  
Only 1,700 Miles, Like New with GMC Warranty, Duramax Diesel Allison Auto, AC, Priced Real Right, \$29,900



**17 FOOT CUBE VAN**  
97 FORD E-450 SUPER DUTY  
Heavy 14,000 GVW, Rear Lift Gate, Powerstroke Turbo Diesel, Auto, AC, Local Trade, Only 68,000 Actual Miles



**ALUMINUM ROLLBACK**  
2000 FORD F550 SUPER DUTY  
18 Foot Body, Powerstroke Turbo Diesel GSP, Loaded XLT, Heavy 19,000 GVW, Keyless Entry, Tool Boxes, Wheel Lift, Remaining New Tk Warranty



**4x4 Dump Truck**  
2000 DODGE 3500  
Cummins Turbo Diesel Auto, AC, Only 43,000 Miles, Very Clean Runs Strong



**650 FLATBED 2000 FORD SUPER DUTY**  
Only 2,000 Miles, 26,000 GVW, Under CDL License, 3126 Cat., 6 Sp., 14 Ft. Stahl Body, Priced Right \$31,900



**REAR LIFT GATE**  
97 FORD E-450 SUPER DUTY  
1 Owner Trade, Powerstroke Diesel, Auto, A/C, 17 Foot Aluminum Body



**DIESEL CARGO VAN**  
2001 FORD E350 SUPER CARGO VAN  
Very Clean Inside & Out, Powerstroke, Auto, A/C, Heavy 9,400 GVW, Only 40,000 Miles, Remaining New Tk Warranty



**550 CREW CAB**  
4 Wheel Drive, Rare Find. Made For The Big Loads, Powerstroke Turbo Diesel, Auto, A/C, Eby Aluminum Bed, Gooseneck hitch



**Equipment Hauler**  
93 FORD F-450 SUPER DUTY ROLLECK  
Just what you need, 18 Foot Jer-Dan Bed, Brand new wood floor, Diesel Power, AC, Loaded XLT



**SUPER CAB DUMP**  
2000 FORD F350  
A Very Desirable Truck, Clean, Only 55,000 Miles, V10, Auto, A/C, 9 Ft Body Insp & Services \$21,900



**550 SUPER CAB 4x4**  
2002 FORD SUPER DUTY  
Rare Find, Only 22,000 Miles, Powerstroke Turbo Diesel, 6 Sp., Loaded XLT, Steel Flatbed, Gooseneck & Class 3 Hitch



**350 4 DOOR CHASSIS, 4 WHEEL DRIVE,**  
2001 FORD XLT.  
Waiting for your Body, Only 19,000 Miles Powerstroke Auto, A/C, Heavy, 11,500 GVW, Dual Rear Wheels



**4x4 CHASSIS**  
2001 DODGE 3500  
Short Wheel Base 80" C/A, 24 Valve Cummins Turbo Diesel, Auto, A/C, Limited Slip 4 10 Axle



**2003 FORD 750 CHASSIS**  
Only 11,000 Miles, 33,000 GVW, Diesel Power, 7 Sp Trans, A/C, 2 Fuel Tanks, Brand New, Dealer Cost \$38,800 Our Price \$35,900

Nicest Trucks in the East • Nicest Trucks In the East • Nicest Trucks In the East • Nicest Trucks In the East • Nicest Trucks In the East • Nicest Trucks In the East